



## ERHARDT GST ALL-GLASS SLIDING DOOR

VERSATILE, INDIVIDUAL AND ELEGANT

 **ERHARDT  
MARKISEN**

Mehr. Freude. Leben. Zuhause.



## ERHARDT ALL-GLASS SLIDING DOOR

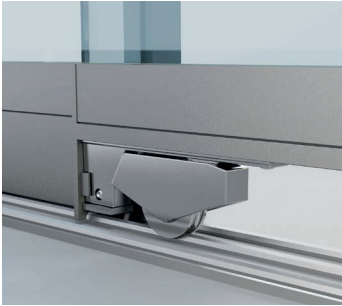
### TRANSPARENCY, EASY RUNNING AND FUNCTIONALITY

The ERHARDT all-glass sliding door (GST) is a transparent wind and weather protector which has been designed for use in a terrace roof or as a room divider. In this case, individual sliding leaves are pushed horizontally in parallel to one or both sides. Carriers, which are hidden and integrated in the system, automatically support the process of opening and closing each leaf.

You can select between several floor rails, from 2 up to 5 rails which can be laid below floor level to enable barrier-free transitions to the outside. Several handle and closing variations are available to provide the largest-possible operating comfort and safety levels. The system, which is supported from below, guarantees low maintenance and continuous easy movement with its stainless steel running technology and ballbearing-mounted stainless steel rollers. Thanks to intelligent profile design and adjustable trolleys, the system provides compensation for structural tolerances and enables rapid, simple installation.

## ERHARDT ALL-GLASS SLIDING DOOR

### A PRODUCT WITH MANY POSSIBILITIES

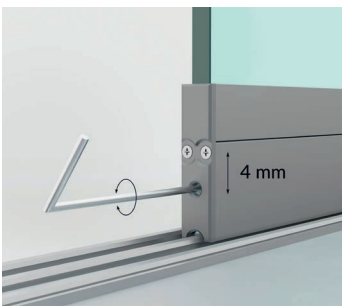


#### Easy, quiet running thanks to stainless steel running technology

Easy movement of the sliding leaves is guaranteed thanks to hidden, ballbearing-mounted stainless steel rollers in combination with stainless steel running surfaces. The sliding leaves slide quietly over the running services and ensure long service life.

#### Convenient locking in side structural junction profile

A vertical frame as a side wall junction profile enables safe locking and clean structural element connection. Locking of the lock system takes place using a closing lever, and the locking condition is optically displayed. Furthermore, the vertical wall junction profile increases the driving rain and wind sealtightness.



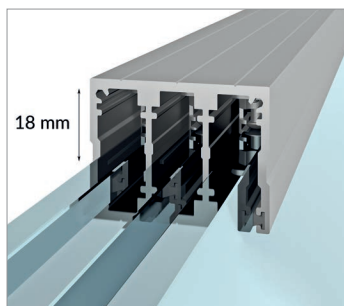
#### Height adjustment in fitted condition

All sliding leaves can be adjusted in height by up to 4 mm when fitted. This means that fine adjustment of the leaves is retrospectively possible at any time and therefore extremely installation and maintenance-friendly.

#### Many running rail variations

The flat, drained running rail is available with up to 5 rails and can either be recessed or surface-mounted. This means that the transition to the outside can be implemented almost flat if required.



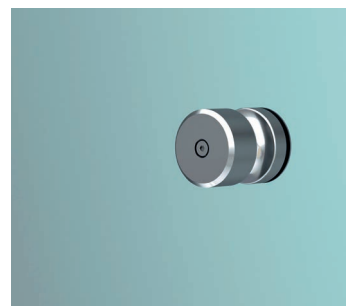


### Structural tolerances and height compensation

By sinking the upper structure, the top guide rail can accept a height tolerance of up to 18 mm. Furthermore, the carriages are adjustable for height. Even if the purlin in a terrace roof deflects, functionality of the sliding system is guaranteed.

### Range of handles

You can select from an extensive range when deciding on your handle, and therefore individually designed the operability.



### Sealing and ventilation

Since the leaves overlap by 36 mm, the system is driven rain-repellent, and also ensures permanent ventilation at the highest-possible transparency.

### Convenience during opening and closing

When the all-glass sliding door is opened or closed, the next leaf is automatically carried along by integrated, hidden carriers.





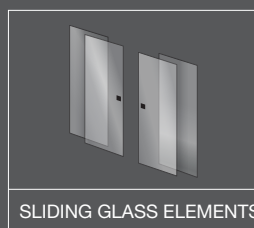
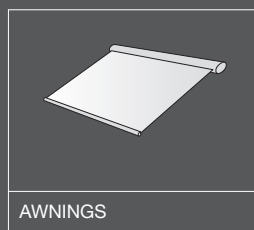
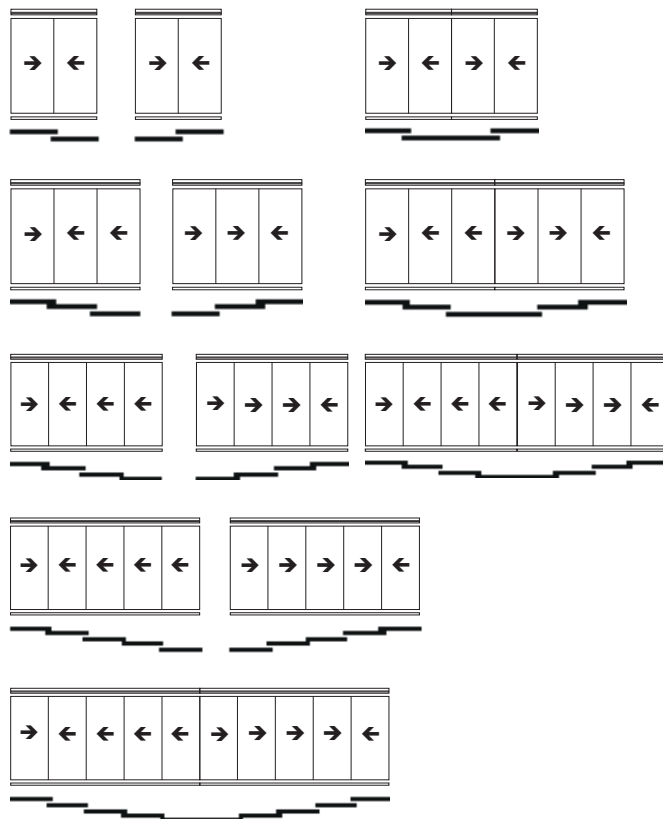
# ERHARDT ALL-GLASS SLIDING DOOR

## AT A GLANCE

### All glass element properties

Maximum door leaf sizes	<ul style="list-style-type: none"> <li>• up to 260 cm height</li> <li>• up to 150 cm width</li> <li>• leaf weight up to 75 kg</li> <li>• special sizes on request</li> </ul>
Application areas	<ul style="list-style-type: none"> <li>• wind and weather protection in the terrace roof sector</li> <li>• room dividers</li> <li>• balcony glazing (note fitting situation)</li> </ul>
Implementation variations	<ul style="list-style-type: none"> <li>• 2, 3, 4 and 5-rail version</li> <li>• slidable to left and/or right</li> </ul>
Profile technology	<ul style="list-style-type: none"> <li>• non-insulated all-glass sliding system</li> <li>• floor-mounted leaves</li> <li>• transparent corners</li> </ul>
Fittings technology	<ul style="list-style-type: none"> <li>• ball bearing-mounted stainless steel rollers</li> <li>• stainless steel running rails</li> <li>• covered carrier function</li> <li>• locking from inside/outside</li> <li>• drained floor rails</li> </ul>
Glazing	<ul style="list-style-type: none"> <li>• with TSG (toughened safety glass)</li> <li>• glazing thickness 8 mm or 10 mm</li> </ul>
Frame colours (standard)	<ul style="list-style-type: none"> <li>• white (RAL 9016)</li> <li>• grey aluminium texture (RAL 9007 fine texture)</li> <li>• anthracite (DB 703)</li> </ul>
Requested colours	any RAL colour possible

### Sketches / opening variations



Your ERHARDT specialist contact

Further information at  
[www.erhardt-markisen.de](http://www.erhardt-markisen.de)

**ERHARDT  
MARKISEN**

Mehr. Freude. Leben. Zuhause.