



Sustainable production for trend-setting construction



STS / STU Steel and Stainless Steel Doors

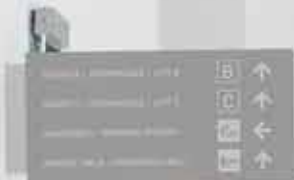
Flush doors and thick rebate doors for demanding architecture

Fire-rated and smoke-tight doors

Security doors

Multi-purpose doors







Brand quality from Hörmann	4
Sustainable production	6
Hörmann construction project door programme	7
Overview of door functions	8
Good reasons to try Hörmann	10
High-quality equipment	12
Steel and stainless steel frame types	14
Frame system	16
T30 / EI ₂ 30 fire-rated door STS 30 / STU 30	19
T30 / EI ₂ 30 stainless steel fire-rated door STS 30 / STU 30	21
T90 / EI ₂ 90 fire-rated door STS 90 / STU 90	23
T90 / EI ₂ 90 stainless steel fire-rated door STS 90 / STU 90	25
Steel multi-purpose door STS / STU	26
Stainless steel multi-purpose door STS / STU	27
Glazing variants	28
Fixed top panels and ventilation grilles	30
Optional equipment	31
Clear passage widths for STS doors	32
Clear passage widths for STU doors	33
Hörmann product range	34

The colours and surface finishes shown are subject to the limitations of the printing process and cannot be regarded as binding.

All rights reserved. No part may be reproduced without our prior permission. Subject to changes.

Image on left:
SLSP bank in Bratislava with T30 / EI₂30 stainless steel fire-rated door STS 30

Brand quality from Hörmann

Top safety and reliability



Crane buildings at Rheinauhafen in Cologne, Germany with Hörmann products



In-house product development

Growing and constantly changing functional and safety requirements necessitate continuous new construction / equipment developments and improvements, especially when it comes to moveable construction components such as doors. In this area, our qualified development teams prove their highly specialised expertise time and again.



Highly sophisticated production methods

We at Hörmann rely on the latest production technology at our specialised factories. Computer-controlled operations ensure dimensionally accurate elements with perfectly fitted fittings and functional parts.



Matching system appearance



Secure solutions with international approval

Hörmann provides you with all the doors you need from a single source. With a matching appearance and precisely the functions you require for your project – fire protection in the fire protection classes T30 / EI₂30 and T90 / EI₂90. Smoke protection, acoustic insulation and burglar proofing in the resistance classes WK 2 and 3. Hörmann's expertise in fire-protection is not just approved in Germany. Several designs correspond to the "British Standard" and are thus also approved for use in large parts of the Commonwealth. Hörmann also has obtained approvals for countries like France, Italy, Austria, Switzerland, Russia, Poland, Hungary and Slovenia. We also have approvals for China, where Hörmann manufactures fire-rated doors for the local market.

Established sales organisations are available within the corresponding countries for planning and implementation. Please contact us if you would like to find out more.



Fire testing at own fire test chamber

Our new and further developments are constantly tested for the required fire resistance and smoke-tightness through in-house fire tests at our fire testing centre. The knowledge gained from these tests ensures high fire protection for buildings. They also allow us to optimally prepare our innovations for the official inspections by the accredited testing centres for official approvals.



Expert building support

Experienced specialists within our customer-oriented sales organisation accompany you from the planning stage, through technical clarification up to the final building inspection.

Expert fitting is guaranteed by experienced Hörmann fitters and the specialised trained staff of Hörmann's partners.

Sustainable production

For trend-setting construction



Sustainability documented and approved by the ift in Rosenheim

Hörmann has already received confirmation of sustainability of all its multi-function doors through an environmental product declaration (EPD)* in accordance with ISO 140425 from the Institut für Fenstertechnik (ift – Institute of window technology) in Rosenheim.

The inspection was based on the Product Category Rules (PCR) Doors and Gates from ift Rosenheim GmbH, issue PCR-TT-0.1.

Environmentally-friendly production was confirmed by a life-cycle analysis in accordance with DIN ISO 14040/14044 for all doors.

Sustainably produced multi-function doors from Hörmann

- **Environmentally friendly production**
e.g. solvent-free powder coating at the factory, which can be fully finished on-site with a variety of limited-VOC paints or primers.
- **Regional raw materials**
The majority of applied raw materials is purchased from Germany and central Europe.
- **Durable, low maintenance products**
Approved in a functional test.

Sustainable construction with Hörmann's expertise

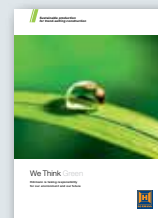
Hörmann has been able to gain great expertise in sustainable construction through various projects. We also apply this know-how to support your projects. Another advantage: For every project order, the required data for LEED certification are automatically generated.

breeam



DGNB®

Deutsche Gesellschaft für Nachhaltiges Bauen e.V.
German Sustainable Building Council



Find out more about Hörmann's environmental activities in the "We think green" brochure.

Hörmann construction project door programme

The right solution for any requirement



Function doors

From sturdy steel internal doors and secure apartment entrance doors to fully glazed office doors up to external doors with thermal break, Hörmann offers a large programme with diverse colour and equipment variants.



Multi-function doors

These are distinguished by a continuous identical appearance. The advantage for architects and building owners – doors with different functional requirements that are fitted at the same building level are perfectly matched.



Fully glazed fire and smoke protection elements

Hörmann's aluminium and steel fire-rated / smoke-tight doors and glazings in the T30, T60 and T90 models will convince you with certified safety, perfect function and a 100 % matching appearance. With Hörmann automatic sliding doors, you are combining the transparency of tubular frame parts with the requirements of fire protection or barrier-free construction. These products allow Hörmann to provide a uniform fire protection concept for use in architecturally demanding construction projects.



Visibility windows

Hörmann visibility glazings are used as windows or room-high elements to provide more light and better visibility. Visibility glazing is available for requirements like heat and acoustic insulation or radiation protection. All versions are offered in fire-retarding F30 and fire-resistant F90 variants. Individual solutions can be implemented using rail divisions, recesses and angles.

Overview of door functions

Steel and stainless steel doors for any requirement

Door description	Version	Page	Functions							
			Matching system appearance	T30 EI ₂ 30	T90 EI ₂ 90	RS Sm	dB	WK 2	WK 3	U _D
				T30 fire-retarding	T90 fire-proof	Smoke-tight	Acoustic-rated	Break-in-resistant, resistance class 2	Break-in-resistant, resistance class 3	Thermally insulated
STS, steel	Single-leaf	19	■	■	■	●	●			●
STS, steel	Double-leaf	19	■	■	■	●	●			●
STS, stainless steel	Single-leaf	21	■	■	■	●	●			●
STS, stainless steel	Double-leaf	21	■	■	■	●	●			●
STS, steel	Single-leaf	23	■	■	■	●	●	●	●	●
STS, steel	Double-leaf	23	■	■	■	●	●	●	●	●
STS, stainless steel	Single-leaf	25	■	■	■	●	●	●	●	●
STS, stainless steel	Double-leaf	25	■	■	■	●	●	●	●	●

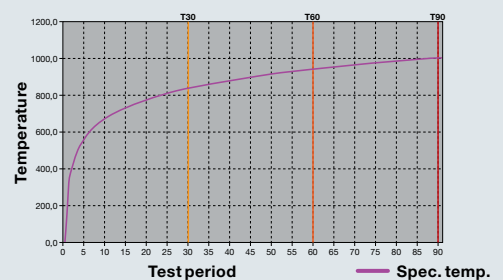
- Main function – as standard
- Additional function – with corresponding equipment (see page 9)

Door functions in detail

- T30** Fire-retarding
DIN 4102/
DIN EN 1634
- EI₂30**
- T90** Fire-proof
DIN 4102/
DIN EN 1634
- EI₂90**

Fire-retarding steel doors are tested according to DIN 4102-T5 or DIN EN 1634-1 and officially approved. In fire tests, these doors must resist temperatures according to the temperature / time curve for at least 30 minutes (T30 / EI₂30) or 90 minutes (T90 / EI₂90).

Temperature / time curve according to DIN 4102 / DIN EN 1634-1



RS**Smoke-tight**
DIN 18095**Sm****dB****Acoustic-rated**
DIN EN ISO 717-1**Acoustic rating category:**II up to 41 dB
III from 42 dB**Ordered in correlation with the resistance class**

DIN EN V 1627

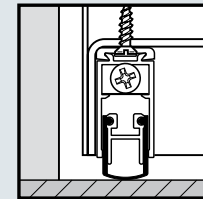
DIN EN 1627

WK 2**RC 2****WK 3****RC 3**

Smoke-tight doors are tested in accordance with DIN 18095 or DIN EN 1634-3 and must be equipped with the door seal shown on the right and a door closer. Another requirement is that smoke-tight doors have to be equipped with a profile cylinder (a blind cylinder can also be used). The surface edges of the frame must be permanently sealed to both sides of the building structure. Sealing may not be necessary for plastered frames.

Bottom seal

In addition to the use in smoke-tight and acoustic-rated doors, this doors bottom seal is also available as special equipment for other door types.

Bottom seal,
retractable

Acoustic-rated doors are tested to DIN EN ISO 717-1. They are delivered with the door seal shown. The stated acoustic values are laboratory values. The values do not apply to doors with glazing, fixed top panel and fitting in gas concrete. The calculated acoustic value that can be achieved for the object is the laboratory value -5 dB.

Break-in-resistant according to DIN EN 1627

The DIN EN 1627ff series of standards took effect in September 2011 for break-in-resistant doors. Hörmann break-in-resistant doors have been tested and classified in accordance with the European specifications of the prestandards DIN V ENV 1627 to 1630 since 1999. They are also voluntarily subjected to quality monitoring by an accredited test and certification authority and are recommended by the police.

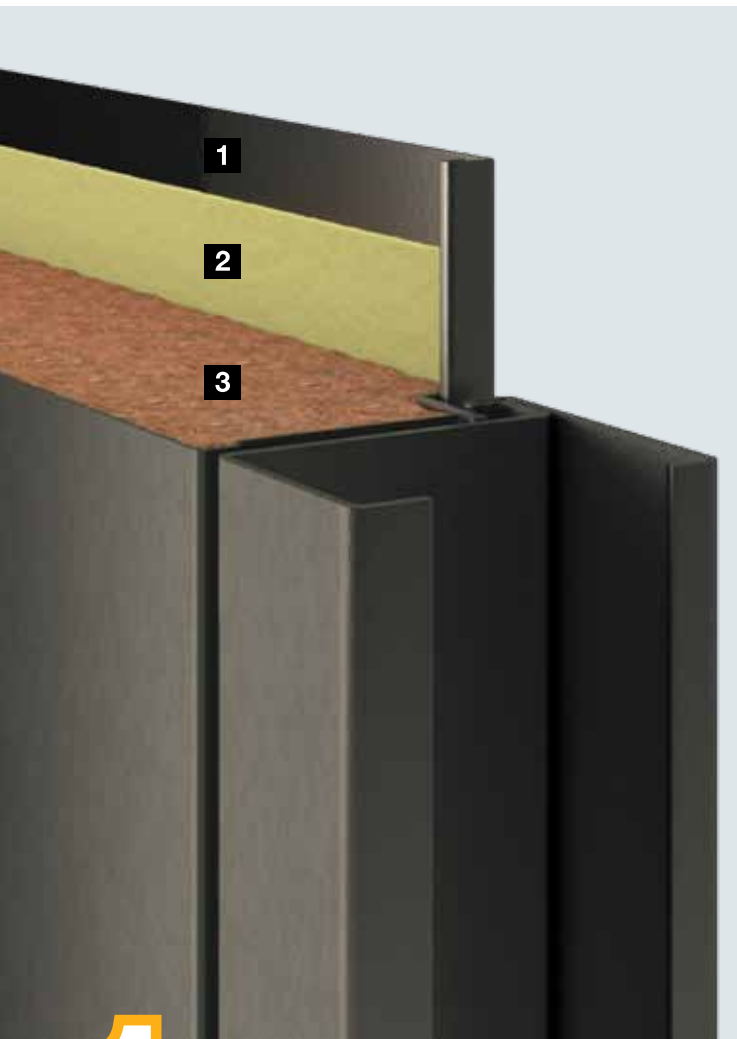
Equipment	WK 2	WK 3
Mortice lock, prepared for profile cylinder, lever / knob, DIN 18250	●	
5-point locking system as a bolt / swing bolt combination		●
With double-leaf doors, fixed leaf with secured rebate bolt lock, locking upwards and downwards	●	●
Alu-FS lever / knob handle set DIN 18257		
- Class ES 1 with short escutcheon and pull-off protection	●	
- Class ES 2 with long escutcheon and pull-off protection		●
Profile cylinder DIN 18252, drill-proof on both sides, 3 keys and security certificate (optional)	○	○
Number of security bolts per leaf for leverage protection	3 – 5	5 – 7

Size range	Single-leaf		Double-leaf	
	Width	Height	Width	Height
Overall frame dimension (ordering size) block frame	840 – 1220	1725 – 2370	1640 – 2320	1805 – 2480

All dimensions in mm

Good reasons to try Hörmann

High-quality door construction for demanding architecture



1

High-quality composite construction

2

Elegant flush-fitting version

Bonded door construction

The door leaf is a flush and fully bonded composite construction. This significantly increases the leaf rigidity and the door closes with a satisfying noise.

Door design

- 1** Steel or stainless sheet steel
- 2** Fully bonded
- 3** Fire protection insert

Flush STS version

The high-quality flush-closing STS version is especially suited to demanding architecture. For doors with break-in-resistant equipment (WK 2, WK 3), we recommend the thick rebate version STU (figure on page 12).



3

High-quality overall appearance

Flush-fitting transition of the door leaves

The flush-fitting door leaves on double-leaf doors provide a non-disturbing meeting style for a high-quality overall look.

Flush-fitting transition to the top panel

The fixed top panels also integrate themselves seamlessly into the door's look.

Integrated fittings

Optional concealed hinges and integrated overhead door closers are inconspicuously integrated into the door's appearance.



4

Surface finishes of your choice

Coating on request

You can optionally choose the STS / STU doors in RAL to choose or coated in special colours. A mortar-free assembly reduces the danger that the surface finish will be scratched when fitting.

100 % stainless steel version

STS / STU doors are also available in stainless steel designs, made of V2 A steel with 240 K grain size. Optionally available are also V2 A matt circular textured finish and V4 A stainless steel.

High-quality equipment

Detailed engineering



1 Version



STS: Flush

STU: thick rebate

2 Surface finish

Door leaves and frames are delivered galvanized and powder-coated in Grey white (similar to RAL 9002). Alternatively, the surface finishes are also available in RAL to choose or NCS colours.

3 Glazings

The Hörmann steel and stainless steel doors can be optionally equipped with different glazing variants. The surface-mounted standard glazing frame features invisible fittings on the hinge side. Optionally, you can also choose the flush-fitting glazing profiles for high-quality architectural demands.



4 Lock

Hörmann steel doors are equipped as standard with a lever / knob mortice lock and prepared for a profile cylinder in accordance with DIN 18250. Break-in-resistant WK 3 doors are available with a multiple-point locking system. With double-leaf doors the fixed leaf is secured with a latch in rebate or a rebate locking bolt at the top and bottom depending on the function.

5 Lever handle set

Hörmann steel and stainless steel doors are equipped with a black (polypropylene) FS round lever handle set, with round escutcheon and securely fitted lever handle as standard, in accordance with DIN 18273. Break-in resistant doors are supplied with an FS security lever / knob handle set according to DIN 18257, class ES 1 (with short escutcheon) or ES 2 / ES 3 (with long escutcheon). Optionally, you can also choose the lever handle set in stainless steel or request an object lever handle set.



The shown door contains special equipment.

Exclusive HDC 35 slide rail door closer

6 Closing devices

Fire-rated and smoke-tight doors close automatically as standard. Slide rail door closer HDC 35 comes as standard for single- and double-leaf doors. Depending on the size, features, use or fitting style, the factory can also supply you with doors with linkage door closers, slide rail door closers with door leaf selector or concealed integrated door closers for an attractive appearance. Please refer to page 31 for other locking systems.



Exclusive HDC 35 slide rail door closer for single- and double-leaf doors



Linkage door closer for single- and double-leaf doors



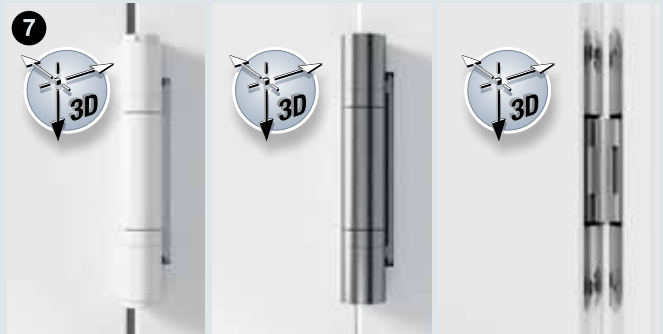
Integrated door closer for single- and double-leaf doors

7 3-way adjustable hinges

The STS / STU doors are provided as standard in RAL 9002 with coated 3-way adjustable hinges, also in RAL 9002. Doors in RAL to choose are provided as standard with 3-way stainless steel adjustable hinges. For an even more appealing appearance, STS doors offer concealed hinges.

Optimally adjustable

All hinge systems are three-way adjustable and are especially suited for fine-tuning and subsequent adjustment of the door. This means you can balance out minor fitting tolerances.



Standard hinge
in door colour

Stainless steel hinge

Concealed hinge

8 Security bolts

On fire-rated and smoke-tight doors, steel security bolts on the hinge side provide additional stability in the case of a fire. Break-in-resistant door models according to DIN EN 1627 are secured on the hinge side against being levered open by up to 7 solid steel security bolts per door leaf, depending on the resistance class.



Security bolts

Steel and stainless steel frame types

Flexible, versatile and quickly fitted with mortar-free assembly

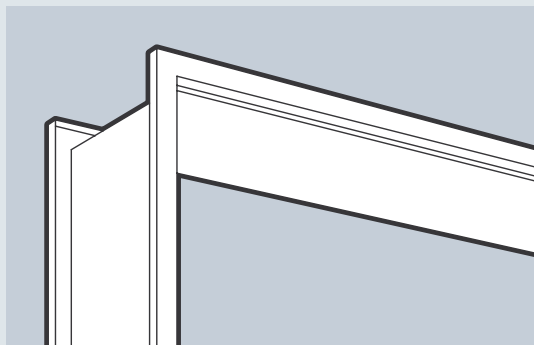
The Hörmann frame system guarantees a stable wall connection for optimal and long-lasting door functionality.

Advantages at a glance:

- Sheet thickness 1.5 mm or 2.0 mm for block frames (62 / 55 mm and 62 / 75 mm)
- Optionally with floor recess 30 mm
- Hörmann lining groove (except for block frames 62 / 55 mm and 62 / 75 mm)
- As standard galvanized and with powder-coated primer in Grey white (similar to RAL 9002)
- Optionally in RAL to choose, in NCS colours or in stainless steel
- Fast and easy fitting using fixing brackets, including steel spacers
- Mortar-free fitting to brickwork and concrete for T30 / EI₂30 and T90 / EI₂90

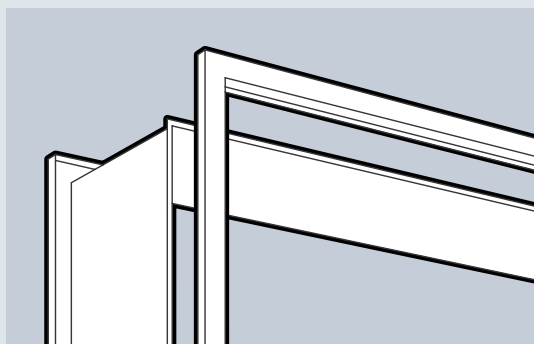
Frame types

- Corner frame 95 mm
- Block frame 62 / 55 mm (for flush fit on both sides of STS doors)
- Block frame 62 / 75 mm (for flush fit on one side of STS doors)
- Block frame 95 / 55 mm
- Block frame 95 / 75 mm
- Block frame 105 / 100 mm
- Profile frame with up to 375 mm wall width
- Special frames with edge recess for an individual appearance or with double rebate for higher acoustic insulation (up to 42 dB)



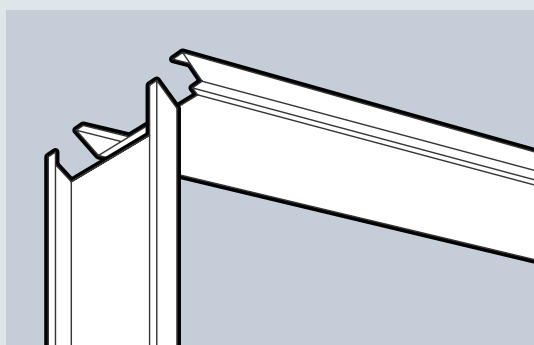
1-piece frame

Welded in the mitred area for solid walls and fitting in partition walls (door width up to 2400 mm)



Double-shell frame (optional)

Welded in the mitred area and separated in the lining groove for renovations and retrofitting



3-piece frames

Separated in the mitred area for simple clamp / screw fitting and for retrofitting in partition walls (door width up to 2500 mm)

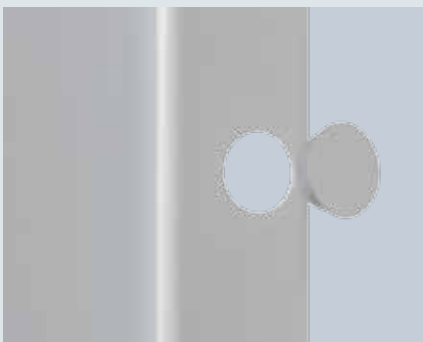


Lining groove

Hörmann steel frames for STS / STU doors are equipped with lining grooves in the frame as standard. The special lining groove means that bonding the seals is not necessary. This facilitates subsequent on-site coating or maintenance (except for block frames 62 / 55 mm and 62 / 75 mm).

Flush-fitting stainless steel lock plate with edge protection // NEW

Steel and stainless steel doors are optionally equipped with a flush-fitting, stainless steel lock plate incl. edge guard. This effectively protects the door priming and coating. For doors prepared for an electric strike, the doors come with a lock plate with a sample electric strike, which can be later exchanged for an original electric strike.



Flush cover caps

For all frames, flush cover caps provide an attractive appearance. All frames in colours RAL 9002 or RAL 9016 are supplied with cover caps in a colour matching the frame. Cover caps for frames in RAL to choose are supplied in black, and for stainless steel frames are supplied in a stainless steel colour.

Mortar-free fitting to brickwork and concrete for T30 / EI₂30 and T90 / EI₂90

The high-quality STS / STU fire-rated doors can be fitted quickly and neatly without mortar. This ensures, to a large extent, a clean surface without any contamination or damage. This is particularly advantageous with stainless steel frames and powder-coated frames. If there is a gap bigger than 5 mm between the brickwork and frame when installed, the gap must only be filled with commercially available, fire-proof mineral wool. Infilling of the block frames with mineral wool takes place at the factory.



Corner frame without mortar

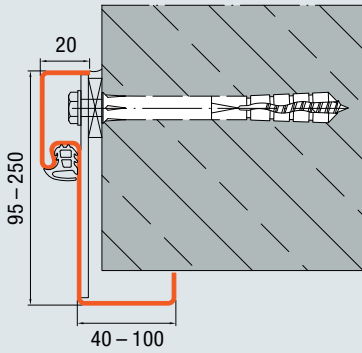


Block frame without mortar, with mineral wool back-filling completed at the factory

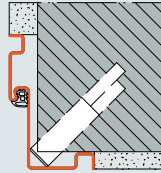
Frame system

A comprehensive, "high-profile" programme

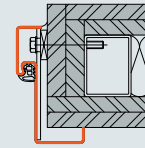
Corner frame



Concrete / brickwork (standard)

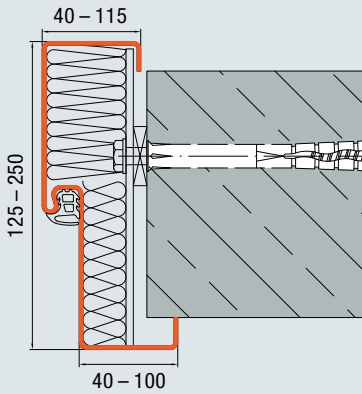


Anchor fitting
(concrete / brickwork)

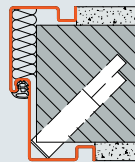


Screw fixing
(partition wall)

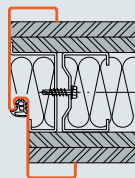
Profile frame



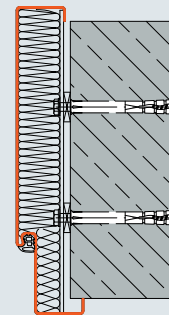
Concrete / brickwork
(standard plug-and-screw fitting
for profile width up to 250 mm, 1 dowel)



Anchor fitting
(concrete / brickwork)

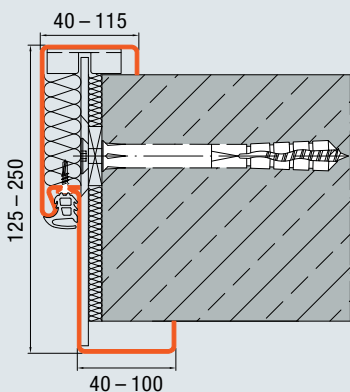


Screw fixing
(partition wall)

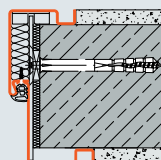


2 dowels for plug-and-screw fitting
for profile widths above 250 mm
(concrete / brickwork)

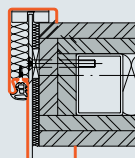
Double-shell profile frame



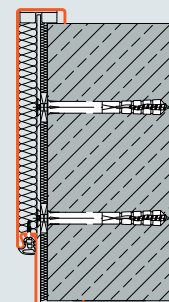
Concrete / brickwork (standard)



Plug-and-screw fitting
(concrete / brickwork)



Screw fixing
(partition wall)

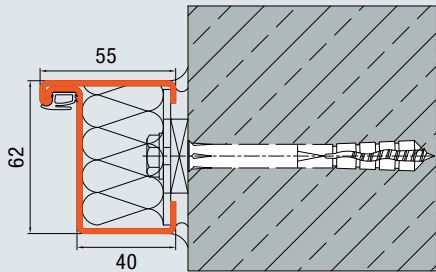


Plug-and-screw fitting
(concrete / brickwork, two dowels)

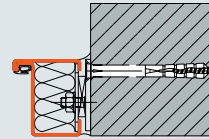


**Simple flush-fitting to wall
using a patented fitting set**

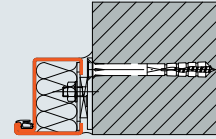
Block frame 62 / 55 mm and 62 / 75 mm



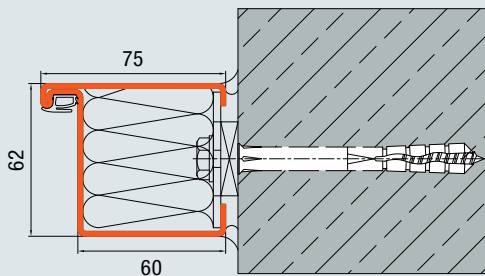
Block frame 62 / 55
Concrete / brickwork (standard)



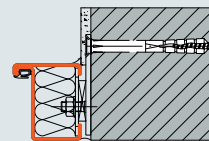
Plug-and-screw fitting
(concrete / brickwork, flush-fitting
wall fitting, hinge side)



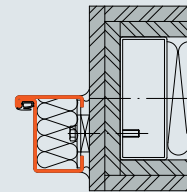
Plug-and-screw fitting
(concrete / brickwork, flush-fitting
wall fitting, opposite hinge side)



Block frame 62 / 75
Concrete / brickwork (standard)

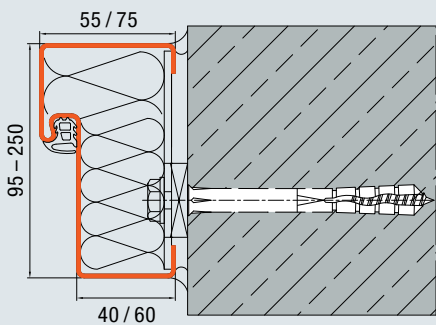


Plug-and-screw fitting
(Brickwork, anchor plate 95,
plastered, flush-fitting wall fitting,
hinge side)

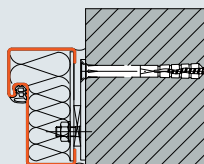


Screw fixing
(partition wall)

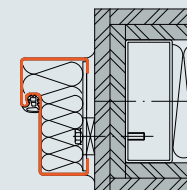
Block frame 95 / 55 mm, 95 / 75 mm and 105 / 100 mm



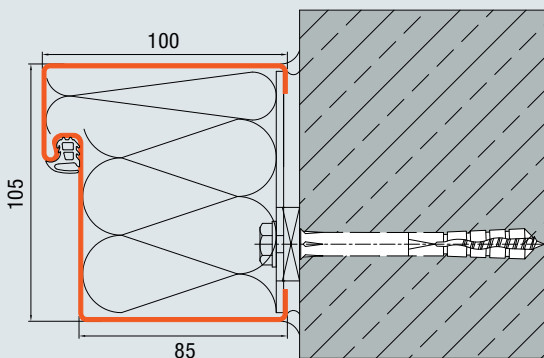
Block frame 95 / 55, 95 / 75
Concrete / brickwork (standard)



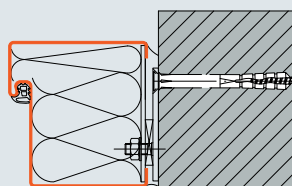
Plug-and-screw fitting
(concrete / brickwork, flush-fitting
wall fitting, hinge side)



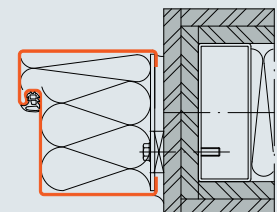
Screw fixing
(partition wall)



Block frame 105 / 100
Brickwork (standard)



Plug-and-screw fitting
(brickwork, flush-fitting wall fitting,
hinge side)



Screw fixing
(partition wall)

All dimensions in mm.

ThyssenKrupp Quarter, Essen
Architects: JSWD Architekten, Cologne



Hörmann products

- STS flush-fitting
T30 / EI₂30 fire-rated doors
- T30 steel hollow profiled section
doors HE 310 / 330 S-Line
- T30 steel fire-rated doors H3

T30 / EI₂30 fire-rated door STS 30 / STU 30

Single- and double-leaf, flush, glued over the entire surface



STS 30
Flush



STU 30
Thick rebate

T30

Main function
T30/EI₂30
Fire-retarding

EI₂30

U_D

Thermally insulated
 $U_D = 1.3 - 2.5 \text{ W}/(\text{m}^2 \cdot \text{K})$
For doors without
glazing or top parts.
Dependent on door size.

RS

Smoke-tight
With retractable
bottom seal
(without top panel)

Sm

dB

Acoustic-rated
Up to 32 dB
with retractable
bottom seal

Up to 42 dB with
double rebate frame

WK 2

Break-in-resistant
WK 2 (STU 30)

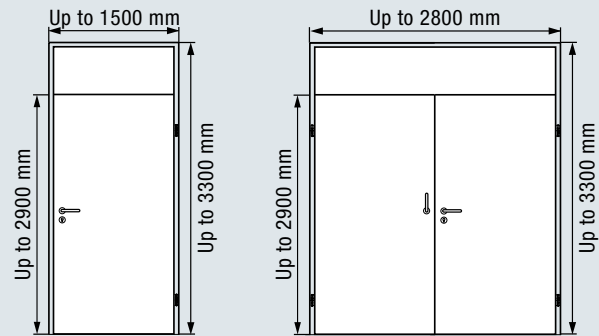
WK 3

Break-in-resistant
WK 3 (STU 30)

Optional extras

Frame types Page 14

Glazing variants Page 28



The size information is related to the overall frame dimension (block frame).

Fire-rated door

Door leaf

Single-leaf

62 mm

Sheet thickness

1.0 mm

Rebate type

STS 30:
Flush
STU 30:
Thick rebate

Double-leaf

62 mm

1.0 mm

STS 30:
Flush
STU 30:
Thick rebate

Fitting in

Brickwork	≥ 115 mm	≥ 115 mm
Concrete	≥ 100 mm	≥ 100 mm
Gas concrete	≥ 200 mm	≥ 200 mm
Partition walls	≥ 100 mm	≥ 100 mm
Cladded steel columns / girders	≥ F60 A	≥ F60 A

STS 30 / STU 30	Single-leaf		Double-leaf	
	Width	Height	Width	Height
Size range***				
Overall frame dimension (ordering size) block frame	615 – 1500	1745 – 2900	1129** – 2800	1745 – 2900
With fixed top panel		1845 – 3300		1845 – 3300
Top panel height		300 – 1000		300 – 1000
Steel frame nominal size	545 – 1380	1710 – 2840	1059** – 2680	1710 – 2840
Clear passage dimension*	505 – 1300	1690 – 2800	1019** – 2600	1690 – 2800
Traffic leaf clear passage dimension*			511** – 1309	

* With an opening angle of 90° and without fittings, the clear passage width is reduced by 57 mm (STS) or 29 mm (STU), for double-leaf doors by 114 mm (STS) or 58 mm (STU).

** Depending on the selected overhead door closer, larger minimum door dimensions may be required!

*** Larger door sizes are available on request.

All information in accordance with approval and technical feasibility.

Actual dimensions may differ depending on the door frame type, depth, or width-height ratio.

All dimensions in mm

Trumpf staff restaurant, Ditzingen

Architect: Barkow-Leibinger Architekten, Berlin



- Hörmann products**
- STS flush-fitting T30 / EI₂30 stainless steel fire-rated doors
 - T30 fire-rated doors H 3
 - Multi-purpose doors D45
 - Industrial sectional door

T30 / EI₂30 stainless steel fire-rated door STS 30 / STU 30

Single- and double-leaf, flush, glued over the entire surface



STS 30
Flush



STU 30
Thick rebate

Main function
T30 / EI₂30
Fire-retarding

T30

EI₂30

U_D

Thermally insulated
 $U_D = 1.3 - 2.5 \text{ W}/(\text{m}^2 \cdot \text{K})$
For doors without
glazing or top parts.
Dependent on door size.

Additional functions
(with corresponding
equipment,
see pages 8 – 9)

RS

Smoke-tight
With retractable
bottom seal
(without top panel)

Sm

dB

Acoustic-rated
Up to 32 dB
with retractable
bottom seal

Up to 42 dB with
double rebate frame

WK 2

Break-in-resistant
WK 2 (STU 30)

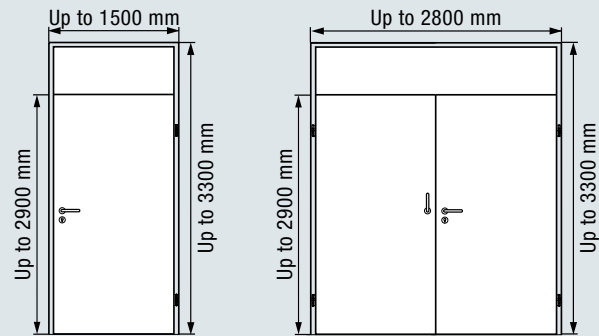
WK 3

Break-in-resistant
WK 3 (STU 30)

Optional extras

Frame types Page 14

Glazing variants Page 28



The size information is related to the overall frame dimension (block frame).

Stainless steel fire-rated door

Door leaf

Single-leaf

Double-leaf

Sheet thickness

Min. 0.80 mm

Min. 0.80 mm

Rebate type

STS 30:
Flush
STU 30:
Thick rebate

STS 30:
Flush
STU 30:
Thick rebate

Fitting in

Brickwork	≥ 115 mm	≥ 115 mm
Concrete	≥ 100 mm	≥ 100 mm
Gas concrete	≥ 200 mm	≥ 200 mm
Partition walls	≥ 100 mm	≥ 100 mm
Cladded steel columns / girders	≥ F60 A	≥ F60 A

STS 30 / STU 30	Single-leaf		Double-leaf	
	Width	Height	Width	Height
Size range***				
Overall frame dimension (ordering size) block frame	615 – 1500	1745 – 2900	1129** – 2800	1745 – 2900
With fixed top panel		1845 – 3300		1845 – 3300
Top panel height		300 – 1000		300 – 1000
Steel frame nominal size	545 – 1380	1710 – 2840	1059** – 2680	1710 – 2840
Clear passage dimension*	505 – 1300	1690 – 2800	1019** – 2600	1690 – 2800
Traffic leaf clear passage dimension*			511** – 1309	

* With an opening angle of 90° and without fittings, the clear passage width is reduced by 57 mm (STS) or 29 mm (STU), for double-leaf doors by 114 mm (STS) or 58 mm (STU).

** Depending on the selected overhead door closer, larger minimum door dimensions may be required!

*** Larger door sizes are available on request.

All information in accordance with approval and technical feasibility.

Actual dimensions may differ depending on the door frame type, depth, or width-height ratio.

All dimensions in mm

21

Labels 2, Berlin

Architects: HHF Architekten, Basel



Hörmann products

- STS flush-fitting
T30 / EI₂30 fire-rated doors

T90 / EI₂90 fire-rated door STS 90 / STU 90

Single- and double-leaf, flush, glued over the entire surface



STS 90
Flush



STU 90
Thick rebate

Main function

T90 / EI₂90 Fire-proof

T90

EI₂90

U_D

Thermally insulated

U_D = 1.3 – 2.5 W/(m²·K)

For doors without glazing or top parts. Dependent on door size.

RS

Smoke-tight

With retractable bottom seal (without top panel)

Sm

dB

Acoustic-rated

Up to 37 dB with retractable bottom seal

WK 2

Break-in-resistant
WK 2 (STU 90)

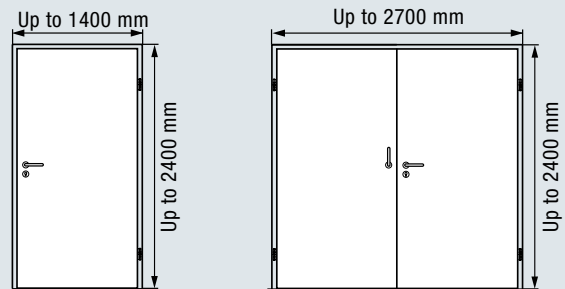
WK 3

Break-in-resistant
WK 3 (STU 90)

Optional extras

Frame types Page 14

Glazing variants Page 28



The size information is related to the overall frame dimension (block frame).

Fire-rated door

Door leaf

62 mm

62 mm

Sheet thickness

1.0 mm

1.0 mm

Rebate type

STS 90:

Flush

STU 90:

Thick rebate

STS 90:

Flush

STU 90:

Thick rebate

Fitting in

Brickwork	≥ 240 mm	≥ 240 mm
Concrete	≥ 140 mm	≥ 140 mm
Gas concrete	≥ 200 mm	≥ 200 mm
Partition walls	≥ 150 mm	≥ 150 mm
Cladded steel columns / girders	≥ F120 A	≥ F120 A

STS 90 / STU 90	Single-leaf		Double-leaf	
	Width	Height	Width	Height
Size range***				
Overall frame dimension (ordering size) block frame	615 – 1400	1745 – 2400	1129** – 2700	1745 – 2400
Steel frame nominal size	545 – 1280	1710 – 2340	1059** – 2580	1710 – 2340
Clear passage dimension*	505 – 1200	1690 – 2300	1019** – 2500	1690 – 2300
Traffic leaf clear passage dimension*			511** – 1309	

* With an opening angle of 90° and without fittings, the clear passage width is reduced by 57 mm (STS) or 29 mm (STU), for double-leaf doors by 114 mm (STS) or 58 mm (STU).

** Depending on the selected overhead door closer, larger minimum door dimensions may be required!

*** Larger door sizes are available on request.

All information in accordance with approval and technical feasibility.

Actual dimensions may differ depending on the door frame type, depth, or width-height ratio.

All dimensions in mm

Tower 185, Frankfurt

Architect: Christoph Mäckler Architekten, Frankfurt am Main



Pre-certified by

DGNB

Deutsche Gesellschaft für Nachhaltiges Bauen e.V.
German Sustainable Building Council



Hörmann products

- T30 steel fire-rated doors H3
- T90 steel fire-rated doors H16
- Steel smoke-tight doors RS 55
- Multi-purpose doors D65
- Multi-purpose doors D55
- T30 / EI₂30 stainless steel fire-rated doors STS / STU



T90 / EI₂90 stainless steel fire-rated door STS 90 / STU 90

Single- and double-leaf, flush, glued over the entire surface



STS 90
Flush



STU 90
Thick rebate

Main function
T90 / EI₂90 Fire-proof

T90

EI₂90

U_D

Thermally insulated
 $U_D = 1.3 - 2.5 \text{ W}/(\text{m}^2 \cdot \text{K})$
For doors without
glazing or top parts.
Dependent on door size.

Additional functions
(with corresponding
equipment,
see pages 8 – 9)

RS

Smoke-tight
With retractable
bottom seal
(without top panel)

Sm

dB

Acoustic-rated
Up to 37 dB
with retractable
bottom seal

WK 2

Break-in-resistant
WK 2 (STU 90)

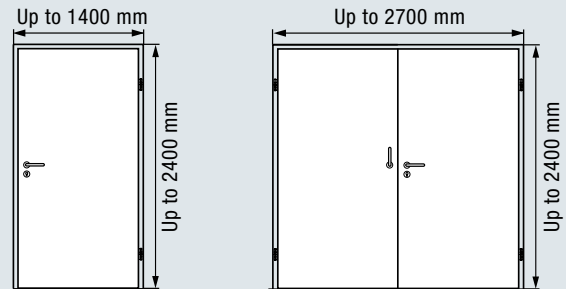
WK 3

Break-in-resistant
WK 3 (STU 90)

Optional extras

Frame types Page 14

Glazing variants Page 28



The size information is related to the overall frame dimension (block frame).

Stainless steel fire-rated door

Door leaf

Single-leaf

Double-leaf

62 mm

62 mm

Sheet thickness

Min. 0.80 mm

Min. 0.80 mm

Rebate type

STS 90:

Flush

STU 90:

Thick rebate

STS 90:

Flush

STU 90:

Thick rebate

Fitting in

Brickwork	≥ 240 mm	≥ 240 mm
Concrete	≥ 140 mm	≥ 140 mm
Gas concrete	≥ 200 mm	≥ 200 mm
Partition walls	≥ 150 mm	≥ 150 mm
Cladded steel columns / girders	≥ F120 A	≥ F120 A

STS 90 / STU 90	Single-leaf		Double-leaf	
	Width	Height	Width	Height
Size range***				
Overall frame dimension (ordering size) block frame	615 – 1400	1745 – 2400	1129** – 2700	1745 – 2400
Steel frame nominal size	545 – 1280	1710 – 2340	1059** – 2580	1710 – 2340
Clear passage dimension*	505 – 1200	1690 – 2300	1019** – 2500	1690 – 2300
Traffic leaf clear passage dimension*			511** – 1309	

* With an opening angle of 90° and without fittings, the clear passage width is reduced by 57 mm (STS) or 29 mm (STU), for double-leaf doors by 114 mm (STS) or 58 mm (STU).

** Depending on the selected overhead door closer, larger minimum door dimensions may be required!

*** Larger door sizes are available on request.

All information in accordance with approval and technical feasibility.

Actual dimensions may differ depending on the door frame type, depth, or width-height ratio.

All dimensions in mm

Steel multi-purpose door STS / STU

Single- and double-leaf, flush, glued over the entire surface



STS
Flush



STU
Thick rebate

Main function
Multi-purpose door

MZ

Thermally insulated
 $U_D = 1.3 - 2.5 \text{ W/(m}^2\cdot\text{K)}$
For doors without
glazing or top parts.
Dependent on door size.

U_D

Additional functions
(with corresponding
equipment,
see pages 8 – 9)

RS

Smoke-tight
With retractable
bottom seal
(without top panel)

Sm

dB

Acoustic-rated
Up to 32 dB with
retractable bottom
seal; up to 42 dB with
double rebate frame

WK 2

Break-in-resistant
WK 2
(STU, without top panel)

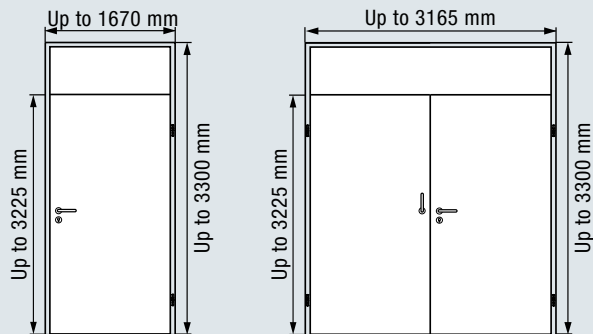
WK 3

Break-in-resistant
WK 3
(STU, without top panel)

Optional extras

Frame types Page 14

Glazing variants Page 28



The size information is related to the overall frame dimension (block frame).

Steel door	Single-leaf	Double-leaf
Door leaf	62 mm	62 mm
Sheet thickness	1.0 mm	1.0 mm
Rebate type	STS: Flush STU: Thick rebate	STS: Flush STU: Thick rebate

Fitting in

Brickwork	•	•
Concrete	•	•
Gas concrete	•	•
Partition walls	•	•
Cladded steel columns / girders	•	•

Steel multi-purpose door	Single-leaf		Double-leaf	
	Width	Height	Width	Height
Size range***				
Overall frame dimension (ordering size) block frame	610 – 1670	855 – 3225	1110** – 3165	855 – 3225
With fixed top panel		1100 – 3300		1100 – 3300
Top panel height		300 – 1000		300 – 1000
Steel frame nominal size	540 – 1550	820 – 3165	1040 – 3045	820 – 3165
Clear passage dimension*	500 – 1470	800 – 3125	1000 – 2965	800 – 3125
Opening width of traffic leaf*			500 – 1460	

* With an opening angle of 90° and without fittings, the clear passage width is reduced by 57 mm (STS) or 29 mm (STU), for double-leaf doors by 114 mm (STS) or 58 mm (STU).

** Depending on the selected overhead door closer, larger minimum door dimensions may be required!

*** Larger door sizes are available on request.

All information in accordance with approval and technical feasibility.
Actual dimensions may differ depending on the door frame type, depth, or width-height ratio.

Stainless steel multi-purpose door

STS / STU



Single- and double-leaf, flush, glued over the entire surface



STS
Flush



STU
Thick rebate

MZ

Main function
Multi-purpose door

U_D

Thermally insulated
 $U_D = 1.3 - 2.5 \text{ W/(m}^2\cdot\text{K)}$
For doors without glazing or top parts.
Dependent on door size.

RS

Smoke-tight
With retractable bottom seal
(without top panel)

Sm

dB

Acoustic-rated
Up to 32 dB with retractable bottom seal; up to 42 dB with double rebate frame

WK 2

Break-in-resistant
WK 2
(STU, without top panel)

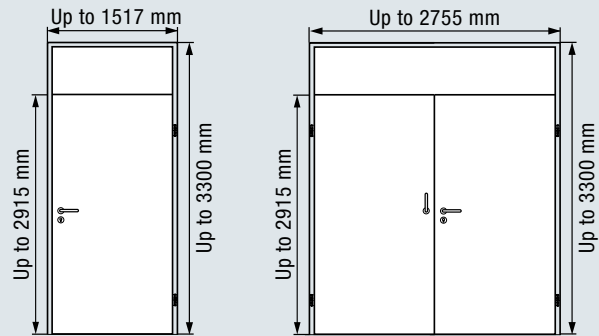
WK 3

Break-in-resistant
WK 3
(STU, without top panel)

Optional extras

Frame types Page 14

Glazing variants Page 28



The size information is related to the overall frame dimension (block frame).

Stainless steel door

Door leaf

Single-leaf

62 mm

Double-leaf

62 mm

Sheet thickness

0.8 mm

0.8 mm

Rebate type

STS:
Flush

STU:
Thick rebate

STS:
Flush

STU:
Thick rebate

Fitting in

Brickwork	•	•
Concrete	•	•
Gas concrete	•	•
Partition walls	•	•
Cladded steel columns / girders	•	•

Stainless steel multi-purpose door	Single-leaf		Double-leaf	
	Width	Height	Width	Height
Size range***				
Overall frame dimension (ordering size) block frame	610 – 1517	855 – 2915	1110** – 2755	855 – 2915
With fixed top panel		1100 – 3300		1100 – 3300
Top panel height		300 – 1000		300 – 1000
Steel frame nominal size	540 – 1397	820 – 2855	1040** – 2635	820 – 2855
Clear passage dimension*	500 – 1317	800 – 2815	1000 – 2550	800 – 2815
Opening width of traffic leaf*			500 – 1319	

* With an opening angle of 90° and without fittings, the clear passage width is reduced by 57 mm (STS) or 29 mm (STU), for double-leaf doors by 114 mm (STS) or 58 mm (STU).

** Depending on the selected overhead door closer, larger minimum door dimensions may be required!

*** Larger door sizes are available on request.

All information in accordance with approval and technical feasibility. Actual dimensions may differ depending on the door frame type, depth, or width-height ratio.

All dimensions in mm

Glazing variants

Designs and shapes



Attached steel profile in Grey white, RAL 9002 (standard)



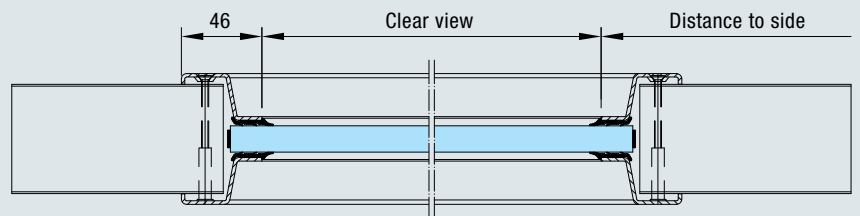
Attached stainless steel profile



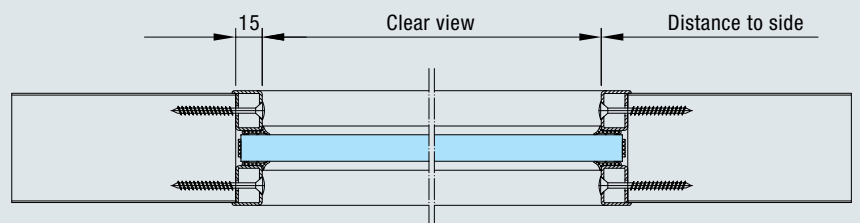
Flush steel / stainless steel profile

Steel and stainless steel glazing frame

The glazing profiles are delivered as standard in galvanized steel, matching the door surface finish with powder-coated primer in 7 preferred colours or RAL to choose. On request the profiles can also be delivered in brushed stainless steel. The flush glazing beads are particularly suited to architectural solutions of the highest quality.

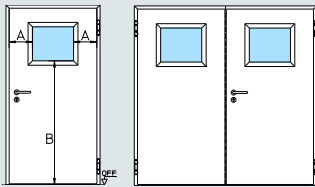


Glazing with attached steel profile without visible fitting on the hinge side for rectangular and round glazing

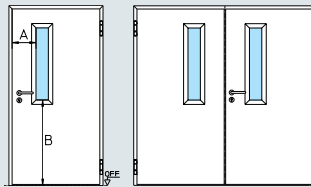


Glazing with flush steel profile for rectangular glazing (only possible for T30 / EI₂30)

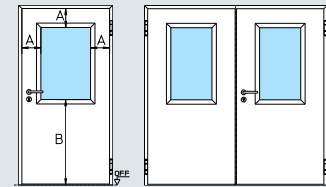
Glazing is supplied in a standard size that matches the door size proportionally and provides for an attractive look and uniform appearance with its slim profiles. Lever handles do not disturb the line of sight through the glass.



Glazing view 0
Distance to side A: 270 mm
Bottom section height B: 1400 mm



Glazing view 1
Distance to side A: 270 mm
Bottom section height B: 965 mm



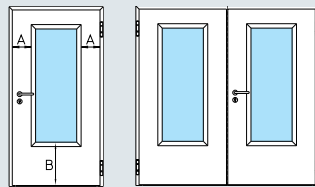
Glazing view 2
Distance to side A: 270 mm
Bottom section height B: 965 mm

Standard door leaf width BR	View 0	
	Clear view	Min. door leaf width
750	215 × 385 / 635*	645
875	340 × 385 / 635*	770
1000	465 × 385 / 635*	895
1062.5	528 × 385 / 635*	958
1125	590 × 385 / 635*	1020

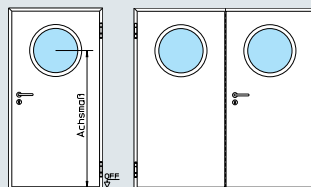
* From BR height 2250 mm

View 1	
Clear view	Min. door leaf width
140 × 815	570

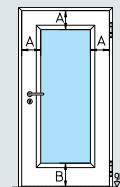
View 2	
Clear view	Min. door leaf width
215 × 815	645
340 × 815	770
465 × 815	895
528 × 815	958
590 × 815	1020



Glazing view 3
Distance to side A: 270 mm
Bottom section height B: 500 mm



Round glazing
Axis dimension: Height from bottom edge of door leaf to centre of cut-out 1550 mm



Glazing to choose
Distance to side A: 215 mm
Bottom section height B: see table below

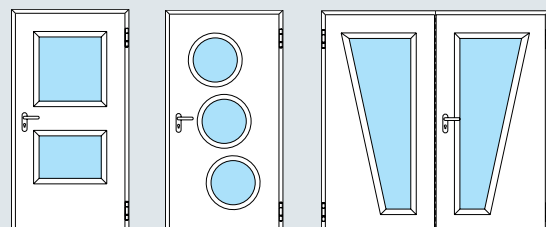
Standard door leaf width BR	View 3	
	Clear view	Min. door leaf width
675	140 × 1280	570
875	340 × 1280	770
1000	465 × 1280	895
1062.5	528 × 1280	958
1125	590 × 1280	1020
1250	715 × 1280	1145

Round glazing	
Clear view	Min. door leaf width
∅ 400	830
∅ 500	930

Glazing to choose		
Door type	Bottom section height B	Maximum clear view
STS 30	Min. 300	879 × 2371
STS 90	Min. 715	476 × 976
STU 30	Min. 300	879 × 2371
STU 90	Min. 715	476 × 976
STS/STU	Min. 215	1052 × 2691

Special glazing available on request

Besides the glazing referred to above we also supply special single or multi-pane glazing in various forms and arrangements within the permitted distances to the sides, bottom section heights and glazing size ranges.

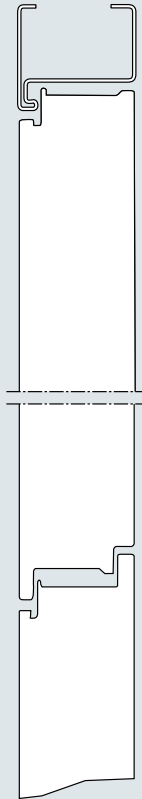


Fixed top panels and ventilation grilles

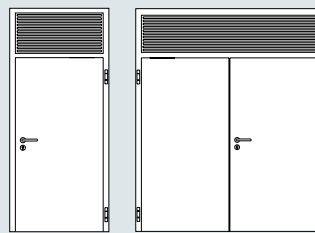
Everything is possible

Fixed top panels

The fixed top panel allows you to individually design room-high doors for your facility. They offer a harmonious look thanks to the surrounding vertical frame profiles.



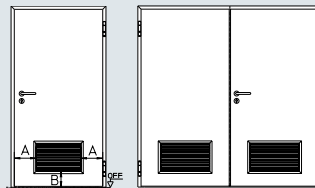
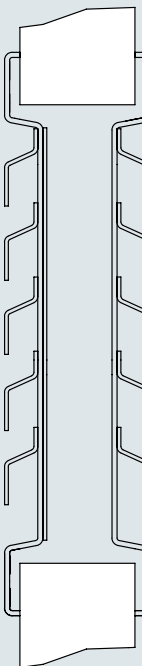
With steel panel



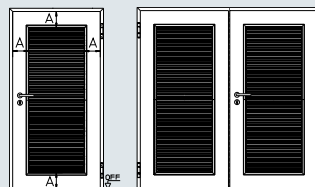
With ventilation grille
(Only STS / STU multi-purpose doors)

Ventilation grilles

All ventilation grilles consist of safety sheet metal with an internal perforated steel sheet. They are supplied galvanized and with powder-coated primer in Grey white (similar to RAL 9002) as well as RAL to choose or stainless steel (V2 A) on request. Also optionally available are versions with insect protection fabric, galvanized steel with mesh size 1.4 mm.



Grille height: 365 mm
Distance to side A: Min. 215 mm
Bottom section height B: 215 mm



Size to choose
Distance to side A: Min. 215 mm
Width: Min. 250 mm
Max. 1140 mm
Height: Min. 250 mm
Max. 2395 mm

Overview of fixed top panels

	STS / STU	STS 30 / STU 30
Steel panel	●	●
Ventilation grille	●	-

Sizes

Min. top panel height	300
Max. top panel height	1000
Max. door set height	3300
Max. door height	2800

Operators are not possible for fixed top panels.

Overview of ventilation grilles

	STS / STU	STS 30 / STU 30
Standard	●	-
Size to choose*	●	-

Standard sizes

Overall frame dimension	Door leaf width	
	Standard	At least
305 × 365	750	655
430 × 365	875	780
555 × 365	1000	905
618 × 365	1062.5	967.5
690 × 365	1125	1030
805 × 365	1250	1155

* Please note the maximum size of the ventilation grille.

Optional equipment

According to your requirements



Lever handle sets

Operational requirements and individual wishes demand a comprehensive range of fittings in the facility. Fittings in the form of knobs, levers or anti-panic handle sets with short escutcheon or roses with various handle shapes are available.

Surface finishes are available in different coloured plastic designs, F1 aluminium and stainless steel.



Locks

Over and above normal usage of a door, sometimes special lock functions or additional locks are required.

Optional special and additional locks:

- Double cylinder lock (locked with 2 different cylinders)
- Bolt lock, additionally prepared for profile cylinder
- Block lock
- Motor lock
- Anti-panic lock, self-locking



Door closers

Modern door closer systems, such as slide rail or integrated (concealed) door closers, allow safe and quiet closing of the door elements in everyday use, and are inconspicuously integrated into the door's appearance. These systems are available in the colour silver (standard), in RAL to choose or with a stainless steel look.



Electrical equipment

In the facility, door systems are often equipped with alarm, escape-route security or access control systems. Depending on your requirement, different components, such as a latch contact, electric door strike or motor lock, are possible.



Emergency exit locks, panic door locks

Specific hardware and lock fittings are stipulated for escape doors to DIN EN 179 and DIN EN 1125. Hörmann offers a range of equipment variants for every requirement, such as emergency exit locks according to DIN EN 179 or panic locks according to DIN EN 1125.



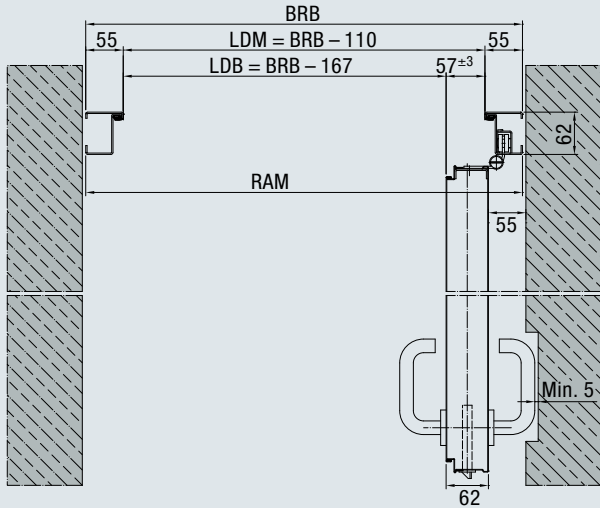
Hold-open devices / operators

Fire and smoke-protection doors must be equipped with a special means of closing that ensures that they close automatically. By using hold-open devices, automatic closing can be put out of action in a controlled manner and doors can be permanently held open.

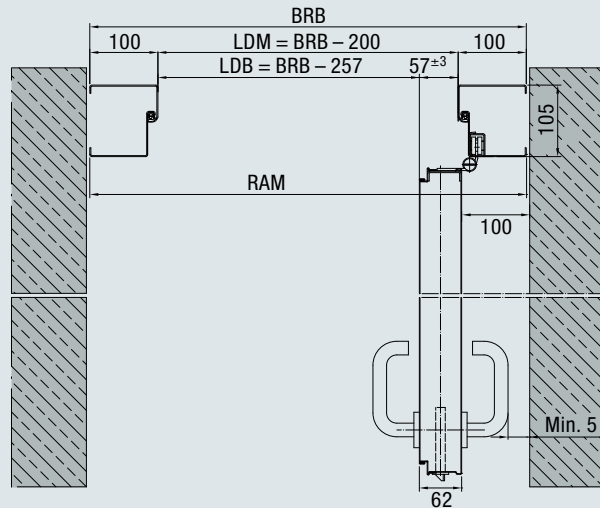
Clear passage widths for STS doors

At an opening angle of 90°, without fittings

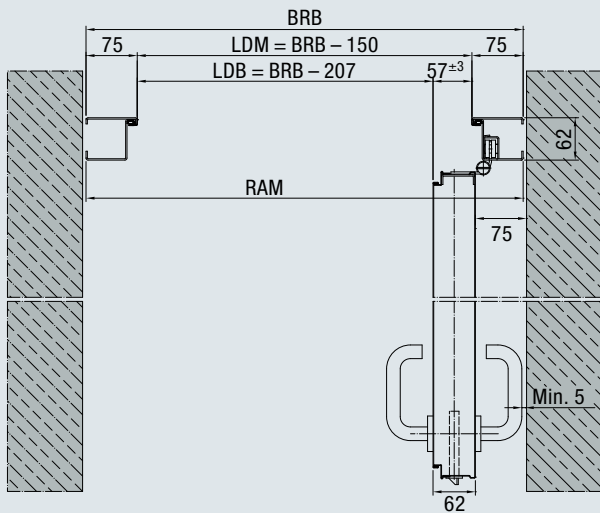
Block frame 62 / 55 (STS)



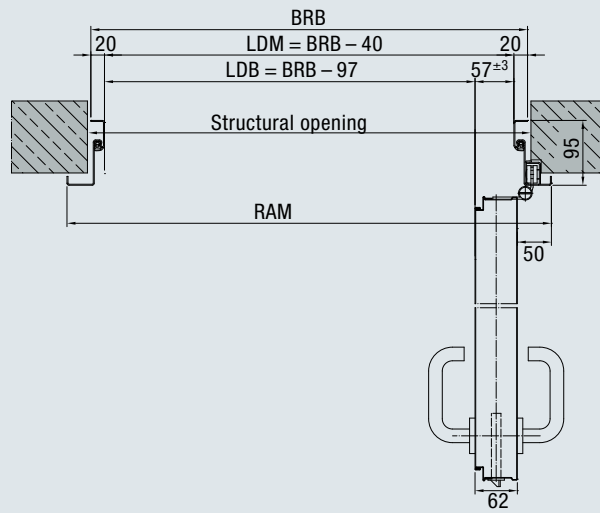
Block frame 105 / 100 (STS)



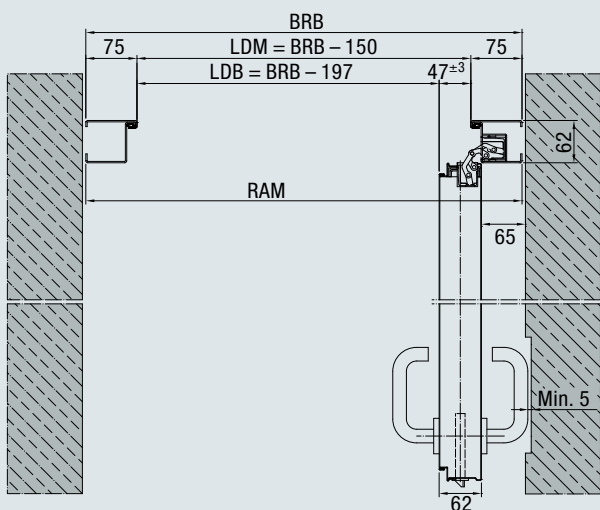
Block frame 62 / 75 (STS)



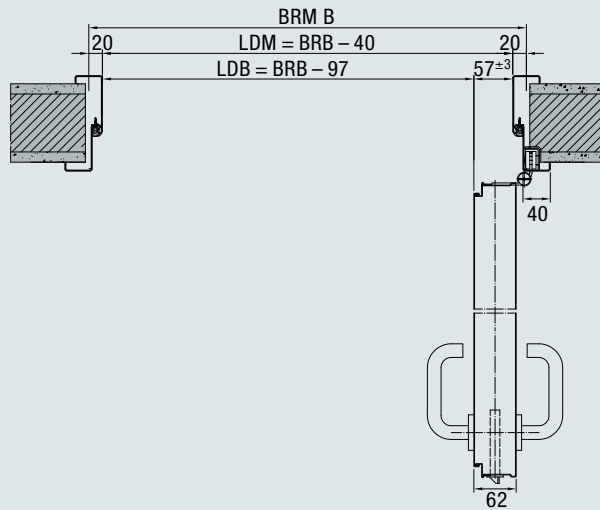
Corner frame (STS)



Block frame 62 / 75 (STS) with concealed hinge



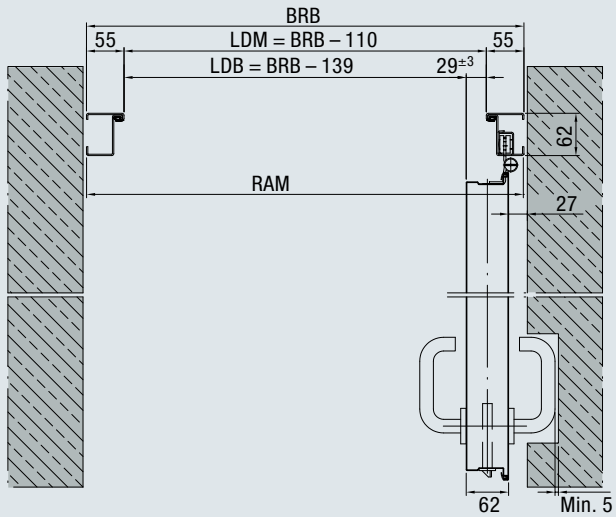
Double-shell profile frame (STS)



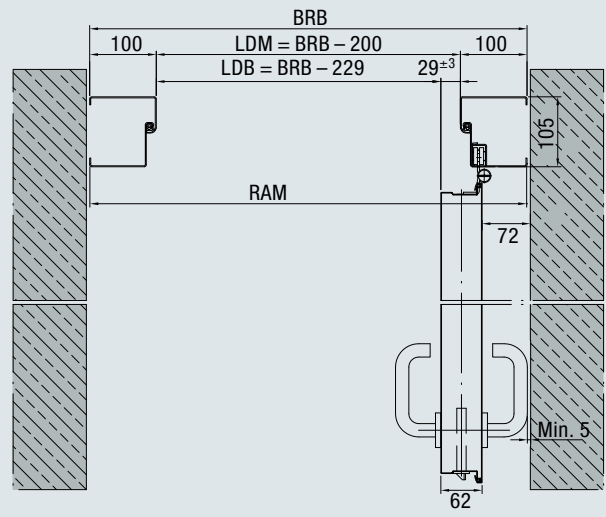
Clear passage widths for STU doors

At an opening angle of 90°, without fittings

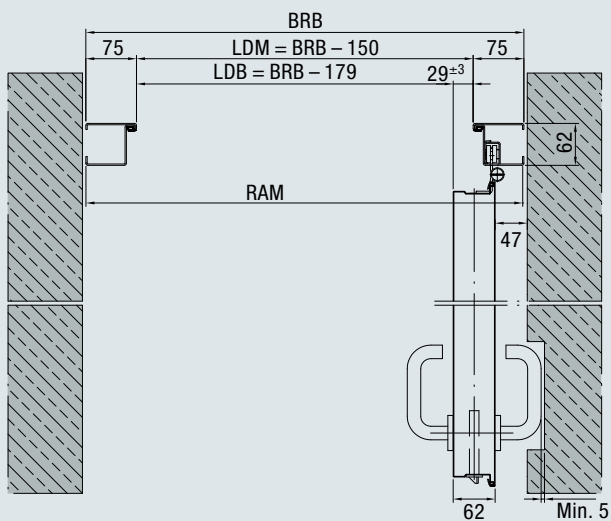
Block frame 62 / 55 (STU)



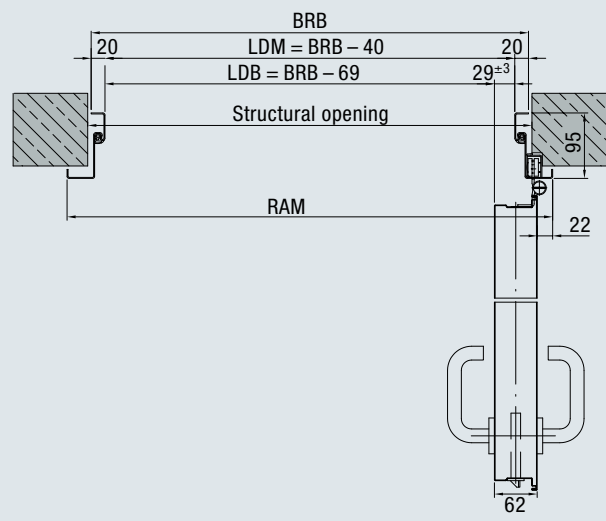
Block frame 105 / 100 (STU)



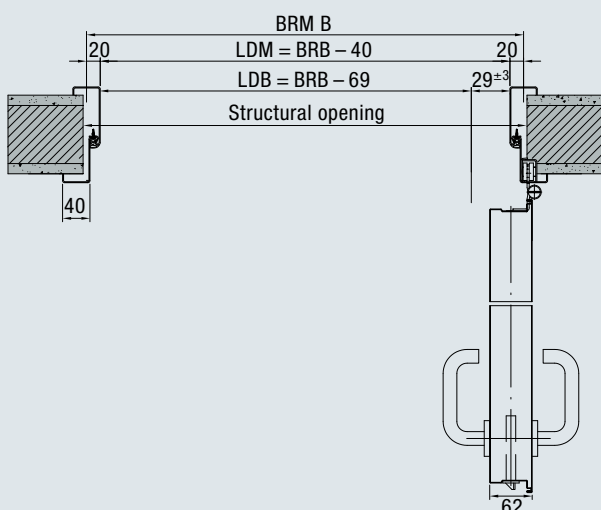
Block frame 62 / 75 (STU)



Corner frame (STU)



Double-shell profile frame (STU)



Explanation of dimensions

- LDM Clear passage dimension
- LDB Clear passage width
- BRB Nominal size width
- RAM Overall frame dimension

All dimensions in mm

Hörmann product range

Everything from a single source for your construction project

1 Sectional doors

These space-saving door systems can be adapted to different industrial facilities using various track applications. Hörmann offers you tailored solutions for every application.

2 Rolling shutters and rolling grilles

Thanks to a simple construction with just a few components, rolling shutters are both economical and sturdy. Hörmann supplies rolling shutters in widths and heights of up to 11.75 m and 9 m respectively, or as special doors which are even larger.

3 High-speed doors

Hörmann high-speed doors are used both inside and as exterior doors to optimise the flow of traffic, improve room conditions and save energy. The Hörmann programme includes vertically and horizontally opening transparent doors with flexible curtains.

4 Loading technology

Hörmann offers you complete loading systems for the logistics sector. The advantages: reliable planning, dependable execution of construction work and high functionality thanks to precisely matched components.

5 Fire and multi-purpose sliding doors

Hörmann can provide you with single or double-leaf sliding door solutions suitable for all areas and required fire protection classes, or without fire protection.

6 Multi-function doors and reinforced internal doors

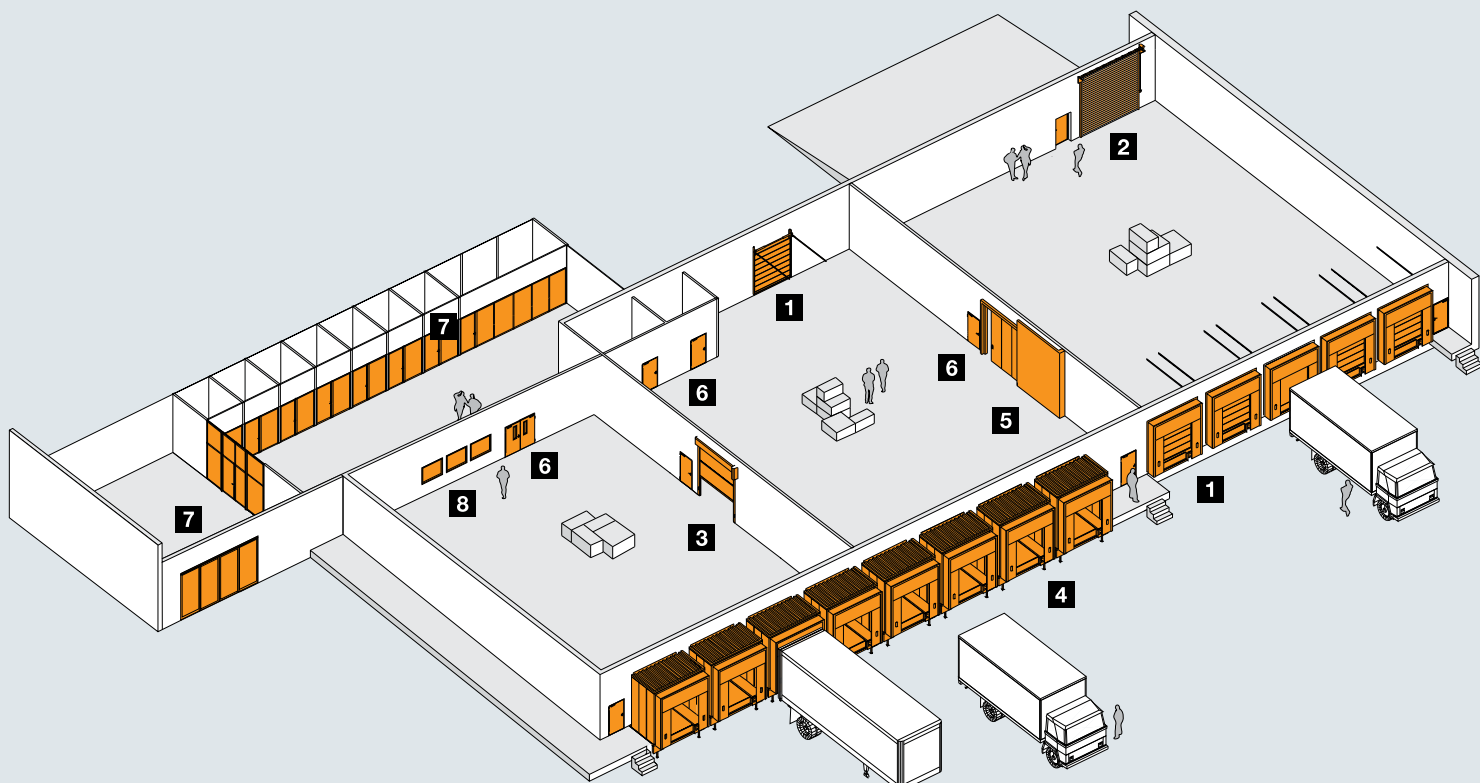
Hörmann multi-function doors and reinforced internal doors are suitable for indoor and outdoor use. Our single and double-leaf doors can be used wherever robust door elements are required. With numerous additional functions, such as fire and smoke protection, acoustic insulation or burglar protection.

7 Box frame parts

For areas in which appearance is important, such as administrative buildings, Hörmann offers you fire and smoke protection doors as well as steel and aluminium fixed glazing and automatic sliding doors, also suited for special fire protection requirements.

8 Visibility windows

Hörmann visibility glazings are used as windows or room-high elements to provide more light and better visibility.





Quick service with testing, maintenance and repairs
Our extensive service network means that we are always nearby and at your service around the clock.

