

The open air season has officially been opened.  
All year round.

**markilux**

safe timeless beautiful

markilux project – Free-standing awning systems made in Germany







## With regard to freedom of design, we first considered a wall.

Escape the indoors in style. Spend quality time in a protected and shaded location. As a leading awning manufacturer, we know exactly what our customers have come to expect from a high-quality solar and wet weather protection system.

For this reason, we have been thinking about how to make our awnings even more flexible, over and above the familiar installation options of using walls or ceilings. Our aim is to provide people with even more options and freedom of design when planning their individual solar and wet weather protection solutions, and in so doing do justice to every conceivable way they might wish to make the most of al fresco living.

Our solution: The markilux project – free-standing awning systems made in Germany.

***markilux***

# Award-winning German Design.

**markilux designer awnings “Made in Germany”** As a family business in the 4th generation we have been manufacturing awnings that set the highest of standards for almost 50 years. What makes markilux unique is the combination of designer quality awnings and the weaving of our awning covers all being done under one roof, which is why we are truly “Made in Germany” right down to the last detail. Our originality shows when it comes to making living outdoors even more enticing. We don’t stop at good solutions; we look to improve on these solutions every day. This allows us to offer the best to our customers in every respect – a perfect combination of form and function.

markilux designer awnings are characterised by quality, multi-award-winning designs and innovative technology and turn your favourite spot to relax into something extra special. You can take our word for it with our markilux quality promise.

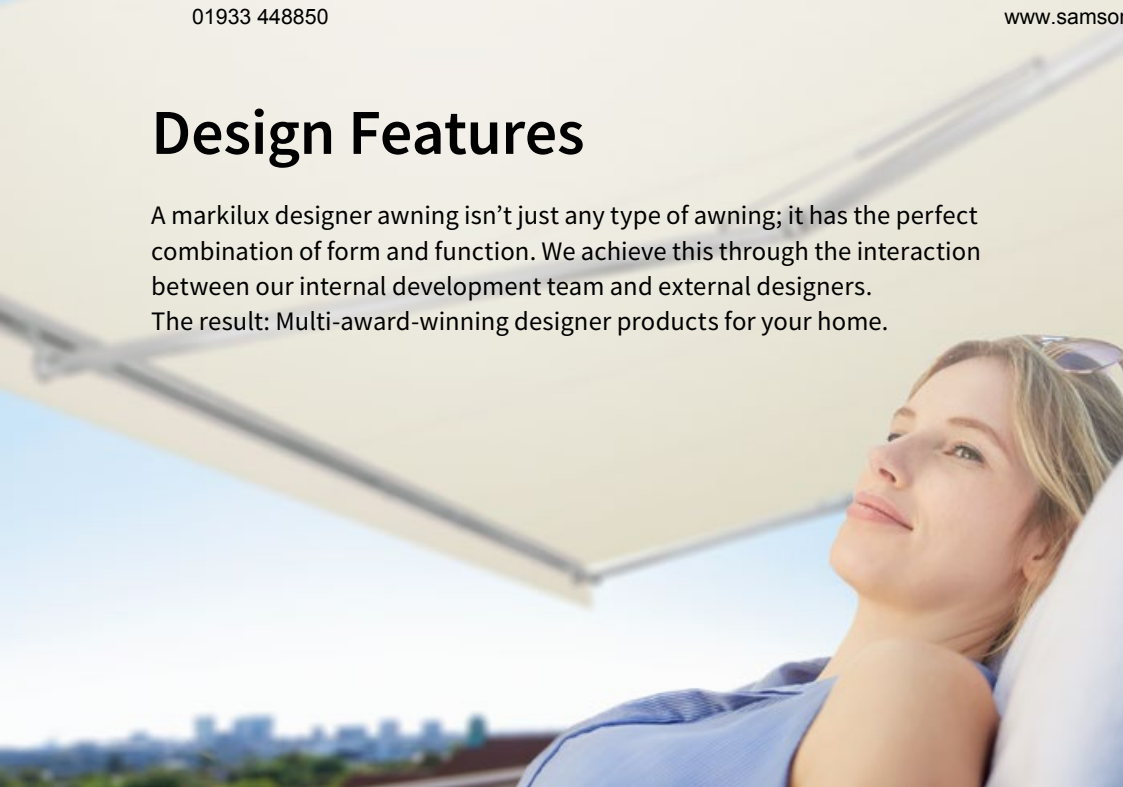
**markilux designer awnings** have received a multitude of awards:





## Design Features

A markilux designer awning isn't just any type of awning; it has the perfect combination of form and function. We achieve this through the interaction between our internal development team and external designers. The result: Multi-award-winning designer products for your home.



## Quality

Every detail is important during the production of our designer awnings. High-grade materials and our comprehensive quality management system ensure that each awning will have an extremely long service life. With this we pursue one objective: The satisfaction of our customers.



## Function

markilux combines innovative technologies and smart solutions with high-end products. With the variety of accessories available, you can enhance your markilux designer awning to suit your own requirements. The wide range of operating options guarantees you the highest degree of comfort.



## Service

Our products, combined with the competent advice of our specialists and their professional installation, make the perfect solution. Our network of qualified specialist retailers guarantees you excellent personal service and that there is always someone at hand to answer any questions you may have.

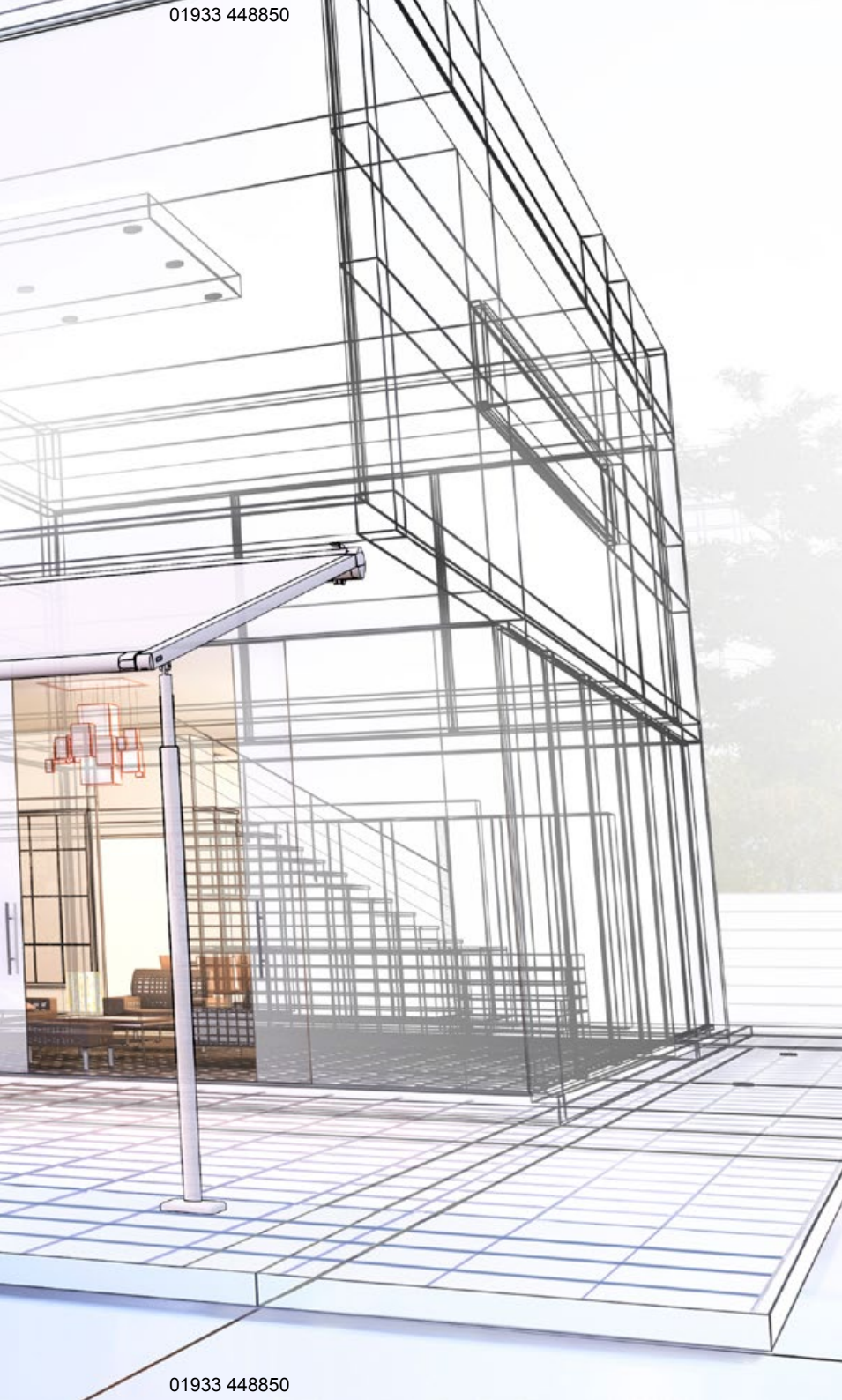








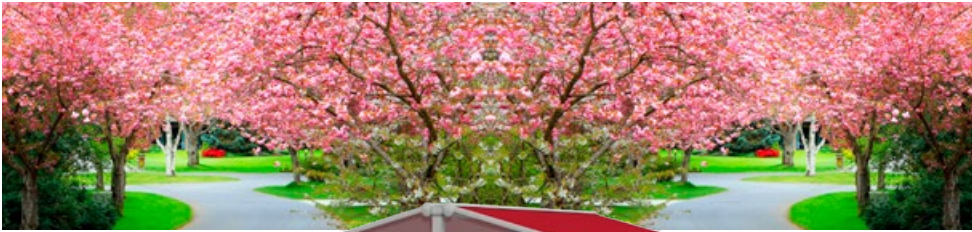
# A good plan. Definitely by markilux.



But an ingenious idea is only as good as its implementation. Therefore, we lend support to our customers right from the initial planning phase of their projects to ensure optimum solar and wet weather protection. We offer expert advice so that together we can work out the ideal solution for them.

For the most beautiful shade in the world – in any size.  
Definitely by markilux.

The most beautiful shade in the world.  
At almost any time. In any size. In any location.

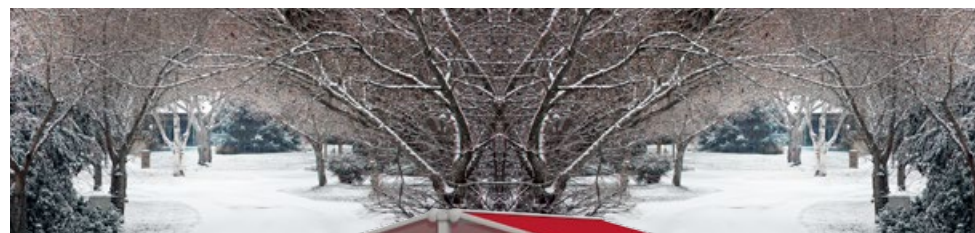


**Spring** Enjoy the first warm rays of sunshine.  
Stay outside – yet still protected.

**Summer** Spend the day outside in the most beautiful shade in the world.  
Under your own personal awning landscape.



**You, too, will be delighted** The numerous markilux options set new standards for the stylish provision of shade in al fresco dining areas. You can find all pertinent information and get competent advice from your markilux specialist partner and at [markilux.com](http://markilux.com)



**Autumn** Extend the summer season. Sit in comfort protected from wind and inclement weather. Outside, the most pleasant place to be.

**Winter** Lighting options and infrared heaters turn night into day and even make your favourite place outdoors attractive in the coldest season of the year.

Weather conditions must be taken into account when operating the awnings.

| 9

# Unlimited room for development, completely flexible and large-scale. markilux awning systems.

**Anticipating the requirements of tomorrow – today** During the design and development of markilux awning systems, we place particular focus on the functionality, flexibility and the quality of the materials and components used. Get to know the diverse range of possibilities available when creating your own ideal solar and wet weather protection system. Select your own ideal space to relax and unwind, completely in accordance with your own personal wishes and requirements. Look forward to real quality time spent in a cosy atmosphere – outside. The open air season has officially been opened. All year round.\*



**markilux markant** Design innovation in technical perfection. The free-standing awning system with integrated solar and rain protection, that can be customised to meet your precise requirements.

Page 12



**markilux construct** Make room for your guests in more ample surroundings. The multi-faceted and flexible sun and wet weather protection solution for the somewhat more discerning taste.

Page 16



**markilux syncra** Developed to last for generations. Made for the outdoor life. Spacious solar protection as either a single or coupled system.

Page 20



# Overview



**markilux pergola** For all those who have big plans, even in windy and inclement weather. The elegant awning system on slender support posts, held firmly in guide tracks at the side.

Page 26



**markilux planet** Runs complete rings around your requirements, and this by up to 335 degrees. A parasol and awning in one. An eye-catcher that gives perfect shade.

Page 32

Awning covers ..... Page 38

Awning frame colours ..... Page 40

Optional accessories ..... Page 42

Gastronomy references ..... Page 44

\* Weather conditions must be taken into account when operating the awnings.

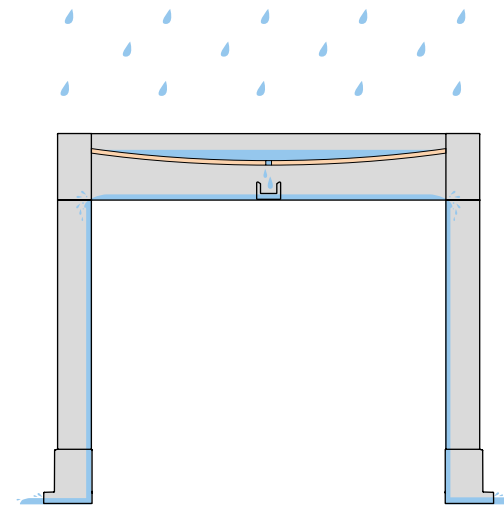
| 11





markilux markant.

Force the rain to make a detour.



Design innovation in technical perfection. The free-standing awning system with integrated solar and rain protection, that can be customised to meet your precise requirements and has a textile touch to it. It provides security, freedom, an aesthetic appearance and comfort in a purist design.

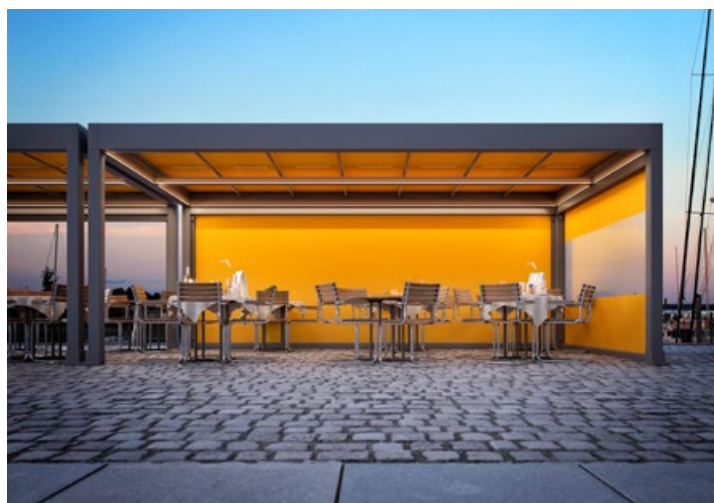
# markilux markant.

## Hospitable. Inviting. Accessible.

**markilux markant** The perfect accessory to make outdoor space more discerning. Our answer to the request to be able to spend as much time as possible outdoors without having to do without weather protection, comfort and a relaxing atmosphere. The innovative addition and upgrade, in particular for al fresco dining. In combination with optional lighting and infrared heaters, the open air season can thus be substantially extended. An increased feeling of well-being. An increased number of guests. Increased profit.



**Attractive ambience** With the markilux markant, outdoor gastronomy is suddenly much more appealing to guests and invites them to stay longer.



**Protected space to relax and unwind in the fresh air** Added value for both guests and gourmets.

**Dimensions** Maximum dimensions 600 cm × 600 cm with two independently functioning awnings, as a single unit up to 300 cm × 600 cm, overall height 260 cm, other heights are possible

**Options** LED lighting, infrared heaters, vertical cassette blinds



**markilux infrared heater** Feel the warmth straight away, and enjoy the evening for longer. Durable, reliable and energy efficient.



**LED lighting** Swivelling and dimmable LED-Spots and LED-Lines are a brilliant "highlight" and transform the space under the awning into an evening oasis of well-being.

**On request – that little bit extra** From appropriate, atmospheric lighting right up to the infrared heater, the markilux markant fulfils all the demands of a contemporary, effective and exclusive outdoor dining experience.









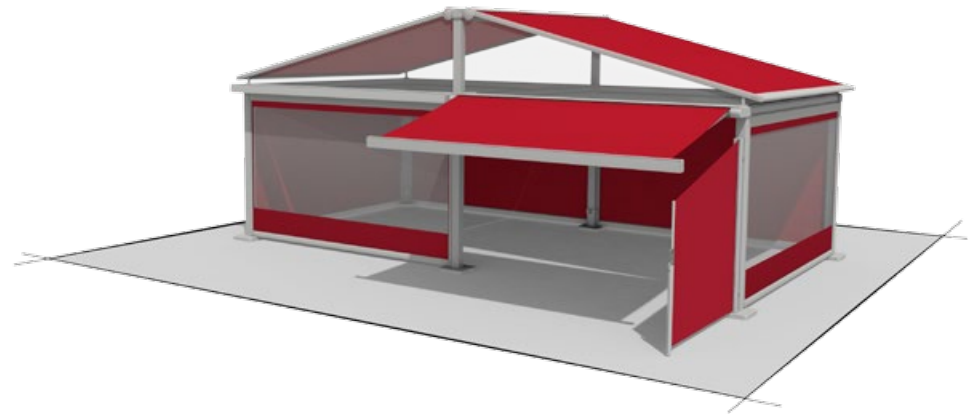




markilux construct.

Space for guests in a new dimension.

Turns visitors into regulars.



This system offers almost unlimited combination possibilities – also thanks to the broad and varied selection of folding-arm awnings and vertical blinds – for the design of a made-to-measure and perfectly adapted space for customers in al fresco dining areas.

# markilux construct.

## When you need just that little bit more.

**markilux construct** There are situations in which a standard solution is not enough to meet your special requirements. In such cases system solutions are required. The highly versatile frame system markilux construct can deal with these out-of-the-ordinary demands quite comfortably. Different modules in combination with different awning models unite to create a veritable awning landscape. You don't have to make any compromises when it comes to size, and the range of available accessories is impressive.

A system developed specifically to meet the broad, divergent requirements of superior outdoor gastronomy. An even greater feeling of well-being for your guests.



### Designer awnings to your own precise specification

Different conservatory and folding-arm awnings are possible and can be combined with vertical blinds or side screens according to your wishes.

**Dimensions** almost unlimited thanks to the modular and flexible frame system

**Options** depending on the awning model, round / square posts, triangular acrylic windows or covers for the gable ends, baseplate covers



Round post

Square post













markilux syncra.

Developed to last for generations.  
Made for the outdoor life.



Stunning. Stable. Sturdy. Spacious solar protection as either a single or coupled system. Use the available space underneath as you see fit – suitable for both private households and business solutions.

# markilux syncra.

## Allow them to stand on their own two feet.

**markilux syncra** The markilux syncra promises generous shading right where you need it. As a single unit up to 60 m<sup>2</sup> and as a coupled unit even larger areas are no problem. This free-standing frame system literally stands on its own two feet, two round or square posts and a massive cross beam ensure reliable stability. Depending on the requirement, one or two folding-arm awnings or markilux pergolas can be attached to it. This awning frame system is either firmly anchored to the ground ("fix") or installed using stabilisation boxes ("flex").

No matter which variant you choose, you can count on the markilux syncra.



**markilux syncra uno** Two feet. One awning. No problem. The markilux syncra uno proves itself a stable base for one "wing".



**markilux syncra pergola** With the additional posts at the front and the lateral cover guidance tracks, this option offers particular advantages in terms of size and wind stability.

**Dimensions** depending on the model up to 60 m<sup>2</sup>, as a coupled unit even larger

**Folding arm** depends on the model

**Options** depending on the awning, syncra uno (only one awning/ pergola), syncra flex (with stabilisation boxes), round / square posts, coupled unit



Round post

Square post







# markilux syncra.

## Movingly fixed.



Stabilisation box with aluminium cover.



Stabilisation box, open at the top for planting.



Footplate for the markilux syncra fix, symmetrical.



Footplate for the markilux syncra fix, asymmetrical, for a support post close to a wall.

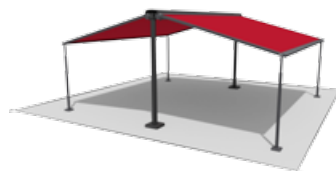
**syncra flex** Stabilisation boxes – if required with cover in wood look – allow installation completely **without** concrete foundations having to be provided by the client.

**syncra fix** Installed **on** concrete foundations to be provided by the client.

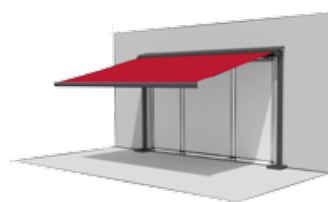




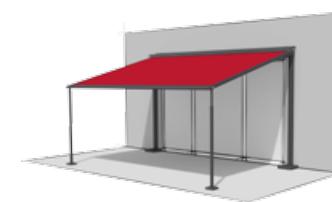
syncra



syncra pergola



syncra uno



syncra uno pergola





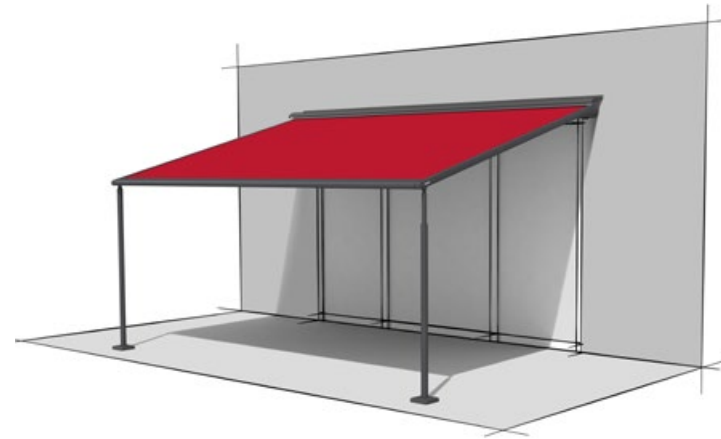




markilux pergola.

Big on size.

And everything fits in.



A new favourite space to do what you like with. The elegant, stylish awning system on slender support posts with guide tracks at the side.







# markilux pergola. Here's to getting together, whatever the weather.

**markilux pergola** The markilux pergola ranks top when it comes to solar and wet weather protection. The awning system on slender posts with lateral guide tracks provides generous shading with an extension of up to 6 metres. The markilux pergola defies wind and weather up to Beaufort 6 (wind resistance class 3). You can make this awning your own with markilux's Shadeplus, an array of lighting options and post variants. No matter how strong the sun shines or the wind blows, with the functional design and the protection of the new markilux pergola, you are always one big step ahead of the weather. And this applies in particular to successful al fresco dining areas. Eye-catching. Large. Hospitable. In all weathers.

**Dimensions** max. 600 cm × 450 cm  
max. 500 cm × 600 cm

**Options** tracfix, Shadeplus and a number of other comfort and design options, see page 30



**Closed full cassette** The cover disappears completely into the cassette and is ideally protected. If anything can be more impressive than the appearance of the awning, it is the way the markilux pergola faultlessly functions.



**markilux sundrive** An integrated solar panel drives the Shadeplus motor (optional). When the awning is extended the front profile and the guide tracks match one another perfectly.

**Coupled unit** For all who want even more shade: Up to five single units can be connected side by side.

**markilux Shadeplus** The additional vertical blind integrated into the front profile simply blocks out low-lying sun and the glances of inquisitive neighbours.



# markilux pergola.

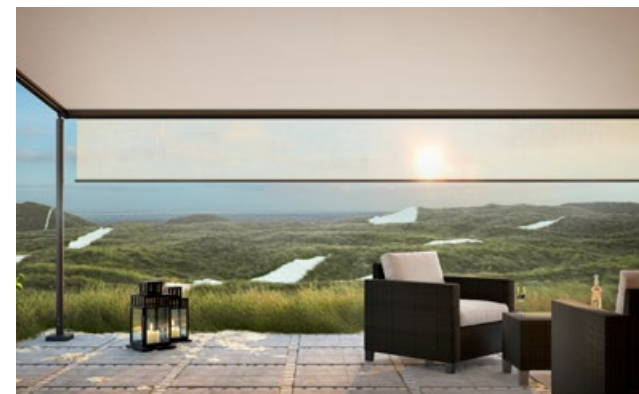
## A clever combination.



**markilux tracfix** One of markilux's many sophisticated features: the lateral cover guidance without a gap between the cover and guide track. Gives a more beautiful overall appearance and better wind stability.



**Adjustable post** Offers better water drainage; the front post of the markilux pergola can be lowered by up to 40 cm in no time at all.



**markilux Shadeplus** The vertical protection against low-lying sun and prying eyes – up to 230 cm in height – creates a private room outdoors with its own special ambience.



**Square support / baseplate covers** meet the demand for clear, angular shapes and a clean finish at the base of the front support posts.



**Stabilisation boxes** Give your markilux pergola reliable stability, when fitting the front posts to foundations is not possible or desired.



**Stainless steel crank** Bring the adjustable posts to the desired height in no time at all.

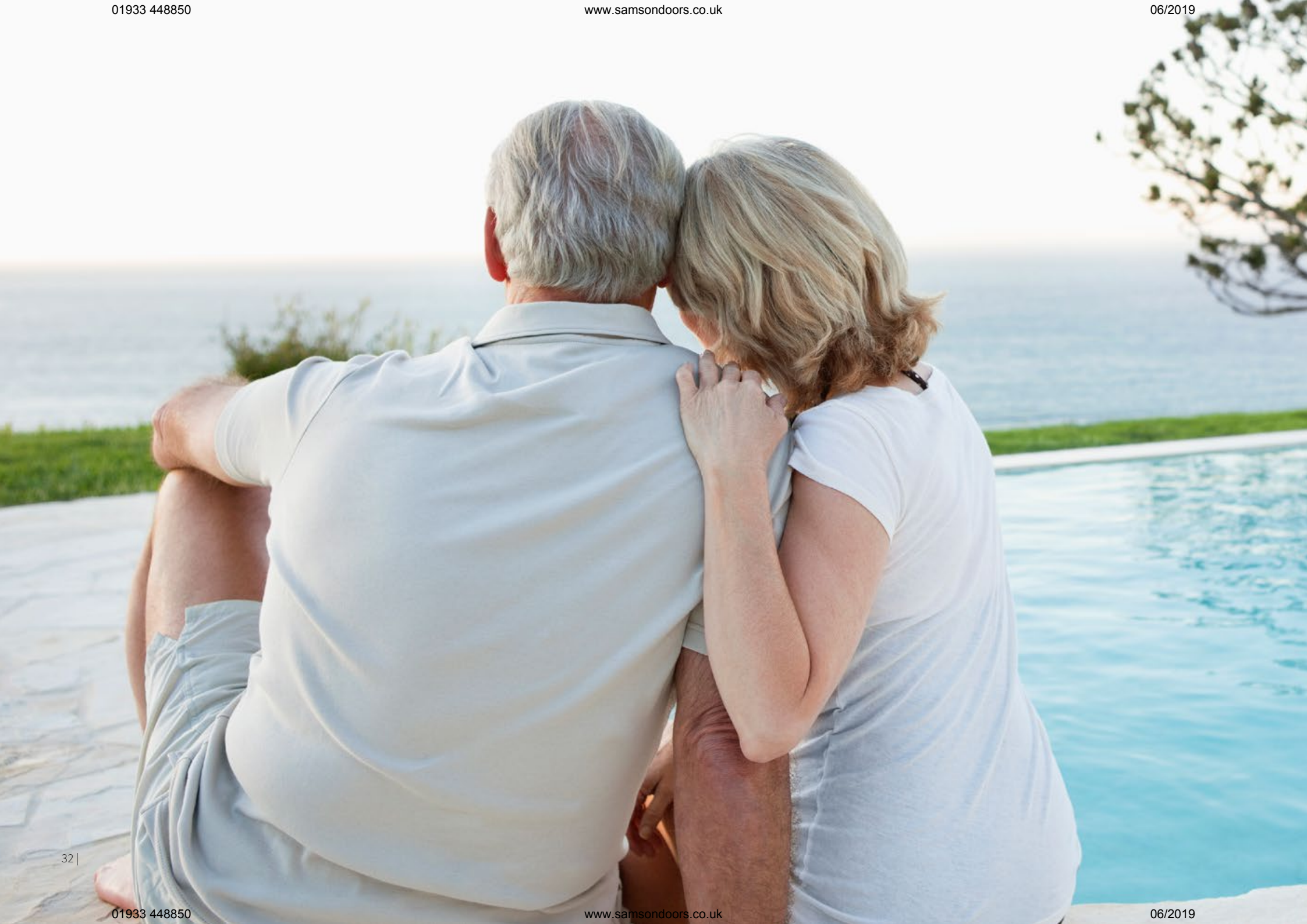


**LED spotlights attached to the cover support tube** These spotlights will provide perfect contrast lighting in the evening hours, can be pivoted and dimmed.







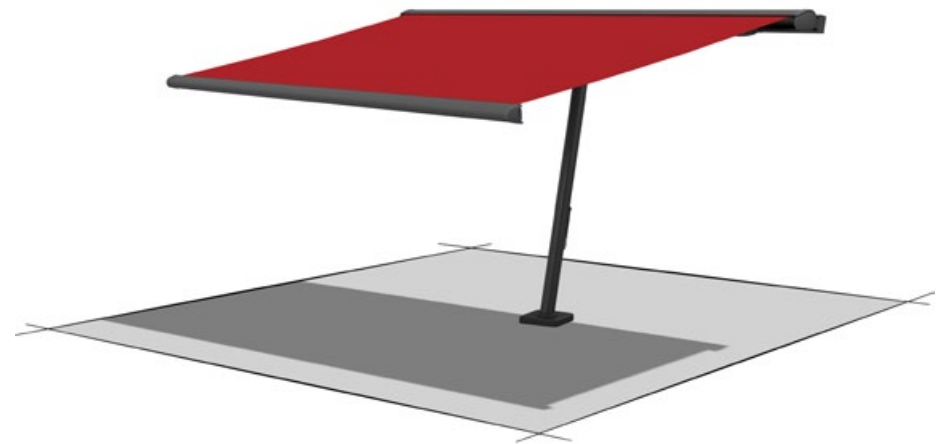






markilux planet.

A dream from every perspective.



Runs complete rings around your requirements, and this by up to 335 degrees.  
A parasol and awning in one. An eye-catcher that gives perfect shade.

# markilux planet.

## The planet really does revolve around you.

**markilux planet** The markilux planet is a parasol and awning in one. It's an eye-catcher that provides perfect shading for your room outdoors. This awning-cum-parasol protects you from solar radiation with exceptional reliability; it's extremely sturdy, yet mobile. With the easy to use lever in the flex variant, you can simply rotate it by up to 335°, so you can have shade wherever it is required. The slim post carries the selected markilux designer awning with ease and the combination of functionality and design is impressive.



**flex option** The markilux planet can be rotated by up to 335° and positioned wherever you need shading. The Easy-go lever allows the markilux planet flex to be rotated, locked in position and unlocked with ease.

**markilux Shadeplus** This versatile protection against low-lying sun, inquisitive glances and glare in the front profile allows you to enjoy the late afternoon sun without having to worry about prying eyes.

**Dimensions** depending on the awning model  
max. 600/610 cm × 300 cm  
max. 500/510 cm × 350 cm

**Folding arm** depends on model

**Options** depending on the awning model, the flex version can be rotated by up to 335 degrees and locked in place in 10 × 30° arcs (300°)













Our customers from the gastronomy sector also like to call them revenue driver systems.



In the following pages you can become acquainted with the various configuration options and solutions suitable for al fresco dining applications now available in the markilux range of awning systems.

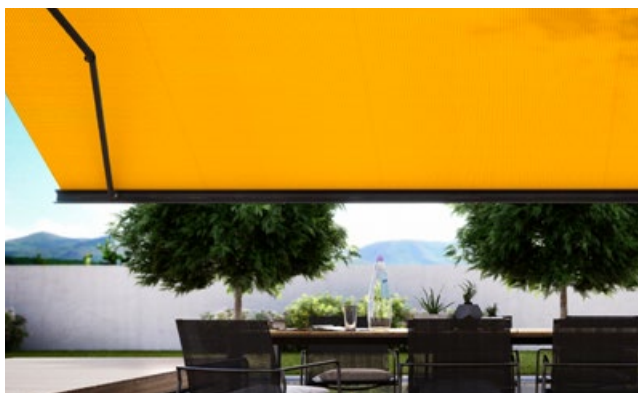
# The most beautiful fabric between heaven and earth. markilux awning covers.

**Awning covers “Made in Germany”** We manufacture awning covers that maintain their shape and colour for years, and offer your home that special something. These high-tech awning fabrics are manufactured at the markilux production facility in Emsdetten, Germany in accordance with strict quality standards. The yarns are dyed using a process we ourselves developed and show their effect in up to 16 million distinctive colours with outstanding luminosity and colour intensity. This has resulted in functional textiles, which have set exceptionally high standards in terms of quality, UV protection, ease of care and appearance. markilux awning covers are available in the qualities “sunsilk” or “sunvas” or as fabrics in our markilux specials collection serving specific requirements.

**sunsilk** Brilliant luminosity. Silky smooth surface. sunsilk awning covers impress with their unique luminosity.

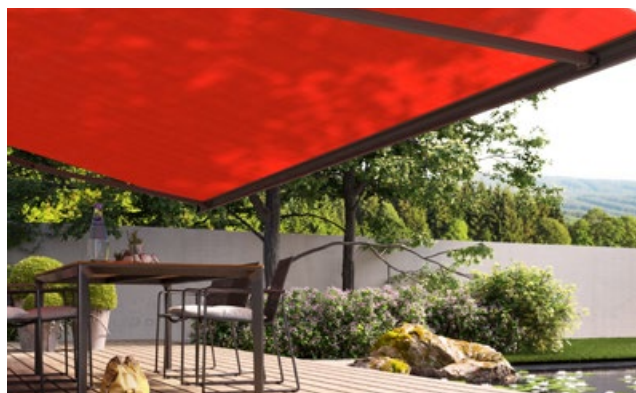
**sunvas** Soft glow. Textile-like to the touch. sunvas awning covers score with their textile character and natural appearance.

## visutex



**markilux visutex collection 50/4/me** Discover the subtle, balanced jacquard effect and powerful colours of the fabrics with this stunningly textured weaving technique. These unique awning fabrics are available exclusively and without any surcharge only from markilux.

## SUNDAY



**markilux sunday collection** Makes every day a Sunday. Choose your personal favourite pattern from seven different colour families – in the proven qualities sunsilk and sunvas.

## specials



**Textiles for special requirements** Semi-transparent, heat-reflecting, permeable, highly water resistant and flame-retardant materials for blinds and awnings extend the range of the overall markilux collection.





**Quality is of prime importance** During the production of our awning fabrics we leave nothing to chance. We produce our fabrics sunsilk and sunvas exclusively in Germany using the most modern weaving technology. We add a final finishing flourish to the fabric using our snc coating, a special formula developed in house that creates a self-cleaning effect. This finish gives our awning covers incredible longevity and resistance against rain, light and fluctuations in temperature. This is certified according to Oeko-Tex standard 100, which also guarantees they are free from harmful dyes or chemicals.

With an Ultraviolet Protection Factor (UPF) of 50+, all markilux awning covers made from sunsilk or sunvas offer the highest possible degree of UV protection. This allows you to enjoy sunny days for longer, without risk.\*

**He who seeks shall find** The most beautiful fabric for your designer awning can be found amongst the 250+ cover patterns at the showroom of your markilux specialist dealer or at [markilux.com](http://markilux.com)



**Self-cleaning snc effect** Water droplets pick up dirt particles and run off the awning cover (the awning must be set at a pitch of at least 14 degrees). This prolongs the attractive appearance of the cover.



**Bonded awning covers** Panel joints bonded together ultrasonically ensure a consistent, unobtrusive appearance. Their excellent resistance to water, light and fluctuations in temperature ensures that the life expectancy of the cover is extended substantially.



**colour on demand** Now you can personally choose your very own favourite colour and create your own unique awning canopy. In cooperation with RAL – the leading specialist in defining colour specifications – we offer you a unique choice of colour. Colour On Demand: 1625 colours. Infinite possibilities.

\* Protect your skin with care! Do not spend longer periods outside without applying sun screen. The UPF afforded by the awning applies only to direct sunlight. It offers no protection against reflected sunlight (e.g. from water).

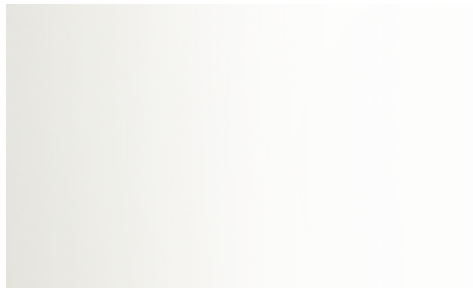






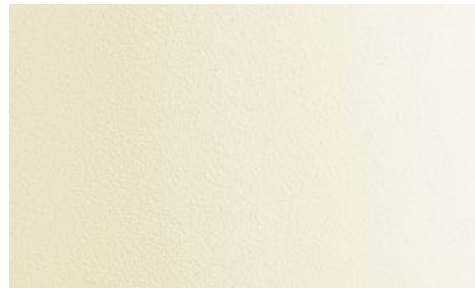
# Turn your imagination into reality with our range of stunning frame colours.

**Choose from our extensive collection of colours** Choose the awning frame colour to complement the colour of the fabric and configure your own amazing design. From a variety of shades of white through to the elegant anthracite finish, a wide range of colours is available to you. Do you want a particular colour scheme? No problem! We will gladly manufacture your dream awning in your own personal shade. Our high-grade powder coating finish is guaranteed for any awning colour you choose.



Traffic white

RAL 9016



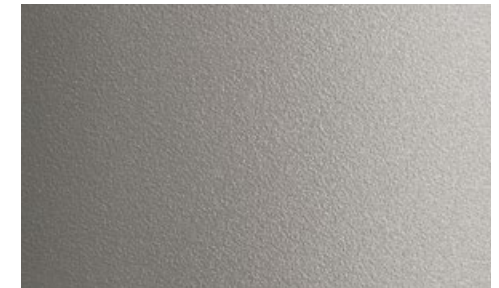
Off-white textured finish

5233



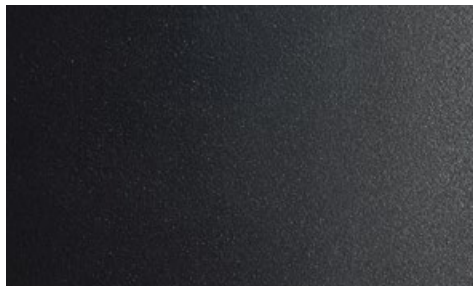
Metallic aluminium

RAL 9006



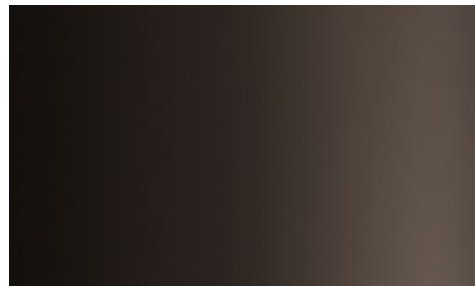
Stone grey metallic

5215



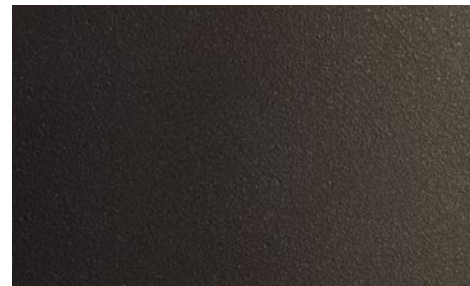
Anthracite metallic

5204



Grey brown

RAL 8019



Havana brown textured finish

5229



RAL colour of your choice

© RAL Bonn 2018

All markilux frame colours are available without surcharge. Other colours from the RAL range can be selected on request.

| 41



# The best option: stay seated.

**Control at the touch of a button, or even automatically** The choice is yours: manual operation (spring-assisted on request), hard-wired motor or radio-controlled motor with remote control, are all possible on most models. You can even operate the system while you are away via smartphone or tablet. Better yet, why not put your feet up and add sun, wind and rain sensors to provide automatic, intelligent control of your markilux designer awning or blind? Your markilux specialist partner is happy to support and advise you with regard to all your queries about the most convenient way to operate markilux awning systems, and is happy to explain to you how you can also set the scene in your al fresco dining area with cosy warmth and the broad range of lighting options.



**Home automation** Easily control your vertical blinds via smartphone or tablet – even when you are away from home. The smart control function with io technology via the app makes it possible.



**markilux radio-controlled motor** Comfortably, at the touch of a button, perfect protection against ultraviolet light, inquisitive glances and the glare of the sun are put at your disposal.



**Intelligent control** With sun, wind and rain sensors, your markilux system can react to any changes in the weather. In sunny conditions your awnings or blinds will extend automatically and in wind and rain they will retract.

**Design your own personal outside** markilux is able to fulfil all the demands made by exclusive al fresco dining. Comprehensive information is available from your markilux specialist dealer and at [markilux.com](http://markilux.com)



**LED lighting** Swivelling and dimmable LED spotlights and LED light strips generate a wonderful evening mood under the awnings.



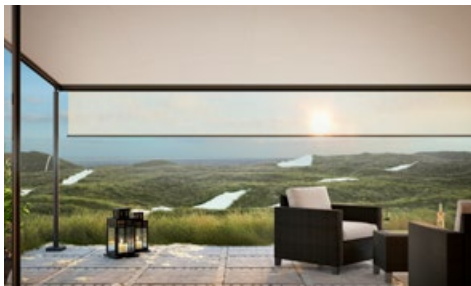
**markilux infrared heater** Feel the warmth in an instant and enjoy the evening outside for even longer. Kept in a protective housing, it is energy efficient and has a long service life. Available in 2000 Watt and 2500 Watt versions, dimmable in three stages.



**markilux LED Spotline** Turn night into day. The elegant light bar in a powder-coated aluminium housing, that can be fitted almost anywhere. The LED spotlights can be tilted and swivelled. Available in two sizes: 180 cm with 3 spotlights and 300 cm with 5 spotlights.



**Coupled systems** Join two or three awning systems together to create an extra-large shaded area.



**markilux shadeplus** Simply shut out the setting sun and prying eyes, and enjoy the warmth of the day for longer.



**markilux panoramic window** Sit outside, protected from wind and inclement weather, but still with a clear view.



**Vertical blinds** Protect yourself against the setting sun, windy, inclement weather and prying eyes.



**Signwriting** Your awning offers an ideal area to place outdoor advertising that can make a big impression – with almost unlimited design possibilities.







# Good views: Creating space in the best location.



**Kirchenwirt** Diersbach / Austria

**Hotel SportSchloss** Velen / Germany



**Cafe Lateral** Madrid / Spain



**Bernay's Gastro GmbH** Cloppenburg / Germany



**carpesol Thermalbad** Bad Rothenfelde / Germany



# Leisure-time atmosphere to order – just in time.



**dii:ke Beach Motel** St. Peter-Ording / Germany



**McDonald's** Great Britain



**Gosch** Sylt / Germany



**Ron Gastrobar** Amsterdam / Netherlands





**Het Badpaviljoen** Domburg / Netherlands



**Allianz Stadion SK Rapid** Vienna / Austria



**Giuseppe's Castello** Pfarrkirchen / Austria



**Billa Corso** Vienna / Austria



Ideas, detailed information, professional advice and all exquisite markilux awning cover patterns can be found in your specialist dealer's showroom and at [markilux.com](http://markilux.com)