

Samson ThermoTeck Speed Insulated Roller Shutter



**EMAIL: ENQUIRIES@SAMSONDOORS.CO.UK
TELEPHONE: (01933) 274276
MON - FRI - 8.30AM - 5.30PM**

Our high-speed-roller door ThermoTeck – simply convincing!



Strong design

- Visually matching the standard roller door
- Up to 10000 mm width and 9 000 mm height feasible
- XXL-doors with centre post enables widths up to 20 m
- Available in standard and preferred colours as well as RAL of your choice
- Wind resistance class up to WK4
- The slats roll up using minimum space due to their special profile



Strong safety

- Internal passage control, secure from weather conditions and vandalism
- Automatic obstacle recognition by integrated light barrier
- Also suitable for outside use as a security shutter



Strong service

- Quick spare parts service
- Direct delivery to the building site



Light curtain – Intelligent fastening

Due to integrated holes in the guiding rail the light curtain can be mounted on the rear side of the guiding rails.

Advantages:

- Good accessibility
- Easy to clean
- Replaceable in the case of emergency
- Protected from soil and dirt

Belt system

The patented and safety-optimised Teckentrup belt system dampens running noise and reduces wear and tear significantly. Durability test with more than 200.000 cycles

With unhook-function:

The belt system unhooks automatically off the fixing unit (injury protection).



INDUSTRIAL | HIGH-SPEED ROLLER DOOR 2.0 ThermoTeck Speed

Please contact our Teckentrup Service under +49 (0) 5246 - 504 333 for any further questions or if you would like to place an order

Industrial roller shutters	
DOOR SIZES	ThermoTeck Speed
Max. width in mm	10 000
Max. height in mm	9 000
Door leaf weight in kg/m ²	app. 11
DOOR CURTAIN, MATERIAL-VERSION	
Steel single-skinned	–
Steel double-skinned	■
Stainless steel	–
Aluminium single-skinned	–
Aluminium double-skinned	–
DOOR LEAF, SURFACE-VERSION	
Steel galvanised	■
Steel coil coated	■
Steel powder coated	▲
Stainless steel	–
Aluminium stucco-embossed	–
Aluminium mill finish	–
Aluminium coil coated	–
Aluminium powder coated	–
Side door visually matching the door leaf	▲
GLAZINGS	
Rectangular window	▲
SEALS	
Top seal	■
Bottom seal	■
SAFETY-EQUIPMENT	
Anti-drop device	■
Safety edge	▲
Roll-up safety	▲
DRIVE	
Direct drive	■
INSTALLATION IN	
Concrete, steel, masonry	■
Further on request	▲

■ = Standard ▲ = Optional

WE ARE HAPPY TO ADVISE YOU.

INDUSTRIAL | HIGH-SPEED ROLLER DOOR 2.0 ThermoTeck Speed

THE HIGH-SPEED ROLLER DOOR 2.0 ThermoTeck Speed

Fast. Installation-friendly.

Reliable.

Your advantages

- ✓ Fast running speed
- ✓ Very low wear and tear
- ✓ Reasonable cost/
benefit ratio

INDUSTRIAL | HIGH-SPEED ROLLER DOOR 2.0 ThermoTeck Speed

Opens fast, closes fast: Saves energy on the double.

Count on energy efficiency and profitability with our new high-speed roller door.

Because of the high continuous operational standards and a robust design the HRD* meets necessary requirements for all application situations - in particular also suitable for outside use. With high running speed of up to 1,5 metres per second our high-speed roller door ensures a high level of energy efficiency due to minimal heat loss. Minimising the time a door stays open means less heat loss during the door movement phase. This pays off especially for high usage doors.

Furthermore this door combines effective sound insulation , a high-level of assembly-friendliness and extraordinary low wear and tear characteristics which lead to a good cost/benefit ratio.

Our efficient high-speed roller door Thermo Teck Speed - Look and see on **www.teckentrup.biz**.

* High-speed roller door

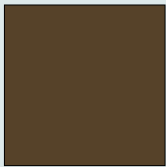
Exactly to your taste: Discover our range of designs

Choose from our ThermoTeck modules:

- Heat-insulated with micro-profiled surface
- Reliable, extremely robust and optically appealing
- Available with glazing or ventilation grille



Standard Colours



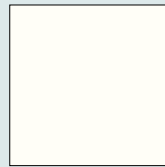
Sepia brown
(RAL 8014)



Grey white
(RAL 9002)



White aluminium
(RAL 9006)



Traffic white
(RAL 9016)

Preferred colours



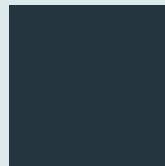
Fire red
(RAL 3000)



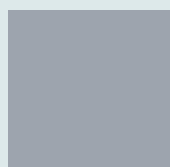
Gentian blue
(RAL 5010)



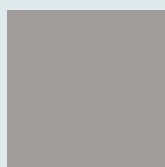
Moss green
(RAL 6005)



Anthracite grey
(RAL 7016)



Window grey
(RAL 7040)



Grey aluminium
(RAL 9007)

Find the right colour shade:

- Standard: galvanised surface with transparent protective paint
- Coil-coated: six preferred and four standard colours
- Powder-coated: individual colour design
- Individual colour design for manifold door designs matching any facade by RAL of your choice



ROBUST IN CONTINUOUS USE.
OUR HIGH-SPEED ROLLER DOOR
THERMOTECK SPEED
OPTIMISES WORK PROCESSES
AND PROVIDES MORE
ENERGY EFFICIENCY.

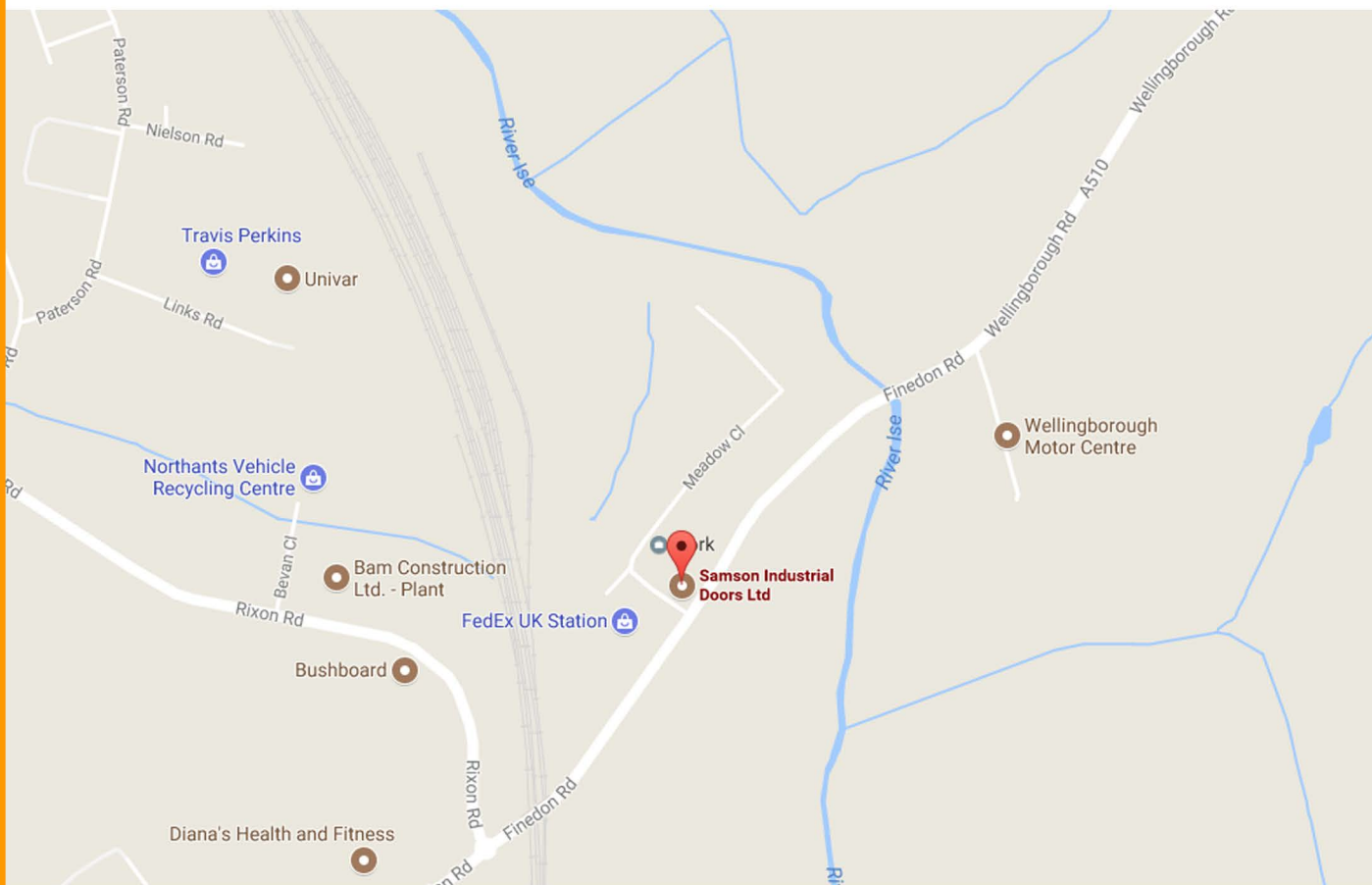
(Ekkehard Grohs, research and development department, Teckentrup)

Your advantages:

- Expanded product range: High-speed roller doors exploits new building types, e.g. logistic warehouses or highly-frequented industrial buildings
- Assembly-friendliness: Installation just as easy as for the standard roller door
- The construction principle proven for many years ensures highest quality – with many components tried and tested for 15 years and only a few new additional components like the belt system and light curtain
- Diverse installation options:
 - Wood (minimum 240 mm)
 - Aerated concrete with steel frame (minimum 200 mm)
 - Masonry (minimum 120 mm)
 - Concrete (minimum 100 mm)
 - Steel



Samson



**6-8 MEADOW CLOSE
ISE VALLEY INDUSTRIAL ESTATE
FINEDON ROAD
WELLINGBOROUGH
NN8 4BH**

**EMAIL: ENQUIRIES@SAMSONDOORS.CO.UK
TELEPHONE: (01933) 274276
MON - FRI - 8.30AM - 5.30PM**