



Insulated Roller Garage Doors.

Choosing a product for your home as important as a garage door is not something you do very often. Perhaps only once or twice in a lifetime! Samson insulated roller garage doors are quality assured, built to last and packed full of clever features...

Why Choose a Samson Roller Door?



Convenient electric operation

with a powerful yet quiet motor concealed within the barrel and a manual override that keeps your door operational in case of power failure.



Weather proof

design with insulated slats, helps keep the weather out (and keeps the heat in) so your garage is no longer a draughty no-go area.



They are covered by fair warranties

SRD roller doors are covered by a comprehensive warranty of two years.



They are quality assured & safe

Every door is manufactured to our ISO 9001 certified quality systems and UKCA marked and safety compliant.



They take up less space

than any other garage door, rolling up into a compact space with no tracks projecting into the garage.



Make extra space

by fitting behind the opening, giving you a wider and taller opening. Vertical opening means the door doesn't project out onto your drive or into the garage space, allowing you to park up to the door inside and out.



They look simply stunning

The gentle curve and the subtle lines of each slat are finished in a tough polyester powder coating to create an overall look that is classic and contemporary in equal measure.



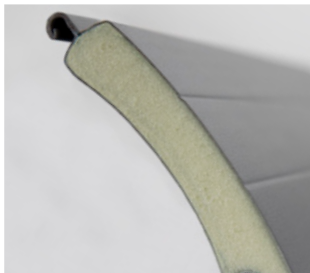
SRD77

SRD55

Because it rolls 'tighter' than other roller doors, Samson roller garage doors take up less headroom when open - just 300mm for the SRD 77 and only 205mm for the SRD 55, thanks to its smaller slats. It's the ideal choice when headroom is especially limited.



Features



CFC-free foam within the aluminium lath provides thermal and acoustic insulation.



A choice of corrosion-resistant curtain colours, for a durable finish that lasts.



Heavy duty extruded aluminium guides secure the door at the sides.



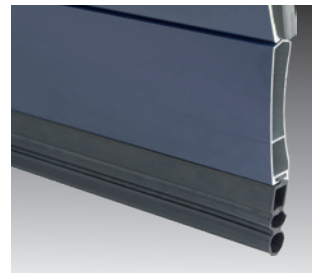
The frame is supplied in white, black or anthracite as standard, for a sleek and stylish look.



Brush strips reduce draughts and the bottom seal keeps out wind blown debris.



Extra drive through width of up to 150mm helps keep your wing mirrors unmarked!



The extruded aluminium bottom slat adds extra strength to resist forced entry.



Aluminium end plates with no through-fixings give the door a neat and tidy finish.



The GDO 77 is supplied without a roll box but an optional half or full box is available.



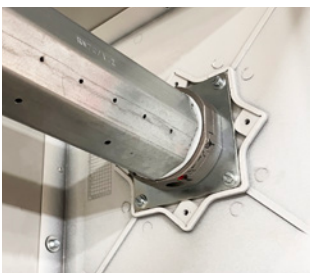
The half box option prevents debris dropping onto the roll - supplied as standard on the SRD 55.



The full box option encloses the door roll for a very neat installation.



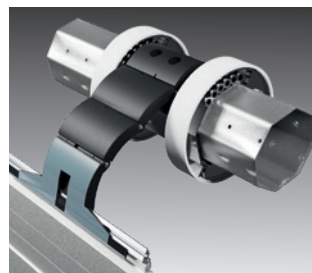
Emergency override means the door can be operated in the event of power failure.



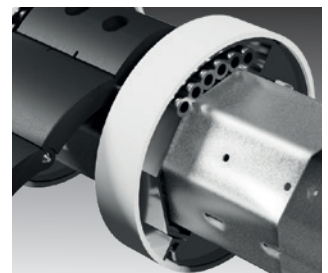
The powerful and quiet concealed motor drives the door and holds it locked when closed.



Where applicable, the SRD 77 safety brake prevents the door from dropping in the unlikely event of a motor failure.



Strong locking straps prevent forced lifting of the door.



Padded collars ensure smooth and quiet operation.



Remote Control.

Remote control makes using your door effortless and secure. No need to get out of your car on a wet and windy night! With two handsets supplied with every Samson Remote Controlled door, garage door access has never been so easy and affordable.

All Samson Remote Controlled Garage Doors come with:

- A wired control unit
- 2 keyfob hand transmitters
- Optical safety edge
- Anti-entrapment technology built-in

Teleco Simple Control Unit

The Teleco Simple wired control unit makes operating your door easy and safe. Featuring push buttons to operate the door, an auto time close function and the option to set-up a safety edge exclusion zone 50mm from the floor, ensuring full closure each time, even on uneven surfaces.



Safety Edge

Peace of mind protection for you and your family. The doors' bottom edge rubber seal incorporates an optical sensor along its length to detect obstructions and instantly stop and reverse the door a short distance when closing.



TELECO
AUTOMATION



Switch Operated

Our best value garage door

If you don't use your garage door very often or your garage is mainly accessed via an internal door, our Switch Operated roller garage door is the ideal budget-friendly choice.

With an indoor hold to run control, simply press and hold one button to open the door and hold one button to close. For easy access from outside the garage, opt for an outdoor key switch instead.

Or enjoy the convenience of both indoor and outdoor control by combining the Genesis control box with an external key switch.



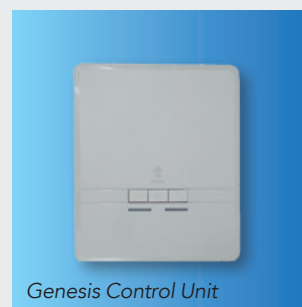
Indoor Rocker Switch



Outdoor Key Switch

It must only be possible to operate the hold-to-run control in direct sight of the door.

Door Hardware Federation

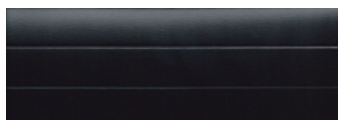


Genesis Control Unit

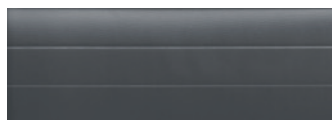
Standard Colours



White RAL 9016

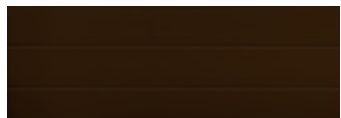


Black RAL 9005



Anthracite RAL 7016

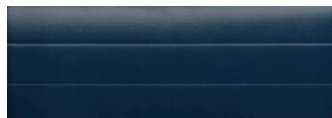
Premium Colours (surcharge applies)



Brown RAL 8014



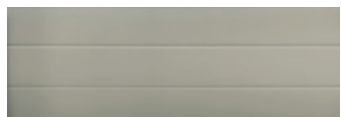
Chartwell Green



Navy Blue RAL 5011



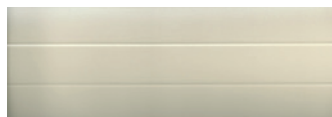
Burgundy RAL 3004



Light Beige BS 08B17



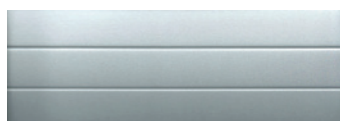
Fir Green RAL 6009



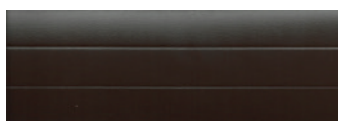
Ivory RAL 1015



Agate Grey RAL 7038



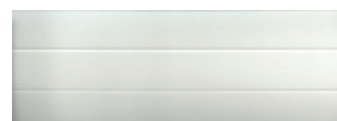
Silver Metallic RAL 9006



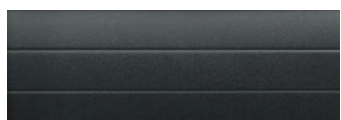
Dark Brown RAL 8019



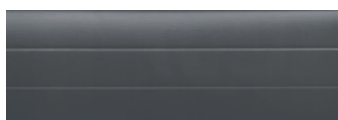
Moss Green RAL 6005



Cream White RAL 9001



Graphite*



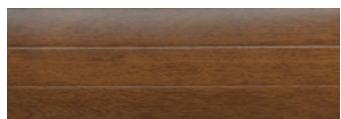
Slate Grey RAL 7015*



Duck Egg Blue*



Irish Oak*

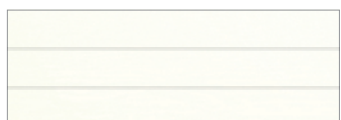


Golden Oak*

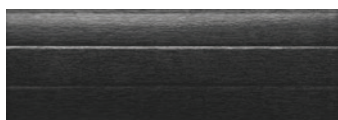


Rosewood*

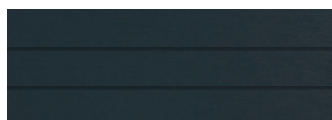
Woodgrain Laminates (surcharge applies)



White Laminate*



Black Laminate*



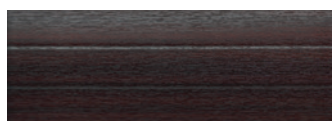
Anthracite Laminate*



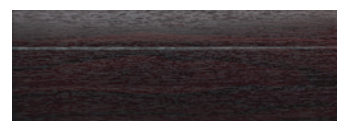
Irish Oak Laminate*



Golden Oak Laminate



Mahogany Laminate



Rosewood Laminate

*Only available on SRD 77

Options & Accessories



Exterior release

For use in emergencies or in the event of power failure. Allows the door to be opened manually from outside the garage - essential if the garage has no other entry point. Can be fitted through the wall or the guide if the door is fitted within the opening.



Lockable override cover

A lockable cover to protect the manual override access point on externally fitted doors.