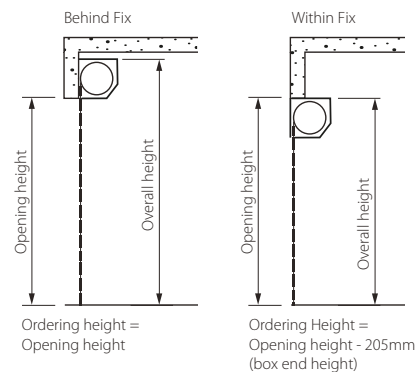
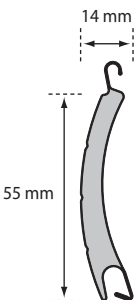


Ordering Size

Ordering size is the over guide width (OGW) x guide height (GH).
Doors have 66mm wide guides
Clear opening width = ordering size - 132mm
Clear opening height = guide height - 80mm
(to allow for the bottom slat hang-down into the guide)

Slat Profile

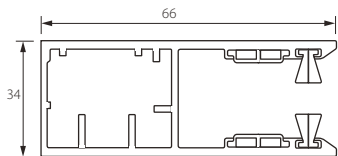


Fixing Options

Doors can be fitted within or behind the opening. Suitable clearance must be available for the door guides and box ends. Doors fitting within the reveal must have the box end height (205mm) deducted from the opening height to calculate the guide height (GH).

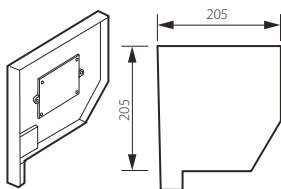
Door Guides

Door guides are 66mm wide and 34mm deep.



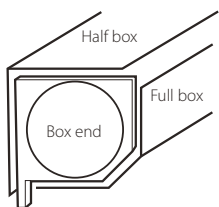
Box Ends

The box ends, to which the door mechanism is attached, fit at the top of the guides and are 205mm high and 205mm deep. The overall height of the door is the guide height (GH) + 205mm (box end height).



Door Box Options

The box ends are supplied with a half box (90° section) to partially enclose the door mechanism. An optional full box (90° section + 90° section with 45° return) to fully enclose the door mechanism is available.



Control Options

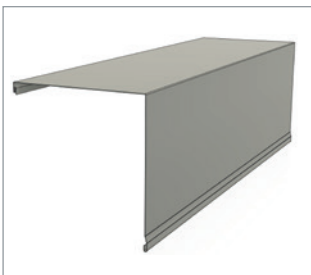
The door is supplied with an indoor hold-to-run rocker switch as standard. An optional outdoor key switch, Genesis control unit or Teleco Simple control unit are available. The Teleco Simple is supplied with 2 keyfob hand transmitters and a wired safety edge.



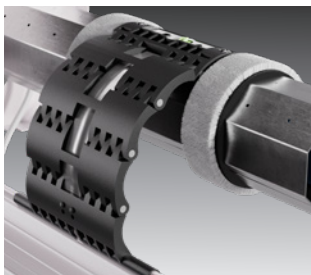
Indoor Rocker Switch



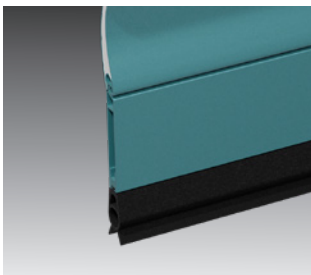
TELECO
AUTOMATION



The door is supplied with a half box as standard. Full box option available.



Strong locking straps prevent forced lifting of the door.



The extruded aluminium bottom slat adds extra strength to resist forced entry.



Emergency override means the door can be operated in the event of power failure.

SIZE RANGE

Doors are available made to measure across the size bands shown:

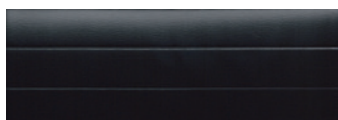
	Over Guide Width (66 mm Guides)				
Guide Height	2000	2250	2500	2750	3000
2000					
2150					

COLOURS

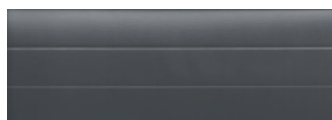
Standard Colours



White RAL 9016

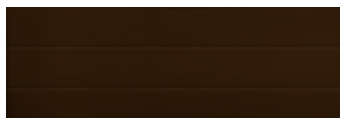


Black RAL 9005



Anthracite RAL 7016

Premium Colours (surcharge applies)



Brown RAL 8014



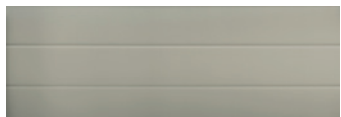
Chartwell Green



Navy Blue RAL 5011



Burgundy RAL 3004



Light Beige BS 08B17



Fir Green RAL 6009



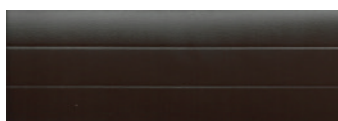
Ivory RAL 1015



Agate Grey RAL 7038



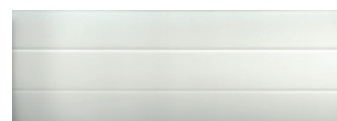
Silver Metallic RAL 9006



Dark Brown RAL 8019



Moss Green RAL 6005



Cream White RAL 9001