

# **Samson ThermoTeck Insulated Roller Shutter**



**EMAIL: [ENQUIRIES@SAMSONDOORS.CO.UK](mailto:ENQUIRIES@SAMSONDOORS.CO.UK)  
TELEPHONE: (01933) 274276  
MON - FRI - 8.30AM - 5.30PM**

# Roller shutter ThermoTeck

Galvanized steel profiles, double-skinned

## Text example

Compile and tender according to requirements.

Please refer to technical data below for respective details.

Updated 1<sup>st</sup> June 2015

position	No. of pieces	item	unit price €	total price €
		Roller shutter, double-skinned, insulated, made of steel profiles, galvanized consoles. Resistance to wind load in accordance with EN 12424 class 2. With header seal and prime coated winding shaft.		
		<b>Make:</b> Teckentrup or equivalent. Roller shutter Thermo Teck, steel, double-skinned. <b>Drive:</b> Direct mount drive 400 V (three-phase voltage), IP54, emergency crank handle, intergr. Anti-drop device, TÜV tested, maintenance-free, 60% ED. <b>Control:</b> Basic version, control voltage 24 V (safety low volt.), degree of protection IP65, "close door" in deadman mode (permanent pressure), with push buttons "open-stop-close", fully wired ready for use and with CEE plug. <b>Installation:</b> Behind the opening, on concrete, all fastening elements, suitable for structure material, are supplied. <b>Ordering dimensions:</b> ordering dimensions ___mm wide and ___mm high. wall and header thickness (concrete ___mm / masonry ___mm), headroom ___mm, sideroom right-hand ___mm, left-hand ___mm. <b>Ordering details:</b>		

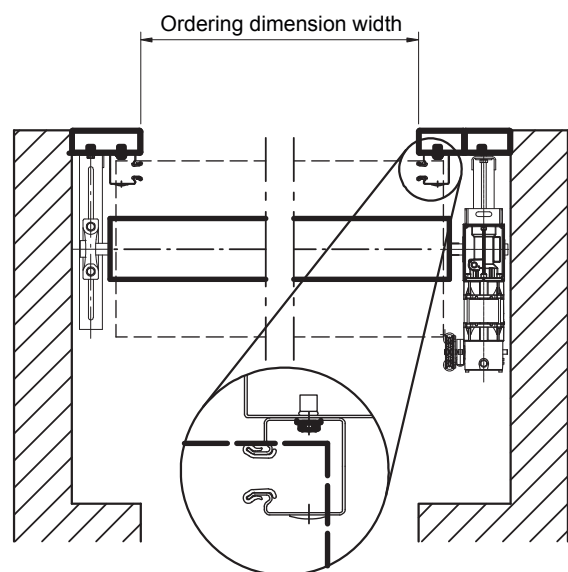
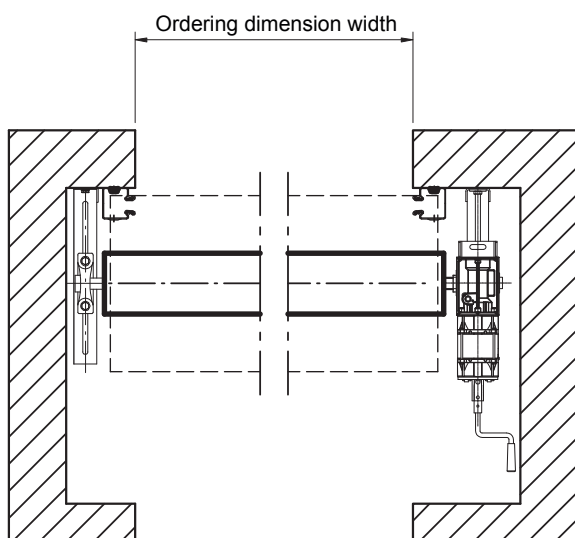
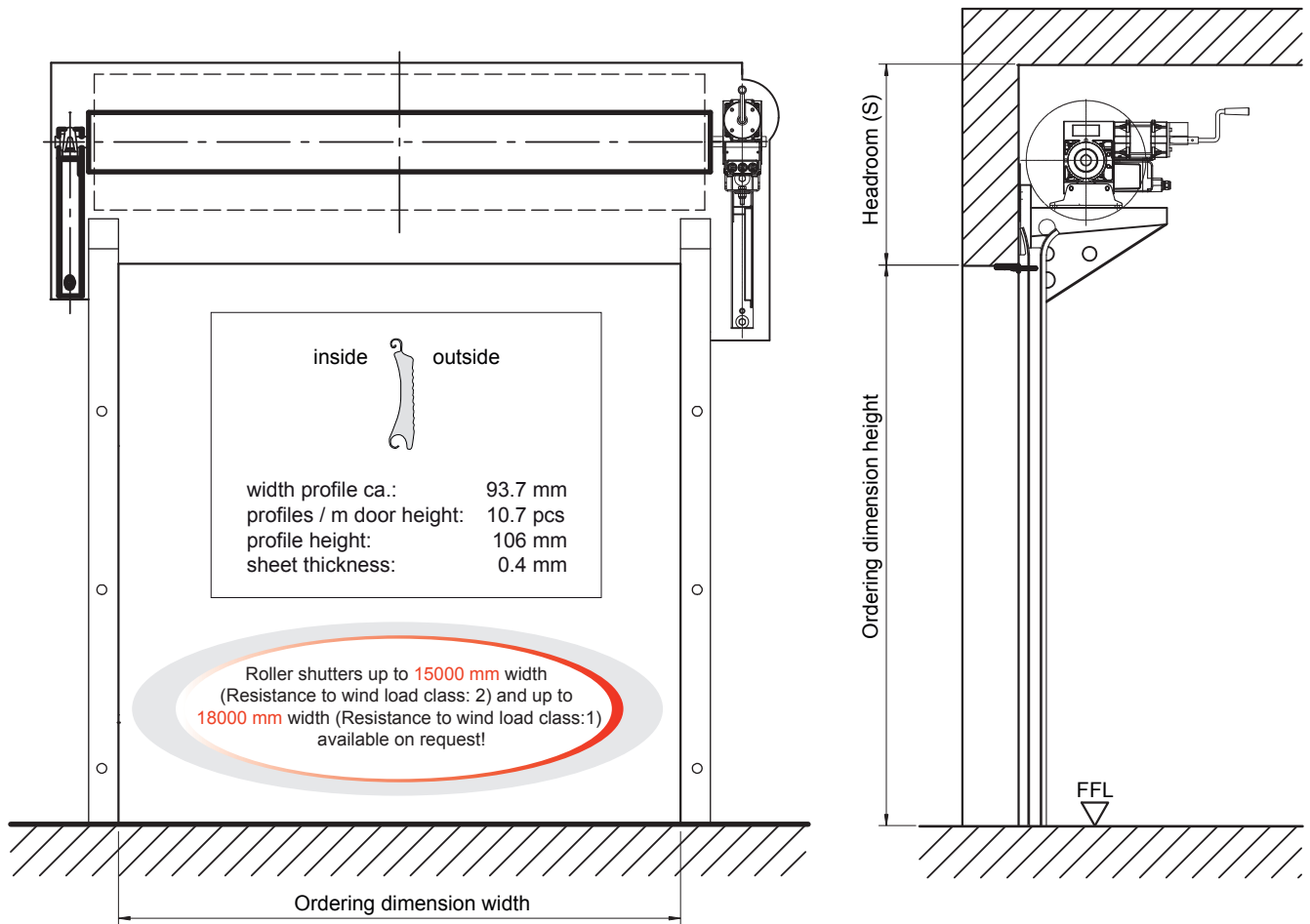
## Technical Data

<b>Product:</b> Profiles made of galvanized steel, double-skinned <ul style="list-style-type: none"> <li><b>Heat insulation:</b> U-value tested in acc. with EN ISO 12567-1 (for dim. = 4000 x 4000 mm) U W/m<sup>2</sup>k (complete door): 3.5 W/m<sup>2</sup>k</li> <li><b>Sound insulation:</b> RW (tested) 20 dB</li> <li><b>Air permeability:</b> classification in acc. with EN 12426 class: 0</li> <li><b>Resistance to wind load (R<sub>wtl</sub>):</b> classification in acc. with EN 12424 class: 2</li> <li><b>Resistance to water penetration:</b> tested in acc. with EN 12489, classification in acc. with EN 12425 class: 0</li> </ul>	<b>Header seal:</b> As standard, except for doors with ventilation grilles, louvers or other types of ventilation.
<b>Installation in:</b> Walls made of: <ul style="list-style-type: none"> <li>masonry mind. 120 mm</li> <li>concrete mind. 150 mm</li> <li>steel</li> <li>autoclaved aerated concrete mind. 200 mm only with steel frame</li> <li>wood mind. 240 mm</li> </ul>	<b>Consoles:</b> Made of galvanized steel. If desired, with sound insulation in acc. with DIN 4109.
<b>Dimensions:</b> Ordering dimensions width: 1000 – 11500 mm height: 1000 – 12000 mm roller shutters up to <b>15000 mm width</b> (wind load class: 2) and up to <b>18000 mm width</b> (wind load class: 1) available on request!	<b>Locking:</b> All locks connected to door control unit via safety switches. <ul style="list-style-type: none"> <li>Bottom profile lockable from inside via two locking rods with profile cylinder.</li> <li>Bottom profile lockable from inside and outside via two locking rods with profile cylinder.</li> <li>Sliding bolt on the inside</li> <li>Other types of locking mechanism on request.</li> </ul>
<b>Door curtain:</b> Door curtain, consisting of hinge-like interconnected galvanized steel.	<b>Drive:</b> Direct mount drive with integrated anti-drop device Or chain drive with separate anti-drop device and electric forced disconnection, (three-phase volt.) 400V, 50Hz, 60%ED, degree of protection IP54, with emergency crank handle (TÜV tested and maintenance-free). Other special voltages, degrees of protection, or types of emergency operation available on request.
<b>Profiles:</b> <ul style="list-style-type: none"> <li>double-skinned steel, 93.7 mm wide</li> </ul>	<b>Control:</b> For direct mount and chain drives, fully wired ready for use and with CEE plug. Basic version can be locked and used as a deadman control, can be easily retrofitted with: <ul style="list-style-type: none"> <li>Self-locking "CLOSE" in con. with safety edge device.</li> <li>Radio control</li> <li>Auto. closing (with traffic lights) accessories for control units</li> <li>Traffic light control/two way traffic</li> <li>digital induction loop.</li> </ul> without safety edge mechanism: Basic version 24V control voltage (safety low volt.) degree of protect. IP65, "close door" in deadman mode (permanent pressure), push buttons "open-stop-close" With safety edge mechanism: With self-monitoring, electro-mechanical safety edge mechanism, safety-low voltage 24V, IP 65, "close door" and "open door" in self-locking mode with push buttons "open-stop-close".
<b>Surface:</b> <ul style="list-style-type: none"> <li>galvanized steel.</li> <li>coil-coated steel</li> </ul>	<b>Special equipment:</b> Permanent side part with integrated door pivoted side part with integrated door curtain box made of: <ul style="list-style-type: none"> <li>galvanized sheet steel</li> <li>natural aluminium</li> <li>Other versions on request</li> </ul> Sloping bottom profile, aligned to the floor, for side or roof installation.
<b>Glazing</b> <ul style="list-style-type: none"> <li>ThermoTeck synthetic glazing, crystal clear approx. 150 mm x 55 mm</li> </ul>	
<b>Bottom seal:</b> Double-skinned box profile made of aluminium with permanently elastic and frost-proof EPDM profile hose seal for a sealed bottom door edge.	
<b>End caps:</b> Robust, wear and corrosion-free plastic parts for fixing the profiles.	
<b>Wind hooks:</b> For high wind loads and/or large widths the doors are equipped with wind hooks and a reinforced bottom seal.	
<b>Guide rails:</b> Robust, steel profiles with wear-proof, easy-to-change plastic guides.	
<b>Winding shaft:</b> Prime coated steel tube with welded-in shafts on both sides for drive, anti-drop or bearing seat.	

Subject to technical changes.

# Roller shutter ThermoTeck

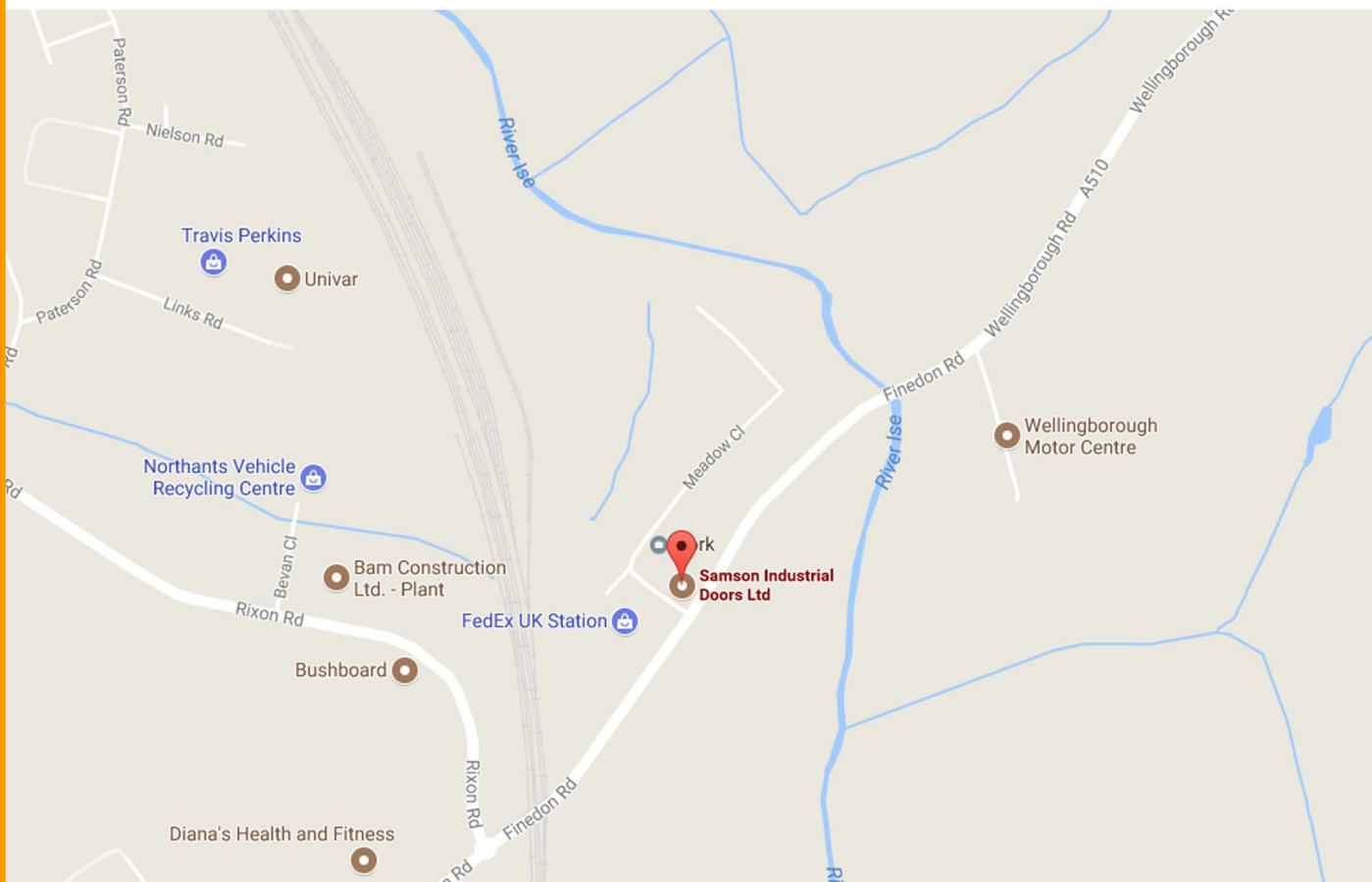
Galvanized steel profiles, double-skinned



#### Further documents:

The exact dimensions for the lateral buffers and the header buffer can be found in our Installation data for roller shutter grilles.  
assembly drawings for each shutter.  
Please contact us for exceptional handling.

# Samson



**6-8 MEADOW CLOSE  
ISE VALLEY INDUSTRIAL ESTATE  
FINEDON ROAD  
WELLINGBOROUGH  
NN8 4BH**

**EMAIL: ENQUIRIES@SAMSONDOORS.CO.UK  
TELEPHONE: (01933) 274276  
MON - FRI - 8.30AM - 5.30PM**