

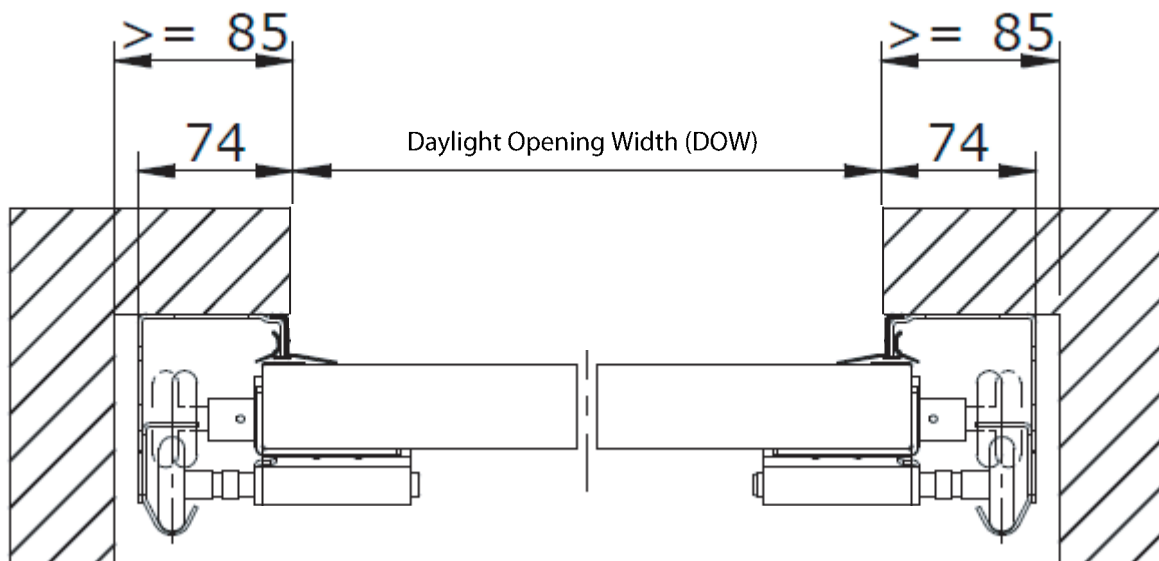
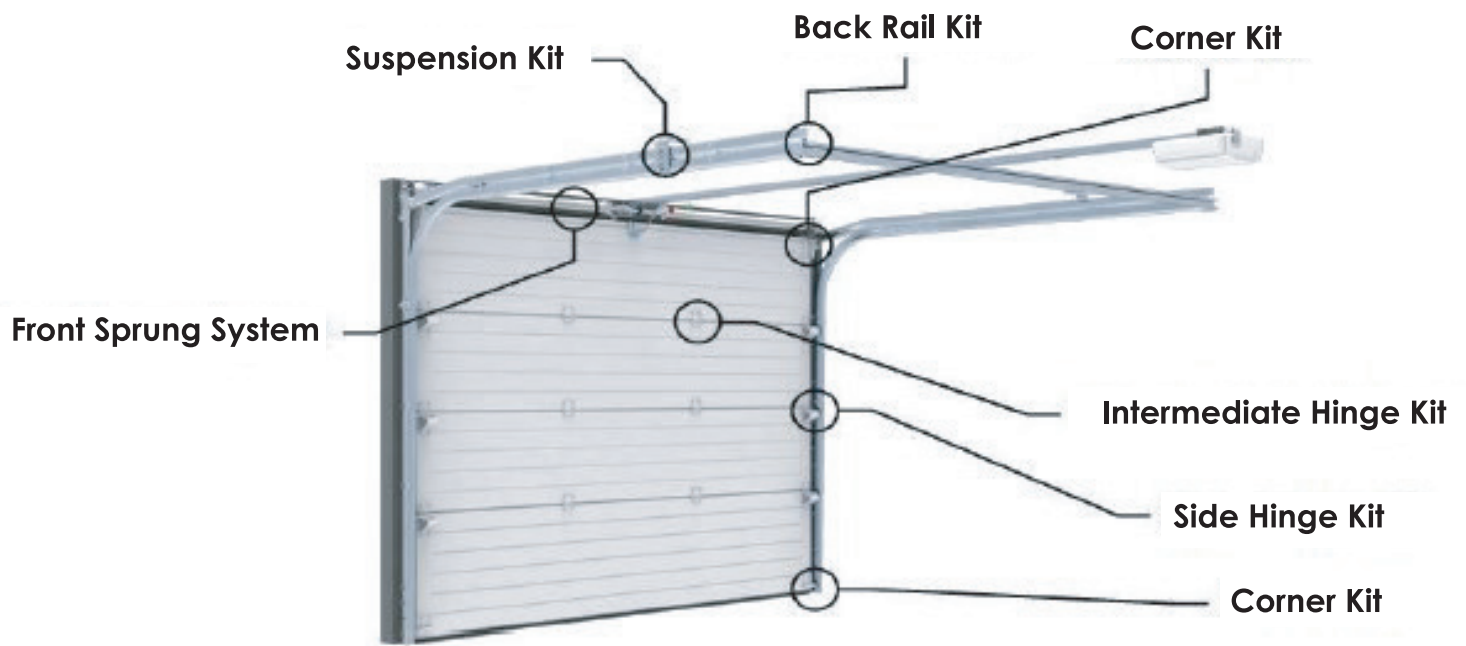




SeceuroGlide Sectional Plus Fitting Instructions

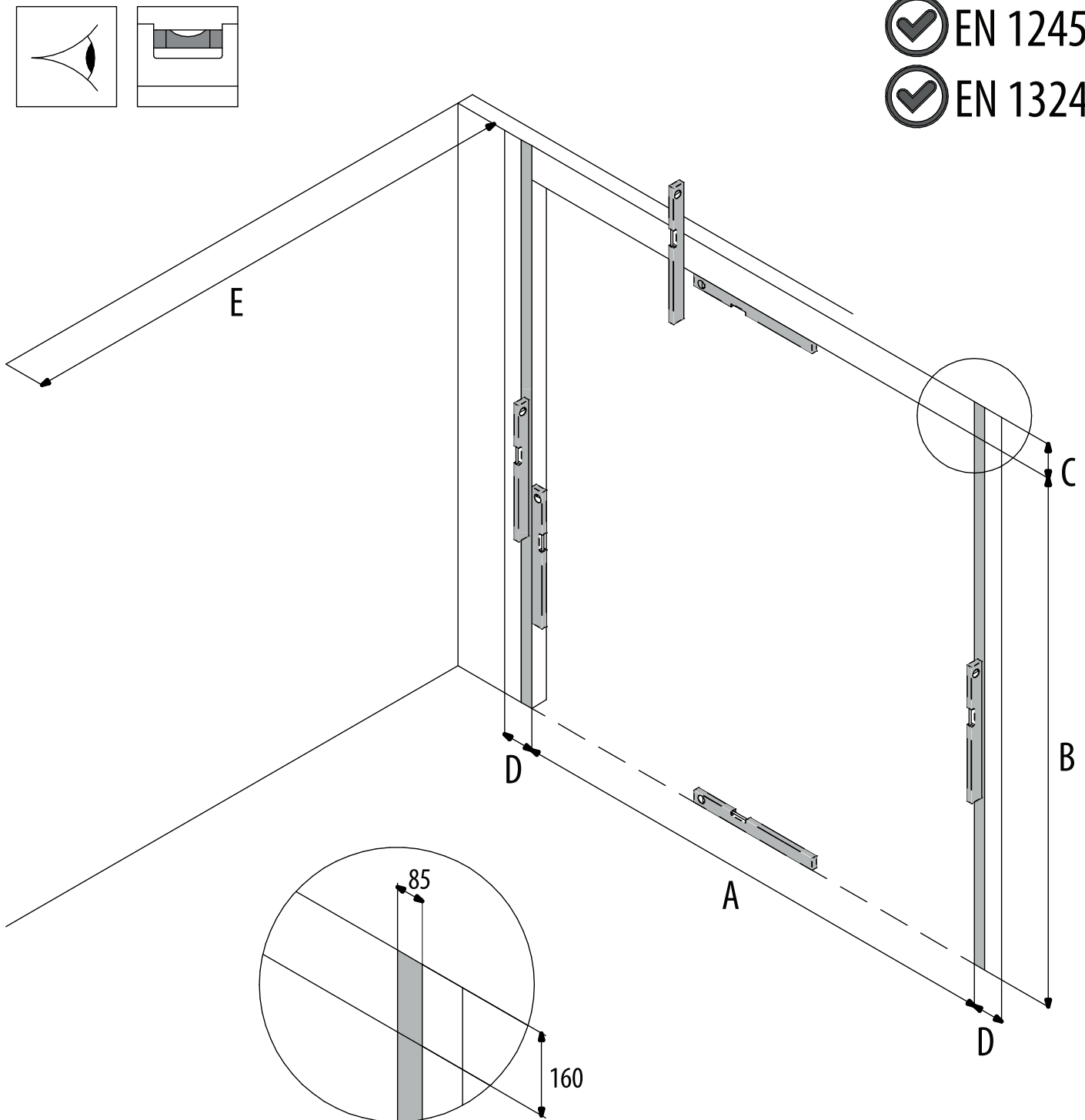


SeceuroGlide | Sectional Plus
Front Mounted System

Fitter's Information Pack - SeceuroGlide Sectional Plus



 EN 12604
 EN 12453
 EN 13241

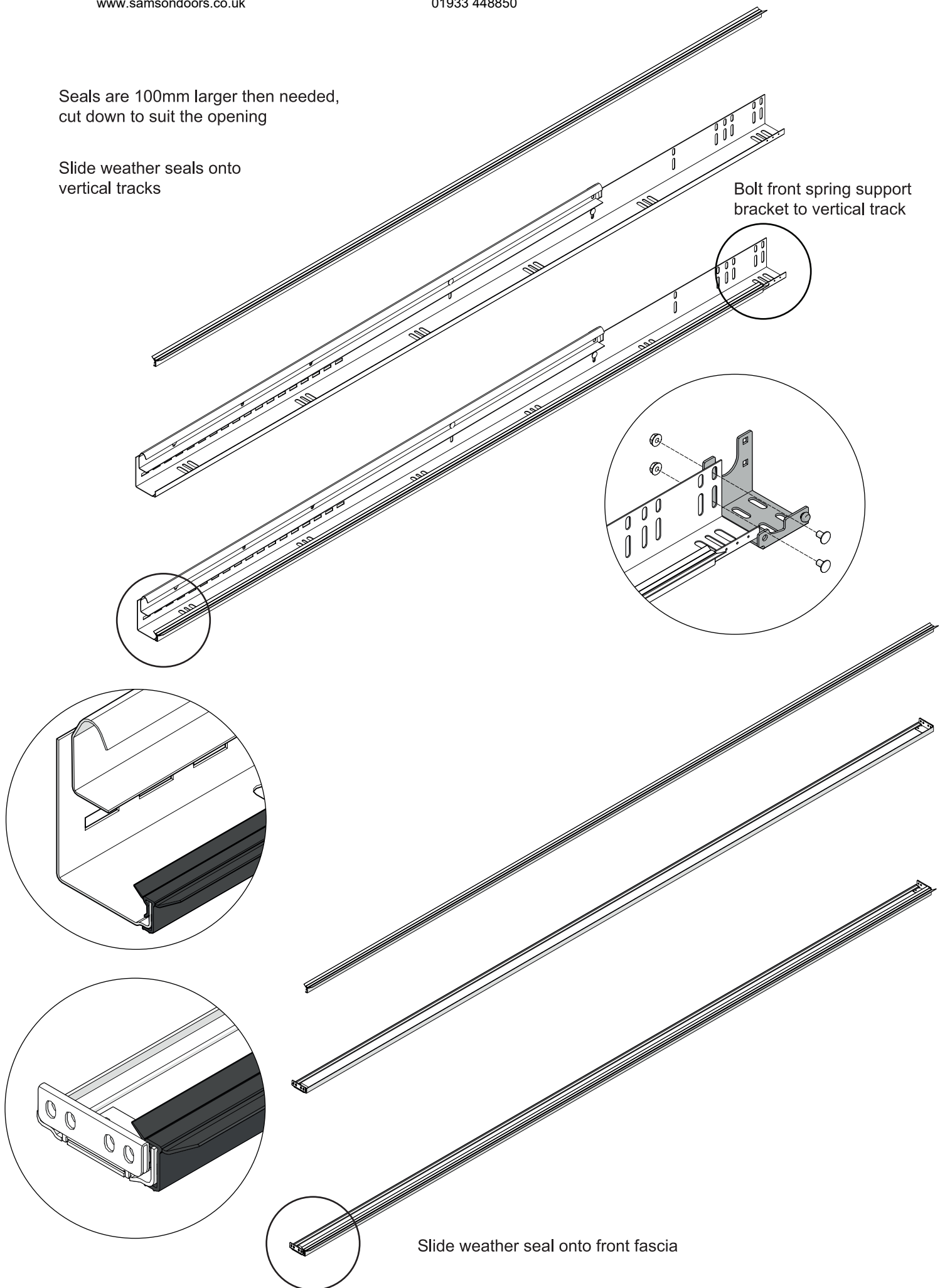


A	B	C	D	E
DLW	DLH	FHR	FSR	FMD
Daylight Width	Daylight Height	Free Head Room	Free Side Room	Free Mounting Depth

Seals are 100mm larger than needed,
cut down to suit the opening

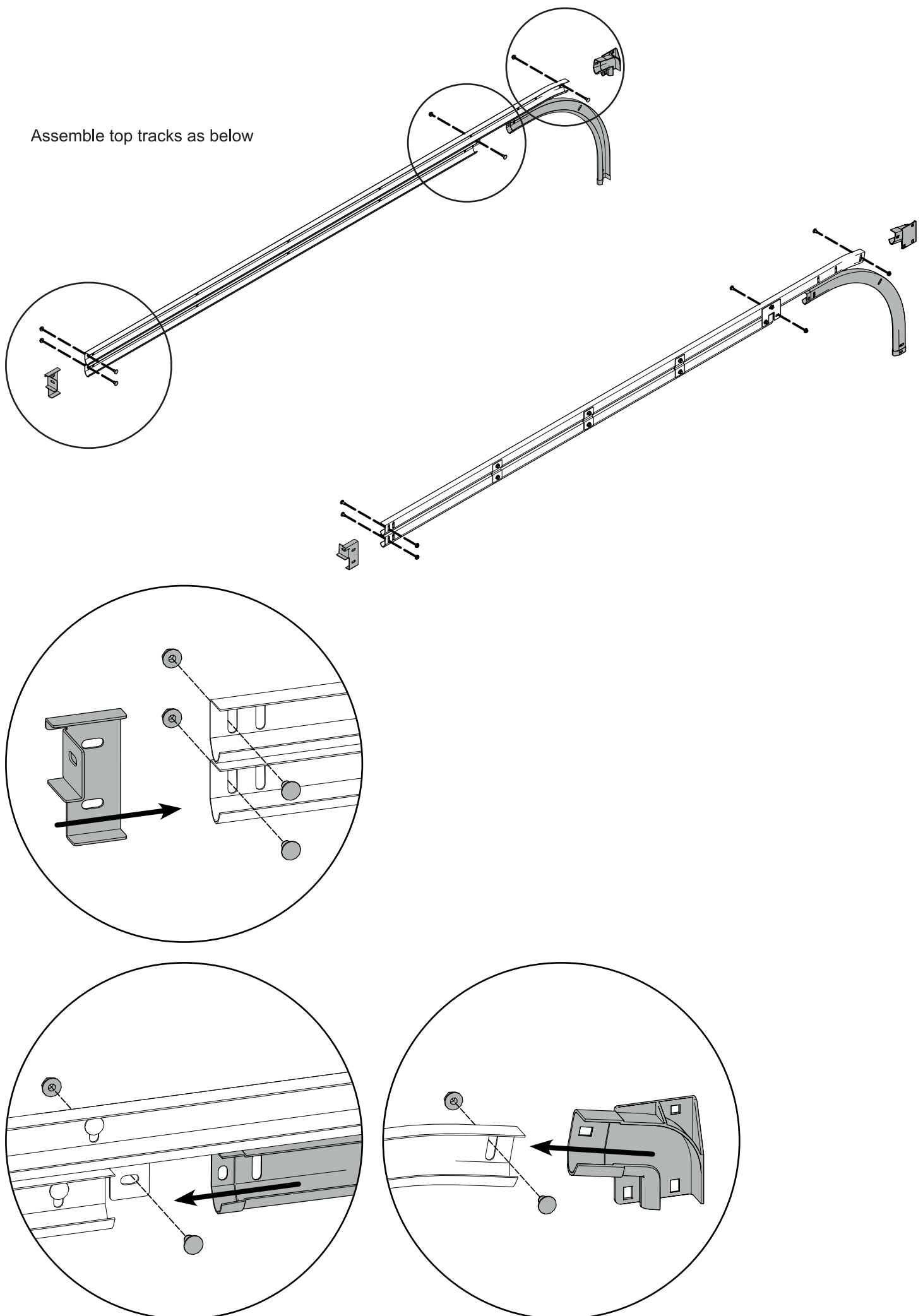
Slide weather seals onto
vertical tracks

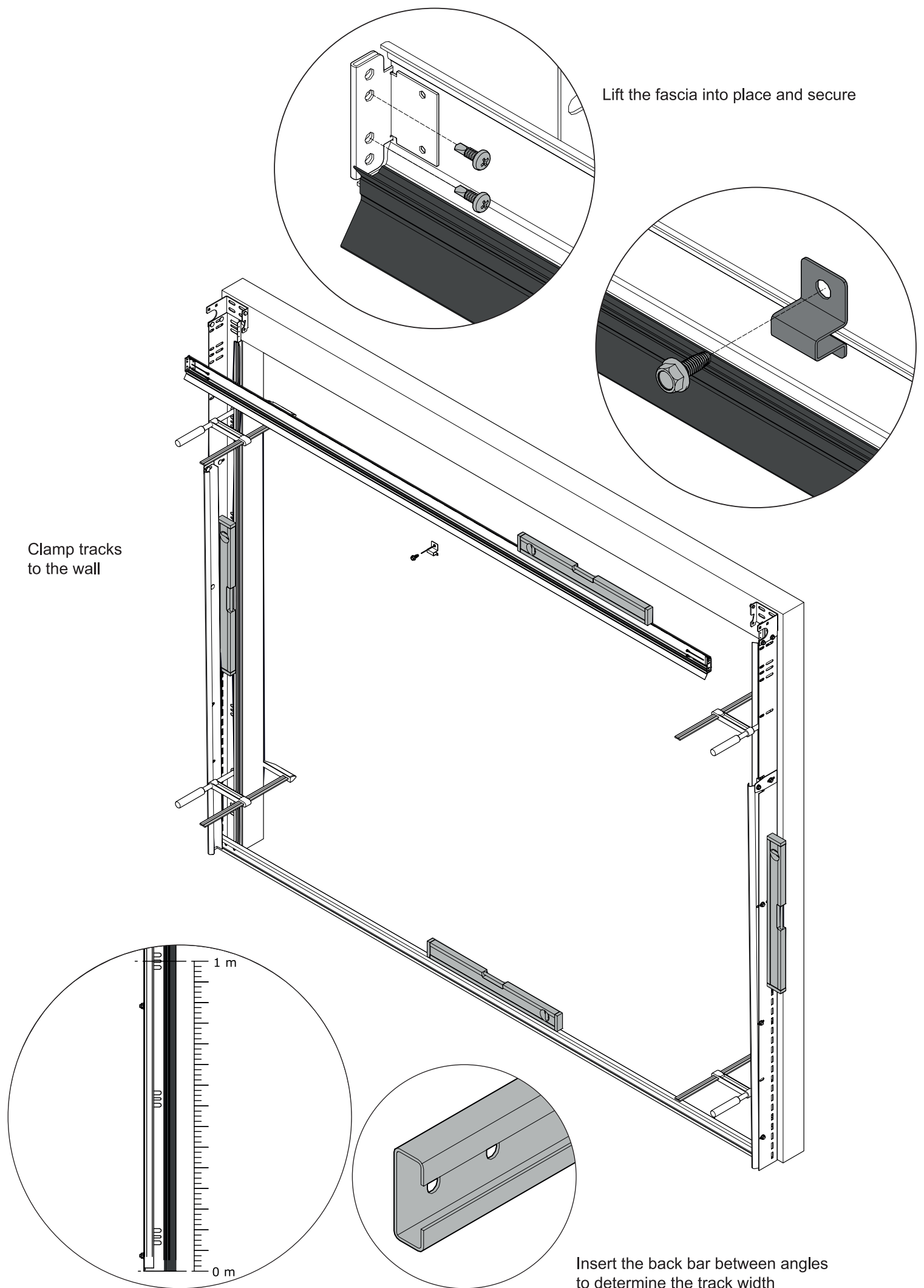
Bolt front spring support
bracket to vertical track



Slide weather seal onto front fascia

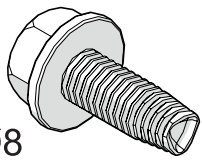
Assemble top tracks as below



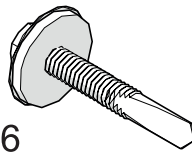


Once the frame is level, secure with the fixings below.

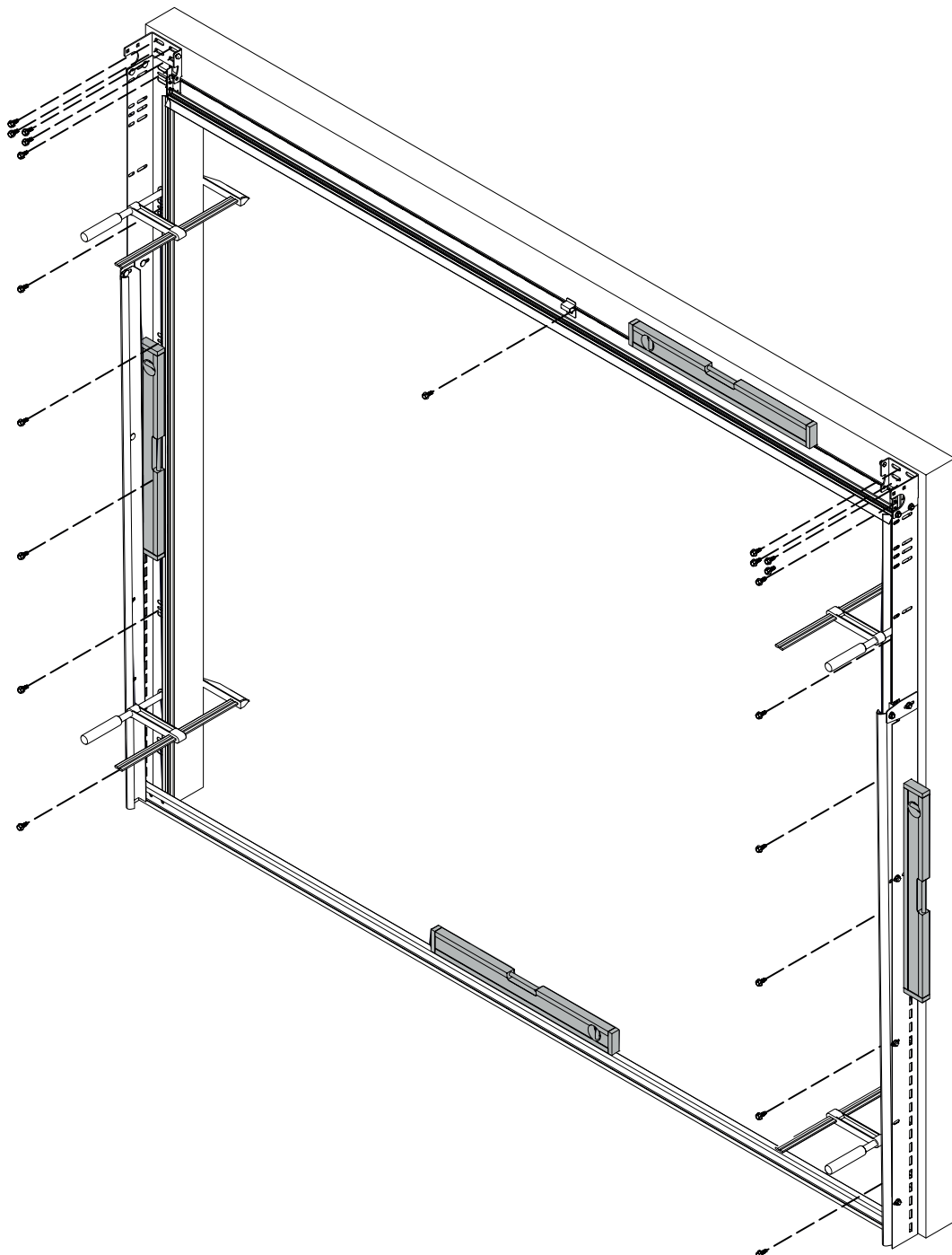
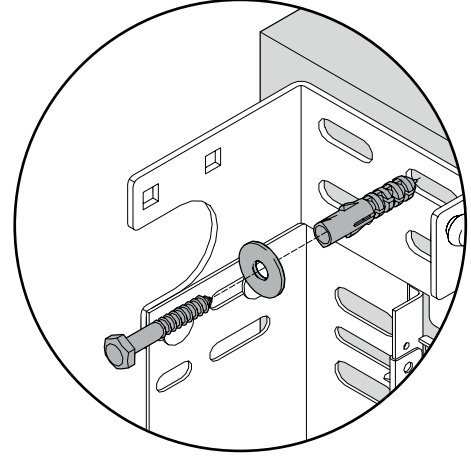
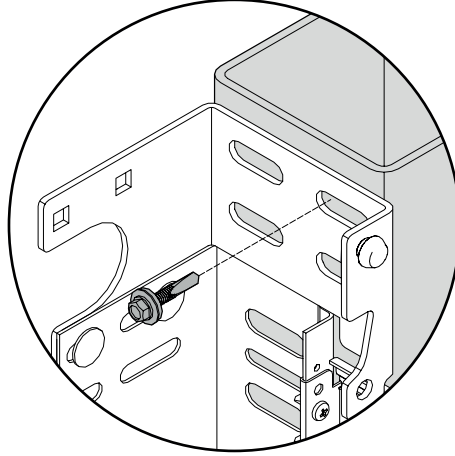
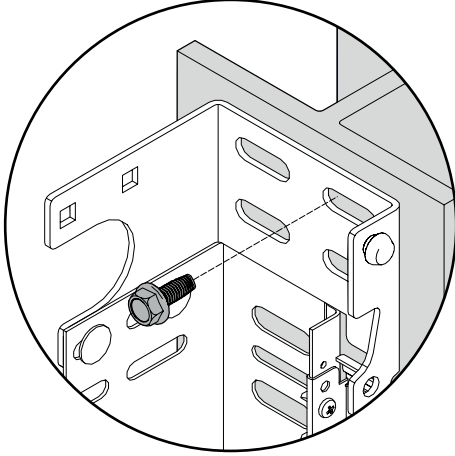
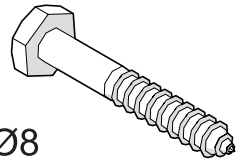
Ø8



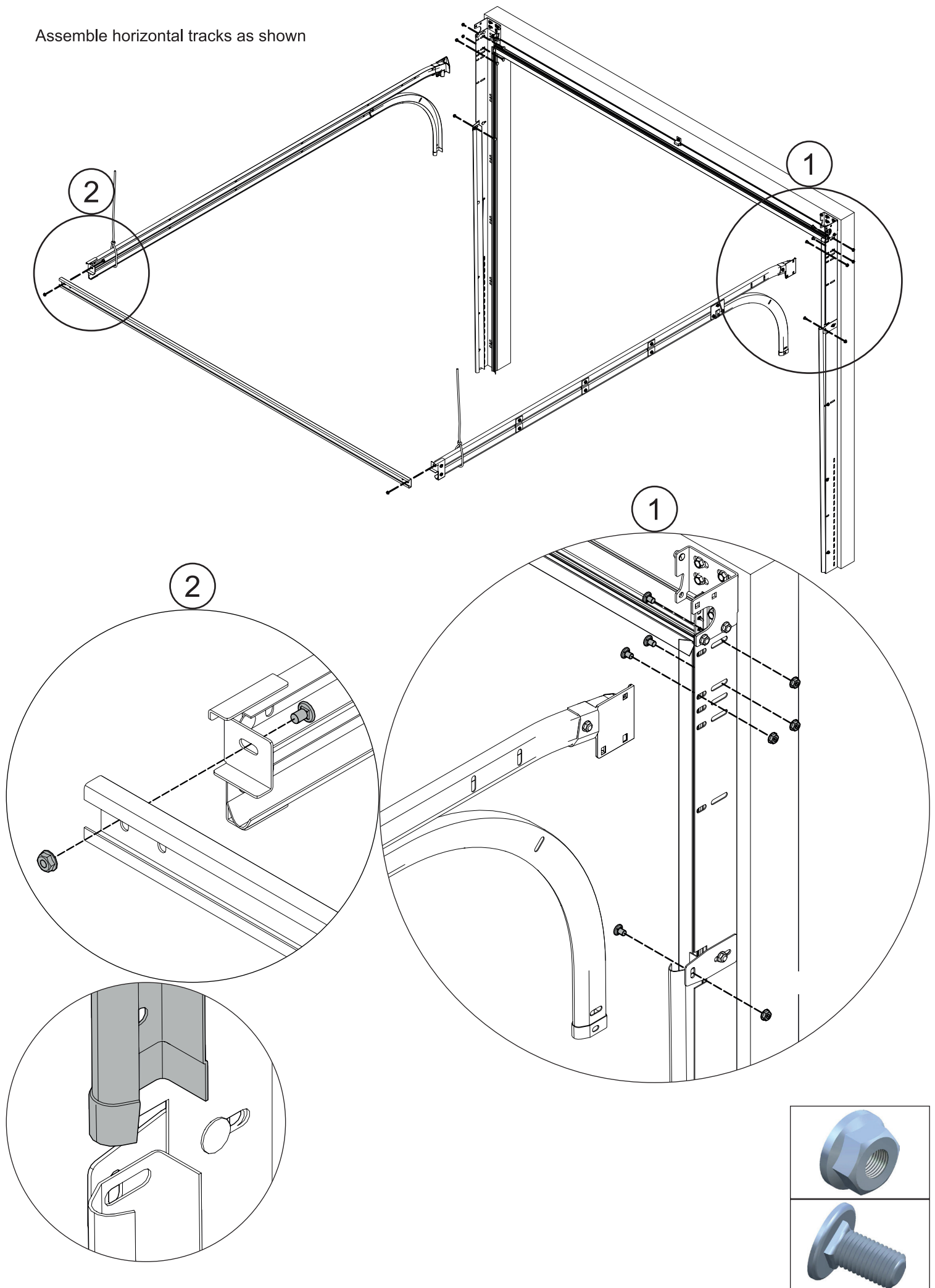
Ø6



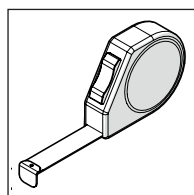
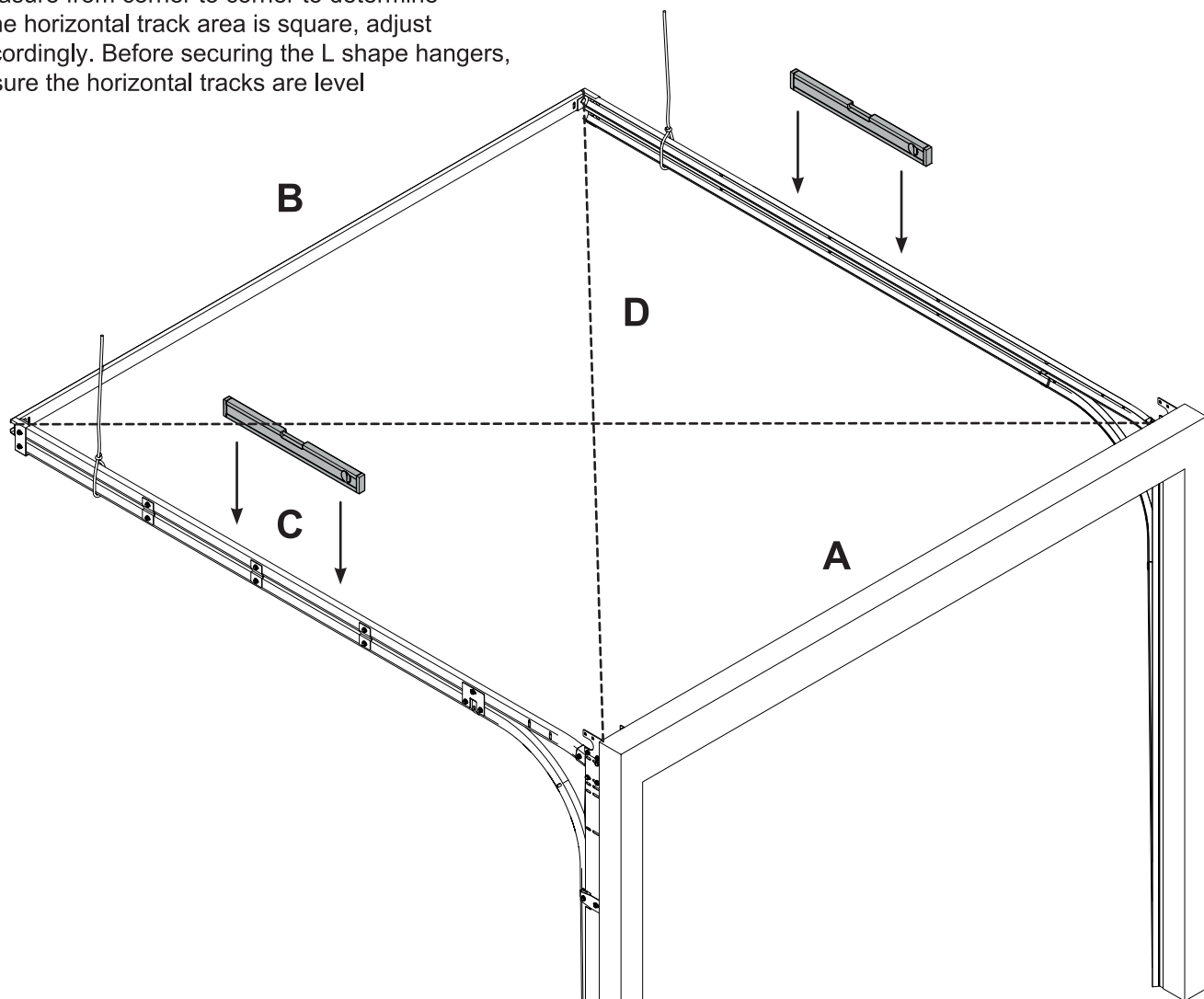
Ø8



Assemble horizontal tracks as shown

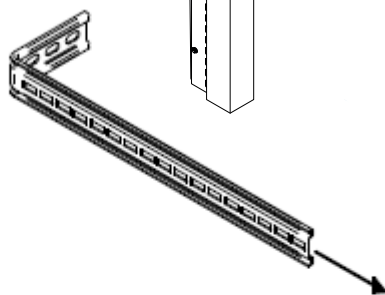
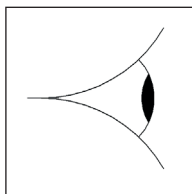
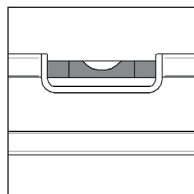


Measure from corner to corner to determine if the horizontal track area is square, adjust accordingly. Before securing the L shape hangers, ensure the horizontal tracks are level

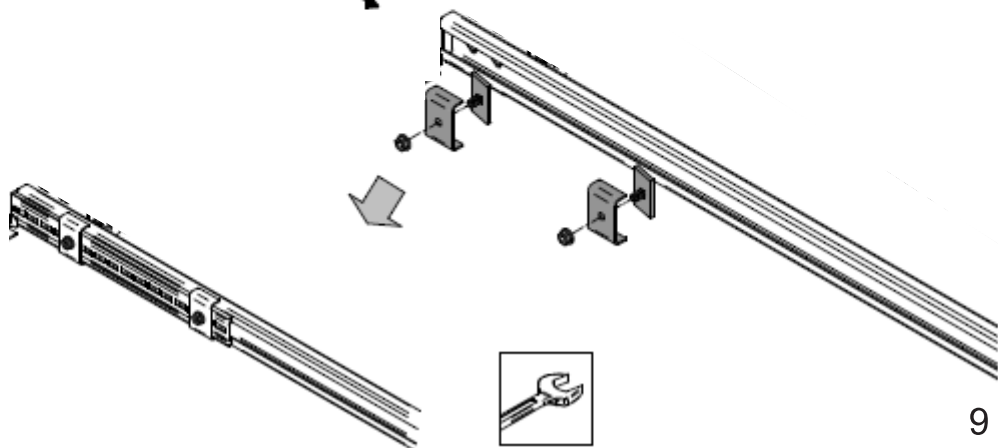


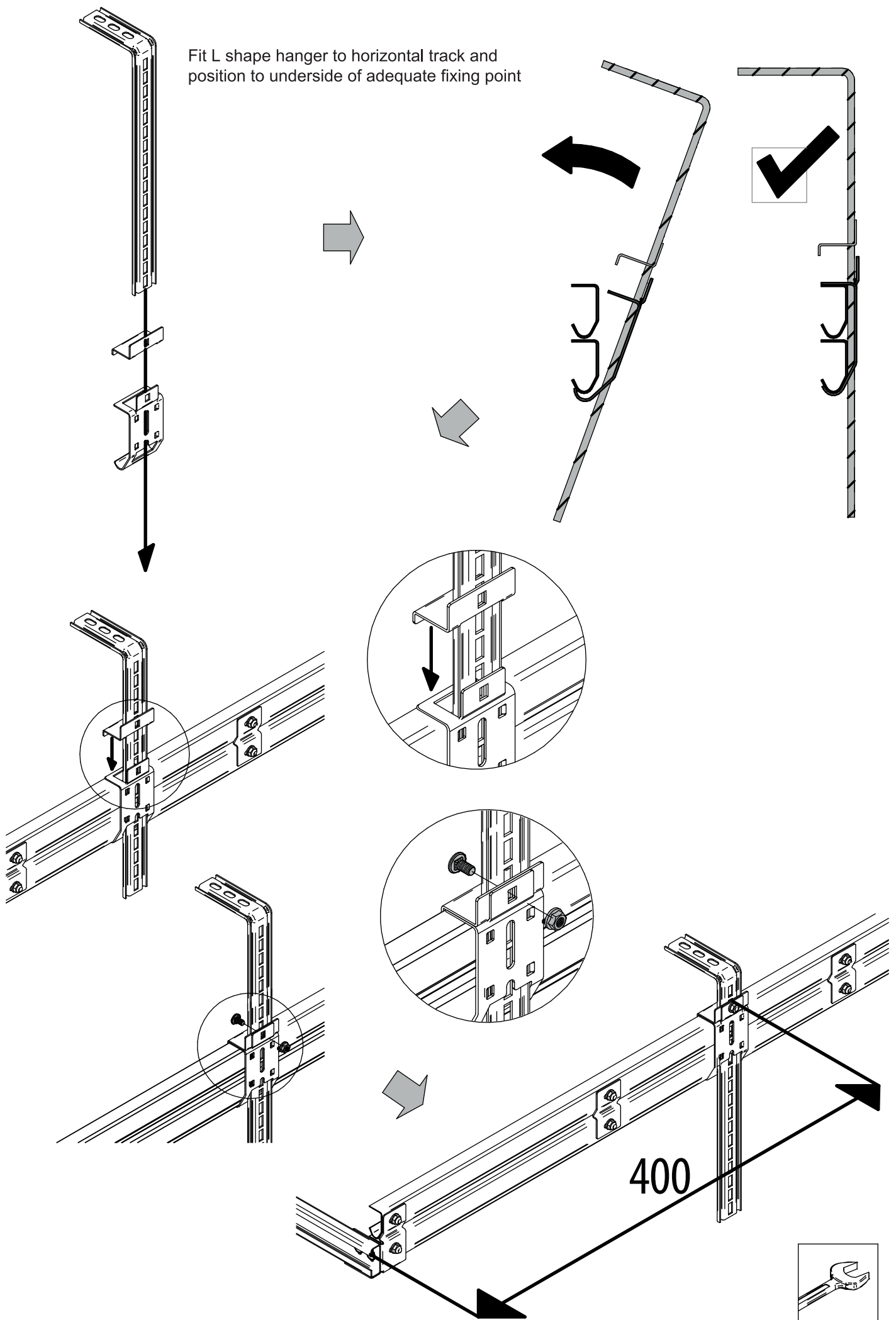
$$A = B$$

$$C = D$$

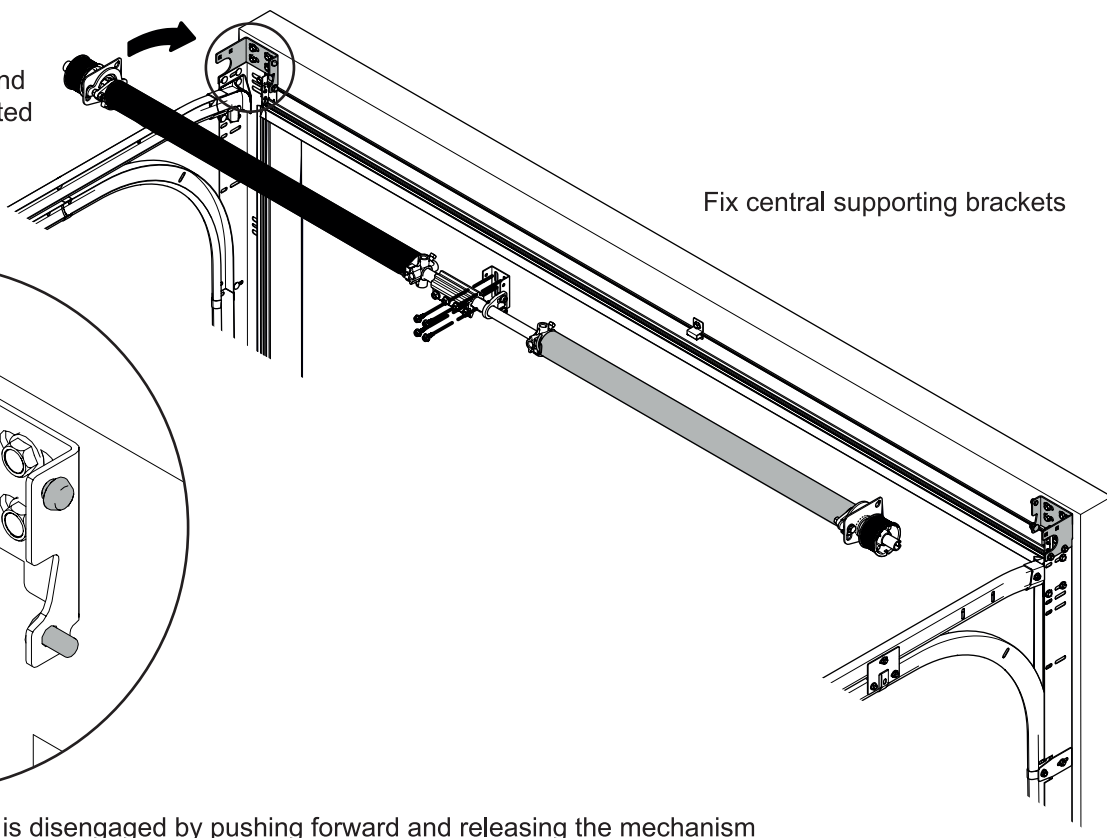


Using the L shape hangers and the clamping brackets secure the back bar to neighbouring walls

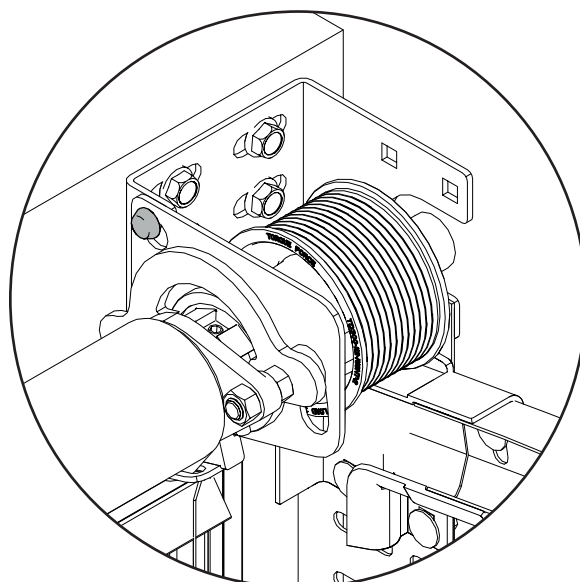
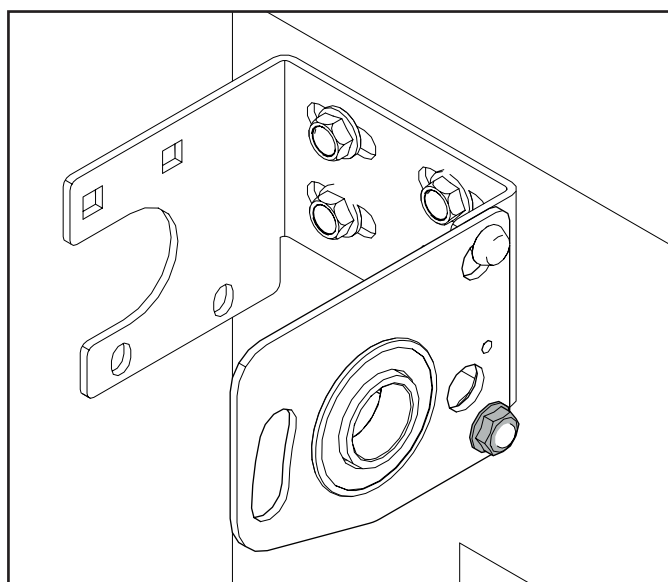
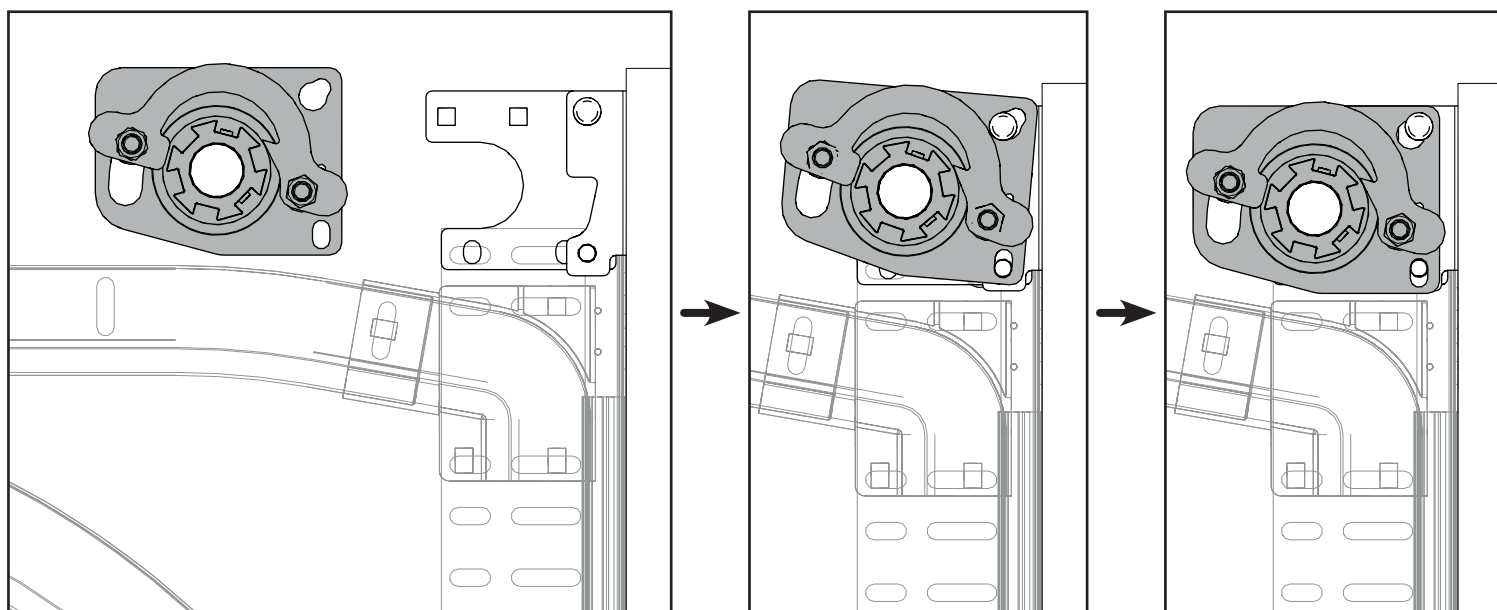




Join the front bar together.
Lift and secure into place and
secure onto the front mounted
brackets

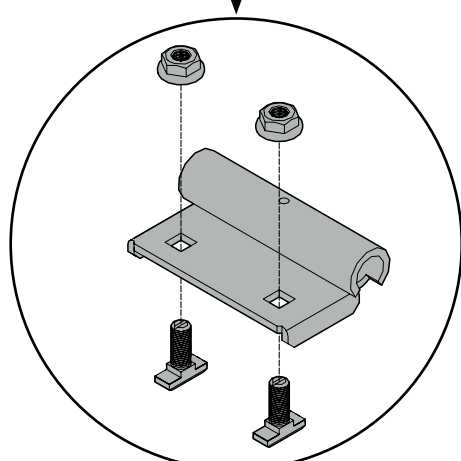
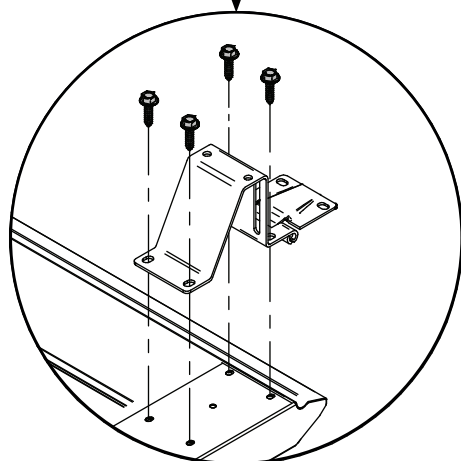
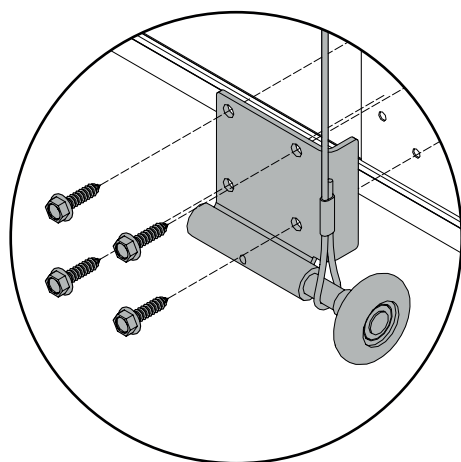


Ensure that the safety brake is disengaged by pushing forward and releasing the mechanism

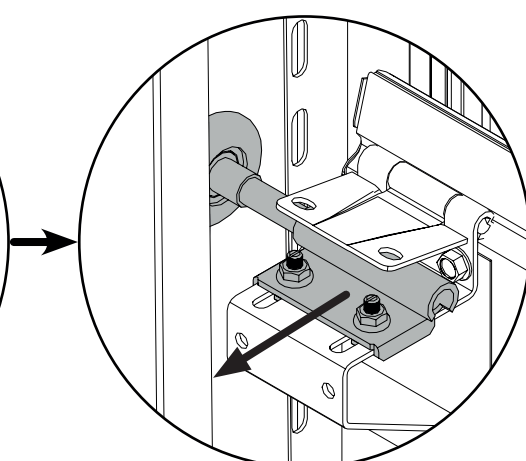
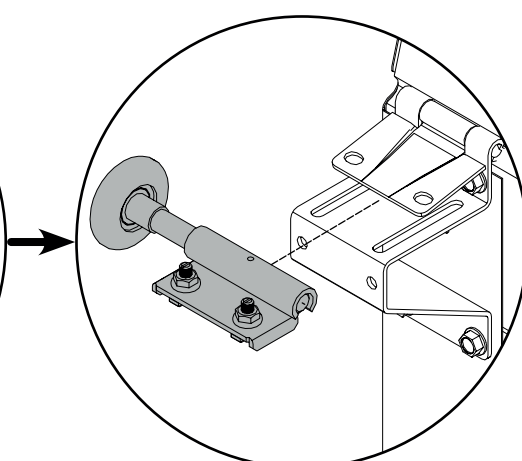


Once the spring mechanism has been fitted, use an M8 nut to secure the components together

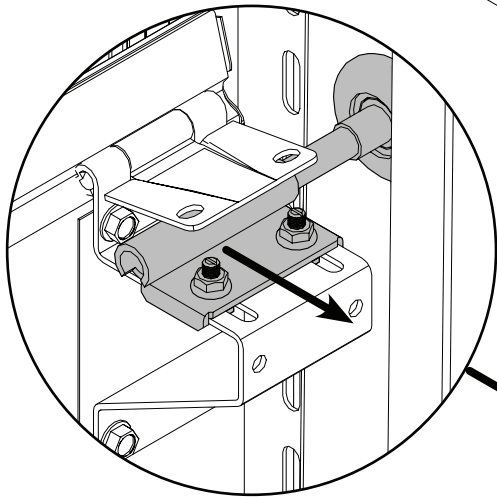
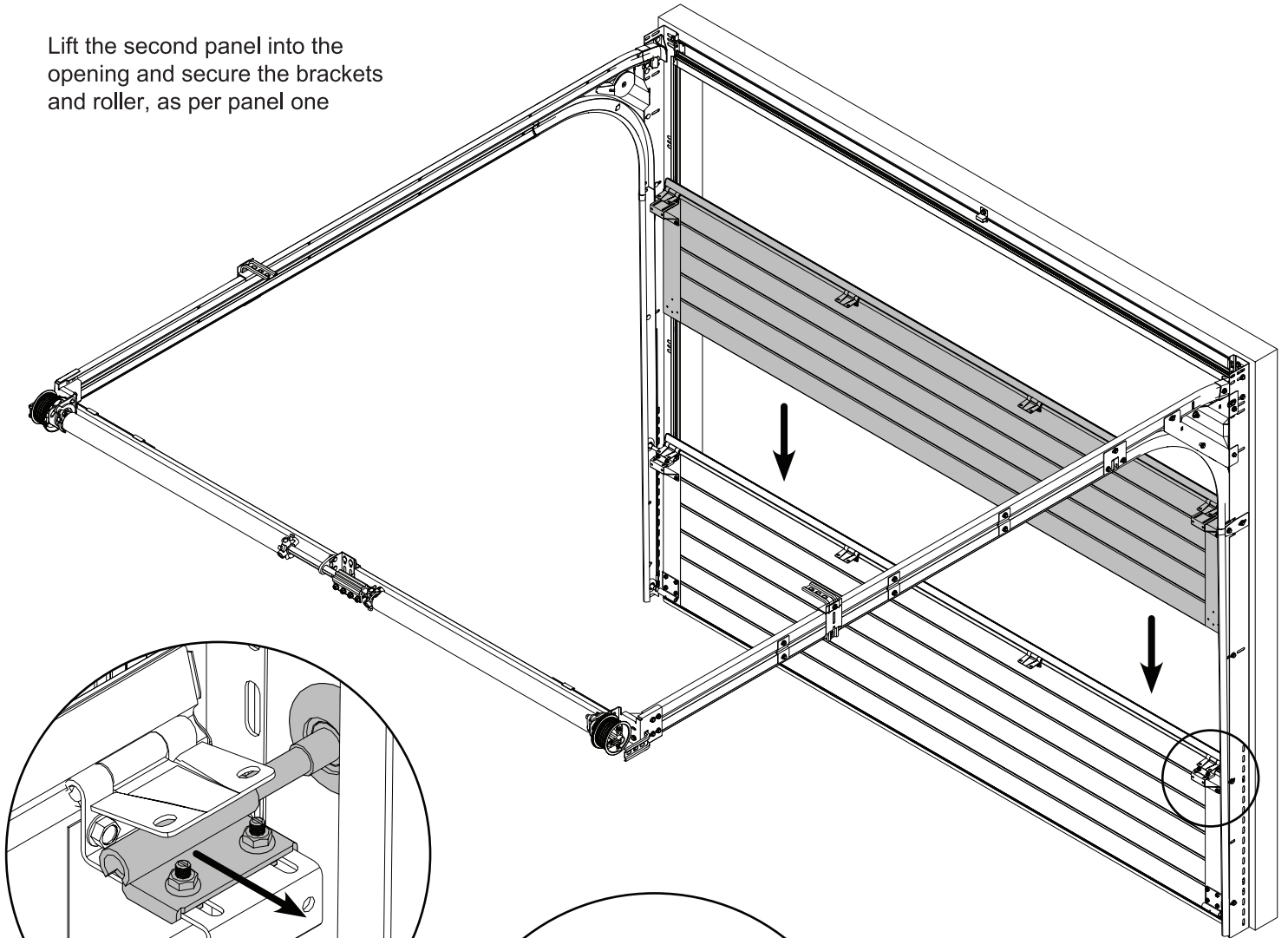
Lift the bottom panel into the opening



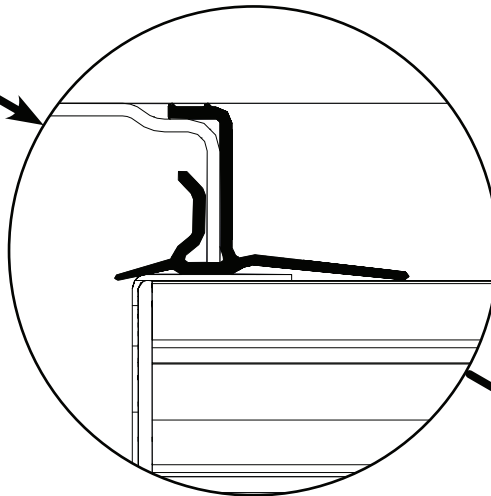
Insert the roller into the track and secure the sliding bracket



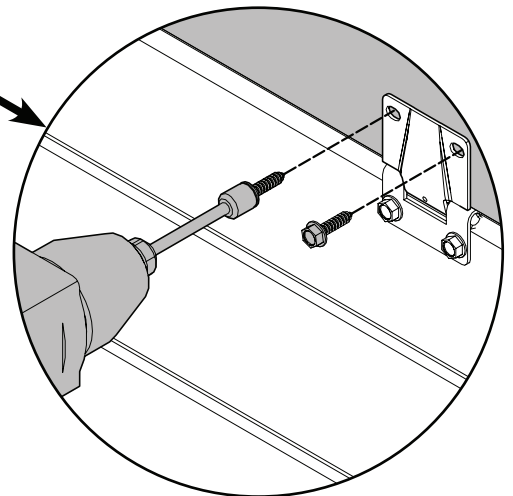
Lift the second panel into the opening and secure the brackets and roller, as per panel one



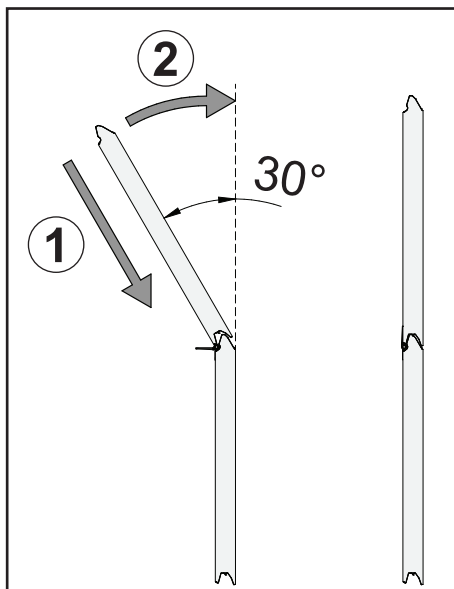
Ensure the roller is located within the track

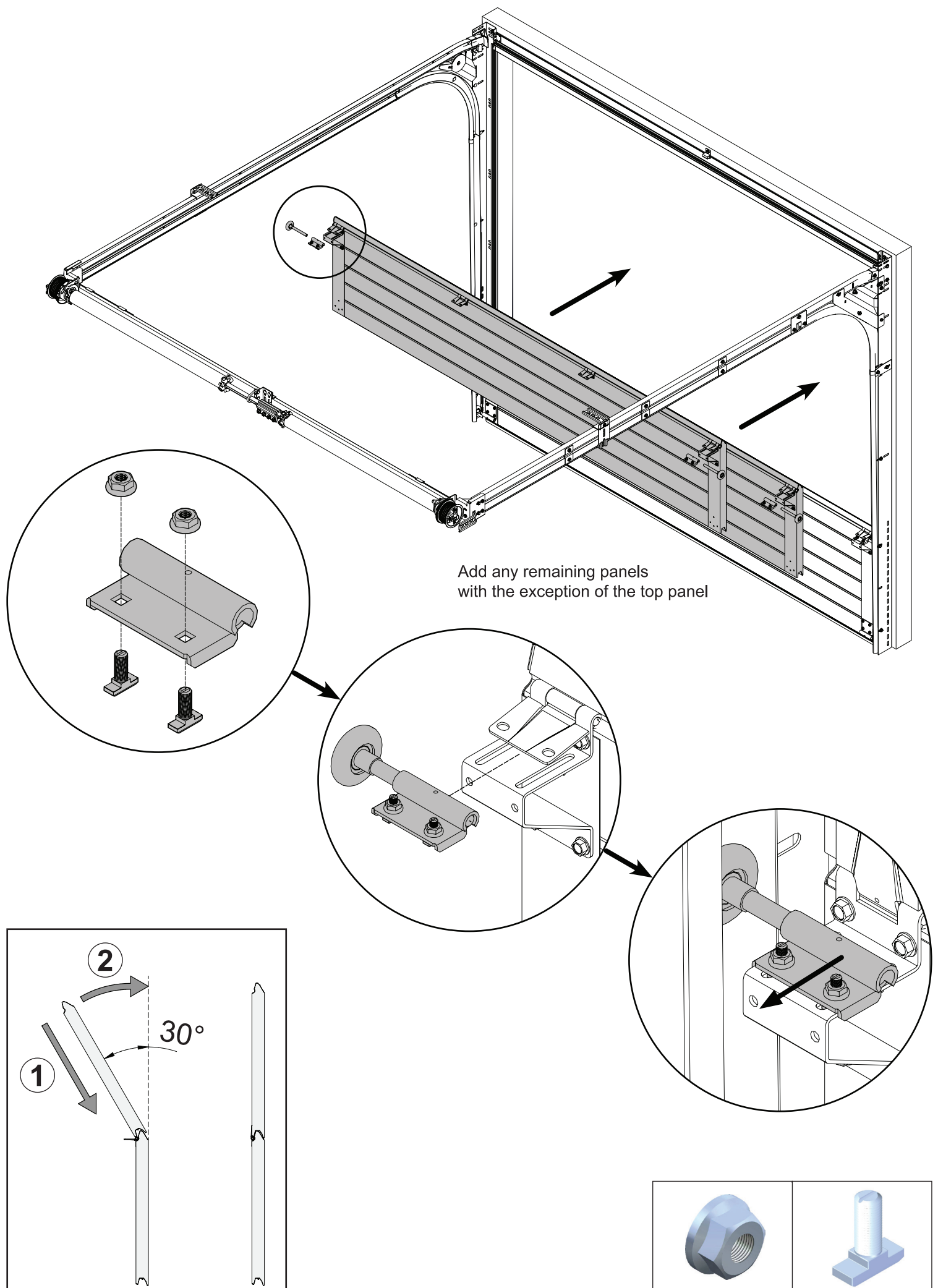


Check panels sit well with the weather seal on vertical tracks

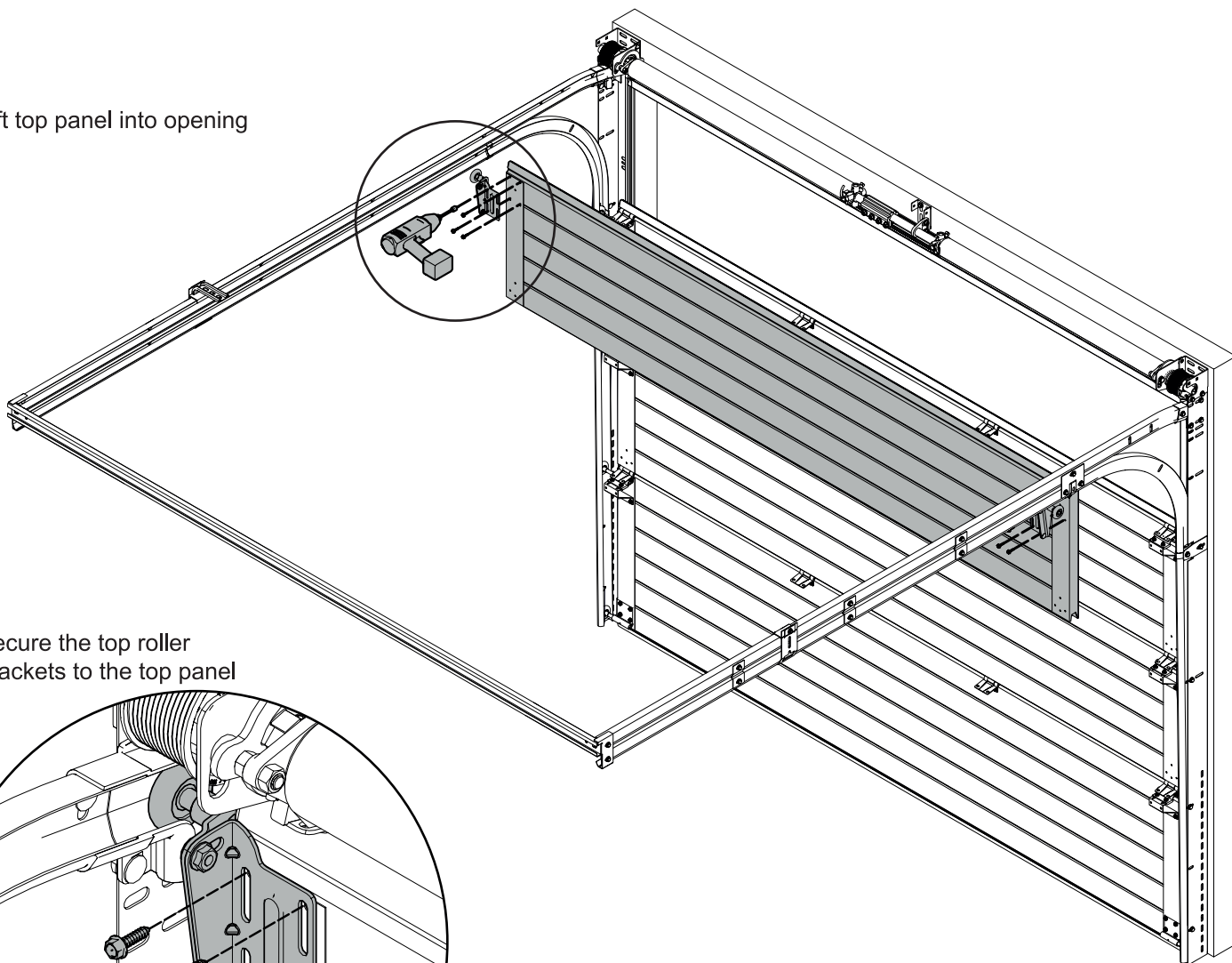


Secure central hinges

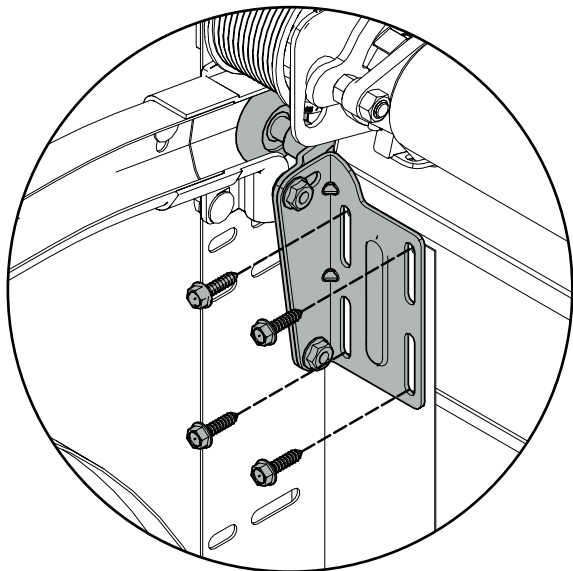




Lift top panel into opening

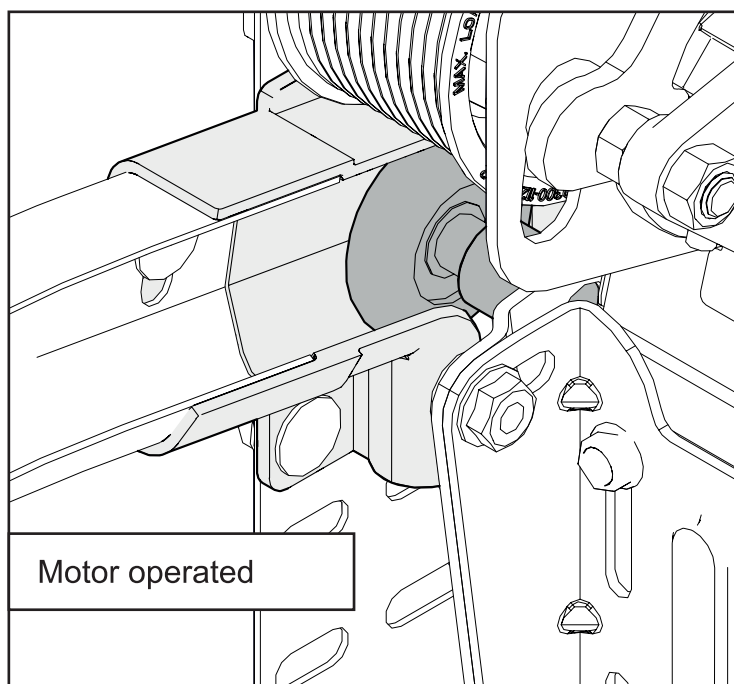


Secure the top roller brackets to the top panel

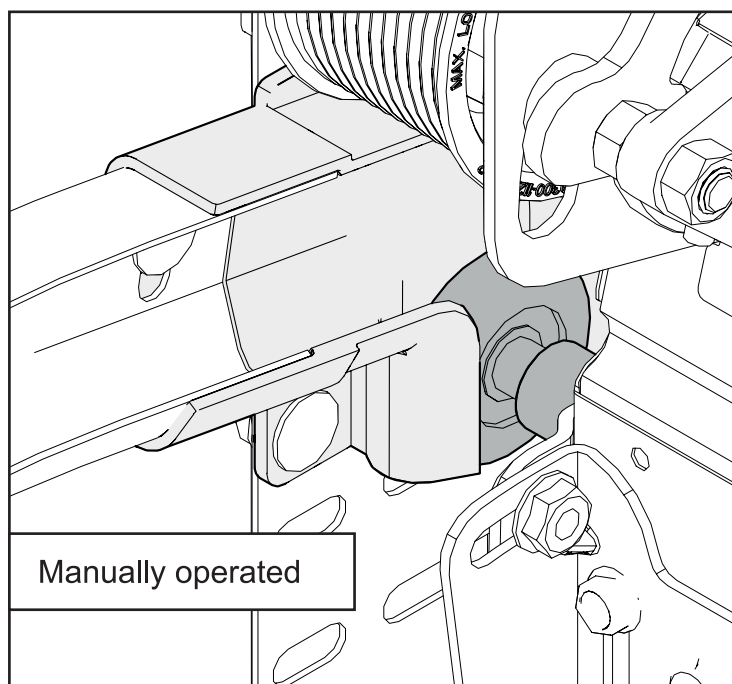


Secure any hinges similar to the other panels

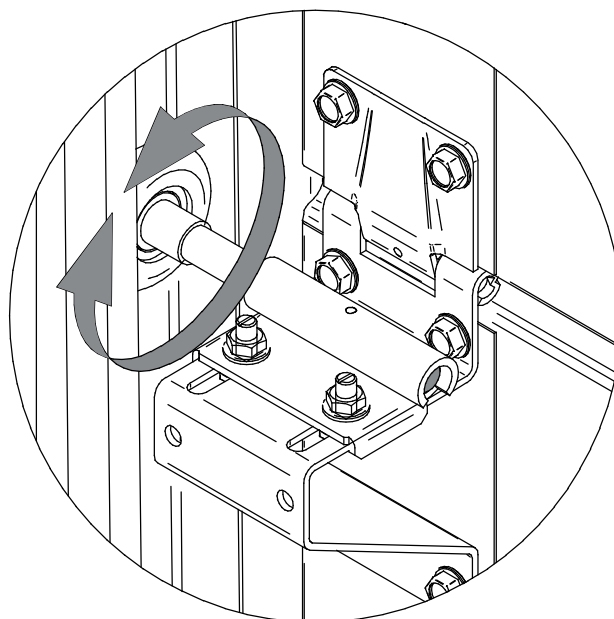
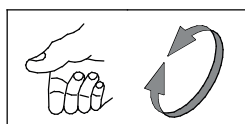
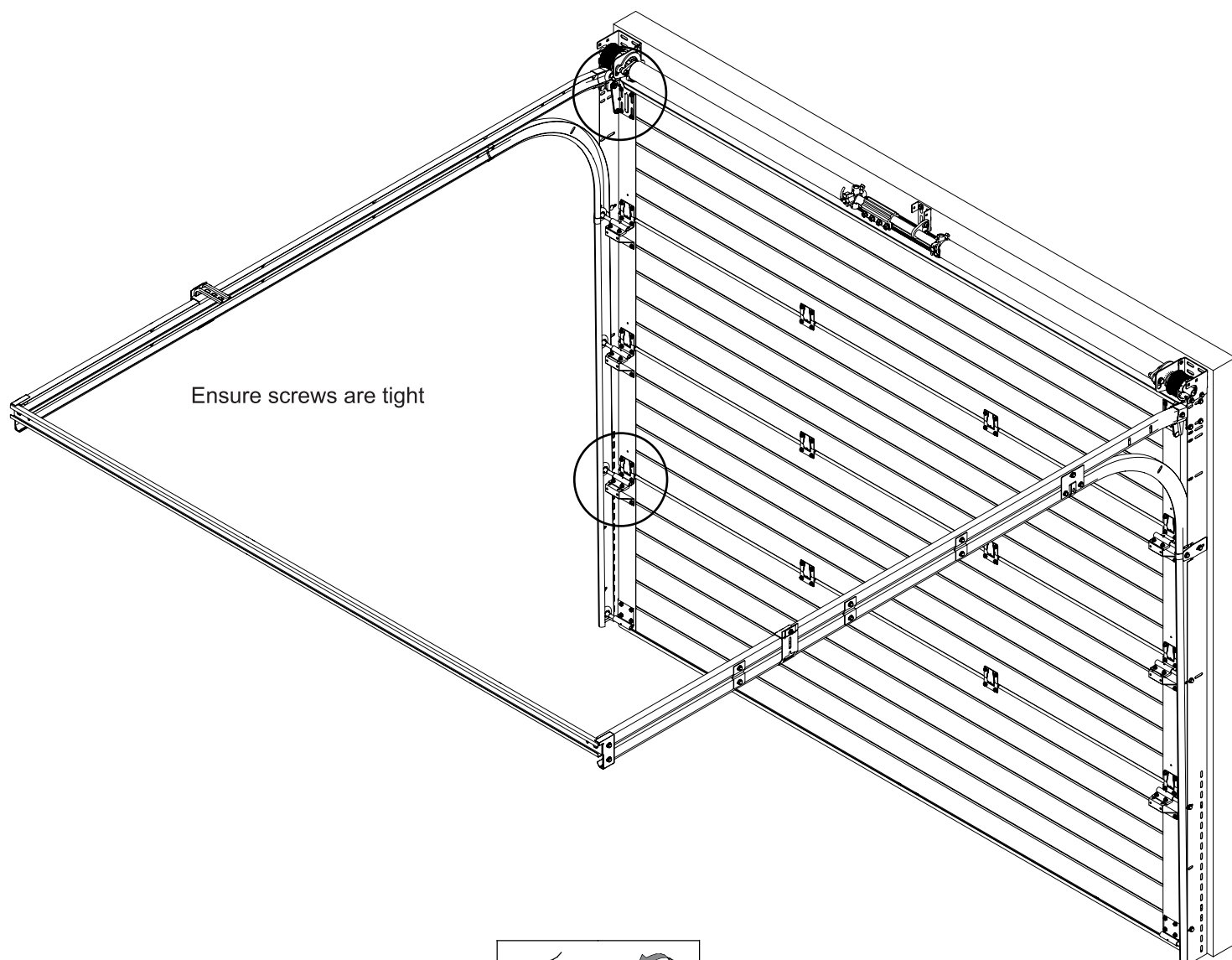
Adjust the top roller for manual or electric operation



Motor operated

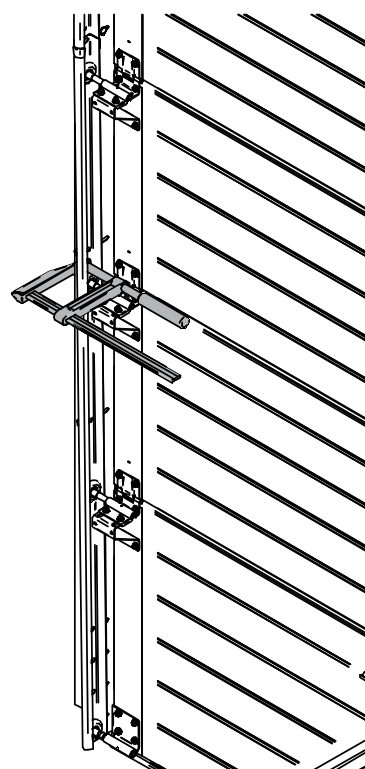
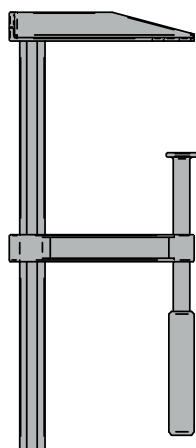


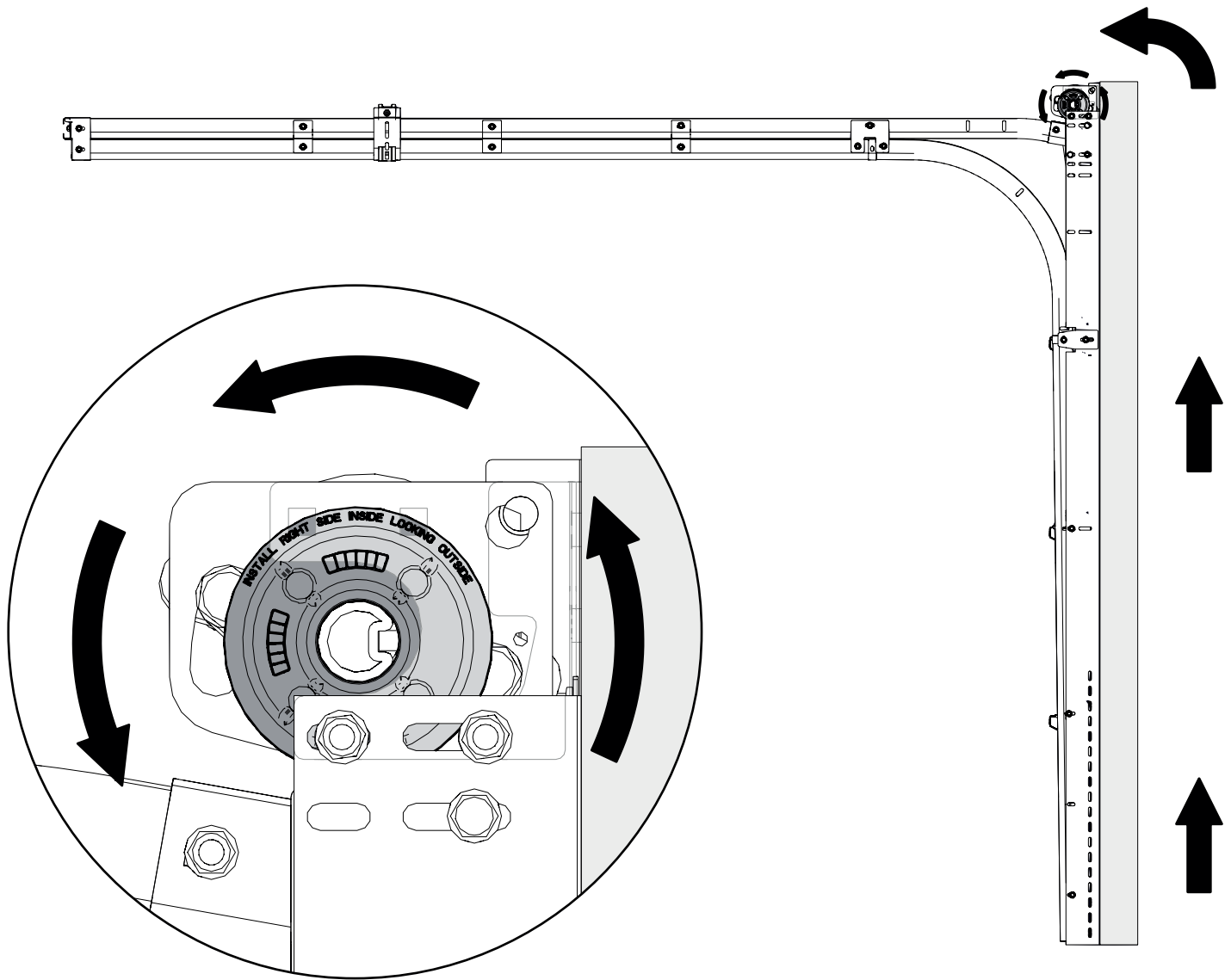
Manually operated



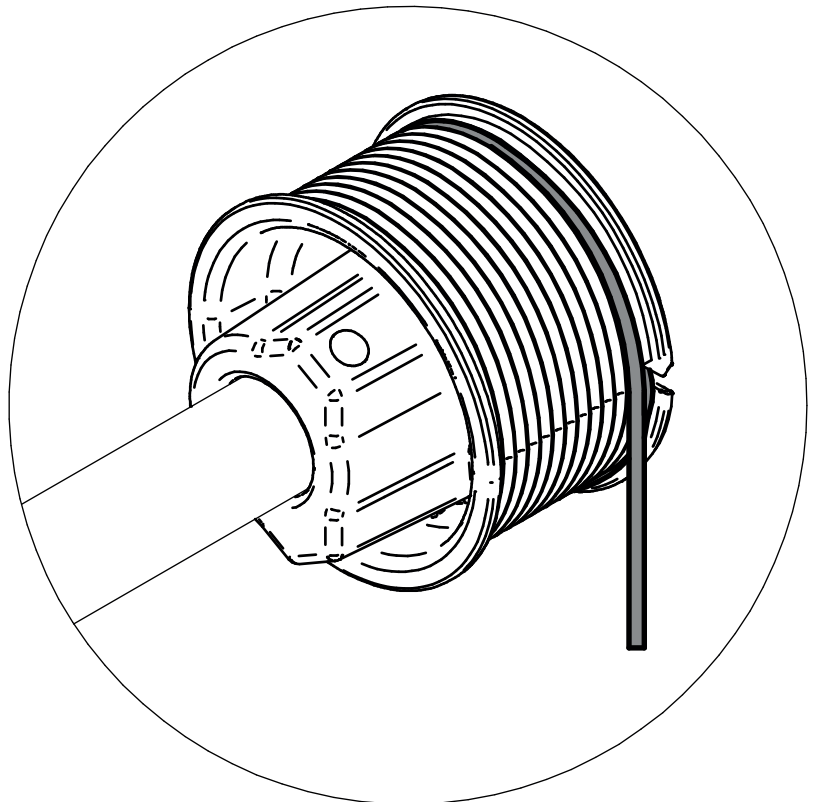
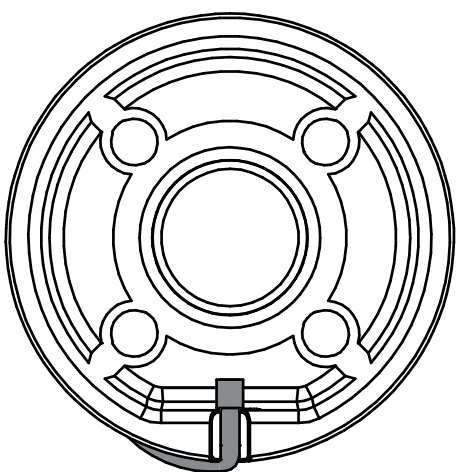
Ensure rollers are freely moving

Before tensioning the door, clamp the panels into the down position



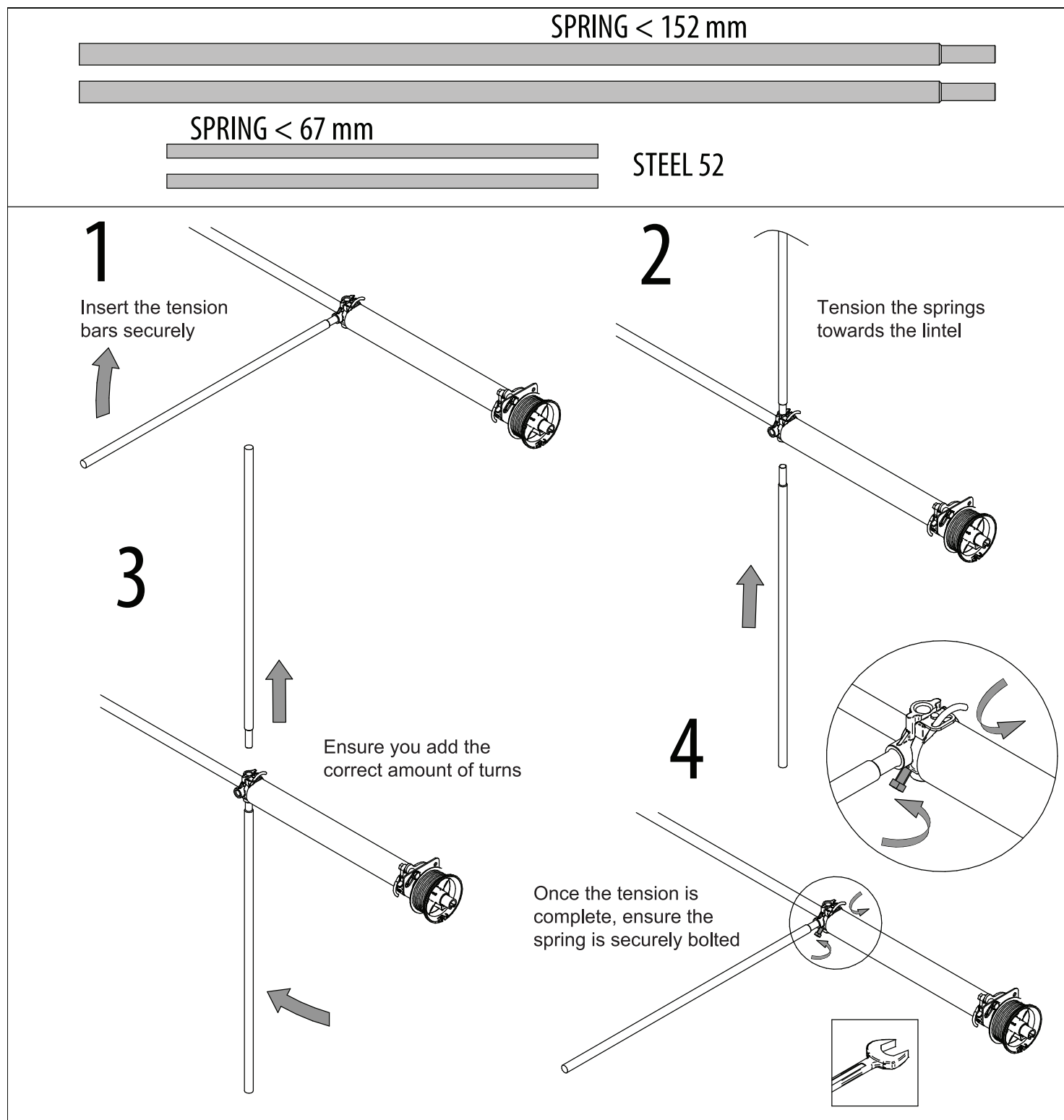


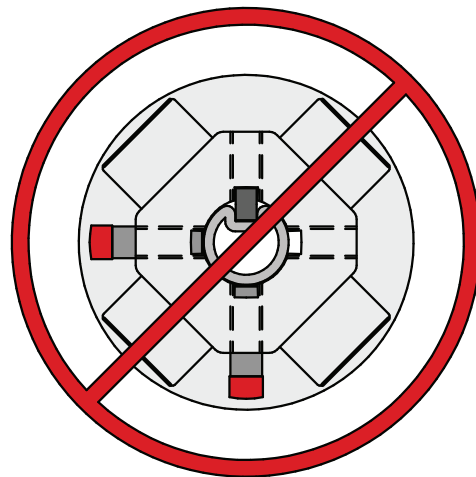
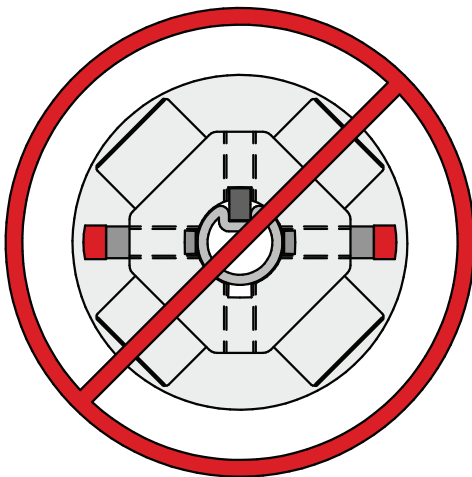
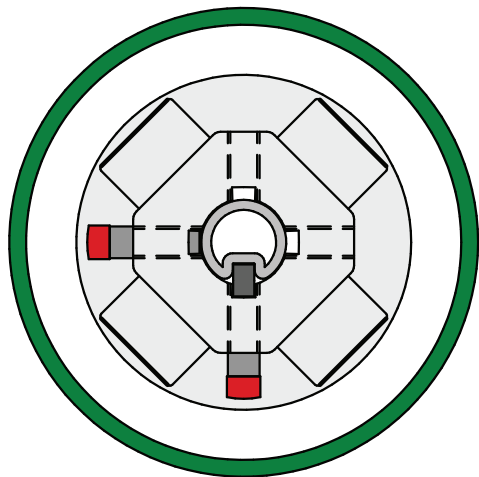
Ensure the cables fit neatly into the groove

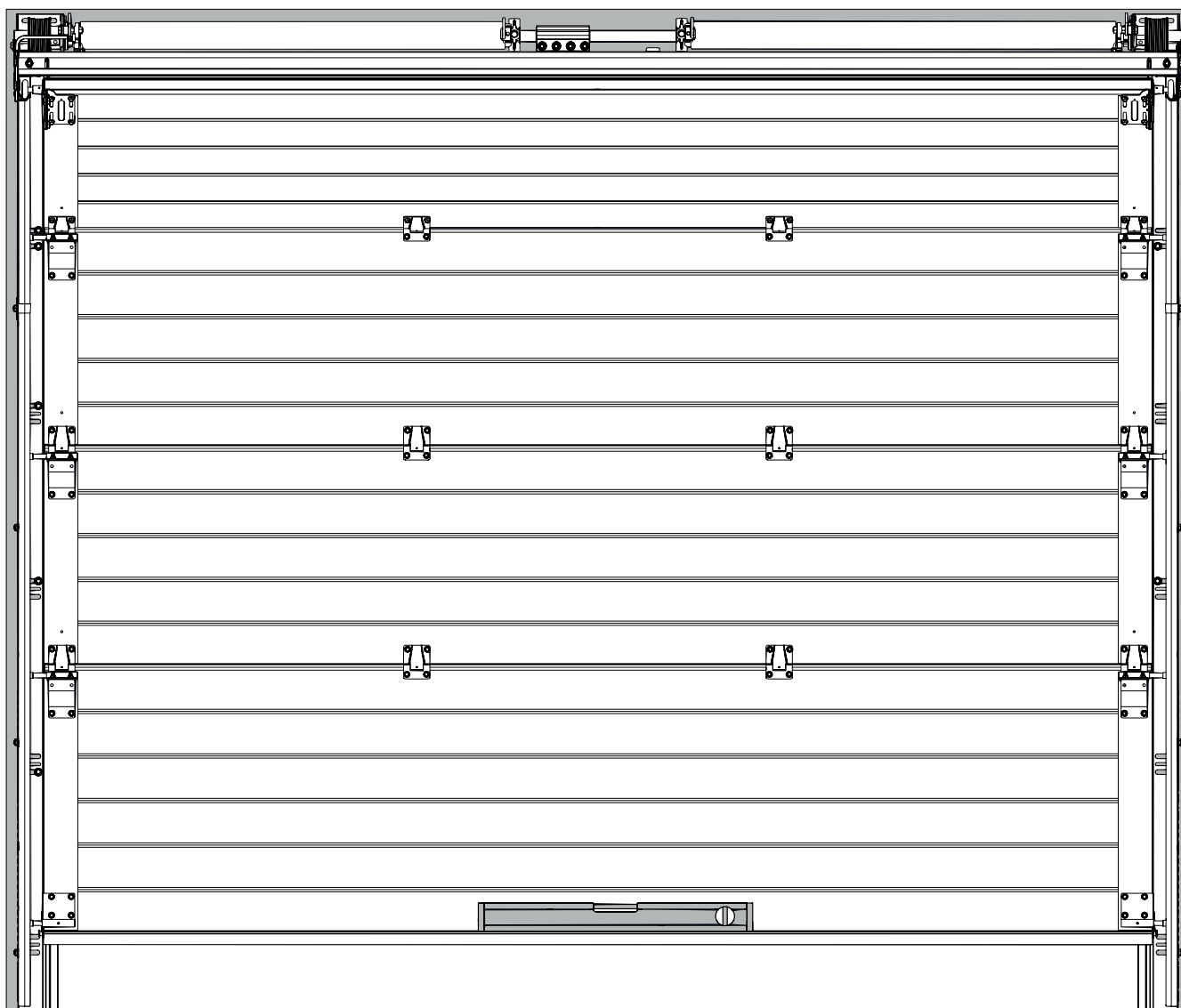


Locate the cable lug into the notch on the outside of the cable drum

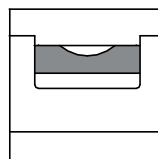
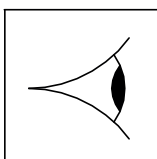
Check paperwork or spring tension label located on the spring for number of turns



EN: Correct fastening of winding plug

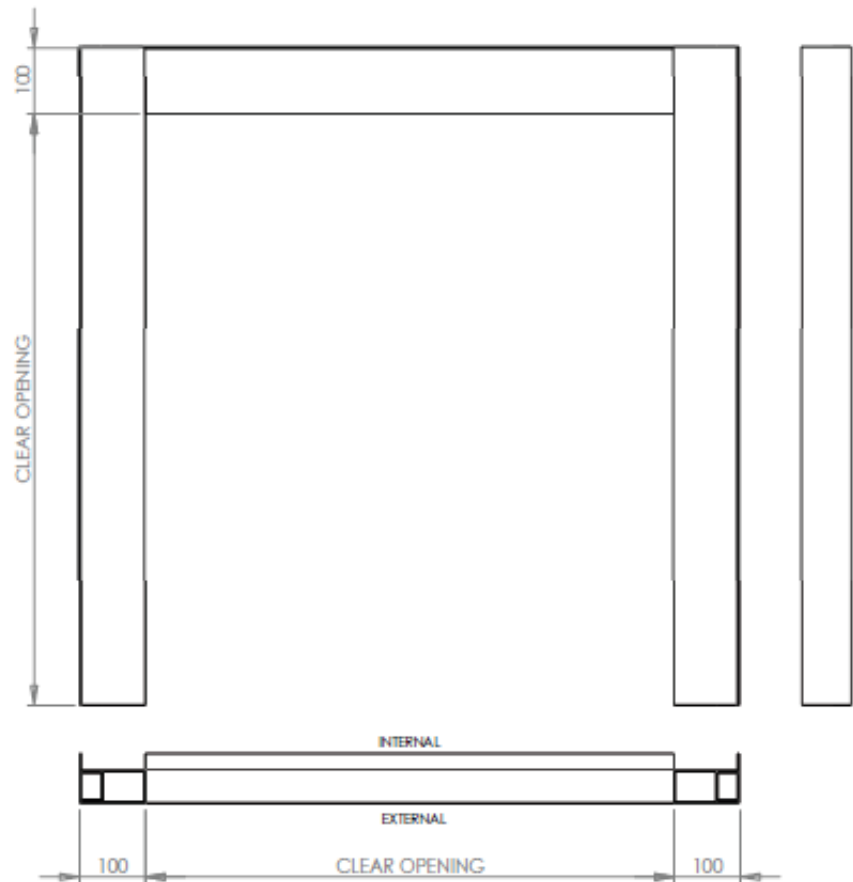
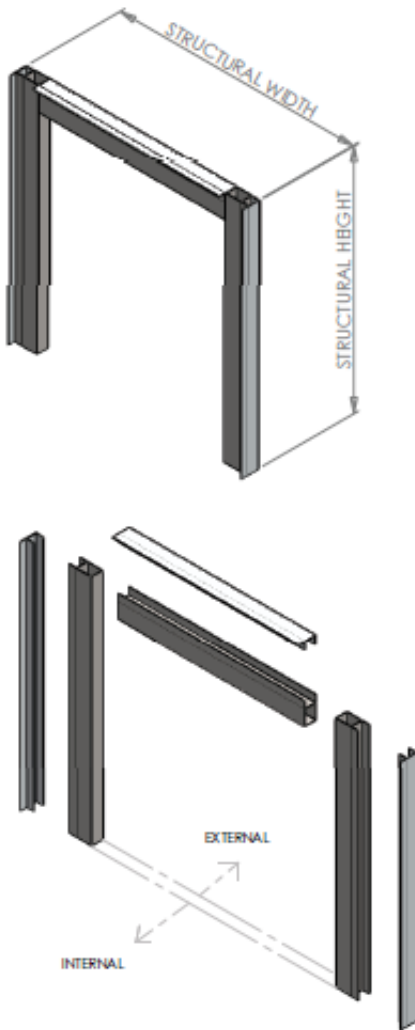


Once the tension is in place, check that the door is level.
Check the balance and adjust if necessary



Reveal Options

Executive Framing Kit



Reveal Brackets

Position 5 per side, secure each bracket with 2 M8 x 18 bolts and M8 serrated nuts

