

Items specification

Ver. 09/2023 V1.0

Sliding door BOOK LINE
Model ATLANTE

Atlante

Book Line, folding and sliding doors.
Designed for big sizes.

Wings

Vertical-wing panels, 52mm thickness, consisting of two levelled and opposed steel sheets, galvanized with Sendzmir system, pre-lacquered and with smooth finishing or stucco embossed; laterally dovetail-outlined to contain the gaskets. Coupling without thermal bridge between internal and external sheet with injected polyurethane foam with 40 kg/mc. Internal tubular supporting frame, in galvanized steel, created to stiffen the panel and safely fix the hinges.

The upper and lower end of the panels are closed by Sallox black tarnish aluminium profiles, upper and ground sealing with brushes fixed on the profiles. The lateral ends of panels are provided with tubular rubber EPDM double lip, on the opposite side through rubbers on the wing and brushes fixed on the wall.

Side Profiles

Closing profiles, made with same pre-lacquered sheet, same finishing of wings.

Fillings available

Aluminium frame with panel 30 mm.

Double-glazed acrylic glass scratch-resistant 30 mm.

Double-glazed acrylic glass 30 mm.

Double-glazed tempered low-emission 5+18+5 mm.

Expanded sheet 15/10 ST 7,3.

Multiblade ventilation grille 30 mm.

Steel grilles 50x50x4.

Tracks

Sliding tracks made in galvanized steel of 3mm. The adjustable supporting U bridges, combined with adjustable brackets, assure the correct position of the track for any kind of installation.

Mechanical galvanized steel limit switches, set the stroke of the trolley at the opening/closing of the wings.

Available Versions

Hanging with floor track.

Hanging without floor track.

Sliding with floor's wheels.

Available Productions

With single wing

With double opposed wing.

With double overlapped wing.

With double opposed overlapped wing.

Assembly

Fixing in the opening and to the wall. Installation both internal and external side of the building.

Standard equipments

Track casing in order to protect and cover the upper tracks, and interlocking profiles for the fixing composed by pre-lacquered sheet.

Trolleys with 4 nylon coated wheels with dustproof ball bearings.

Black lacquered steel lever bolts, with black lacquered galvanized steel closing rods.

Ground joints for lever bolt on the floor.

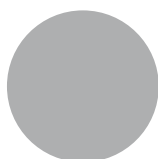
Internal handles for the handling operation of wings.

Panel standard colour, smooth surface: External side White-Grey, Internal side White-Grey. Panel standard colour, Stucco embossed surface: External White C21, Internal White C21. Aluminium label with door identifying data, CE marked and main instructions.

Assembly instructions, maintenance handbook including law certificates.

Standard colours of coat

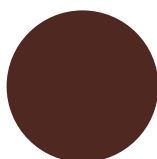
external
/internal



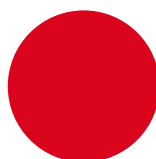
White-grey



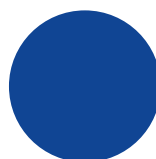
RAL 9006



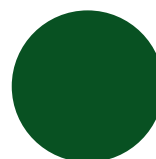
RAL 8019



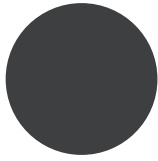
RAL 3000



RAL 5010



RAL 6005



RAL 7016



Stucco C21



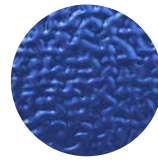
Stucco C81



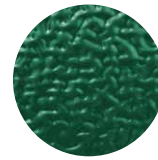
Stucco C17



Stucco RAL 3000



Stucco RAL 5010



Stucco RAL 6005



Stucco RAL 9006



Stucco RAL 7016

external
wood-like



Golden Oak



Walnut

Optional equipments

Floor track to be sunk in the floor.

Lacquering in standard colours on internal side, external side or both.

Lacquering in out of standard colours according to Breda's RAL sample-card colours/Micaceous.

Pedestrian door inserted on the wing with threshold, composed by a frame made of aluminium profiles black Sallox colour, with lock and handle (internal and external) or with anti-panic handle push-bar (3 locking points) with or without external handle and lock.

Traffic wing, with push-bar anti-panic handle (2 locking points) with or without external lock and handle. Coupled glazed inspection windows 5+5 with rubber EPDM gasket, round or rectangular with rounded corners .

Pre-lacquered aluminium ventilation grilles.

Mechanical devices

Single or Three-phased ventilated gear motor, CE marked, with thermal protection, permanent grease lubrication.

Equipped by magnetic limit switch, switch box for electrical connections, releasing device with lock for manual operations using a lever.

Driving gear with chain and pinion, engine power 370W (single phased) or 370W (three phased)

Opening and closing speed not higher than 8m/min. Motor fixed to track board.

Single or Three-Phased switchboard with open-close-stop pushbutton, CE marked, emergency button, protection degree IP 54, 230V or 380V power supply, torque-limiting device, adjustable limit switches. Drive to low-tension 24 V protected by 1,6 A and 2 A fuses, to be used also for power supply of all safety accessories. Possible functions: automatic, semi-automatic or "dead man" control; timer for automatic closing; stop and reversing system in case the photocells are working, or other devices. Door-closing safety device, padlock not included.

Further safety devices

Yellow beacon flashing light.

Pair of ultra flat high-sensitive photocells.

Outdoor key selector Open-Close-Stop.

Microswitch.

Unblocking lever with handle and lock.



twitter.com/@bredaportoni

facebook.com/BredaPortoni

instagram.com/BredaPortoni



youtube.com/BredaPortoni

breda@bredasys.com

www.bredasys.com