



Door opening up to 1 m/s:
the fastest sectional door
from Europe's no. 1

INDUSTRIAL SECTIONAL DOORS

NEW. Elegant and robust Plainrain "Matt fine structure" surface

HÖRMANN



4



22



36



Content

- 4 **Good reasons to try Hörmann**

- 24 **Application areas**
 - 24 Logistics and centres of commerce
 - 26 Warehouses and agricultural buildings
 - 28 Public buildings and fire brigades
 - 30 Workshops and car showrooms
 - 32 Underground and collective garages
 - 34 Prestigious buildings
 - 36 On-site cladding

- 38 **Technology, equipment, accessories**
 - 40 Section and frame versions
 - 42 Double-skinned steel sectional doors
 - 44 Glazed aluminium sectional doors with steel bottom section
 - 46 Glazed aluminium sectional doors
 - 48 Large glazed aluminium sectional doors
 - 50 Aluminium sectional doors for sophisticated architecture
 - 52 Aluminium sectional doors for on-site cladding
 - 54 Logistics doors
 - 56 Construction, equipment
 - 82 Operators, controls and accessories
 - 112 Technical data

Brand quality made in Germany



The family-owned company Hörmann offers all important construction components for building and renovating projects from a single source. We manufacture in highly specialised factories using state-of-the-art production technologies. Our employees work intensively on new products, continual further developments and improvements to details. The results are patents and one-of-a-kind products you can depend on.





With the code in the DGNB Navigator label, all product information can be easily accessed in the DGNB Navigator – here, for example, for our industrial sectional doors.

SUSTAINABILITY DOCUMENTED. We have had Environmental Product Declarations (EPD) drawn up by ift Rosenheim for our industrial sectional doors and many other products. The EPDs were created in accordance with ISO 14025 and EN 15804 and are listed in the EcoBudat of the Federal Ministry of Housing, Urban Development and Building (BMWSB). **NEW.** Hörmann also offers sustainability product passports (NHPP). These contain all the information required for DGNB certification, far exceeding the criteria of ENV1.1 and ENV1.2. This simplifies the certification process and keeps auditor costs low. The NHPPs are stored in the DGNB Navigator. Many of the Hörmann products listed there also fulfil the even more stringent requirements of the DGNB Navigator Label. Both the EPD and the DGNB Navigator labels are stored in the Hörmann ProductPortal.

→ Further information on the DGNB Navigator can be found at www.dgnb-navigator.de



WE THINK AND ACT GREEN. As a family business, we are very conscious of our responsibility to future generations and will offer all products for construction projects as CO₂-neutral versions upon customer request. In this way, customers have the option to offset remaining emissions and make a contribution to climate protection when purchasing our products. The Hörmann sustainability strategy aims to reduce and avoid emissions. We cover 100% of our electrical power needs at all European production sites with genuine green electricity from renewable sources. We also apply many other measures to reduce our consumption and save more than 75000 tonnes of CO₂ each year. We work with ClimatePartner to offset the remaining emissions by supporting certified climate protection projects.



You can find further information at www.hoermann.com/sustainability



ClimatePartner
certified product
climate-id.com/FYZNUF



CO₂
measure
reduce
contribute

Sustainable planning for trend-setting construction

Experienced specialists within our customer-oriented sales organisation accompany you from the planning stage, through technical clarification up to the final building inspection. Complete working documentation, such as technical manuals, is also always accessible and up-to-date at www.hoermann.de





product portal
For architects and planners



**PRODUCTS
FOR BIM**

We are a member of the professional association for digital building products in the Federal Association of Building Systems e.V.

QUICK AND EASY TO REACH YOUR DESTINATION. With a clear operating structure and search function, the ProductPortal offers you quick access to tender texts, technical data, certificates, CAD drawings and much more. In addition, BIM data can be provided for many products for the Building Information Modelling process, enabling efficient planning, drafting, construction and management of buildings. Photos and photo-realistic presentations provide additional information on many products.

→ Further information can be found at
<https://hbp.hoermann.com/uk/portal>



**NEW.
HoePlan**

NEW. CUSTOMISED DRAWING AT THE TOUCH OF A BUTTON.

With our digital tool, you receive a detailed, dimensioned drawing of the product in DWG format already included when the quotation is prepared. This simplifies and speeds up technical clarification and secures the entire ordering process.



**Energy saving
compass**

ENERGY-EFFICIENT AND SUSTAINABLY PLANNED.

Hörmann's Energy Saving Compass shows the enormous potential for saving energy when planning new buildings or modernising old door systems and loading sites. An integrated calculation module estimates the amortisation time for door and loading technology systems. The energy savings compass is available as a web-based interface for PC / Mac and mobile end devices.

→ Plan with the energy saving compass at
www.hoermann.de/energiesparkompass

Easy to fit and service

Precisely fitting connections, a small number of components and pressed-in bolts enable fast, precise fitting. In addition, the latest generation of industrial sectional doors can also be integrated into digital service and remote maintenance concepts. This lowers the maintenance and service costs, making Hörmann industrial sectional doors economical and sustainable.





**Service
around the clock**

FAST SERVICE. Our teams of highly qualified specialists travel all around Germany. But Hörmann also offers consulting, maintenance and repairs in many other countries. Our network of over 500 service technicians guarantees speed and flexibility. We are available around the clock. Our customers can rely on us.



**10-year
guaranteed
availability**

HÖRMANN SPARE PARTS. It goes without saying that spare parts for doors, operators, and controls are original Hörmann parts that come with a guaranteed availability of 10 years.



BlueControl

SMART GATE SETTING. Initial start-up, service and maintenance of industrial doors is easy and convenient with the BlueControl app.



NetControl

INTELLIGENT NETWORKING. The NetControl gateway displays important information about the doors, such as status, error messages, cycles, opening duration and maintenance instructions. This reduces costs for service visits and prevents downtime through preventive replacement of wear parts – for robust logistics processes concerning your door system.

→ Further information can be found starting on page 94.



Durable construction

Ball bearing mounted rollers, stable slat connections and optimum counterbalance enable up to 50000 operations* – up to 200000 with special equipment. The optional plastic frame shoe also provides the frame with lasting protection against corrosion.





Only from Hörmann

Double radius of 510 mm

LOW-WEAR DOOR TRAVEL. The frame construction with a large double radius and optimally dimensioned rollers is gentle on all mechanical door elements.



Only from Hörmann

Twin rollers on the top door section

QUIET OPENING AND CLOSING. The standard twin rollers **1** on the top section ensure quiet door travel, especially during closing. With optional 2-component rollers **2** travel noises are reduced by up to an additional 5 dB(A). This is a decisive advantage not only for doors in residential buildings.



Only from Hörmann

Plastic frame shoe

CORROSION PROTECTION. The optional fibreglass-reinforced plastic frame shoe **3** prevents the frame from coming into direct contact with moisture on the floor and provides lasting protection against corrosion. Together with the door's bottom seal, the frame shoe makes for a bottom edge that is visually appealing.

→ Further information can be found starting on page 56.

* 50000 actuations for track application H and V, for track application N and L 25000 actuations and for track application Z 20000 actuations

Energy-saving Drive comfort

With fast door operators, you save valuable energy and speed up your work processes.

Depending on your requirements in terms of performance, speed and convenience, we offer you perfectly customised drive solutions with matching safety security features, operating aids and signal transmitters. This optimises the work processes within your company – an investment that quickly pays for itself.





Soft start
Soft stop



Opening speed
up to 1.0 m/s



approx. 80%
less electricity costs*

* Power consumption in energy saving mode without connected accessories: less than 2 W/h

TURBO-FAST DOOR OPENING. Shaft operator WA 500 FU impresses with an opening speed of up to 1 m/s, speeding up logistics processes and reducing thermal losses. In addition, the frequency converter control with soft start and soft stop takes the stress off all mechanical door elements, guaranteeing quiet door travel. With the ITO 500 FU operator developed especially for underground garages, the door achieves an opening speed of up to 0.5 m/s.

- For further information, see page 86 onwards.
- Watch the short film “Speed comparison” on YouTube or www.hormann.co.uk/media-centre

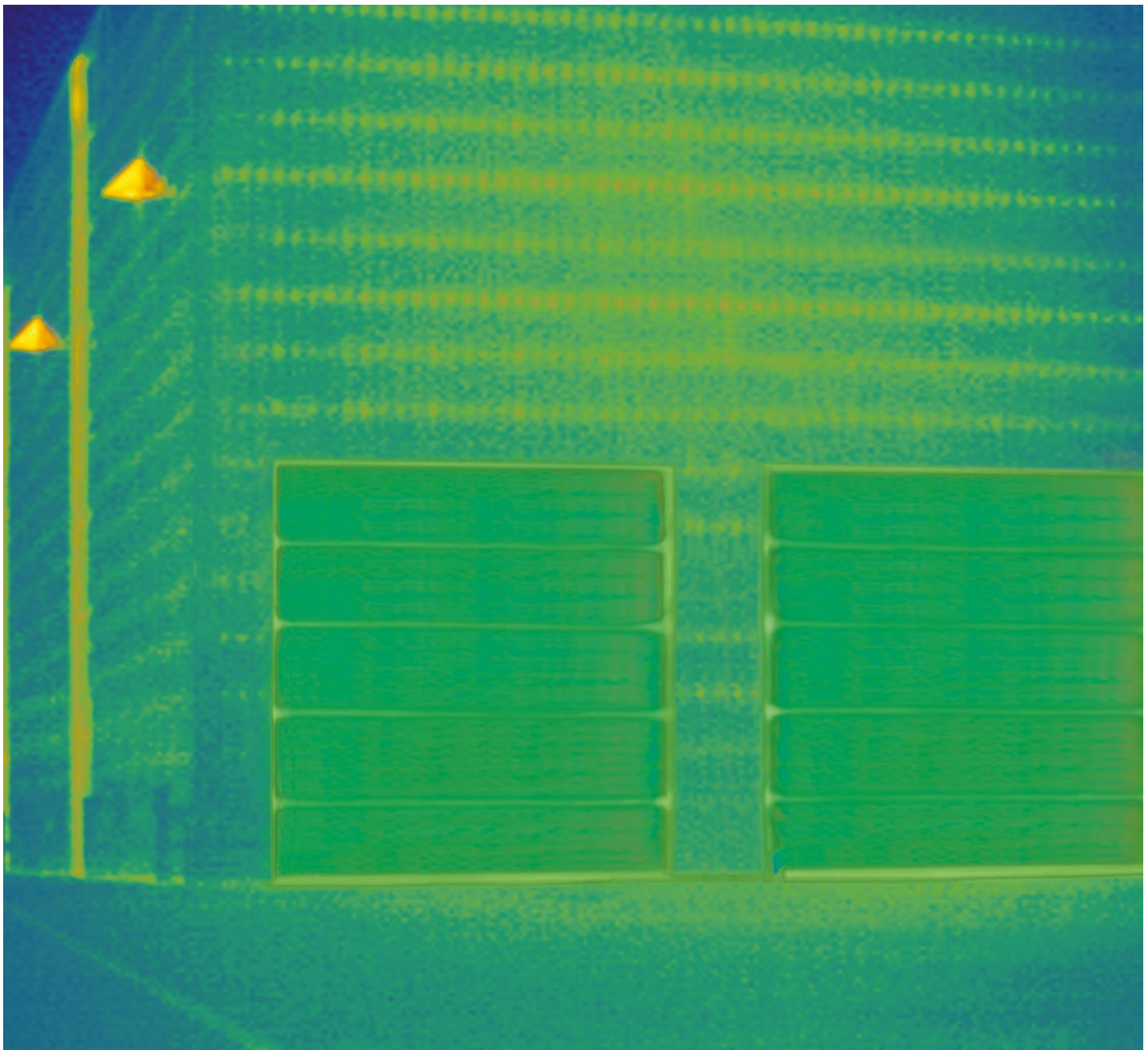


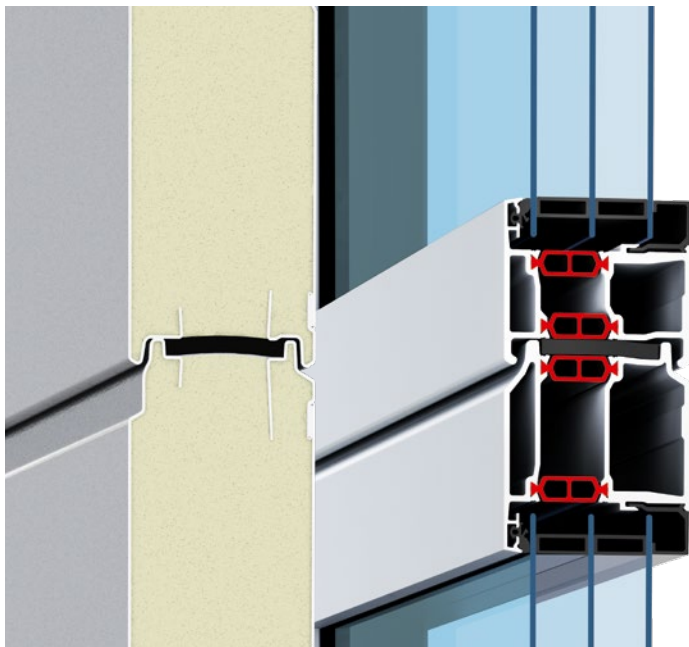
NON-CONTACT SAFETY. Efficient monitoring of the closing edge increases safety. The WA 500, WA 500 FU and ITO 500 FU operators are optionally equipped with the VL1-LE leading photocell at no surcharge. It responds to movements and obstacles without any contact, reliably stopping the door if necessary.

- Further information can be found starting on page 98.

Energy-saving detailed solutions

Industrial doors with thermally broken sections and ThermoFrame frame connection offer high thermal insulation and low energy losses. High-quality seals on the side frames and lintel as well as the base seal with double chamber reduce air permeability as standard. Further details such as optional ribbing infill, corner seals and lintel counter seal achieve even better air-tightness.



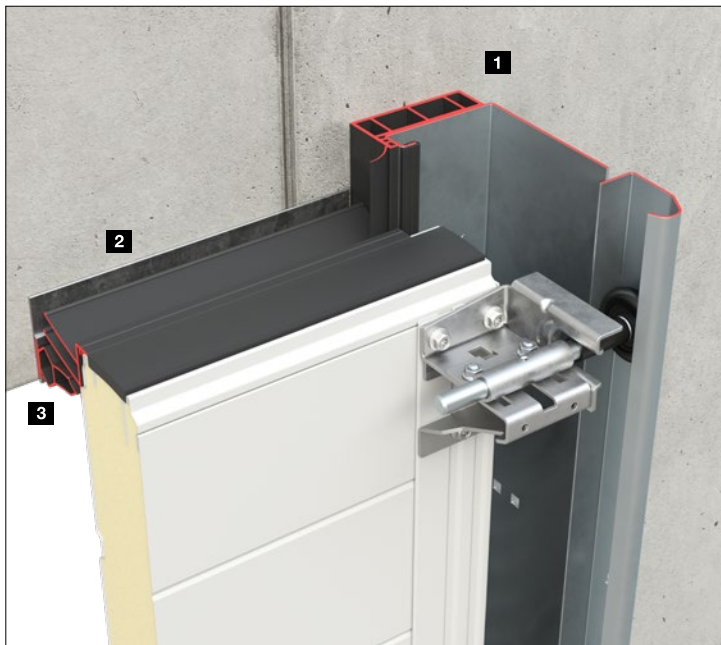


Best thermal insulation

U-value of up to 0.51 W/(m²·K)

ENERGY-SAVING DOORS. The standard thermally broken steel sectional doors and aluminium sectional doors with a depth of 67 mm impress with their excellent thermal insulation and thus save valuable energy costs. With optional quadruple panes or climatic glass, the thermal insulation value can be increased even further.

→ Further information can be found starting on page 40.



Up to 21%

better thermal insulation¹⁾

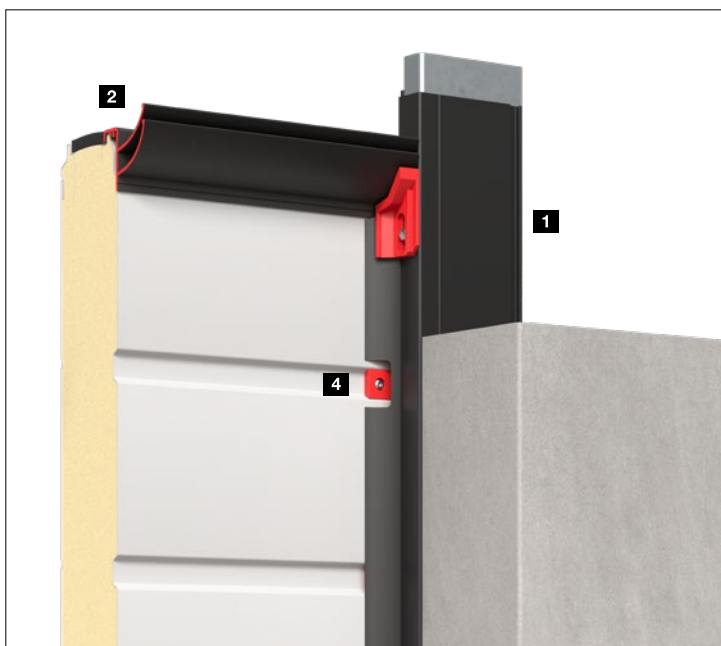


up to class 4

low air permeability²⁾

ENERGY-SAVING EQUIPMENT. The optional ThermoFrame 26 **1** for relining and thermal break between door frame and brickwork as well as double seals on the lintel **2** improve the thermal insulation and airtightness of your doors. Details such as the additional lintel back seal **3** and optional infill panels **4** also reduce energy losses – especially in changing climatic conditions.

→ Further information can be found on page 78.



¹⁾ SPU 67 Thermo without glazing with optional ThermoFrame for a door surface of 3000 × 3000 mm

²⁾ SPU 67 Thermo without glazing with optional ThermoFrame and the "increased air-tightness" set

TOP: SPU 67 Thermo (left ill.) and ALR 67 Thermo (right image)

CENTRE: Viewed from outside

BOTTOM: Viewed from inside

Perfect transparency

Aluminium frame doors lend buildings more light and an elegant appearance.

The standard Duratec synthetic glazing offers a permanently clear view, and the matching aluminium profiles convince with a harmonious overall appearance.

This also applies to the combination of doors with different depths. This way, your company will always be seen at its best.





Duratec
Highly scratch-resistant
synthetic glazing

PERMANENTLY CLEAR VIEW. A special high-quality coating, similar to that used on car headlights, protects the Duratec synthetic glazing from scratches and damage caused by cleaning over the long term. This preserves the attractive appearance despite heavy use in tough industrial settings. The Duratec glazing is available as standard for all sectional doors with clear synthetic glazing.

→ Watch the short film “Duratec” on YouTube or www.hormann.co.uk/media-centre

HARMONIOUS DESIGN. Sectional doors, doors with wicket door, side doors and panels are designed in such a way that all elements present a harmonious overall appearance when fitted in a line of buildings. The rails of the aluminium glazing frames are arranged in a matching appearance – for both standard and thermally broken profiles as well as for depth 42 and depth 67.

Equipment for more safety and comfort

We offer you a wide range of optional equipment, allowing you to easily tailor each door to your requirements. For example, a wicket door with trip-free threshold for convenient passage. Additional security is provided by optional adjustable turn and shootbolts, also in combination with an outside handle, to lock the door securely and open it conveniently from the outside, or the RC2 security features.





Only from Hörmann
Anti-lift kit on both sides



**Anti-lift kit
as standard**



**Optionally with RC2-
security features**
Tested and certified



Extra flat threshold



Escape door



Unobstructed entrance

RELIABLE BREAK-IN RESISTANCE EQUIPMENT.

The standard anti-lift kit functions mechanically and thus effectively protects your goods and machines during power outages. As an option, SPU doors are also available with or without a wicket door and matching side doors in a tested and certified RC2 security version (for depths of 42 mm and 67 mm).

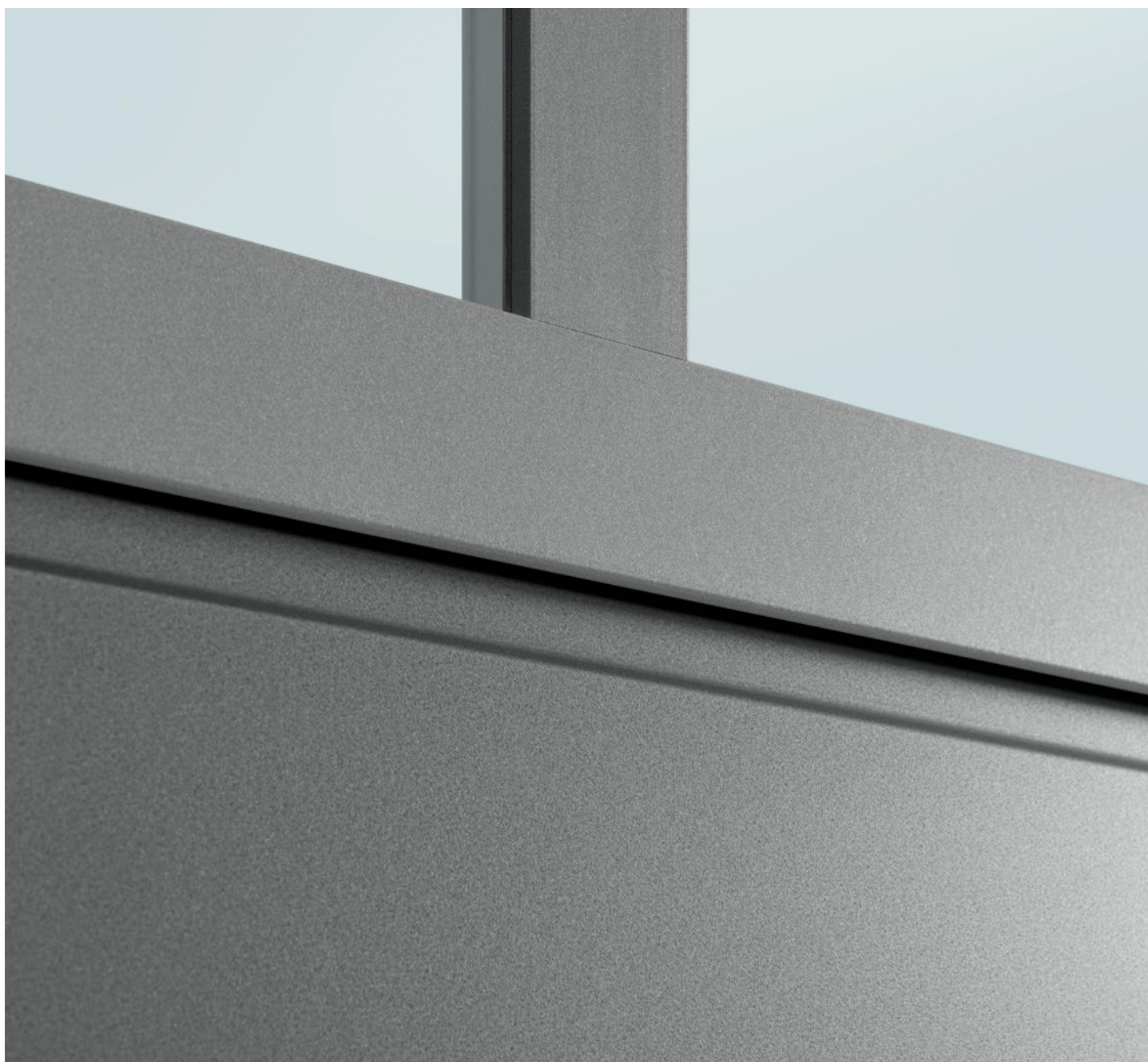
→ Further information can be found on page 79.

COMFORTABLE AND SAFE WORKING. The extra-flat stainless steel threshold for wicket doors (fig. left) makes working easier and reduces accidents. It reduces the risk of tripping and makes it considerably easier for slide carriages to pass through. Under certain circumstances, wicket doors with trip-free threshold can even be used as escape doors and unobstructed entrances.

→ Further information can be found starting on page 64.

NEW. Plaingrain surface “Matt fine structure”

This new colour coating combines an elegant look with a high-quality feel. The matt look gives the preferred colours “Matt fine structure” a modern appearance and at the same time reduces light reflection on the surface. Fine structural particles increase robustness as well as scratch and impact resistance.





**NEW. Environmentally friendly,
water-based paint**

ALUMINIUM FRAME. The high-quality wet paint coating “Matt fine structure” in traffic white RAL 9016, Grey aluminium RAL 9007, White aluminium RAL 9006, Anthracite grey RAL 7016 or Anthracite metallic CH 703 ensures excellent surface quality and long-lasting durability. The profiles blend harmoniously into modern architectural concepts and offer an elegant, high-quality feel.

STEEL SECTIONS. The Plaingrain “Matt fine structure” surface impresses with its calm, finely textured appearance and its high-quality coil coating. For a modern, architectural colour effect, the sections are available in the preferred colours Traffic white RAL 9016, Grey aluminium RAL 9007, White aluminium RAL 9006, Anthracite grey RAL 7016. On request, we offer a complete “matt fine structure” wet paint coating in traffic white RAL 9016, Grey aluminium RAL 9007, White aluminium RAL 9006, Anthracite grey RAL 7016 or Anthracite metallic CH 703, which enables a 100% matching appearance with our aluminium frames. This creates a harmonious overall look – regardless of the material.

→ For further information, see from page 71.

Customised Door solutions

These space-saving door systems can be adapted to different building architectures using various track applications. This gives you planning reliability when building a new facility or renovating. Hörmann offers you customised solutions: special doors for logistics companies, underground car park doors, Vitraplan doors with exclusive glazing or matching façade panels as well as doors for integration into façades with a flush-fitting design.





Only from Hörmann

FULL CLEARANCE HEIGHT. With the right door version and size, the low headroom track application with swivel mechanism can achieve the full door height as the clear passage height with just 200 mm of required headroom. This is especially advantageous in underground garages.

SUITABLE MOUNTING SOLUTIONS. With more than 30 track applications, industrial sectional doors can be optimally matched to the requirements of your building. Detailed solutions such as low-mounted spring shafts or adjustable components additionally facilitate maintenance and make the doors especially service-friendly. **NEW.** The tension spring track application is particularly recommended as a manually operated door, for example for warehouses with low opening frequencies.

→ Further information can be found starting on page 60.



Further information on loading technology can be found in the brochure.





TOP LEFT. SPU 67 Thermo in combination with Hörmann loading houses, DOBO dock levellers and inflatable dock seals for use in food and cold logistics

TOP RIGHT. SPU F42 Parcel for loading and unloading lorries and vans at a loading station

BOTTOM. SPU 67 Thermo with good thermal insulation for heated halls and **NEW**. with elegant Plaingrain "matt fine structure" surface



Logistics and centres of commerce

Hörmann industrial sectional doors and operators are optimally matched to Hörmann loading technology. You therefore receive a logistics solution that perfectly matches your requirements in terms of thermal efficiency and functions. Double-skinned sectional doors SPU F42 / SPU 67 Thermo are recommended for heated buildings to minimise energy losses as far as possible.

SPU F42 / APU F42 Parcel was especially developed for parcel services.

→ Further information on the SPU F42 / SPU 67 Thermo can be found from page 42 onwards.

→ Further information on the SPU F42 / APU F42 Parcel can be found from page 54 onwards.

Warehouses and agricultural buildings

The robust sectional doors are designed for the tough everyday conditions in industrial, commercial and agricultural applications. An easy and safe pedestrian passage is provided by a wicket door without a threshold rail.

→ Further information can be found starting on page 64.





TOP. SPU F42 with wicket door without threshold rail for easy passage of people pedestrian passage

BOTTOM LEFT. **NEW.** SPU F42 with elegant Plaingrain "Matt fine structure" surface

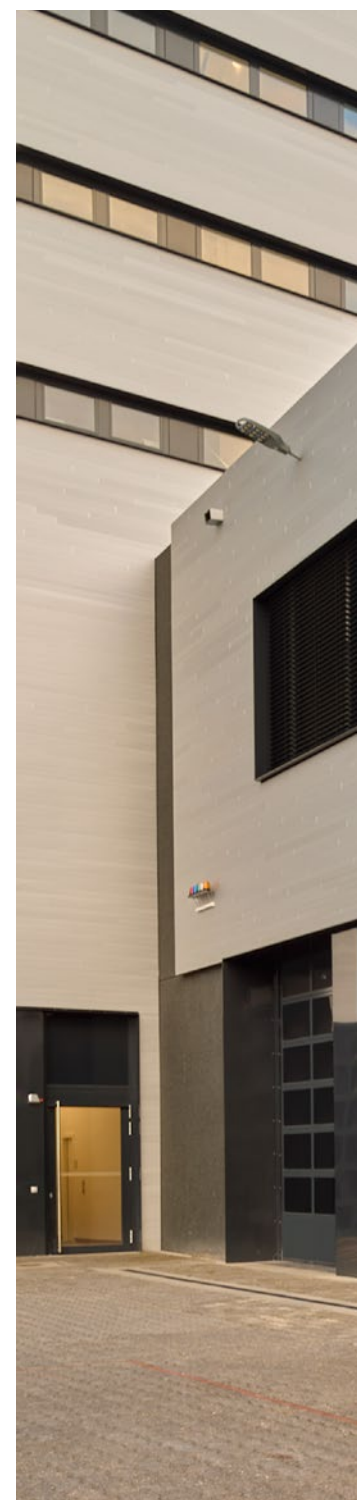
BOTTOM RIGHT. SPU F42



Public buildings and fire brigades

Large-area glazing provides plenty of light in the hall and, thanks to the Duratec glazing that comes as standard a permanently clear view. The PU-foamed steel bottom section of the APU F42 / APU 67 Thermo is cost-effective and insensitive to soiling.

→ Further information on the APU F42 / APU 67 Thermo can be found from page 44 onwards.





TOP LEFT. APU 67 Thermo with high thermal insulation and robust steel bottom section and aluminium glazing frames

TOP RIGHT. SPU 67 Thermo with aluminium glazing frame

BOTTOM. **NEW.** APU 67 Thermo with steel bottom section and aluminium glazing frames in "matt fine structure" for a modern door look





TOP. ALR F42 with fully glazed panels for light in the float zone; matching appearance top panel, fixed side panel and side door NT 60

BOTTOM LEFT. ALR F42 with wicket door for convenient pedestrian passage

BOTTOM CENTRE. ALR 67 Thermo Glazing with real glass panes; matching appearance side door NT 60 with top panel and fixed side element

BOTTOM RIGHT. **NEW.** APU F42 in "matt fine structure" for a harmonious door appearance





Workshops and car showrooms

Thanks to large glazings made of real glass, the ALR F42 Glazing becomes a display window, attracting potential customers. The standard Duratec synthetic glazing in the ALR F42 / ALR 67 Thermo ensures a permanently clear view. A wicket door with trip-free threshold offers service-friendly passage.

- Further information on ALR F42 / ALR 67 Thermo / ALR F42 Glazing / ALR 67 Thermo Glazing can be found from page 46 onwards.
- Further information on the wicket door without a threshold rail can be found from page 64 onwards.





TOP LEFT. ALR F42 with on-site grille plates

TOP RIGHT. ALR F42 with expanded mesh infill

BOTTOM. ALR F42 with expanded metal infill; Hörmann SH 100 barrier with barrier oval boom, LED lighting strips and R-Loop radar sensor



Further information on barriers and parking space management systems can be found in the brochure.



Underground and collective garages

From collective garages in hotels to underground car parks in shopping centres and to inner-city car parks – Hörmann offers coordinated systems consisting of doors, operators and a comprehensive range of accessories especially for these application areas, as well as economical solutions for barrier systems and future-oriented parking space management systems.

→ You will find more information on operators and accessories from page 82.

Prestigious buildings

Doors with exclusive glazing impress with an engaging mix of reflection and transparency. Matching facade panels can be used for the door surface to create a harmonious overall appearance. Hörmann offers ideal door solutions for sophisticated architecture.

→ Further information on the ALR F42 Vitraplan and ALR F42 Vitraplan AT can be found from page 50 onwards.





TOP. ALR F42 Vitraplan AT with façade panels in special version

BOTTOM LEFT. ALR F42 Vitraplan with grey tinted glazing

BOTTOM RIGHT. ALR F42 Vitraplan AT with modern façade panels
ALUCOBOND® naturAL Reflect 405

On-site cladding

Design your sectional door according to your wishes with timber, metal, ceramics, plastic and many other materials. The industrial sectional door ALR F42 with aluminium frame construction and PU sandwich infill forms the basis for the facade cladding.

→ Further information on the ALR F42 for on-site cladding can be found from page 52 onwards.





TOP RIGHT. ALR F42 with on-site flush-fitting cladding made of laminated material board

BOTTOM. ALR F42 with on-site flush-fitting cladding made of aluminium composite panels





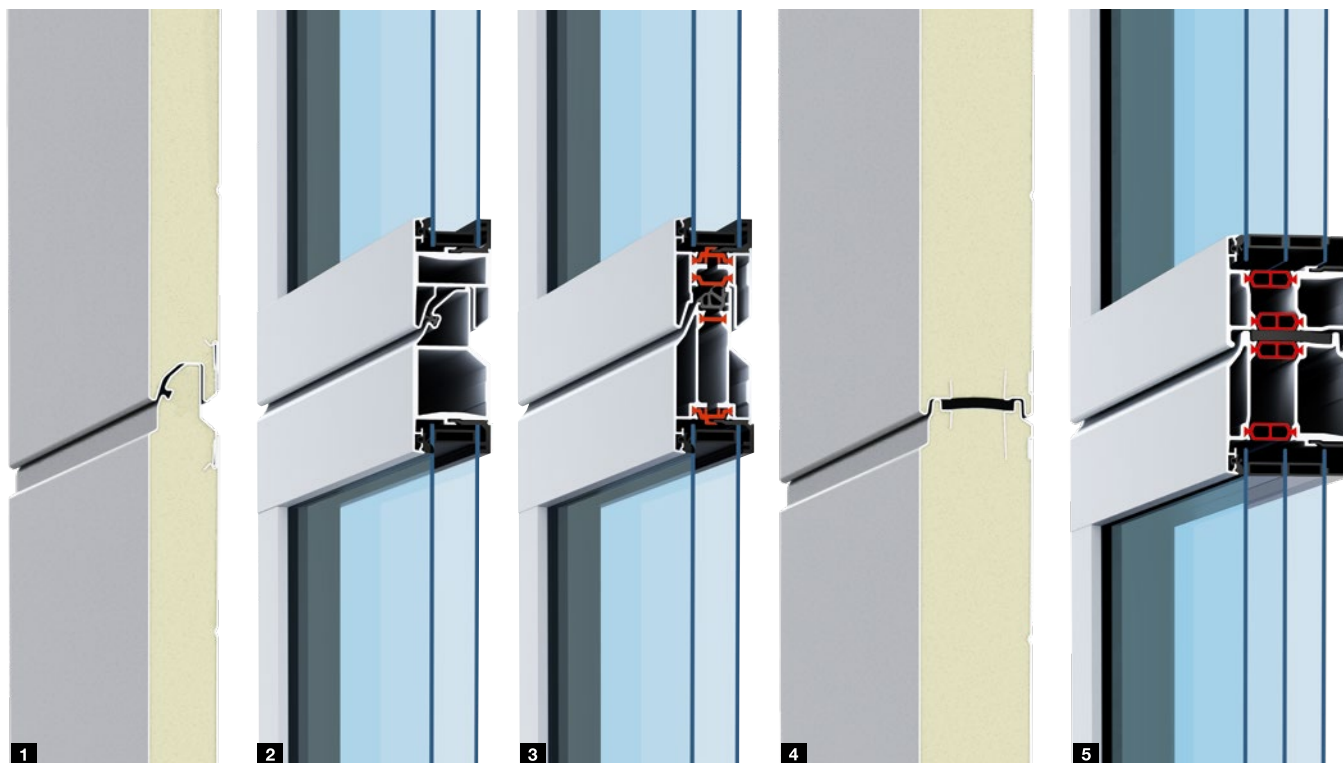


Technology Equipment Accessories

- 40 Section and frame versions
- 42 Double-skinned steel sectional doors
- 44 Glazed aluminium sectional doors with steel bottom section
- 46 Glazed aluminium sectional doors
- 48 Large glazed aluminium sectional doors
- 50 Aluminium sectional doors for sophisticated architecture
- 52 Aluminium sectional doors for on-site cladding
- 54 Logistics doors
- 56 Construction, equipment
- 64 Wicket doors with trip-free threshold
- 66 Side doors
- 70 Individual colour schemes
- 74 Glazings and infills
- 78 Optional energy-saving equipment
- 79 Security features
- 81 Operating options for manually operated doors
- 82 Operators, controls and accessories
- 112 Technical data

Section and frame versions

Overview



42 mm depth

The steel sections **1** and aluminium frame **2** provide good thermal insulation. In case of higher thermal insulation and maximum transparency requirements, we recommend doors with an aluminium frame with thermal break **3**.

67 mm depth

The standard thermally broken steel sections **4** and aluminium frame **5** impress with excellent thermal insulation and also reduce the formation of condensation on the inside of the door. The doors are available up to a width of 10 metres.

Steel sections **1 4**

The double-skinned PU-foamed sections are particularly robust and optimally protected against adverse weather effects thanks to the hot-galvanized steel surface with high-quality coating. They are used in steel sectional doors and glazed aluminium frame doors with steel bottom section.

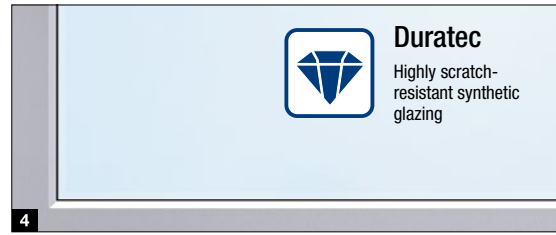
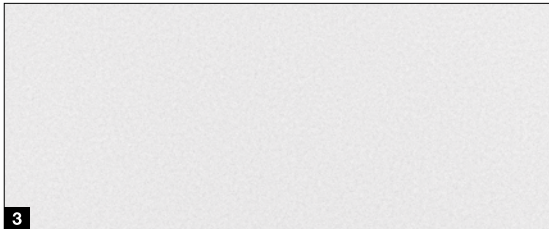
Aluminium frame **2 3 5**

The aluminium frames are made of high-quality extruded profiles. They are used in glazed aluminium frame doors and as a glazing element in steel sectional doors.



Matching appearance
In both depths

Both depths can be combined depending on the requirements of the property as the door view has a 100% matching appearance.



Stucco surface **1**

The resistant Stucco surface finish offers uniform ribbing every 125 mm in the section and in the section transition. Minor scratches and traces of dirt are harder to notice on this surface finish.

Micrograin surface **2**

The elegant Micrograin surface finish is smooth and features a characteristic fine line pattern. This surface finish harmonises especially well with modern facades that are characterised by their clear design.

NEW. Plainrain surface **3**

The “matt fine structure” surface gives the door a modern appearance and harmonises well with the combination of steel slat and aluminium frame*.

Glazings **4**

The standard double (with 42 mm depth) or triple (with 67 mm depth) Duratec synthetic glazing offers maximum scratch resistance and good thermal insulation. In case of higher thermal insulation requirements, we recommend quadruple glazings or climatic double panes.

PU infills **5**

The double-skinned PU infills are particularly suitable as a robust infill for the lower door section of glazed framed doors.

Grid fillings **6**

For collective garages, expanded meshes or perforated sheet infills provide optimal ventilation. For a uniform door appearance, the PU infills and mesh infills are available in the same colour as the door on request.

→ Further information can be found starting on page 74.

→ Further information can be found starting on page 70.

* 100% identical view only with continuous wet paint coating

Double-skinned steel sectional doors

SPU F42 / SPU 67 Thermo



Matching appearance

In both depths

- Robust PU-foamed steel slats
- steel sections
- Optional section window or aluminium glazing frame
- Good thermal insulation with the SPU F42
- Best thermal insulation with the SPU 67 Thermo with thermally separated sections



Door type

SPU F42

SPU 67 Thermo

	Without wicket door	With wicket door	Without wicket door	With wicket door
Door size				
Max. width (mm)	8000	7000	10000	7000
Max. height (mm)	7500	7500	8000	8000
Construction				
Depth (mm)	42	42	67	67
Steel sections	●	●	-	-
Thermally separated steel sections	-	-	●	●
Aluminium frame	○	○	-	-
Thermally separated aluminium frame	○	○	○	○
Thermal insulation EN 13241, Appendix B EN 12428				
U-value in W/(m ² ·K) for a door surface of 5000 × 5000 mm				
Closed sectional door	1.0	1.2	0.62	0.82
With ThermoFrame	0.94	1.2	0.51	0.75
Section	0.50	0.50	0.33	0.33

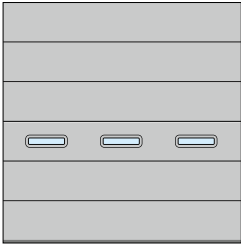
● = As standard

○ = Optionally as glazing

- = Not available

Example door versions

Door width up to 4500 mm
(example 4500 × 4500 mm)



SPU F42, SPU 67 Thermo
Louvre window type F
(RC2 door version possible),
Uniform field division

Door width up to 5500 mm
(example 5500 × 4500 mm)

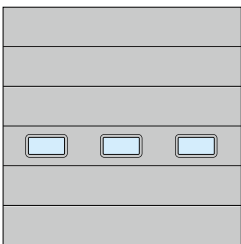


SPU F42, SPU 67 Thermo
Section window type D
Wicket door arrangement on the left

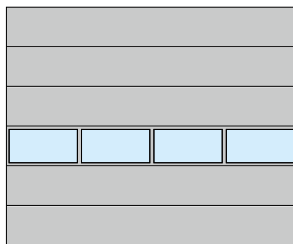
Door width over 5500 mm
(example 7000 × 4500 mm)



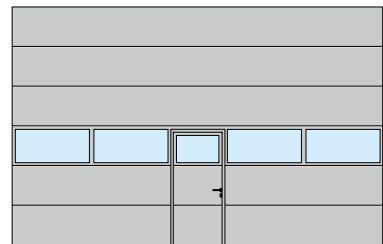
SPU F42, SPU 67 Thermo
Section window type A



SPU F42, SPU 67 Thermo
Section window type E
Uniform field division



SPU F42, SPU 67 Thermo
Aluminium glazing frame
Uniform field division



SPU F42, SPU 67 Thermo
Aluminium glazing frame
Wicket door arrangement in the centre

Notice

The SPU F42 Plus is available in numerous door styles on request and finishes like Hörmann sectional garage doors.

Clear passage width (LDB) Wicket door
SPU F42: 940 mm
SPU 67 Thermo: 905 mm

Robust surfaces

The steel sections are designed for robust everyday use in industry, trade and logistics.

The choice of three surfaces: Stucco **1**, Micrograin **2** and **NEW**. Plaingrain **3** offer customised design options.



Glazed aluminium sectional doors with bottom section

APU F42, APU F42 Thermo, APU 67 Thermo



Matching appearance

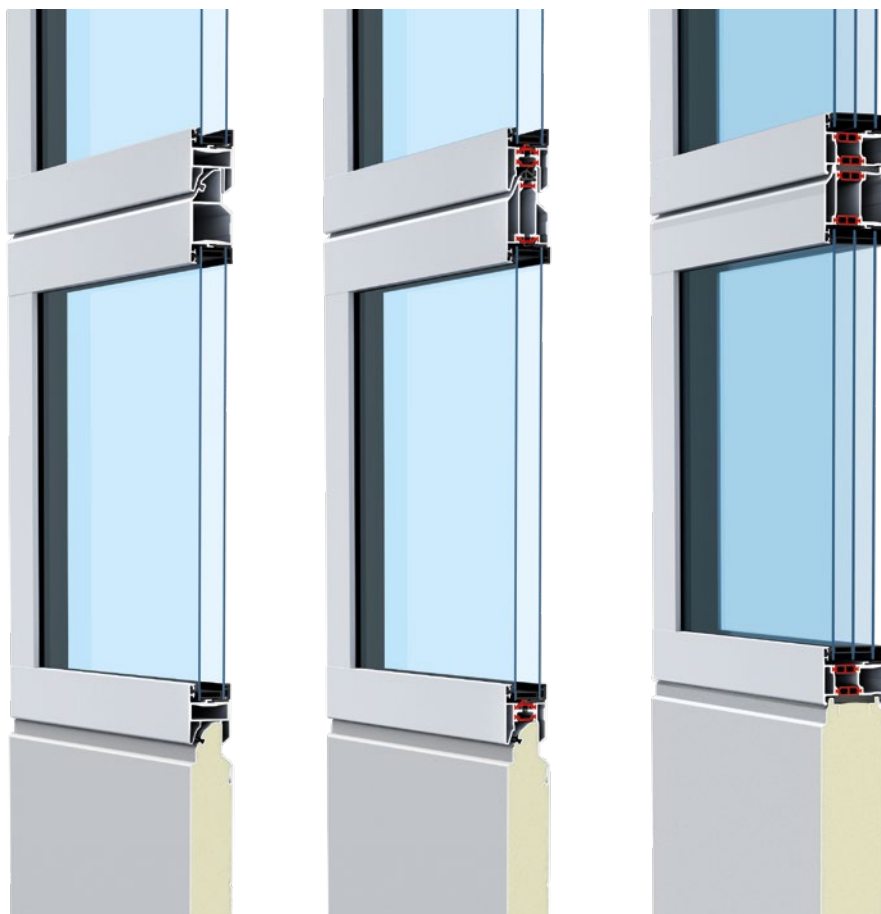
In both depths



Duratec

Highly scratch-resistant synthetic glazing

- Extensive aluminium glazing frame
- Robust 750 mm high PU-foamed steel bottom section
- Good thermal insulation with the APU F42
- Very good thermal insulation with the APU F42 Thermo with thermally separated sections
- Best thermal insulation with the APU 67 Thermo with thermally separated sections



Door type	APU F42		APU F42 Thermo		APU 67 Thermo	
	Without wicket door	with wicket door	Without wicket door	with wicket door	Without wicket door	with wicket door
Door size						
Max. width (mm)	8000	7000	7000	7000	10000	7000
Max. height (mm)	7500	7500	7500	7500	8000	8000

Construction

Depth (mm)	42	42	42	42	67	67
Steel sections	■	■	■	■	-	-
Thermally separated steel sections	-	-	-	-	■	■
Aluminium frame	●	●	-	-	-	-
Thermally separated aluminium frame	-	-	●	●	●	●

Thermal insulation EN 13241, Appendix B EN 12428

U-value in W/(m²·K) for a door surface of 5000 × 5000 mm

Standard double pane	3.4	3.6	2.9	3.1	-	-
With ThermoFrame	3.3	3.6	2.8	3.1	-	-
Standard triple pane	-	-	-	-	2.1	2.3
With ThermoFrame	-	-	-	-	2.0	2.2
Optional double climatic pane, single-pane safety glass	2.5	2.7	2.0	2.2	1.6	1.8
With ThermoFrame	2.4	2.6	1.9	2.1	1.5	1.7

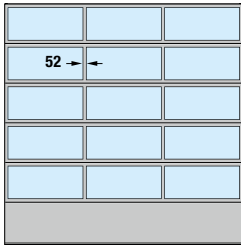
● = As standard

■ = As floor section as standard

- = Not available

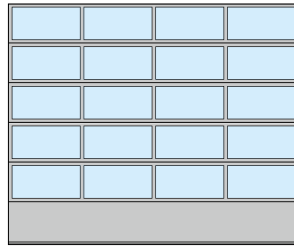
Example door versions

Door width up to 4500 mm
(example 4500 × 4500 mm)



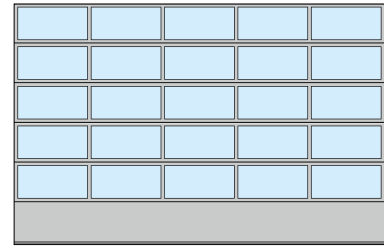
APU F42, APU F42 Thermo,
APU 67 Thermo
Uniform field division

Door width up to 5500 mm
(example 5500 × 4500 mm)

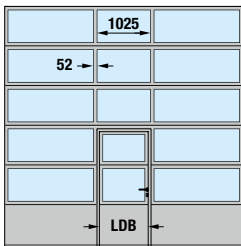


APU F42, APU F42 Thermo,
APU 67 Thermo
Uniform field division

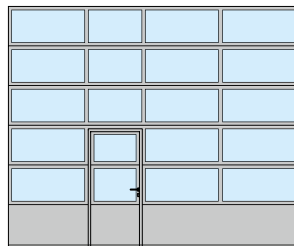
Door width over 5500 mm
(example 7000 × 4500 mm)



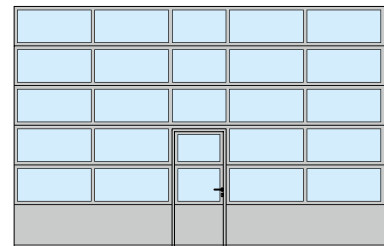
APU F42, APU F42 Thermo,
APU 67 Thermo
Uniform field division



APU F42, APU F42 Thermo,
APU 67 Thermo
Wicket door arrangement in the centre



APU F42, APU F42 Thermo,
APU 67 Thermo
Wicket door arrangement on the left



APU F42, APU F42 Thermo,
APU 67 Thermo
Wicket door arrangement in the centre

Notice

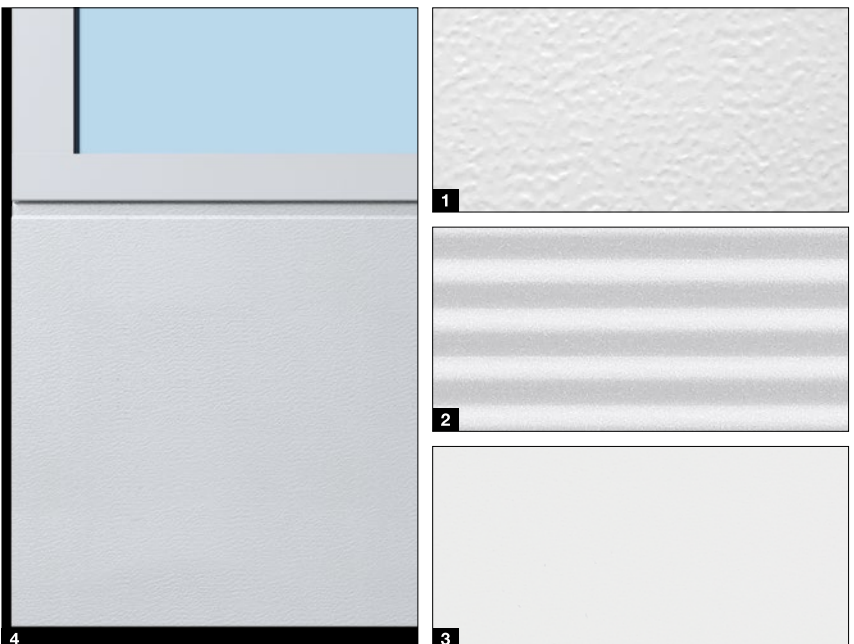
On request, uniform field division is also possible with wicket door. The field division of the wicket door arrangement is also available for sectional doors without wicket door. For modernisation or if you want to ensure a matching appearance to existing sectional doors, the APU F42 and the APU F42 Thermo are also available and the APU F42 Thermo are also available with 91 mm wide rails.

Clear passage width (LDB) Wicket door
APU F42, APU F42 Thermo: 940 mm
APU 67 Thermo: 905 mm

Particularly easy to service and repair-friendly

The louvre base can be replaced easily and cost-effectively in the event of major damage. Choose from the surfaces Stucco **1**, Micrograin **2** and **NEW**. Plainrain **3** “Matt fine structure”, which impresses with a uniform door appearance* of steel sections and aluminium glazing frames **4**.

* 100% identical view only with continuous wet paint coating



Glazed aluminium sectional doors

ALR F42, ALR F42 Thermo, ALR 67 Thermo



Matching appearance

In both depths



Duratec

Highly scratch-resistant synthetic glazing

- Extensive aluminium glazing frame
- Good thermal insulation with the ALR F42
- Very good thermal insulation with the ALR F42 Thermo with thermally separated sections
- Best thermal insulation with the ALR 67 Thermo with thermally separated sections



Door type

ALR F42

ALR F42 Thermo

ALR 67 Thermo

	Without wicket door	with wicket door	Without wicket door	with wicket door	Without wicket door	with wicket door
Door size						
Max. width (mm)	8000	7000	7000	7000	10000	7000
Max. height (mm)	7500	7500	7500	7500	8000	8000

Construction

Depth (mm)	42	42	42	42	67	67
Steel sections	-	-	-	-	-	-
Thermally separated steel sections	-	-	-	-	-	-
Aluminium frame	●	●	-	-	-	-
Thermally separated aluminium frame	-	-	●	●	●	●

Thermal insulation EN 13241. Appendix B EN 12428

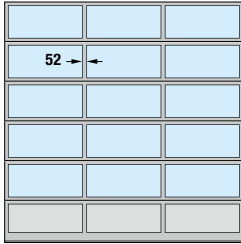
U-value in W/(m²·K) for a door surface of 5000 × 5000 mm

Standard double pane	3.6	3.8	3.0	3.2	-	-
With ThermoFrame	3.6	3.8	3.0	3.2	-	-
Standard triple pane	-	-	-	-	2.2	2.4
With ThermoFrame	-	-	-	-	2.1	2.3
Optional double climatic pane. single-pane safety glass	2.7	2.9	2.1	2.3	1.7	1.9
With ThermoFrame	2.6	2.8	2.0	2.2	1.6	1.8

- = As standard
- = Not available

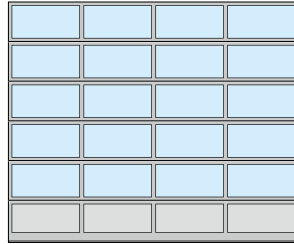
Example door versions

Door width up to 4500 mm
(example 4500 × 4500 mm)



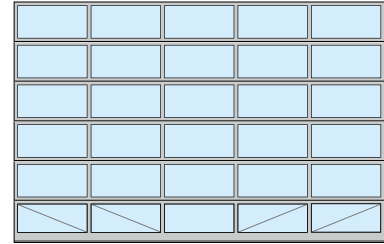
ALR F42, ALR F42 Thermo, ALR 67 Thermo
Uniform field division

Door width up to 5500 mm
(example 5500 × 4500 mm)

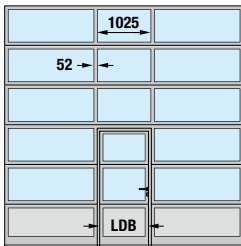


ALR F42, ALR F42 Thermo, ALR 67 Thermo
Uniform field division

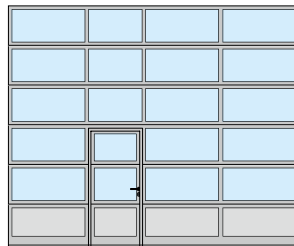
Door width over 5500 mm
(example 7000 × 4500 mm)



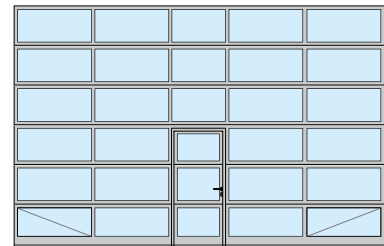
ALR F42, ALR F42 Thermo, ALR 67 Thermo
Uniform field division, fully glazed



ALR F42, ALR F42 Thermo, ALR 67 Thermo
Wicket door arrangement in the centre



ALR F42, ALR F42 Thermo, ALR 67 Thermo
Wicket door arrangement on the left



ALR F42, ALR F42 Thermo, ALR 67 Thermo
Wicket door arrangement in the centre,
fully glazed

Notice

On request, uniform field division is also possible with wicket door. The field division of the wicket door arrangement is also available for doors without wicket door. For modernisation or when the matching appearance of the existing sectional doors must be ensured, the ALR F42 / ALR F42 Thermo are also available with 91 mm wide rails. Of course, individual arrangements of the glass and panel infills or full glazing are also possible.

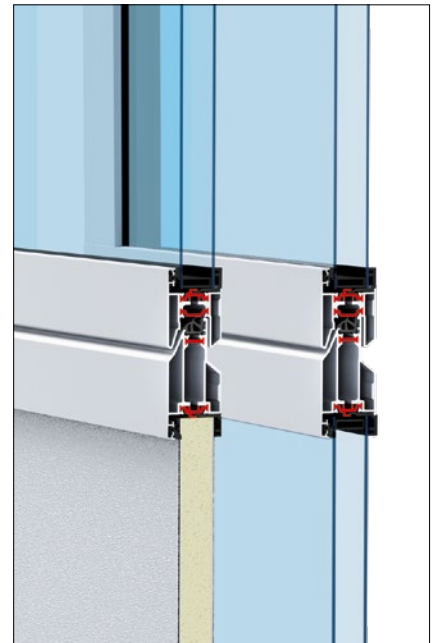
For improved stability, the lower window sections on the inside of fully glazed doors (from a door width of 5510 mm) and doors with real glass and wicket door (from a door width of 4510 mm) are fitted with diagonal structural struts.

Clear passage width (LDB) Wicket door
ALR F42, ALR F42 Thermo: 940 mm
ALR 67 Thermo: 905 mm

Optional infills

We deliver the bottom door section as standard with PU sandwich infill, both sides Stucco-textured. The door is optionally available fully glazed for maximum transparency at no surcharge. Additional glazing variants, sandwich infills and ventilation grilles are available depending on your requirements.

→ Further information can be found starting on page 74.



Aluminium sectional doors with extensive glazing

ALR F42 Glazing, ALR 67 Thermo Glazing



Matching appearance

In both depths



Real glass

- Display window door for an unimpeded view into showrooms
- Continuous window sections, without vertical rails up to 3330 mm door width
- Evenly divided window sections
- Good thermal insulation with ALR F42 Glazing
- Best thermal insulation with the ALR 67 Thermo with thermally separated aluminium glazing frames



Door type	ALR F42 Glazing	ALR F67 Thermo Glazing
-----------	-----------------	------------------------

Door size

Max. width (mm)	5500	5500
Max. height (mm)	4000	4000

Construction

Depth (mm)	42	67
Steel sections	-	-
Thermally separated steel sections	-	-
Aluminium frame	●	-
Thermally separated aluminium frame	-	●

Thermal insulation EN 13241, Appendix B EN 12428

U-value in W/(m²·K) for a door surface of 5000 × 5000 mm

Standard single pane, laminated safety glass	6.1	-
Standard double pane, single-pane safety glass	-	3.0
With ThermoFrame	-	2.9
Optional double climatic pane, single-pane safety glass	2.7	1.8
With ThermoFrame	2.6	1.7

- = As standard
- = Not available

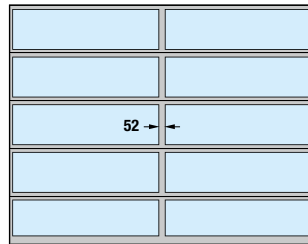
Example door versions

Door width up to 3330 mm
(Example 3300 × 3500 mm)



ALR F42 Glazing, ALR 67 Thermo Glazing

Door width over 3330 mm
(Example 4500 × 3500 mm)



ALR F42 Glazing, ALR 67 Thermo Glazing
with vertical glazing bar

Notice

For modernisation or if you want to ensure a matching appearance to existing sectional doors the ALR F42 Glazing is also available with 91 mm wide rails.

Tip

Efficient thermal insulation

With a U-value of up to 1.7 W/(m²·K)

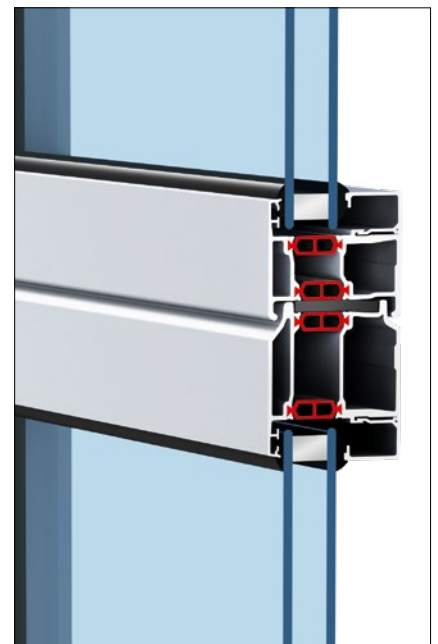
Heated sales areas

The ALR 67 Thermo Glazing has a thermal break and offers optimal thermal insulation with maximum transparency.

Optional climatic glazing and ThermoFrame decrease the thermal insulation value to a maximum of 1.7 W/(m²·K).

This helps you save valuable energy.

→ Further information can be found starting on page 74.



Aluminium sectional doors for sophisticated architecture

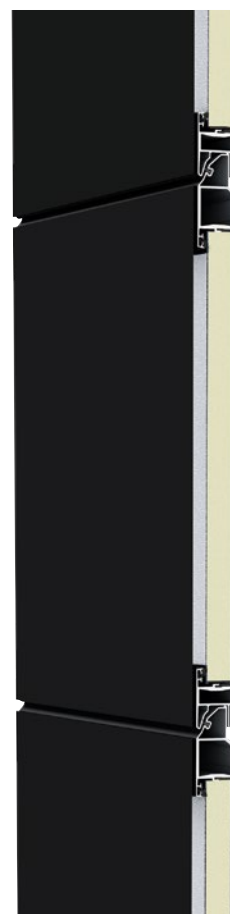
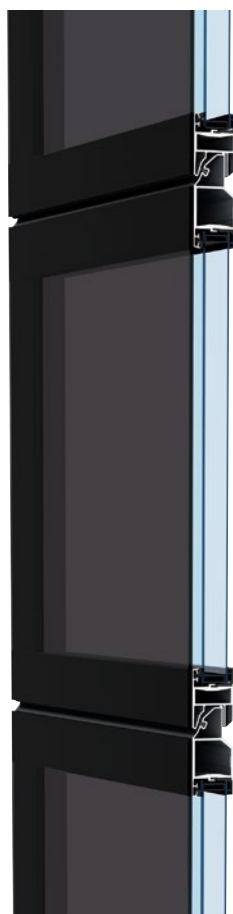
ALR F42 Vitraplan, ALR F42 Vitraplan AT



Duratec

Synthetic glazing with maximum scratch resistance (ALR F42 Vitraplan)

- Extremely elegant overall appearance with surface-mounted, flush-fitting glazing or facade panels
- Concealed frame profiles in matching colour
- Eye-catching element on modern industrial structures and prestigious private buildings
- Grey tinted glazing for an engaging mix of reflection and transparency with ALR F42 Vitraplan
- Modern facade panels for a harmonious appearance with ALR F42 Vitraplan AT



Door type	ALR F42 Vitraplan	ALR F42 Vitraplan AT
-----------	-------------------	----------------------

Door size

Max. width (mm)	6000	6000
Max. height (mm)	7500	7500

Construction

Outer surface	Surface-mounted Duratec glazing	Surface-mounted façade panels
Depth (mm)	42	42
Steel sections	-	-
Thermally separated steel sections	-	-
Aluminium frame	●	●
Thermally separated aluminium frame	-	-

Thermal insulation EN 13241, Appendix B EN 12428

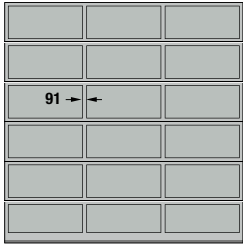
U-value in W/(m²·K) for a door surface of 5000 × 5000 mm

Standard double pane	3,2
With ThermoFrame	3,2
Optional triple pane	3,1
With ThermoFrame	3,1
PU sandwich infill	2,6
With ThermoFrame	2,6

- = As standard
- = Not available

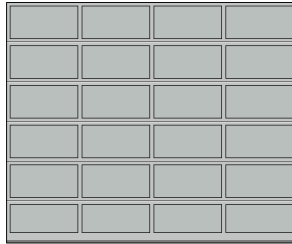
Example door versions

Door width up to 4500 mm
(Example 4500 × 4500 mm)



ALR F42 Vitraplan
Uniform field division

Door width over 4500 mm
(Example 5500 × 4500 mm)



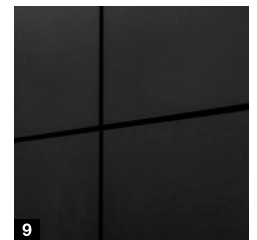
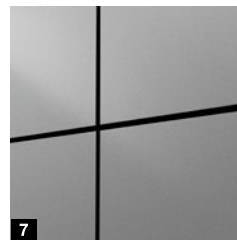
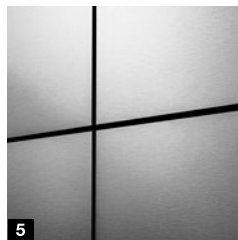
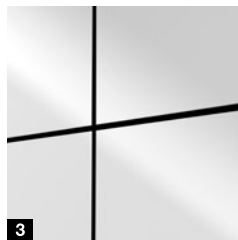
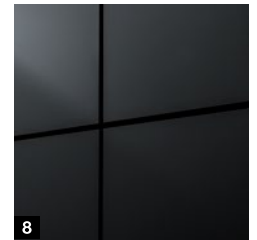
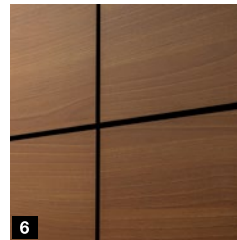
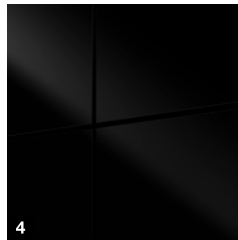
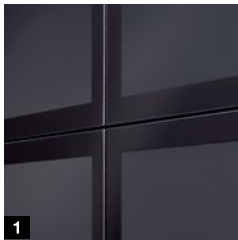
ALR F42 Vitraplan
Uniform field division

Glazing / facade panels

Duratec

ALUCOBOND®

TRESPA®



Duratec glazing

- 1 Grey tinted

ALUCOBOND® facade panels

- 2 naturAL Reflect 405*
- 3 Solid Colours Pure White 10 / 100
- 4 Solid Colours Black 326
- 5 naturAL Brushed 400

Further information can be found at
www.alucobond.com

TRESPA® METEON® facade panels

- 6 Italian Walnut NW08 Matt
- 7 Paris Silver LM 5101 Diffuse
- 8 Anthracite Grey A25.8.1 Satin
- 9 Natural Slate NA18 Matt

Further information can be found at
www.trespa.com

* The ALUCOBOND® panel naturAL Reflect 405 is high-gloss aluminium with a transparent protective coating. The metallic gloss gives objects an elegant and lively appearance. Naturally, reflections may occur, which must be taken into account in the planning on site. As an alternative, the surface finish naturAL Brushed 400 can be selected, which prevents possible disturbing reflections due to its surface texture.

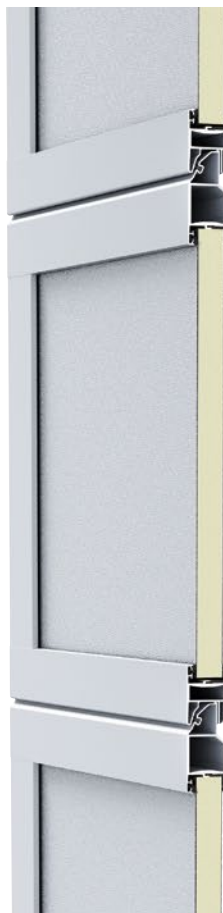
Aluminium sectional doors for on-site cladding

ALR F42



On-site cladding

- Frame profiles with PU sandwich infill
- With horizontal profiles for cladding fitting
- For flush-fitting cladding made of timber, metal and many other materials



ALR F42

The facade cladding door base consists of frame profiles with PU sandwich infill. The horizontal profiles are cladded. Optionally, we provide vertical fitting profiles to which the facade material can be attached simply and unseen. You can design the on-site, flush-fitting facade cladding to suit your requirements with timber, metal, ceramics, plastic and many other materials. Please observe the maximum weight per unit area of the on-site cladding.

→ Further information can be found at <https://hbp.hoermann.com/uk/portal>

Door type

ALR F42

Door size

Max. width (mm) 7000

Max. height (mm) 4500

Construction

Depth (mm) 42

Steel sections -

Thermally separated steel sections -

Aluminium frame ●

Thermally separated aluminium frame -

Thermal insulation EN 13241, Appendix B EN 12428

U-value in $W/(m^2 \cdot K)$ for a door surface of 5000 × 5000 mm

PU sandwich infill 2,6

● = As standard

- = Not available

Excerpt from the planning aid

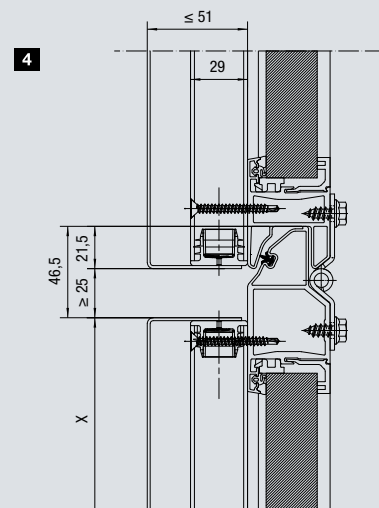
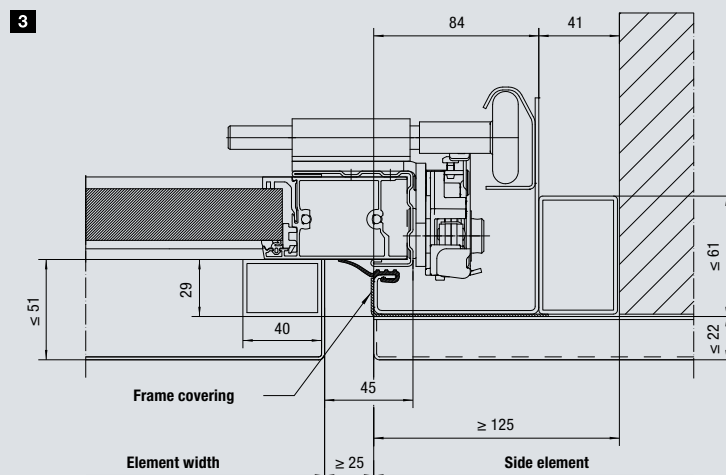
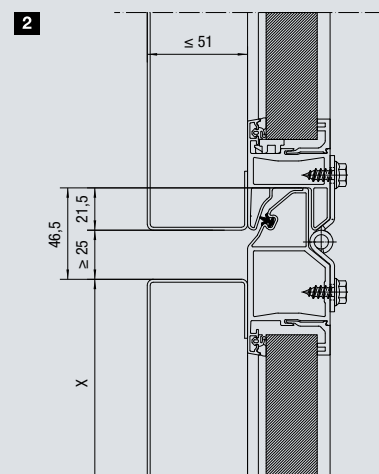
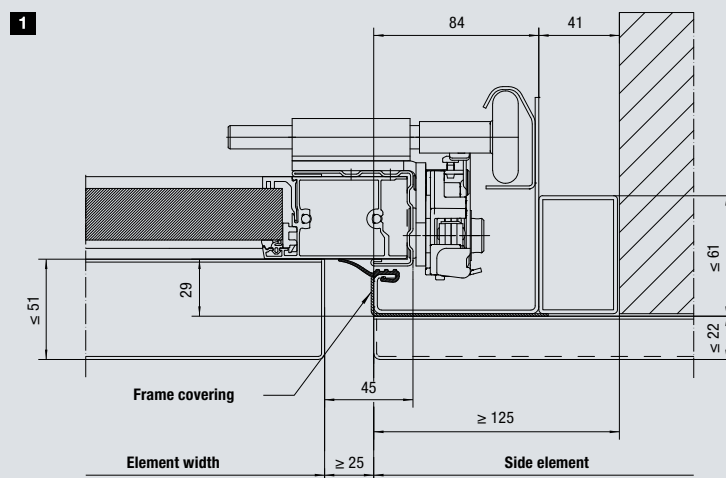
Standard fitting in the opening

Standard version

- Horizontal section connection of the door frame to the façade wall **1**
- Vertical section of section transitions **2**

Version with fitting profiles

- Horizontal section connection of the door frame to the façade wall **3**
- Vertical section of section transitions **4**



Logistics doors

SPU F42 Parcel / APU F42 Parcel

- Robust PU-foamed steel sections with good thermal insulation in the SPU F42 Parcel
- Combinations of extensive aluminium glazing frame and robust PU-foamed steel bottom sections in APU F42 Parcel



Door type	SPU F42 Parcel	APU F42 Parcel
Door size incl. bottom section		
Width LZ (mm)	1500 – 3000	1500 – 3000
Height RM (mm)	3125 – 4250	3125 – 4250
Bottom section height SLH (mm)	500 – 1450	500 – 1450
Opening height (mm)	2575 – 3700	2575 – 3700
Construction		
Depth (mm)	42	42
Steel sections	●	■
Thermally separated steel sections	-	-
Aluminium frame	○	●
Thermally separated aluminium frame	-	-
Closed sectional door	1,0	-
Standard double pane	-	3,4
Track application versions	Track application HP, track application VP	
Door operation	Operator WA 300 S4 (press-and-hold control) and push button DTH-R	
Options	Shootbolt as night locking, rotary latch	

- = As standard
- = As floor section as standard
- = Optional glazing element
- = Not available

SPU F42 Parcel / APU F42 Parcel

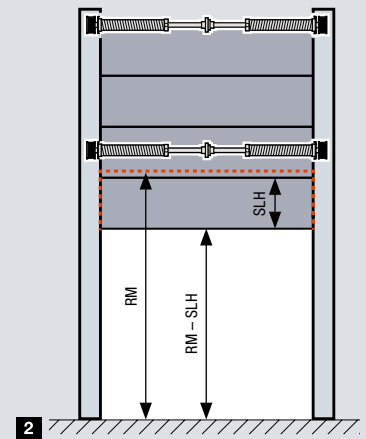
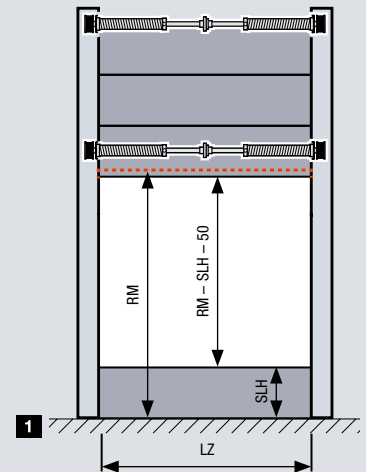
Divisible industrial doors

In parcel service logistics centres or warehouses, different loading sites were previously required to load and unload lorries or swap containers and delivery vans at various other loading sites. The loading surface heights for vans are, at 55 cm, much lower than those for lorries and swap containers, which are approx. 1.35 m.

With the industrial door Parcel, both types of vehicles can be loaded and unloaded at one loading site. For loading lorries or swap containers, the steel bottom section is disconnected from the door and only the top part of the door is opened **1**. When loading vans, the steel bottom section is coupled with the door and remains in the top part of the opening when the door is open **2**.

Advantages of dual utilisation of the loading site:

- Lower investments
for e.g. conveyor belts, loading sites
- Lower personnel costs due to fewer loading sites
- More efficient utilisation of loading sites through double utilisation



Variable door opening

Both door segments are counterbalanced by separate springs and can therefore be moved separately. The power limit of the WA 300 S4 effectively protects against damage caused by obstacles.



Safe and convenient operation

The door is operated using a DTH-R push button (press-and-hold operation). Glazing in the door allow a safe view to the outside.



Easy decoupling

Releasing the espagnolette lock decouples the lower segment.

Innovative construction

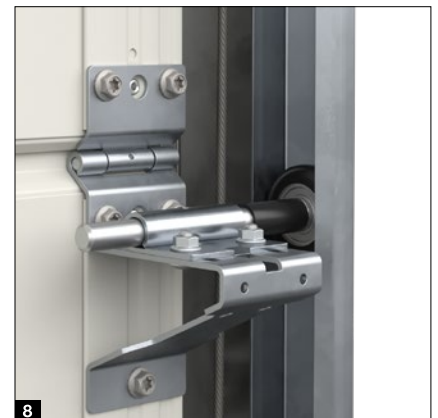
For long-lasting door function





Only from Hörmann

- **ONLY FROM HÖRMANN.** Large double radius **1** for quiet, low-wear door travel
- **ONLY FROM HÖRMANN.** Twin rollers **2** on the top section for especially quiet door closing
- Adjustable plastic rollers with ball-bearing for precise door travel
- Optional 2-component rollers to reduce running noise by up to 5 dB(A) **3**
- **ONLY FROM HÖRMANN.** Optional plastic frame shoe **4** prevents rust on the door frame in the event of waterlogging
- Floor seal with multiple chamber system to improve the floor and side seal
- Upper frame end with connecting bracket **5** for easy fitting of the entire spring shaft
- Secure connection as one piece from the spring shaft to the cable drum **6** for reliable functioning
- Optimised centre hinges made of galvanized steel **7** to connect the individual door sections
- Fitting-friendly roller brackets **8** and roller holders on robust end caps ensure reliable connection of the rollers to the track.



Certified security

For secure door function



Tested and certified

Hörmann industrial sectional doors comply with the safety regulations of European standard 13241. Have this confirmed by other manufacturers.

- Secure door guide prevents the rollers from jumping out **1**
- Easy door opening and closing of the door thanks to optimal counterbalance
- Catch safety device **2** (for doors with torsion spring) protects against rope and spring break
.EUROPEAN PATENT
- Spring safety device (depending on equipment) locks the torsion spring shaft in the event of a spring break and holds the the door securely in its position **.EUROPEAN PATENT**
- Finger trap protection on doors with a depth of 42 mm eliminates trap points on the inside and outside
- Inner rope guide prevents jamming on the rope **3**
- Side trap guards and frames completely closed from bottom to top
- Safety edge in operators WA 500, WA 500 FU / ITO 500 FU as well as automatic safety cut-out in operators WA 300 S4 and SupraMatic HT stop the door in the event of danger



Fitting advantages

For simple, precise fitting



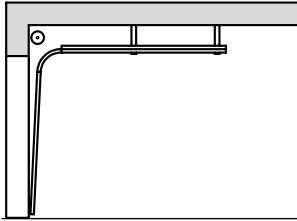
- Precisely fitting connection of track and radius with transition sleeves **1**
- Faster fitting due to fewer components and pressed-in bolts **2**
- Ceiling anchor with perforation in two rows for simple fitting
- Suspension material as L-bracket with continuous perforation (can be shortened) for easy fitting
- Optional C-rail allows suspension points to be reduced **3**
- Diagonal fixing **4** of the top track without ceiling suspension
- Recess at the frame shoe **5** facilitates work if the floor is not yet finished
- Flexible shaft coupling to compensate for minor deviations in alignment
- Bolted tracks for simple, cost-effective exchange in the event of impact damage in the frame area
- Connection bracket for shaft holder **6** for easy torsion spring fitting by just one person
- Spring tensioner **7** for easy tensioning of the torsion spring using a cordless screwdriver, **NEW**. Optional adapter for doors from other manufacturers

→ Watch the short films “Spring tensioner” and “Adapter” on YouTube or www.hormann.co.uk/media-centre

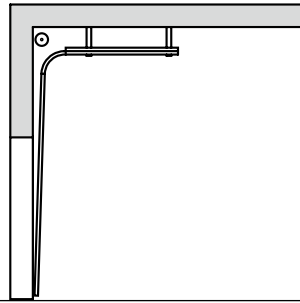
Torsion spring fitting

Sound planning for old and new buildings

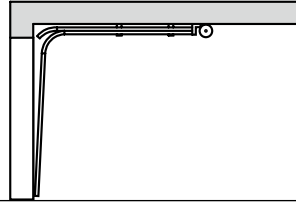
Track versions



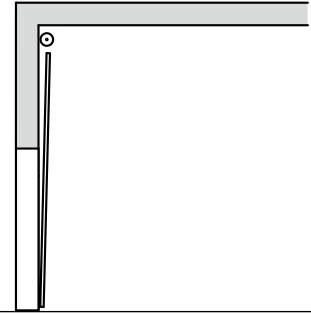
Track application N
Normal track application



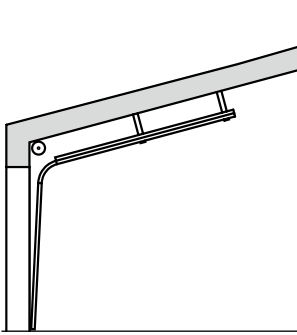
Track application H
High-lift track application



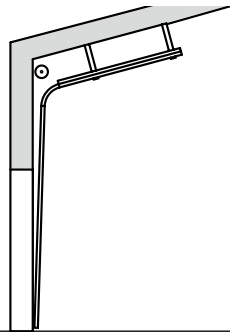
Track application L
Low headroom
track application



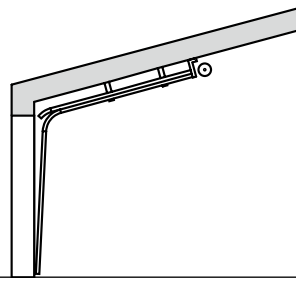
Track application V
Vertical track application



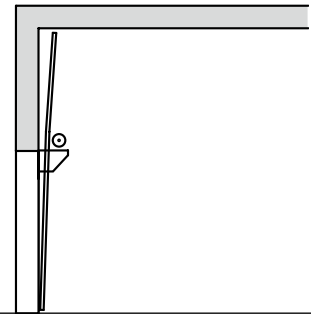
Track application ND
With inclination



Track application HD
With inclination

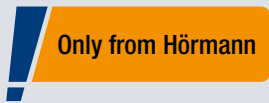


Track application LD
With inclination



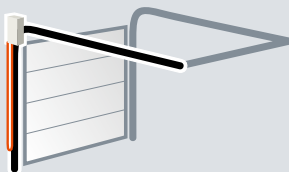
Track application VU
With bottom-mounted
spring shaft

→ Further information can be found at
<https://hbp.hoermann.com/uk/portal>

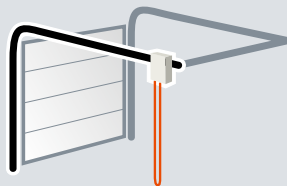


Low headroom track application

Operator and chain are directly on the door.
There is no free-hanging chain in the centre of the room. It pays to compare!



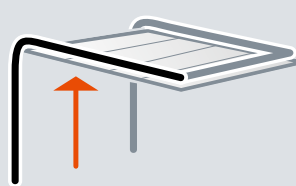
Hörmann's optimal arrangement



Competitors' disruptive arrangement

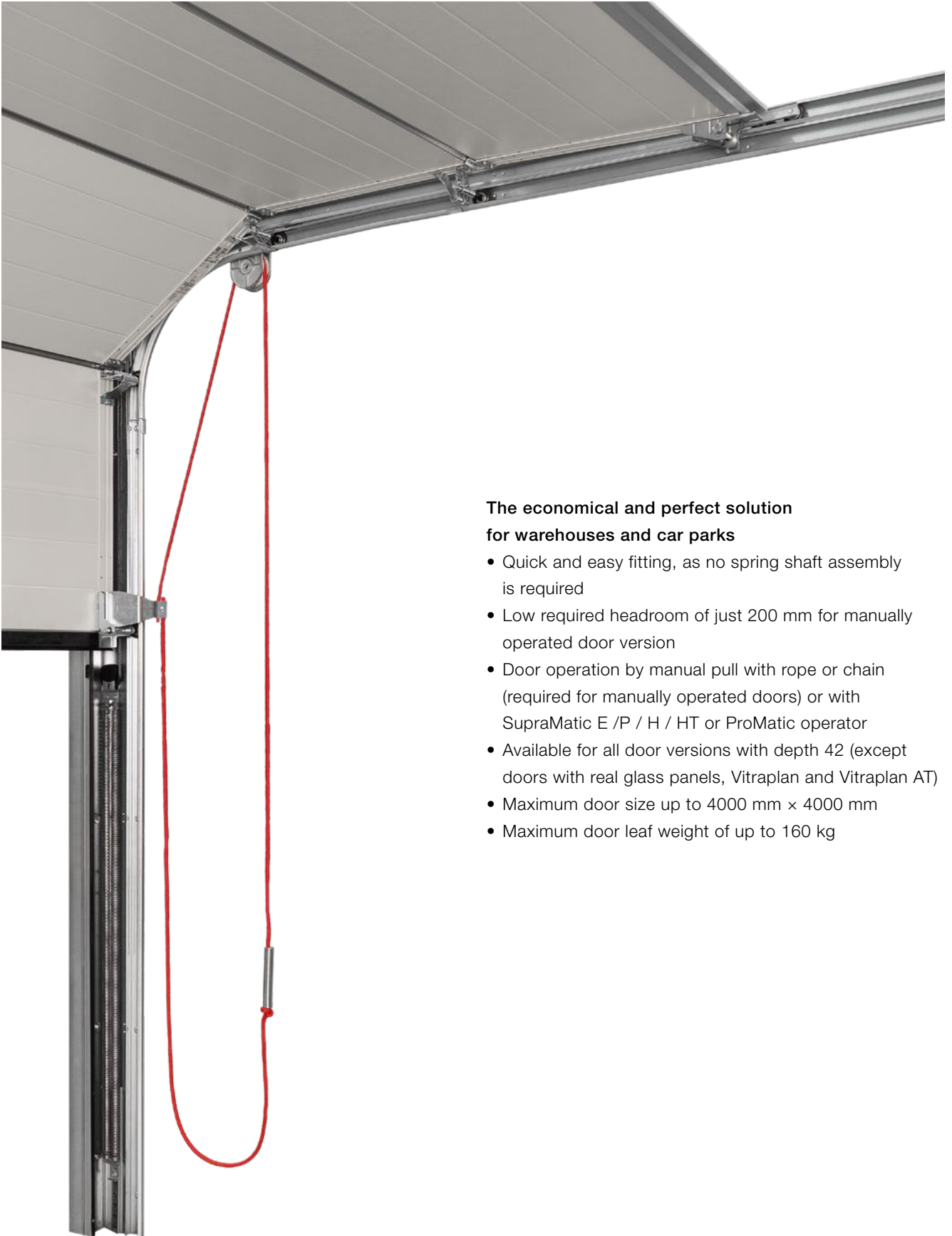
Full passage height

Under certain circumstances, the low headroom track application enables the full passage height with only 200 mm required headroom.



NEW. Tension spring track application

Shorter fitting time and low required headroom



The economical and perfect solution for warehouses and car parks

- Quick and easy fitting, as no spring shaft assembly is required
- Low required headroom of just 200 mm for manually operated door version
- Door operation by manual pull with rope or chain (required for manually operated doors) or with SupraMatic E / P / H / HT or ProMatic operator
- Available for all door versions with depth 42 (except doors with real glass panels, Vitraplan and Vitraplan AT)
- Maximum door size up to 4000 mm × 4000 mm
- Maximum door leaf weight of up to 160 kg

Movable centre support

For large openings of up to 30 m width

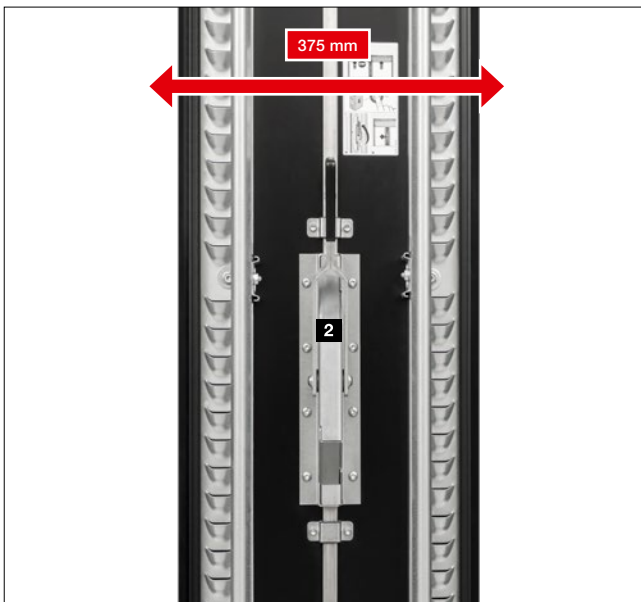
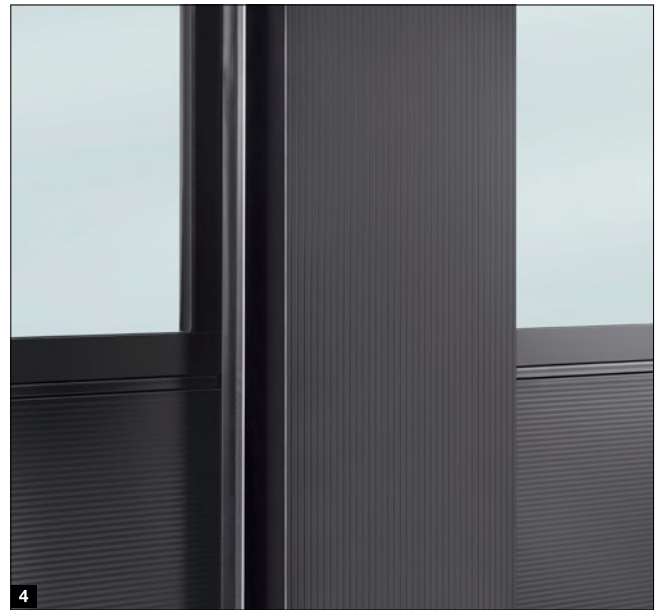
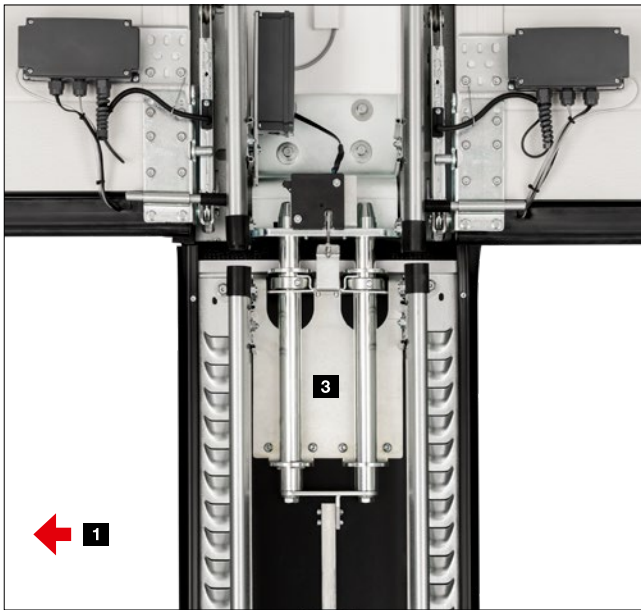
Economical combination

This door combination allows for particularly large openings to be closed conveniently and economically by coupling two or three industrial sectional doors. This door combination is especially economical during transport, fitting and service.

Variable door openings

For complete opening, the doors are opened and the centre support is then unlocked and pushed to the side. The individual doors can also be opened independently of each other so that the opening can also be done in segments. This means that the opening can also be used in segments.





Details

- Can be quickly and easily moved sideways thanks to a low-friction track behind the lintel **1**
- No inward or outward swivelling components
- Narrow centre support made of aluminium with a width of only 375 mm
- Espagnolette lock **2** with function monitoring prevents door travel when the centre support is unlocked
- Robust bolts on the lintel and floor for a secure lock and reliable transfer of wind loads **3**

Exterior view

- Aluminium as standard with line design **4** in Grey white RAL 9002
- Optionally in preferred colours, RAL to choose or special colours (door and support shown in Deep black RAL 9005)

Wicket doors with trip-free threshold

with high-quality equipment





Overhead door closer

As standard, wicket doors are supplied with slide rail door closer including hold-open device **1**. An integrated door closer with hold-open device **2** is optionally available for doors with 42 mm depth for optimum protection and the best appearance.



Optional multiple-point locking system **3**

The wicket door is locked over the entire door height with one bolt and hook bolt per door section. The advantage: better stability and improved break-in resistance equipment.



Flat wicket door frame **5**

The all-round frame consists of a flat aluminium profile. The wicket door is harmoniously integrated into the door.



Concealed hinges **6**

For a uniform door view, the wicket doors are equipped with concealed hinges as standard.



Finger trap protection (external and internal)* **7**

The unique shape of the door sections and the wicket door frame eliminate trap points when the door opens and closes.



Optimally sealed **8**

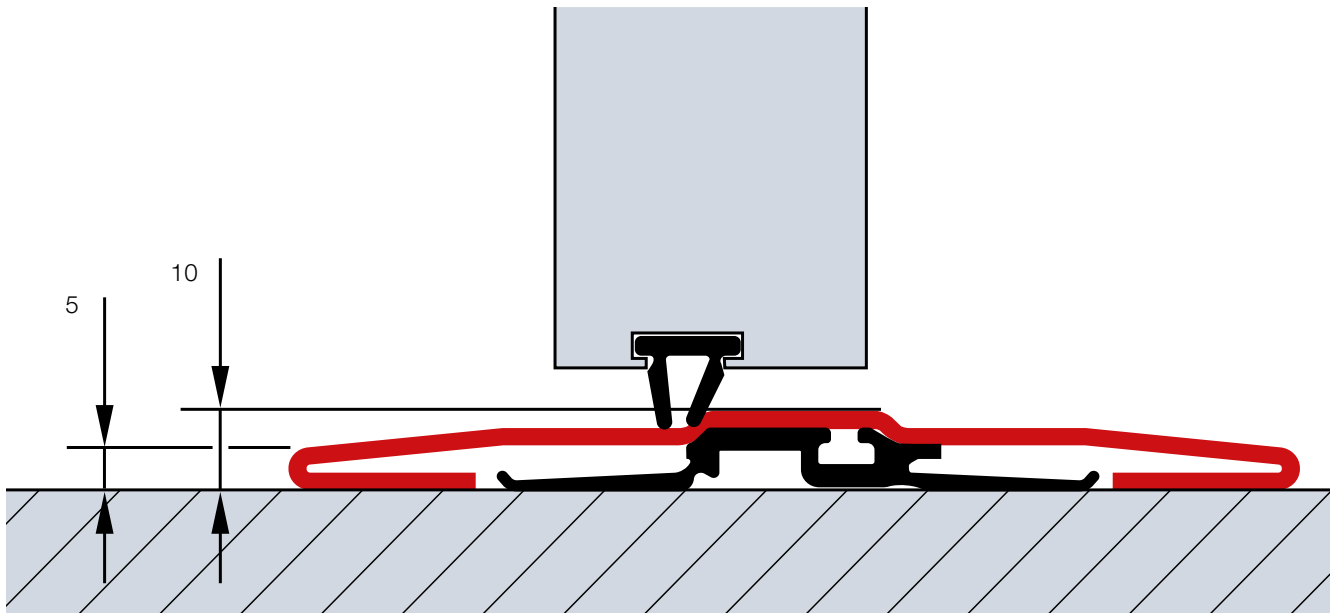
The adjustable threshold profile with flexible seal compensates for unevenness in the floor. Adjustable double seals at the transition from the bottom edge of door to the floor and from the door leaf to the threshold optimally seal the bottom edge of the door and the wicket door opening.



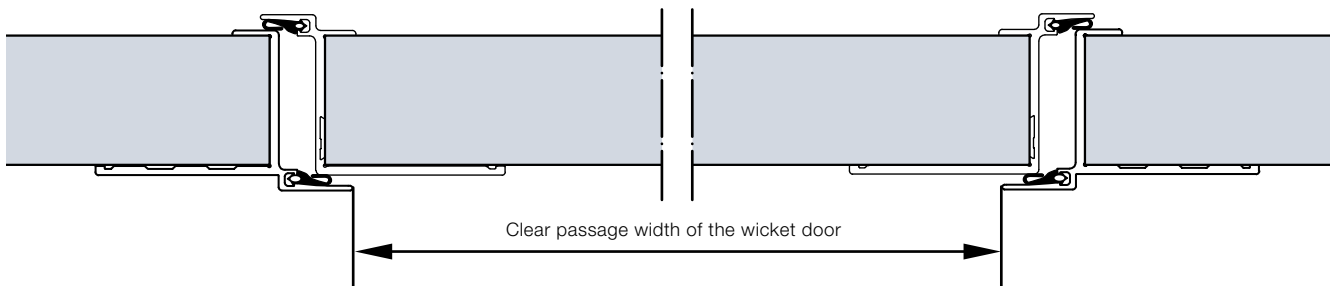
* Not for wicket door with 67 mm depth

Wicket doors with trip-free threshold

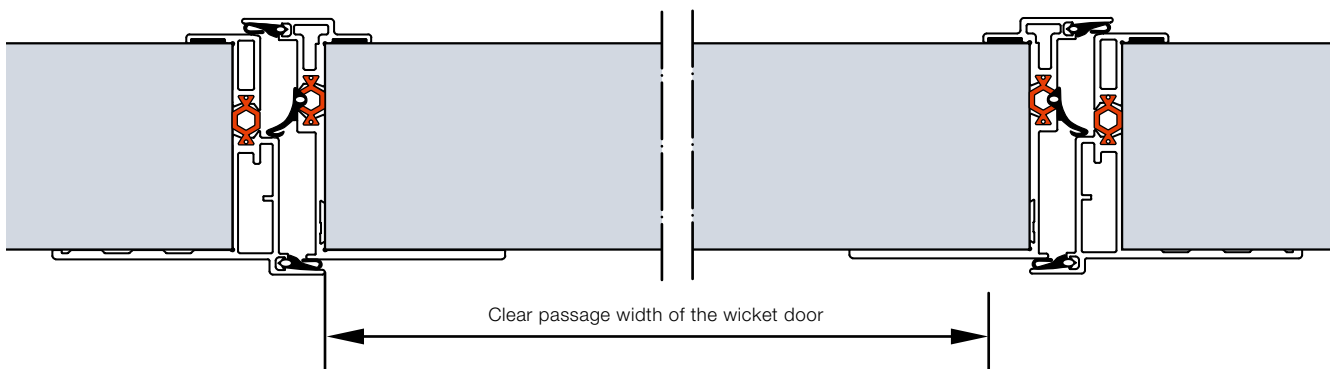
Fully-fledged passage doors



Wicket door construction for sectional doors with 42 mm depth



Wicket door construction with thermal break for sectional doors with 67 mm depth



Trip-free passage

The stainless steel threshold rail is 10 mm high at the centre and 5 mm at the edges. We provide a reinforced threshold rail of approx. 13 mm for doors from 5510 mm width or for doors with wicket door and real glass from 4510 mm width.

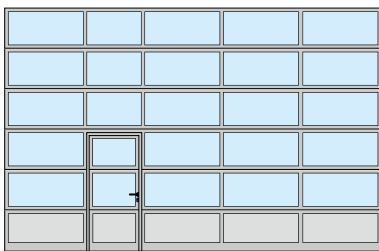
940 / 905 mm clear passage width as standard

Under certain circumstances, the wicket door with trip-free threshold, with its clear passage width of 940 mm (depth 42 mm) or 905 mm (depth 67 mm), fulfils the requirements for an escape door and for barrier-free construction.

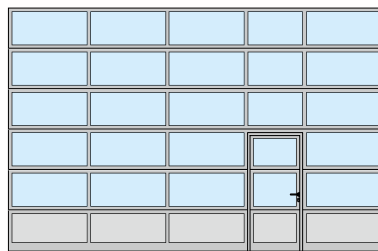
Freely selectable position

The wicket door can be positioned to the left, right or at the centre (except for the two outermost fields). The window sections above the wicket door have a clear view of 1025 mm as standard. All other fields of the door have the same width.

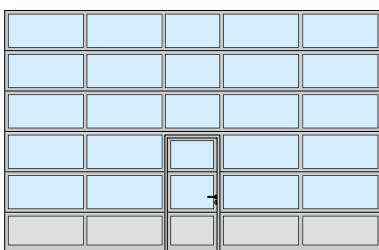
Example door versions



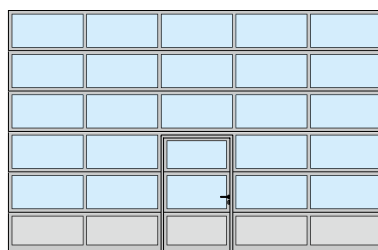
Wicket door arrangement on the left



Wicket door arrangement on the right



Wicket door arrangement in the centre



Wicket door arrangement in the centre with uniform field division



Escape door

Under certain conditions, Hörmann wicket doors without a threshold rail fulfil the requirements for an escape door (for doors up to 5500 mm wide or for doors with real glass up to 4510 mm wide).



Unobstructed entrance

Under certain conditions, Hörmann sectional doors with wicket door and trip-free threshold fulfil the requirements for accessibility in accordance with DIN EN 18040-1 and are certified by the ift Rosenheim.

Notice

On request, doors with wicket door are also available with uniform field division and the wicket doors can be supplied in individual sizes or, to match existing doors, even with threshold rail.

We recommend the wicket door with threshold rail for inclining surfaces in the opening area.

Side doors

Matching the door

Side door NT 60 **1**

- 60 mm aluminium frame construction
- As standard with all-round seals made of long-lasting, weather-resistant EPDM
- Infill variants same as for sectional doors with 42 mm depth
- Infill fixed by glazing beads

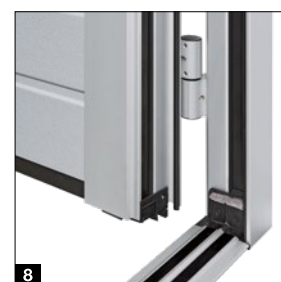
- 1** Exterior view
- 2** Interior view with synthetic glazing
- 3** Viewed from inside with sections
- 4** Lever handle set as standard

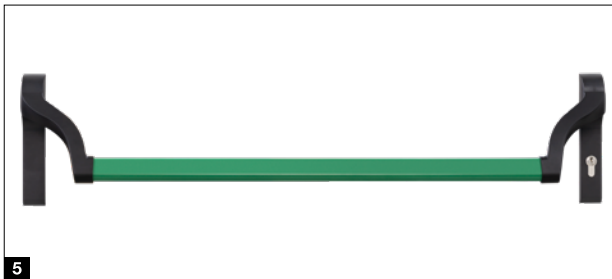
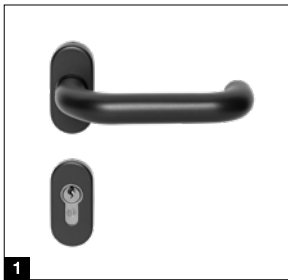


Thermally separated side door NT 80 Thermo **5**

- 80 mm aluminium frame construction with thermal break
- With all-round seal as standard seal made of age- and weather-resistant EPDM as standard
- Thermally separated infill variants for doors with 42 mm and 67 mm depth
- Infill fixed by glazing beads

- 5** Exterior view
- 6** Interior view with triple synthetic glazing
- 7** Lever handle set as standard
- 8** Thermal break between door leaf, frame and threshold rail





Door hardware

- Mortice lock with profile cylinder
- Offset lever handle set with oval rose escutcheons made of black plastic **1**
- On request also available as lever / knob handle sets
- Optionally available in natural finish cast aluminium **2**, polished stainless steel **3** or brushed stainless steel **4**

Optional equipment

- Tested break-in-resistant RC2 security equipment according to DIN EN 1627
- Stainless steel push bar 38-2, brushed, 1000 mm high, exterior, additionally with stainless steel lever handle set, interior
- Overhead door closer with hold-open device
- Push bar **5** in black / green or stainless steel, for escape door, inside (anti-panic lock required)
- Multiple-point locking also with anti-panic functions B, D, E



Multi-purpose door MZ Thermo65

Steel side doors with thermal break

- 65 mm thick door leaf with thermal break with PU rigid foam infill
- Thermally broken aluminium block frame with thermally broken aluminium threshold
- High thermal insulation with a U-value = 0.82 W/(m²·K)
- Optionally available with RC2 security features as KSI Thermo46 with 46 mm thick door leaf

Individual colour schemes

For greater design freedom

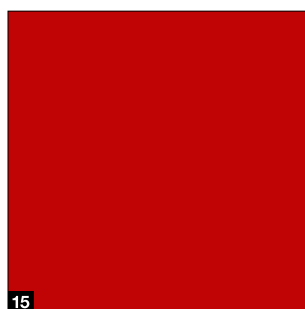
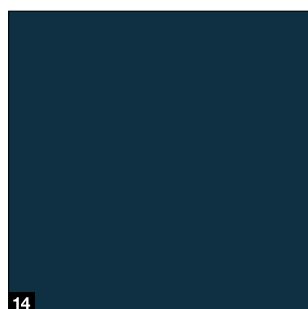
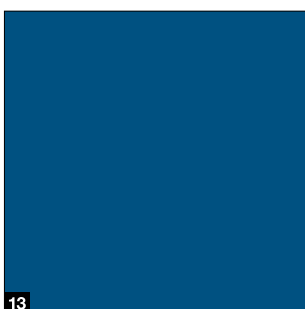
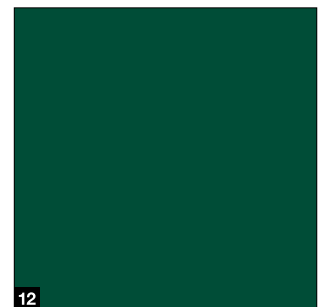
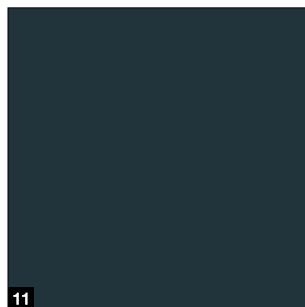
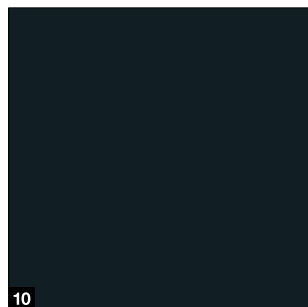
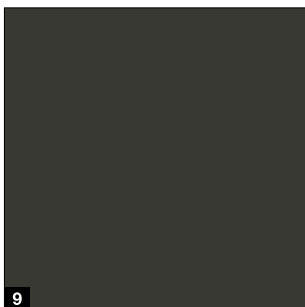
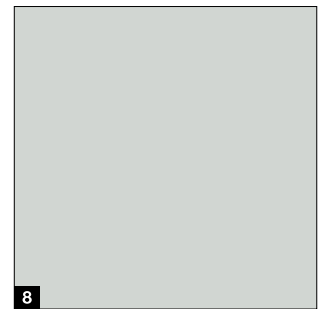
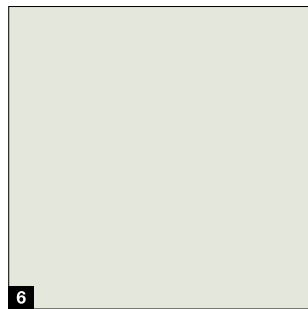
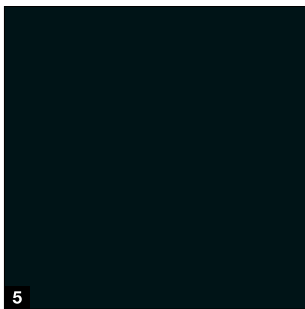
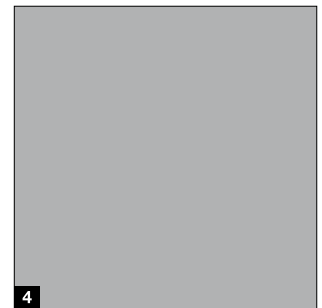
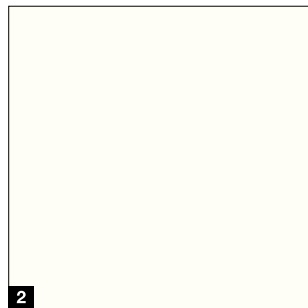
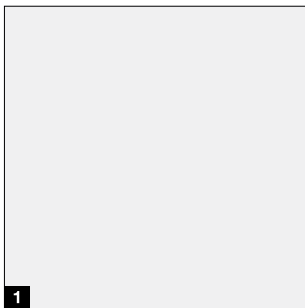
Stucco surface



Micrograin surface



Preferred colours "silk-gloss"



NEW. Plainrain surface



No surcharge

Preferred colours for double-skinned steel sections in all depths

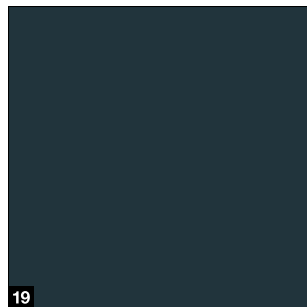
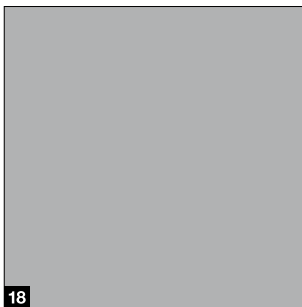
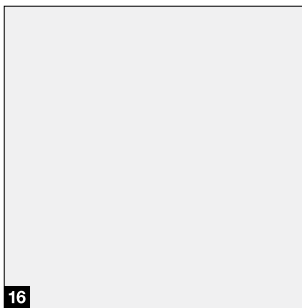
A Stucco surface

B Micrograin surface

Preferred colours "silk-gloss"

- 1 RAL 9016 Traffic white
- 2 RAL 9010 Pure white
- 3 RAL 9007 Grey aluminium
- 4 RAL 9006 White aluminium
- 5 RAL 9005 Jet black
- 6 RAL 9002 Grey white
- 7 RAL 8028 Terra brown
- 8 RAL 7035 Light grey
- 9 RAL 7022 Umbra grey
- 10 RAL 7021 Black grey
- 11 RAL 7016 Anthracite grey
- 12 RAL 6005 Moss green
- 13 RAL 5010 Gentian blue
- 14 RAL 5003 Sapphire blue
- 15 RAL 3000 Flame red

NEW. Preferred colours "Matt fine structure"



C NEW. Plainrain surface

NEW. Preferred colours "Matt fine structure"

- 16 RAL 9016 Traffic white
- 17 RAL 9007 Grey aluminium
- 18 RAL 9006 White aluminium
- 19 RAL 7016 Anthracite grey

NEW. Optional wet lacquer coating "Matt fine structure"

- 20 CH 703 Anthracite Metallic

NEW. Optional wet lacquer coating "Matt fine structure"



Notice

Dark colours should not be used for double-skinned steel doors and for doors with thermal break that are exposed to the sun, as possible section deflection may restrict the door's function (bi-metal effect). The colours shown are subject to the limitations of the printing process and cannot be regarded as binding. Contact your Hörmann specialist dealer for advice regarding coloured doors. All colours based on RAL.

Individual colour schemes

For greater design freedom



NEW. Environmentally friendly,
water-based paint

High-quality coating

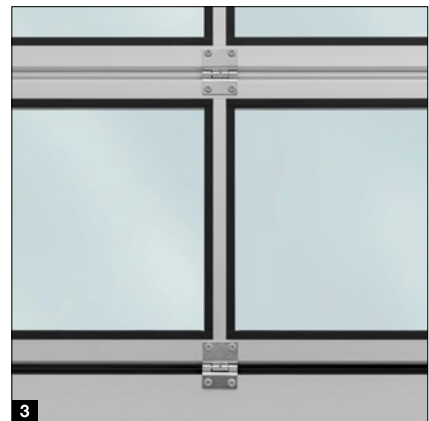
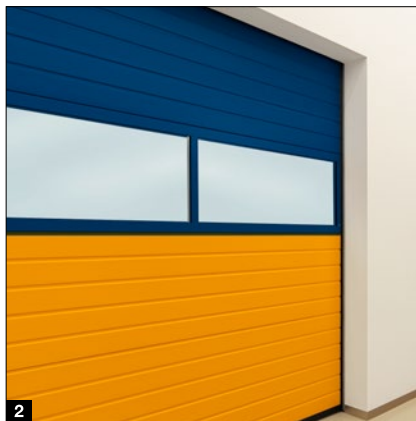
- High-quality coil coating for double-skinned sections in the 15 preferred colours “silk-gloss” and in the **NEW.** 4 preferred colours “matt fine structure”, inside in Grey white RAL 9002 ¹⁾
- High-quality wet paint coating (2K-PUR) for aluminium frames on the outside or outside and inside in “silk-gloss” and in **NEW.** “Matt fine structure” as well as RAL and NCS colours in many metallic colours and according to British Standard ²⁾
- Continuous wet paint coating of steel sections and aluminium frame for a harmonious and 100% uniform view **1**

Optional colour coatings

- **NEW.** Two-colour painting (regardless of door type and door element type) of the outside, for example to implement the corporate design or to identify building areas **2**
- Wicket door frame profiles on the outside, inside in aluminium anodised E6/C0
- **NEW.** Exterior lacquering on one side of door leaf frame and door frame for side door NT80
- **NEW.** One-sided exterior painting of aluminium glazing frames, interior in aluminium anodised E6/C0 for a harmonious interior view in combination with door sections in Grey-white RAL 9002 **3**
- Outer frame of compound windows type A (die-cast frame) and type D (plastic frame), inner frame generally in black
- End brackets, door leaf reinforcements, centre hinges in the colour of the inside of the door for an elegant and uniform interior appearance **4**
- Painting of stainless steel expanded mesh and perforated stainless steel sheets on the outside and inside **5**
- Painting PU sandwich infills on the outside or outside and inside **6**

¹⁾ Excluding ALR F42 Vitraplan and Vitraplan AT

²⁾ Pearl effect and fluorescent colours are excluded, minor colour and structure deviations are permissible





UV protection

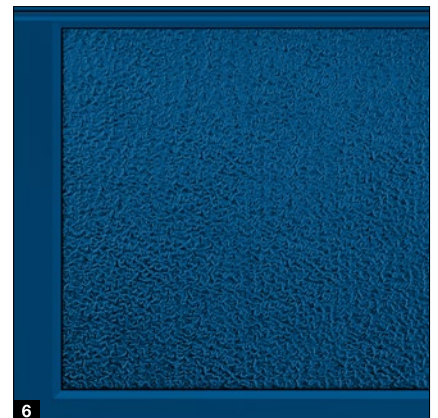
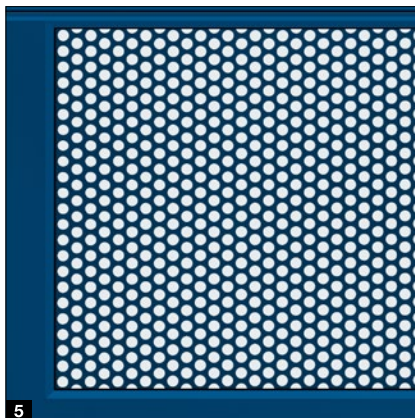
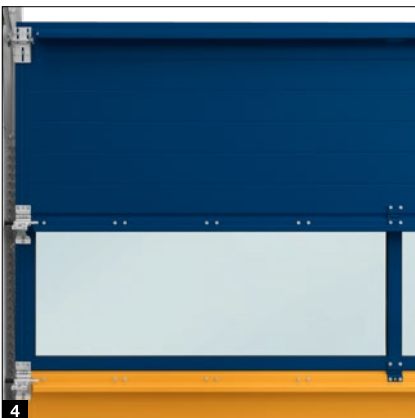
NEW. High-quality protective paint*

- Optional protection against UV radiation and other environmental effects
- Environmentally-friendly, water-based protective paint
- Surface finish appearance virtually unchanged after 10 years: loss of colour and gloss, weathering, greying and chalking effectively prevented

* except ALR Vitraplan and ALR Vitraplan AT



- 1 Double-skinned section
- 2 Galvanisation
- 3 High-quality coating
- 4 Optional: high-quality protective paint



Glazings

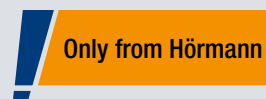
For more light

	Duratec glazing	SPU F42	SPU 67 Thermo	APU F42	APU F42 Thermo	APU 67 Thermo	ALR F42	ALR F42 Thermo	ALR 67 Thermo	ALR F42 Glazing	ALR F67 Thermo Glazing	ALR F42 Vitraplan	ALR F42 Vitraplan AT
● = Possible													
Aluminium glazing frame													
Synthetic panes													
Clear single pane	●	●		●			●						
Single pane, crystal structure		●		●			●						
Clear double pane	●	●		●	●		●	●				●	
Double pane, crystal structure		●		●	●		●	●				●	
Double pane, tinted in grey or white (opal)	●	●		●	●		●	●				●	
Clear triple pane	●		●			●			●				
Triple pane, crystal structure		●	●	●	●	●	●	●	●			●	
Triple pane, tinted in grey or white (opal)	●	●	●	●	●	●	●	●	●			●	
Clear quadruple pane	●		●			●			●				
Quadruple pane, crystal structure			●			●			●				
Quadruple pane, tinted in grey or white (opal)	●		●			●			●				
Polycarbonate panes													
Clear single pane	●	●		●			●						
Clear double pane	●	●		●	●		●	●				●	
Clear triple pane	●		●			●			●				
Clear quadruple pane	●		●			●			●				
Real glass panes													
Clear single pane, laminated safety glass		●		●			●			●			
Clear double pane, single-pane safety glass		●	●	●	●	●	●	●	●	●	●		
Clear double climatic pane, single-pane safety glass		●	●	●	●	●	●	●	●	●	●		
Infills													
Multiple-moulded pane		●		●	●		●	●					

A permanently clear view

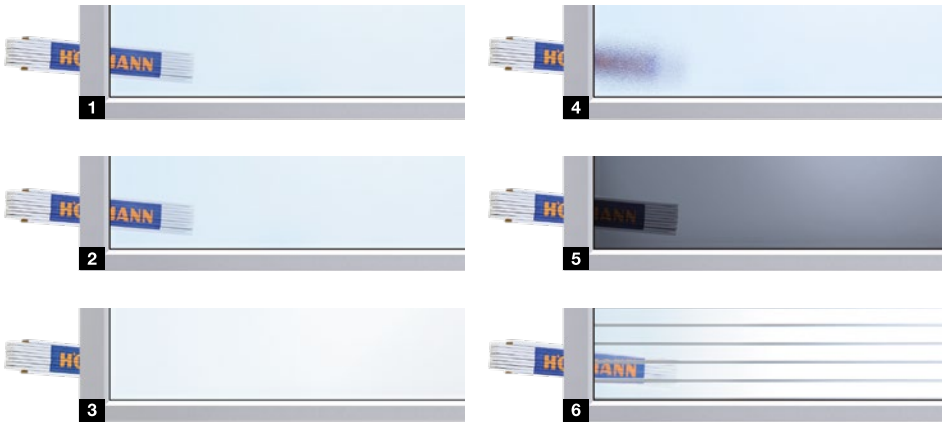
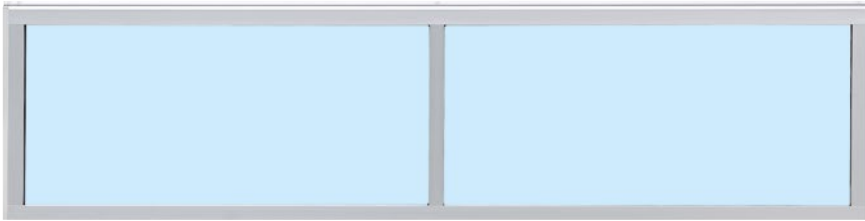
Duratec glazing is available as standard at no surcharge with all sectional doors with clear synthetic glazing.

With the Duratec synthetic glazing, Hörmann sectional doors retain their clear view even after repeated cleaning and heavy use, unlike conventional synthetic glazing.



Duratec
Highly scratch-resistant synthetic glazing

Aluminium glazing frame



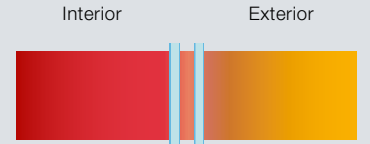
- | | |
|--|---|
| <p>1 Polycarbonate double pane, clear</p> <p>2 Synthetic double pane, clear</p> <p>3 Synthetic double pane, white tinted (opal / clear)</p> | <p>4 Synthetic double pane, crystal structure</p> <p>5 Synthetic double pane, grey tinted</p> <p>6 Multiple-moulded pane</p> |
|--|---|

Aluminium glazing frame

Thermal break	Without	With
Standard	Anodised with natural finish E6 / C0	Anodised with natural finish E6 / C0
Optional	Colour coating outside or both sides	Colour coating outside or both sides
Clear view	Depending on version	Depending on version
Rail extrusion	52 mm, optional 91 mm*	52 mm, optional 91 mm*

* Only 42 mm depth

Good thermal insulation as standard



Conventional double pane, 16 mm from other manufacturers



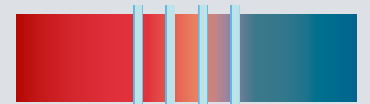
Up to 20% improved thermal insulation*
Duratec double pane, 26 mm (as standard)



Up to 35% improved thermal insulation*
Duratec triple pane, 26 mm (optional)



Up to 40% improved thermal insulation*
Duratec triple pane, 51 mm (optional)



Up to 55% improved thermal insulation*
Duratec quadruple disc, 51 mm (optional)



Up to 65% improved thermal insulation*
Double climate pane, 26 mm (optional)

* compared to conventional 16 mm double panes of other manufacturers

Glazings and infills

For more light and better ventilation

	Duratec glazing	SPU F42	APU F42	APU F42 Thermo	APU 67 Thermo	ALR F42	ALR F42 Thermo	ALR 67 Thermo	ALR F42 Vitraplan AT
--	-----------------	---------	---------	----------------	---------------	---------	----------------	---------------	----------------------

● = Possible

Aluminium frame

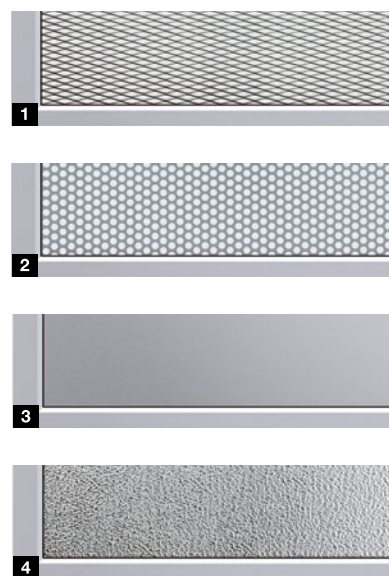
Infills

Stainless steel expanded mesh Ventilation cross-section: 54% of the infill surface		●	●			●			
Perforated stainless steel sheet Ventilation cross-section: 40% of the infill surface		●	●			●			
PU infill, aluminium sheet cladding, anodised on both sides, smooth			●	●	●	●	●	●	●
PU infill, aluminium sheet cladding, stucco embossing on both sides			●	●	●	●	●	●	●

Aluminium frame

Thermal break	Without	With
Standard	Anodised with natural finish E6 / C0	Anodised with natural finish E6 / C0
Optional	Colour coating outside or on both sides	Colour coating outside or on both sides
Ventilation cross-section	Depending on version	Depending on version
Rail extrusion	52 mm, optional 91 mm*	52 mm, optional 91 mm*

* Only 42 mm depth



- 1 Stainless steel expanded mesh
- 2 Perforated stainless steel sheet
- 3 PU sandwich infill, smooth
- 4 PU sandwich infill, stucco

	● = Possible	Duratec glazing	SPU F42	SPU 67 Thermo
--	--------------	-----------------	---------	---------------

Compound windows

Synthetic panes

Synthetic double pane, clear, plastic frame	●	A, D, E, F	
Clear double pane, die-cast frame	●	A	
Clear triple pane, synthetic frame	●		D, F
Clear triple pane, die-cast frame	●		A
Clear quadruple pane, die-cast frame	●		A

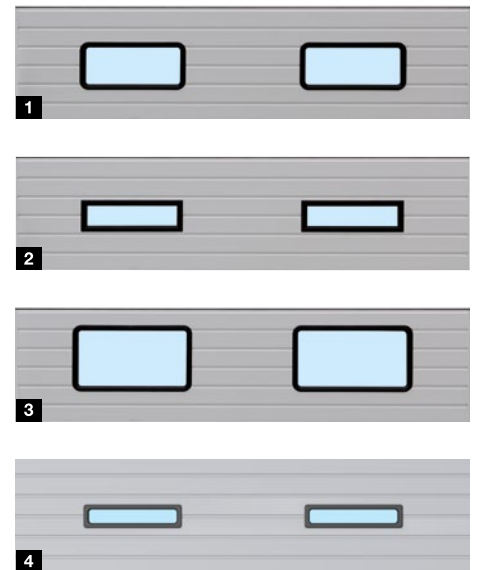
Polycarbonate panes

Clear double pane, die-cast frame	●	A	
-----------------------------------	---	---	--

Real glass panes

Clear double pane, single-pane safety glass		A	
Clear triple pane, single-pane safety glass			A

Compound windows



- 1 Compound windows type A
- 2 Compound windows type D
- 3 Compound windows type E
- 4 Compound windows type D

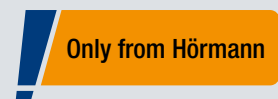
Compound windows

	Type A	Type D	Type E	Type F
Standard	Plastic or die-cast frame in black	Plastic frame in black	Plastic frame in black	Plastic frame in black
Optional	Die-cast frame with colour coating on the outside	Colour coating outside		
Clear view (width x height)	635 × 245 mm	602 × 132 mm	725 × 370 mm	540 × 83 mm
Door section height	500, 625, 750 mm	500, 625, 750 mm	625, 750 mm	375, 500, 625, 750 mm

A permanently clear view

Duratec glazing is available as standard at no surcharge with all sectional doors with clear synthetic glazing.

With the Duratec synthetic glazing, Hörmann sectional doors retain their clear view even after repeated cleaning and heavy use, unlike conventional synthetic glazing.



Duratec
Highly scratch-resistant synthetic glazing

Optional energy-saving equipment

For efficient thermal insulation and sealing

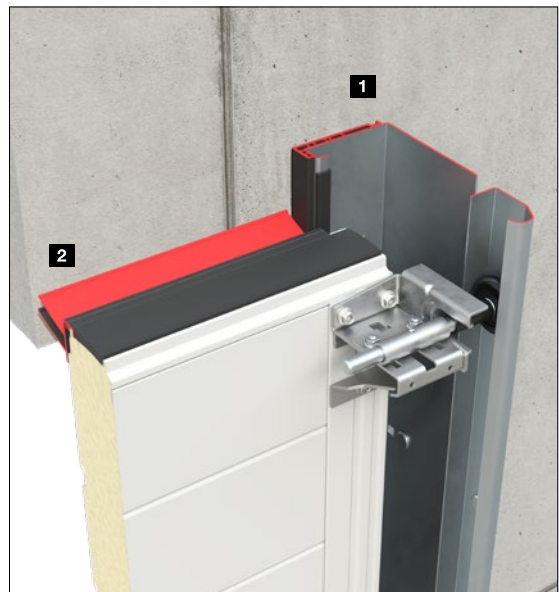


Up to 21%

better thermal insulation¹⁾

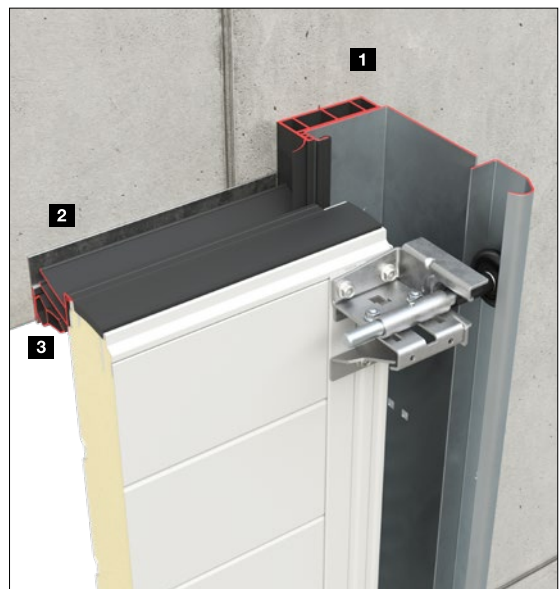
ThermoFrame 6

- 6 mm thick thermal break between the door frame and the brickwork **1**
- Additional seals for better tightness **2**
- Easy to fit together with the door frame
- Optimum corrosion protection of the side frame
- **Up to 21% improved thermal insulation²⁾**



ThermoFrame 26

- Greater distance to the outer wall due to 26 mm thick thermal break between the door frame and the brickwork **1**
- Minimisation of energy losses due to deflection of the section caused by solar radiation
- With dark colour thanks to overlapping lintel **2** and additional lintel counter seal **3**
- Easy to fit together with the door frame
- Optimum corrosion protection of the side frame
- **Up to 21% improved thermal insulation²⁾**

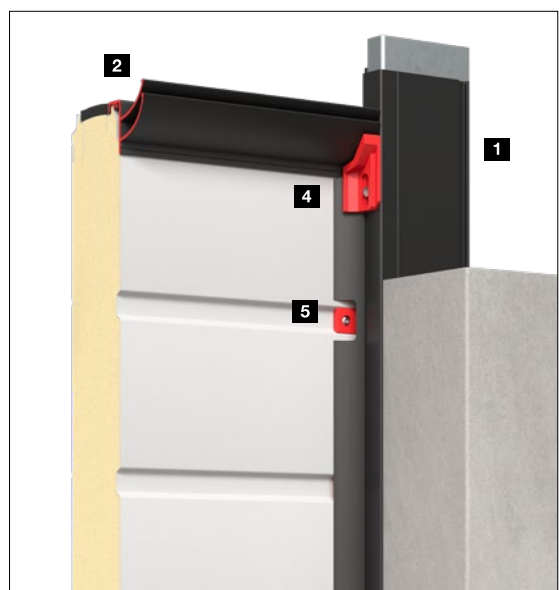


up to class 4

low air permeability²⁾

Increased airtightness to reduce energy losses

- Optional corner seals **4** increase the tightness in the transition between door frames and lintel
- Optional infills **5** seal the ribbing and transitions in the sections

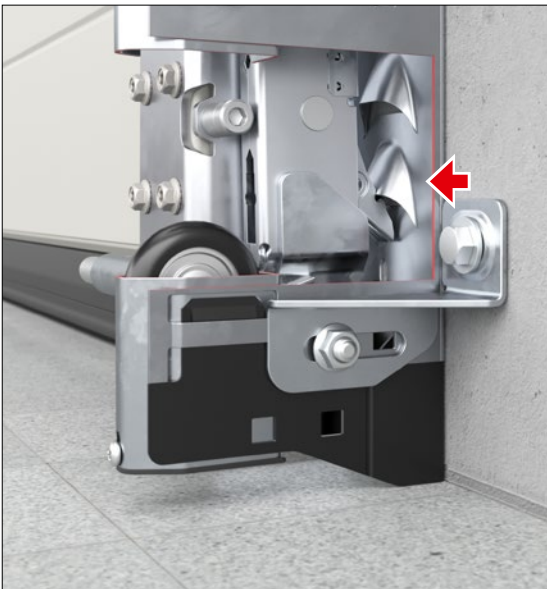


¹⁾ SPU 67 Thermo without glazing with optional ThermoFrame for a door surface of 3000 × 3000 mm

²⁾ SPU 67 Thermo, without glazing with optional ThermoFrame and "Increased airtightness" set

Reliable security features

For protecting goods and machines



The locking hook of the anti-lift kit automatically latches if the door is forced upwards.

Only from Hörmann

Anti-lift kit on both sides



Anti-lift kit
as standard*



Optionally with RC2-
security features

Tested and certified

Anti-lift kit as standard

It is also important for industrial doors to be reliably break-in resistant to protect your goods and machines. At Hörmann, all industrial sectional doors with torsion springs are supplied with the break-in-resistant anti-lift kit on both sides as standard. This mechanical protection reduces the risk of the door being pushed open by force, even in the event of a power failure. The self-locking gearbox (ITO 500 FU) or the mechanical door lock in the operator rail (SupraMatic HT) make it difficult to prise open sectional doors with rail-guided operators.

Mechanical door lock

For doors with tension spring technology in combination with the SupraMatic HT, SupraMatic H / P / E and ProMatic operators, the mechanical door lock in the operator track prevents unwanted levering open.

Optional RC2 security features

For especially high break-in resistance, industrial sectional doors SPU F42 and SPU 67 Thermo are optionally available in resistance class RC 2 – tested and certified in accordance with the new standard DIN/TS 18194. This certified security is also recommended by police information centres.

* For doors with torsion spring

Locking

For manual or power-driven doors

Securely locked as standard

Shootbolt with adjustable lock plate

This can be secured with an on-site padlock as a secure night lock.



Rotary latch with locking bolts that can be adjusted horizontally and vertically

This door lock automatically locks itself through the latching disc.



Only from Hörmann

Floor locking

This enables frequently used doors to be released by foot. The automatic locking audibly engages when the door is closed.



Only from Hörmann

Automatic locking

A bolt automatically locks the door when the "CLOSE" end-of-travel position is reached. When locked, the bolt is mechanically blocked and thus protected against possible manipulation by simply pushing the bolt in by hand. Manual emergency release is still possible at any time, either as a quick release or as a secured release. The locking device is available in two variants: ETV1-HCP ¹⁾ for control units 545, 560 and ETV1 ²⁾ for control units 445 R, 460 R and for third-party control units.

¹⁾ "Locked" message possible via control unit (required for control unit 545 multi-function circuit board)

²⁾ With ETV1, additional limit switch reporting is required



Operation options

For manually operated doors

Locking operation from outside

Handle set

With the handle set, the door lock can be ergonomically operated from outside. From inside, the lock is operated via T-handle and securing split pin.

The profile cylinder can also be integrated into central locking systems.

Recessed handle set

Thanks to a flat design and flexible installation height, the handle set is ideal for loading ramp doors in logistics applications. You can operate two functions with the locking cylinder: permanently unlocked door and automatic re-locking.

All parts on the inside are protected by cladding.



Shootbolt



Rotary latch



Shootbolt



Rotary latch

Manual operation from inside

Manual

with rope or link steel chain

Chain hoist

Chain tensioner

for easier operation





WA 300 S4

230 V 1-phase current

- Soft start and soft stop for gentle door travel
- Power limit in OPEN / CLOSE directions
- Max. opening speed 19 cm/s
- Max. 150 door cycles per day
- Max. 10 door cycles per hour
- Integrated control with push button DTH-R
- Optional external control 360 (prepared for traffic control)
- Small side room of only 200 mm
- No installations or wiring on the door leaf ¹⁾
- Standby approx. 1 W ²⁾
- Max. door width 6000 mm
- Max. door height 4500 mm

¹⁾ Except for doors with wicket door

²⁾ If no other electrical accessories are connected

→ In combination with the AC72 supply air control unit, industrial sectional doors are suitable for smoke extraction concepts. For further information, see page 96.

Fitting versions

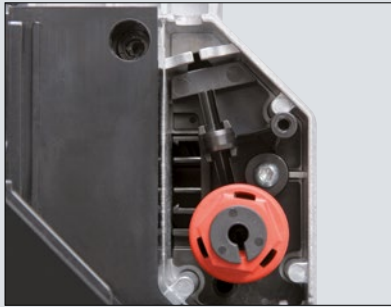
Diagonal **1**

Vertical **2**

Safe “CLOSE door” travel with reduced speed

All OPEN door travel as well as CLOSE door travel above a 2500 mm opening height takes place at a speed of up to approx. 19 cm/s. With an opening height below 2500 mm, CLOSE door travel must be set to approx. 10 cm/s for safety reasons. With the optional leading photocell or safety edge, this restriction no longer applies, i.e. the door opens and closes at approx. 19 cm/s.

→ Watch the short film “WA 300 S4” on YouTube or www.hormann.co.uk/media-centre



Emergency / maintenance release directly on the operator

During the statutory annual inspection work, the operator does not have to be laboriously removed from the barrel. This saves you time and money. The emergency / maintenance release can be converted to a secured release at any time.



Combination control 420 Si / 420 Ti for operator and dock leveller

This easy-to-fit solution combines door operation with a standard dock leveller control in one housing. The control housing is prepared for retrofitting, e.g. with option relay HOR1-300 for OPEN limit switch reporting for dock leveller release. Optionally available for operator WA 300 S4 with integrated control.



Battery HNA-300

With this emergency power supply in an external housing, you can bypass network power failures for up to 18 hours and max. 5 door cycles (dependent on the temperature and charge level). The emergency battery recharges itself during normal operation. Optionally available for operator WA 300 S4 with integrated control.



**Soft start
Soft stop**

Quiet, gentle door travel sustainably increases the service life of the door system.



**Easy to fit
and service**

The standard power limit means that no installations such as safety edges or rope failure devices are required on the door leaf for doors without a wicket door. This reduces costs and the risk of repairs and other services.



**Lower investments,
lower consumption**

The price of the WA 300 S4 is approx. 30% lower than a three-phase drive. The daily power consumption is also up to 50% less.

Shaft operators

WA 500 / WA 500 FU



WA 500

230 Volt 1-phase current

- Max. opening speed 0.3 m/s
- Max. 12 door cycles (OPEN-CLOSE) per hour¹⁾
- Max. door leaf weight 350 kg
- Max. door width 4500 mm
- Max. door height 4500 mm
- Can be combined with controls 545, 560
- Standby under 2 W²⁾

400 V 3-phase current

- Max. opening speed 0.3 m/s
- Max. 15 door cycles (OPEN-CLOSE) per hour¹⁾
- Optionally with increased on-time of max. 20 door cycles (OPEN-CLOSE) per hour¹⁾
- Exceptionally smooth running
- Long on-time
- No door size restriction
- Can be combined with controls 545, 560
- Standby under 2 W²⁾

WA 500 FU

230 Volt 1-phase current

- Soft start and soft stop for gentle door travel
- Max. opening speed 1.0 m/s³⁾
- Max. 25 door cycles (OPEN-CLOSE) per hour¹⁾
- Optionally with increased on-time of max. 30 door cycles (OPEN-CLOSE) per hour¹⁾
- Constant door travel speed also with track applications H and V **.EUROPEAN PATENT**
- Can be combined with controls 545, 560
- Standby under 2 W²⁾

Only from Hörmann

Constant door travel speed
even with track application H and V



**approx. 80%
less electricity costs²⁾**

¹⁾ At a maximum ambient temperature of +40 °C
5 more door cycles (OPEN-CLOSE) per hour are possible

²⁾ Power consumption in energy saving mode without
connected accessories

³⁾ With chain box and control 560



Emergency / maintenance release as standard

During the statutory annual inspection and maintenance work, the operator does not have to be laboriously removed from the spring shaft. This saves you time and money. The emergency / maintenance release is pre-equipped for secure release and can be extended at any time without having to convert the release.



Optional controls for emergency / maintenance release:

Emergency crank handle

The low-cost option is available in two versions, as a fixed crank handle or jointed emergency crank handle. Retrofitting with an emergency hand chain is possible.



Emergency hand chain

Through a combination of the emergency hand chain and the optional secured release, the door can be released or operated from the floor.



**Soft start
Soft stop**

Operator WA 500 FU

The frequency converter control takes stress off all the mechanical door elements, guaranteeing almost wear-free, quiet door travel.



Opening speed up to 1.0 m/s

Operator WA 500 FU with chain box and control 560

Shaft operator WA 500 FU impresses with an opening speed of up to 1 m/s, streamlining workflows, speeding up logistics processes and reducing thermal losses.

→ Watch the short film “Speed comparison” on YouTube or www.hormann.co.uk/media-centre



**Adaptive
Door action check**

Operator WA 500 FU

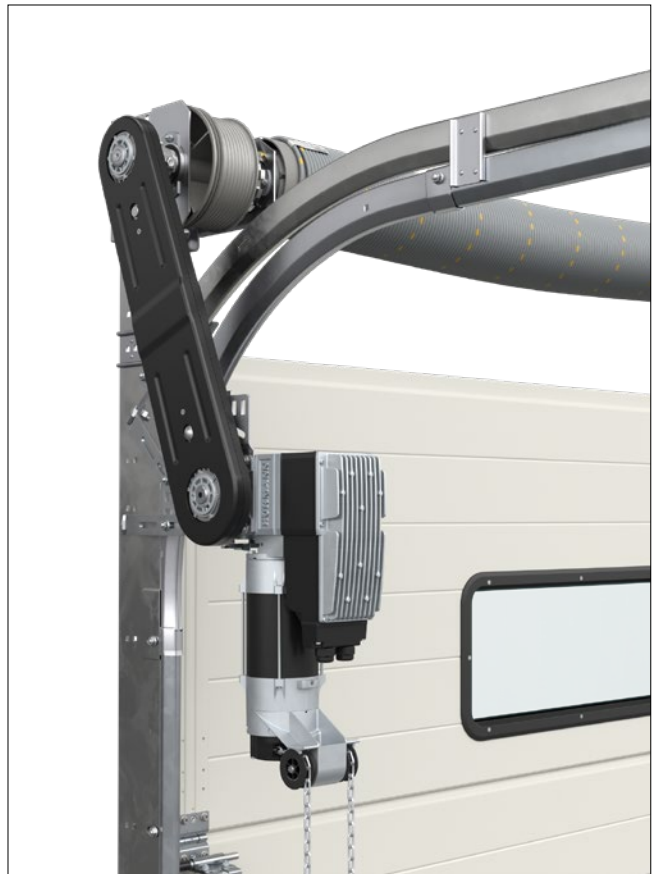
The frequency converter operators WA 500 FU / ITO 500 FU with intelligent speed control feature a compact design with high torques over a large speed range. The adaptive door action check recognises uneven door travel going beyond typical fluctuations, for example caused by reduced spring tension. In this case, the operators automatically switch to a temporary protection mode, signalling to the operator that the door system requires maintenance.



Adaptive door action check for the WA 500 FU operator (European patent)

Shaft operators, direct drive operators

Fitting versions



Operator for flange-mounting

WA 500, WA 500 FU (fig. above)

The flange-mounted version is quickly and easily mounted on the on the spring shaft and requires significantly less sideroom than push-on solutions from other suppliers.

Operator with chain box

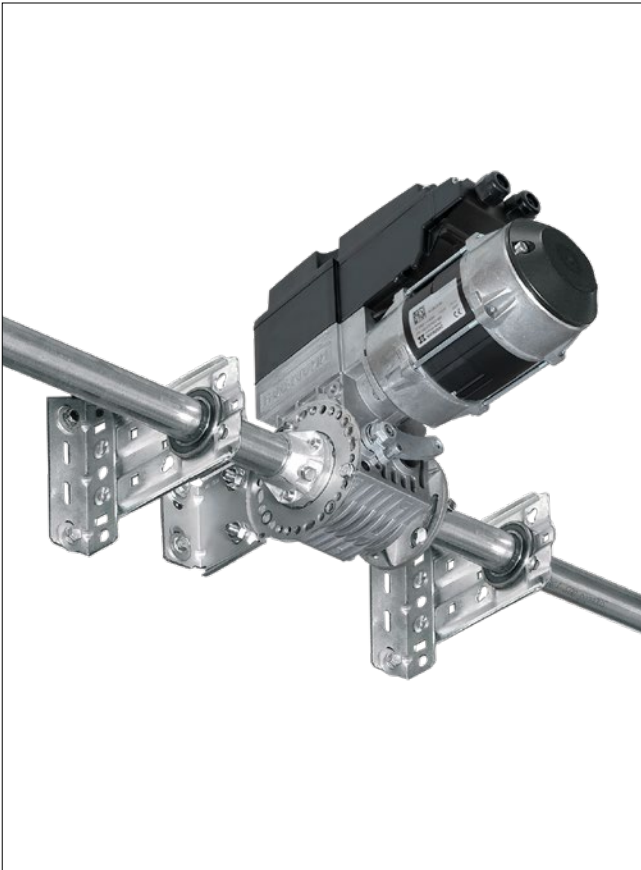
WA 500, WA 500 FU (Fig. above)

We recommend operators with chain box for all door types up to a height of 7500 mm if there is only sideroom of up to 200 mm. For track applications L and LD, an operator with chain box is required. Due to the indirect transmission of forces, the door is subjected to minimum wear and friction.



1.0 m/s opening speed

Operator WA 500 FU with chain box and control 560



Direct drive operator S140

(not shown)

- Ready-to-fit direct drive operator with rope failure device and integral catch safety device
- Power input: 3-phase current: 1.1 kW
- Protection category IP 65 (jet-water protected)
- Electronic absolute encoder (AWG) for determining the door position
- Microprocessor control unit in separate housing with integrated OPEN membrane push button, miniature lock
- Self-monitoring safety edge via leading photocell VL1-LE including protective covers
- Connection cable with CEE plug in protection category IP 44 (splash-water protected)
- Fitting of the control immediately next to the sectional door, plug-in door leaf sensors
- Including lintel trap guard EZS 1
- Including radio transmission (elimination of the coiled cable)
- Opening with impulse
- Closing with impulse
- Max. door leaf weight 1080 kg
- Max. door width 10000 mm
- Max. door height 8000 mm
- Can be combined with controls 445 R, 460 R

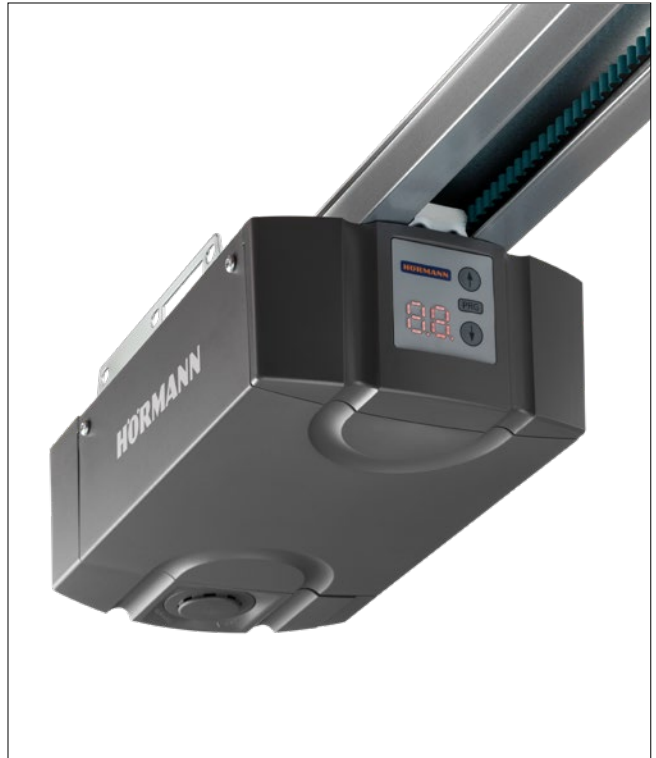
Operator for centre mounting

WA 500 M, WA 500 M FU

This version is mounted in the centre of the spring shaft so that no additional lateral stop is required. Please observe the minimum headroom. The operator is supplied as standard with a secure release and is suitable for almost all track applications.

Operators with rail

For normal, low camber and tension spring track application



ITO 500 FU

- Soft start and soft stop for quiet and gentle gentle door travel
- **Max. opening speed 0.5 m/s**
- **Max. 25 door cycles (OPEN-CLOSE) per hour***
- Adaptive door action check (further information can be found on page 85)
- No additional sideroom required
- Standard emergency / maintenance release via Bowden cable on the slide carriage
- Emergency / maintenance release possible from outside
- Optional secured release inside / outside (ideal for use on facade doors)
- **Max. door height 4500 mm**
- **For normal fittings (N, ND) and low headroom track application (L, LD)**
- For doors with wicket door on request

* At a maximum ambient temperature of +40 °C
5 more door cycles are possible

Operator SupraMatic HT

- Soft start and soft stop for quiet and gentle gentle door travel
- **Max. opening speed approx. 0.22 m/s**
- **Max. 20 door cycles (OPEN-CLOSE) per hour**
- **Tensile and compressive force 1000 N (short-term peak force 1200 N)**
- Integrated control electronics incl. 2-fold 7-segment display for easy setting of the operator functions directly on the operator
- Optional external control 360 (for connecting traffic control, warning lights or additional prints)
- Patented door locking mechanism in the operator rail with emergency / maintenance release from the inside
- Connecting lead with CEE plug, second suspension
- For doors with a spring safety device
- **up to 6750 mm width (7000 mm on request) or 3000 mm height with torsion spring, 4000 mm height with tension spring**
- **For normal fitting (N), low headroom track application (L) and tension spring track application (Z)**
- For doors with wicket door, ALR F42 Glazing and real glass on request
- Not for sectional doors with 67 mm depth



0.5 m/s opening speed

For operator ITO 500 FU with control 560

Operators with rail

For tension spring track application



SupraMatic H4 operator

- Soft start and soft stop for quiet and gentle gentle door travel
- **Max. opening speed approx. 0.25 m/s**
- **Max. 20 door cycles (OPEN-CLOSE) per hour**
- **Tensile and compressive force 1000 N (short-term peak force 1200 N)**
- Integrated bluetooth receiver that can be switched on and off for smart operation with the BlueSecur app
- Networked with Smart Home systems via the standard HCP interface
- Integrated control electronics incl. 2-fold 7-segment display for easy setting of the operator functions directly on the operator
- LED lighting (60 LEDs)
- Patented door locking mechanism in the operator rail with emergency / maintenance release from the inside
- Connecting lead with Euro plug
- **Max. door leaf surface 18 m²**
- **For tension spring track application (Z)**

SupraMatic P4 operator

- Soft start and soft stop for quiet and gentle gentle door travel
- **Max. opening speed approx. 0.28 m/s**
- **Max. 10 door cycles (OPEN-CLOSE) per hour**
- **Tensile and compressive force 750 N (short-term peak force 1000 N)**
- Integrated bluetooth receiver that can be switched on and off for smart operation with the BlueSecur app
- Networked with Smart Home systems via the standard HCP interface
- Integrated control electronics incl. 2-fold 7-segment display for easy setting of the operator functions directly on the operator
- LED lighting (30 LEDs, LED running light)
- Patented door locking mechanism in the operator rail with emergency / maintenance release from the inside
- Connecting lead with Euro plug
- **Max. door leaf surface 15 m²**
- **For tension spring track application (Z)**

Operators with rail

For tension spring track application



SupraMatic E4 operator

- Soft start and soft stop for quiet and gentle gentle door travel
- **Max. opening speed approx. 0.25 m/s**
- **Max. 10 door cycles (OPEN-CLOSE) per hour**
- **Tensile and compressive force 650 N (short-term peak force 800 N)**
- Integrated bluetooth receiver that can be switched on and off for smart operation with the BlueSecur app
- Networked with Smart Home systems via the standard HCP interface
- Integrated control electronics incl. 2-fold 7-segment display for easy setting of the operator functions directly on the operator
- LED lighting (20 LEDs)
- Patented door locking mechanism in the operator rail with emergency / maintenance release from the inside
- Connecting lead with Euro plug
- **Max. door leaf surface 13.75 m²**
- **For tension spring track application (Z)**

ProMatic 4 operator

- Soft start and soft stop for quiet and gentle gentle door travel
- **Max. opening speed approx. 0.20 m/s**
- **Max. 10 door cycles (OPEN-CLOSE) per hour**
- **Tensile and compressive force 650 N (short-term peak force 800 N)**
- Optional bluetooth receiver
- Networked with Smart Home systems via the standard HCP interface
- LED lighting (10 LEDs)
- Patented door locking mechanism in the operator rail with emergency / maintenance release from the inside
- Connecting lead with Euro plug
- **Max. door leaf surface 13.75 m²**
- **For tension spring track application (Z)**

Releases and emergency operation

For convenient operation

Secured release inside (optional) **1**

- For the convenient release of the operator from the floor

Secured external ASE release (optional) **2**

- For release from the outside (required for halls halls without second access)
- Lockable die-cast housing with profile half cylinder
- Dimensions: 83 × 133 × 50 mm (W × H × D)

Emergency operation / emergency actuation

- Recommended for doors over 3000 mm and fire station doors
- Secured release is required
- Fulfils the requirements of the fire brigade directive DIN 14092 (depth 42 to 5000 mm resp. depth 67 to door width 5500 mm)

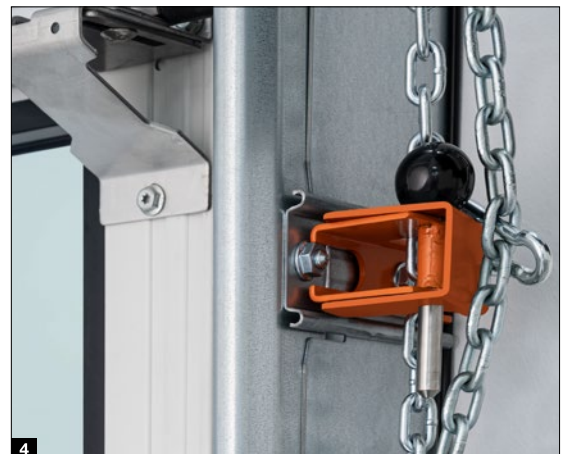
Push rod (optional) **3**

- Not available for doors with wicket door

Manual for emergency operation of operator gates (optional) **4**

- Compactly fitted to the door frame

→ Watch the short film “Manual emergency operation” on YouTube or www.hormann.co.uk/media-centre



Controls

Compatible system solutions



Internal control unit
WA 300 S4

External control unit
360

Impulse sequence control
445 R

Comfort control
460 R

Control 545

Control 560

Operators

WA 300 S4

S75, S140

WA 500, WA 500 FU, ITO 500 FU

Functions / features

Control and operator can be fitted separately		●	●	●	●	●
Illuminated keypad						●
Smart installation with BlueControl app via Bluetooth as standard					●	●
Adjustment work can be conveniently done directly on the control		●	●	●	●	●
Soft start and soft stop	●	●			● ¹⁰⁾	● ¹⁰⁾
Adjustable high-speed opening and closing (depending on track application)	● ¹⁾	● ¹⁾			●	●
Power limit in OPEN / CLOSE directions	● ²⁾	● ²⁾			● ¹⁰⁾	● ¹⁰⁾
Integrated Open / Stop / Close operation	●	●	●	●	●	●
Second opening height with additional button in the control cover	○ ³⁾	●		●		●
7-segment display with menu reading from outside (maintenance, cycle and operating hours counter as well as fault analysis)		Double	Double	Double	Quadruple	Quadruple
Extension possible with external radio receiver	●	●	●	●	●	●
Query of the gate position	○ ⁴⁾	○ ⁵⁾	○ ⁵⁾	○ ⁵⁾	○ ⁶⁾	○ ⁶⁾
2 timers for programming scenarios in 2 different periods of time						●
Option relay as standard		●				●
HCP bus interface for intelligent accessories					●	●
Automatic timer	● ⁷⁾	● ⁷⁾		● ⁷⁾	●	●
Traffic control ⁷⁾		○		○		○
Connecting terminals for additional command units	●	●	●	●	●	●
Power supply	230 V	230 V	400 / 230 V	400 / 230 V	400 / 230 V	400 / 230 V
Connection cable with CEE plug ⁸⁾ (IP 44)	●	●	●	●	●	●
Main switch integrated into control housing	○ ⁹⁾	○	○	○	○	○
Energy-saving function					●	●
Protection class IP 65 (jet-water protected) for control unit and door leaf components	●	●	●	●	●	●

● = As standard

○ = With corresponding equipment with additional control, if applicable

¹⁾ In the CLOSE direction during operation without SKS / VL (during operation with SKS / VL, the door generally travels at high speed in the CLOSE direction)

²⁾ In accordance with EN 12453

³⁾ Possible in combination with UAP 1-300 and DTH-I or DTH-IM

⁴⁾ In combination with ESE BS, HS 5 BS

⁵⁾ In combination with HET-E2 24 BS, HS 5 BS and end-of-travel position feedback

⁶⁾ With ESE BS HCP

⁷⁾ Only in combination with an activating kit for warning lights and photocell, light grille or leading photocell VL1-LE / VL2-LE

⁸⁾ For controls with integrated main switch the connection cable is omitted

⁹⁾ External main switch possible or via control panel 300 U with integrated main switch

¹⁰⁾ Only with WA 500 FU and ITO 500 FU



Profile half cylinder
For all external controls



Main switch
For all external controls



Post STI 1
for fitting max. 2 control units with additional housing,
Colour: RAL 9006 White aluminium,
Dimensions: 200 x 1660 x 60 mm (W x H x D)



Radio transmission unit
for transmitting signals from the door leaf to the control unit via Bluetooth (no coiled cable), power supply via a powerful battery; connectable components: LE (low energy) optosensors, VL1-LE / VL2-LE leading photocell, 8k2 strip, rope failure device, wicket door contact, night bolt contact

For all controls



UPS system
For bridging power failures up to 2 hours and up to 4 door cycles, safety equipment, warning lights etc. remain in function, LED status display, automatic battery test, overvoltage filter, protection category: IP 20
Dimensions: 560 x 235 x 260 mm (W x H x D),

For the control units:
360, 545, 560



Battery unit
for control unit 545 / 560 incl. batteries; for buffering the time and date of the control unit if it is not supplied with mains voltage for longer than the standard buffering period of 60 hours. The mains voltage for longer than the standard buffering period of 60 hours

BlueControl

Smart set-up and service of operator control via app

The BlueControl app makes initial start-up, service and maintenance of industrial doors with controls 560 and 545 even easier and more convenient. Scan all door data via a QR code on the door and configure all settings in plain text. Existing configurations can be saved and transferred to similar door systems. This reduces the time required for initial start-up by up to 50%. In case of malfunction, the operator can send the malfunction report directly to the Technical Service for specific assistance via the BlueControl app. This saves you time and money.

Advantages for the service technician

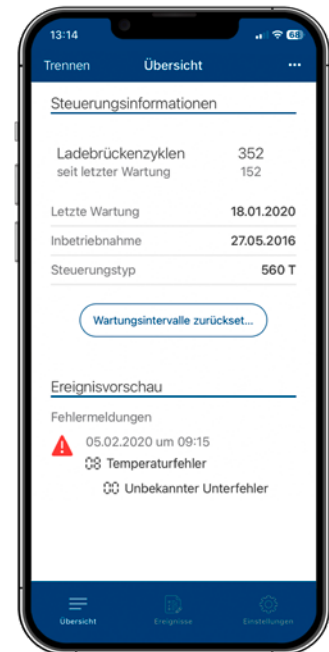
- Clear settings in plain text
- Simple scanning of the door data via a QR code
- Convenient saving and transfer of templates for programming identical systems
- Simple reset of maintenance counter

Advantages for the operator

- Clear app for free download and use
- On-site access via Bluetooth without internet connection
- Fast overview of all menu settings
- Practical readout of events and errors with timestamp
- Time-saving forwarding of control data via e-mail



BlueControl



→ Download the app from the Apple App Store or the Google Play Store.





NetControl

The current generation of industrial sectional doors can also be integrated into digital service and maintenance concepts. With the NetControl gateway, you get robust logistics processes with regard to your door system. This minimises downtimes through the preventive replacement of wear parts.

Advantages at a glance

- Monitoring and controlling industrial door and loading technology systems
- Transparent overview of door and / or dock leveller status on master computers
- Display of all important information, such as status, error messages, cycles, opening time and maintenance instructions
- Display of all connected controllers for easy analysis on a dashboard
- Simultaneous control of several doors as central control, e.g. for fire brigades
- Remote access through on-site solutions, such as VPN connection
- Cost-savings thanks to fewer and shorter service visits
- Fewer and shorter downtimes due to timely replacement of wearing parts
- Optimisation of service and maintenance scheduling through forward planning
- Lorry detection, status queries for side doors, locking activation, etc. with optional I / O card
- Simple connection of the NetControl gateway via the HCP bus of up to 3500 series control units
- Available for all Hörmann industrial doors with the 545 and 560 controls



Controls

Air inlet control AC72

For smoke extraction concepts with industrial doors

Smoke and heat extraction systems are an essential part of preventive fire protection and personal safety. In the event of fire, windows and transom lights in the facade and ceiling area are opened, allowing smoke and fumes to be discharged from the building. At the same time, fresh air is supplied from below via building openings such as supply air flaps in the building façade.

Thanks to the air inlet control AC72, door systems can also be integrated into smoke extraction concepts to securely supply fresh air. When the fire alarm system is triggered, the AC72 automatically transmits the impulse for door opening to the required opening height within 60 seconds. Additionally, the AC72 complies with the general requirements for smoke extraction systems, such as monitored battery operation in case of power failure for 72 hours. By integrating the industrial doors into the smoke extraction concepts of your building, you save the investment and installation costs for additional ventilation flaps. And because fewer doors need to be integrated into the facade, this improves the building's thermal insulation as well.

- Fulfils the requirements of FVLR Directive 13 (trade association for daylight and smoke ventilation): Downstream openings for smoke and heat exhaust ventilation systems
- Conforms to product standard for doors DIN EN 13241

Supply air control based on

DIN EN 12101-2/3 and DIN 18 232-9 (8)

- Automatic opening within 60 seconds
- Monitored battery operation in case of power failure for 72 hours
- Monitoring of the line from the RWA to the AC72

Protection goals for supporting self-rescue and third-party rescue

- Support of firefighting operations
- Prevention of uncontrolled smoke propagation
- Delaying or preventing a flash-over
- Property protection
- Containment of environmental damage

RWA smoke and heat extraction

- Smoke extraction in the event of fire through a stable low-smoke layer near the floor (through the targeted use of supply air)
- To ensure escape and rescue routes

→ Watch the short film "AC72 supply air control" on YouTube or www.hormann.co.uk/media-centre



**Operator / control unit combinations
for single doors:**

- Operator WA 300 R S4 with control 300 U



**Operator / control unit combinations
for doors with dock leveller:**

- Operator WA 300 R S4 with control 420 Si / 420 Ti



Equipment

Closing edge safety device

Tip

Leading photocells VL1-LE

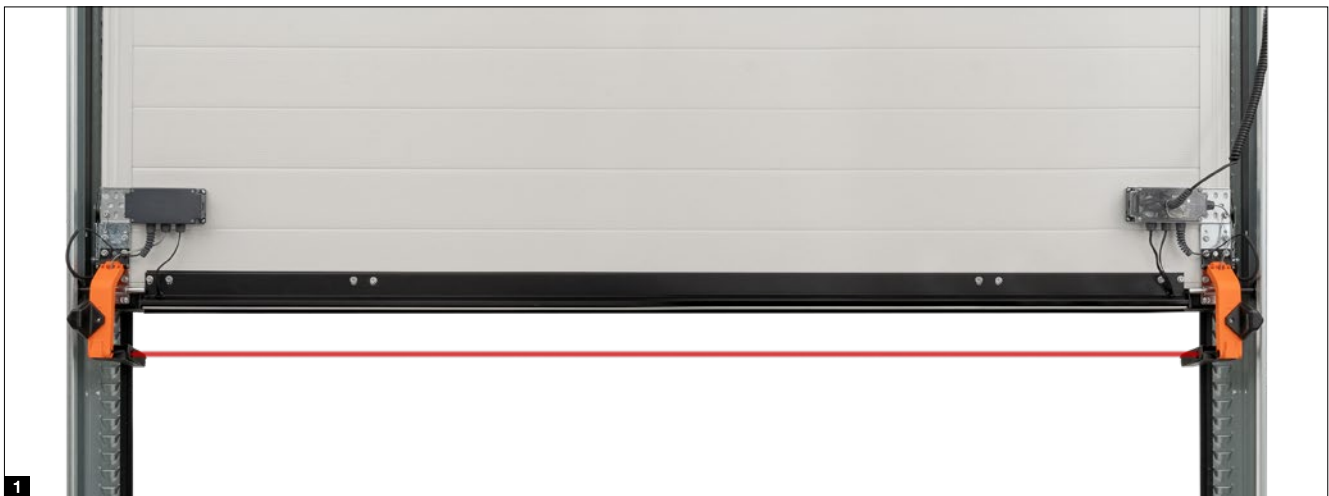
at no surcharge for the operators
WA 500, WA 500 FU, ITO 500 FU

Safety edges with optosensors or with leading photocells

All power-driven Hörmann industrial sectional doors with operators WA 500, WA 500 FU, ITO 500 FU are equipped with a self-monitoring safety edge with optosensors as standard. You can also select the leading photocell VL1-LE **1** for non-contact door monitoring of the closing edge at no surcharge. This solution offers you increased safety, faster door travel and lower inspection and maintenance costs.

Leading photocell

With the leading photocells VL1-LE **2** and VL2-LE **3** you can increase the safety of Hörmann industrial sectional doors. The sensors monitor the bottom edge of the sectional door. Obstacles or persons are quickly recognised and the sectional door reverses before contact is made. Another benefit is the faster door travel speed.



Benefits of leading photocells

Increased safety

Thanks to the non-contact automatic safety cut-out, persons and obstacles are quickly recognised without door contact. The door stops before contact is made and immediately travels upwards. This virtually eliminates the risk of damage or injury.

Faster door travel

The leading photocell can close the door at a speed of up to 30 cm/s. This reduces your energy costs due to shortened door opening times.

Lower inspection and maintenance costs

Industrial doors with non-contact door monitoring approved for personal safety purposes do not need to have their closing force approved. This means you save the extra costs for the additional inspection in accordance with ASR A1.7.

Protection for people and materials

The lateral crash protection prevents damage to the swivel arm in the CLOSE position (fig. right).



Equipment

light grille

Light grille

Light grilles recognise people and obstacles without making contact. This virtually eliminates the risk of damage or injury. A safety edge with optosensors or additional photocells is not required.

Light grille HLG

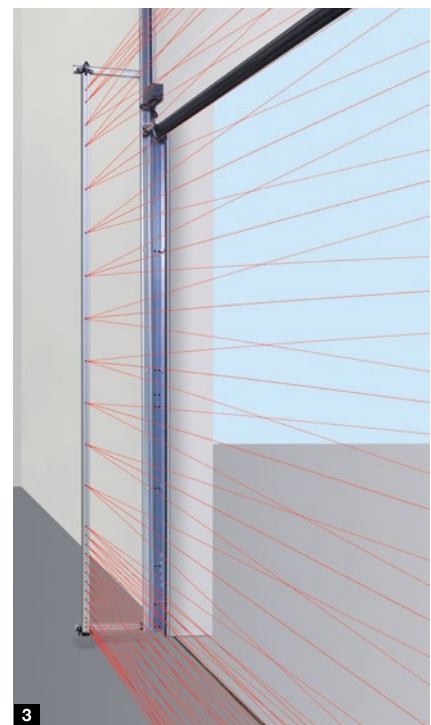
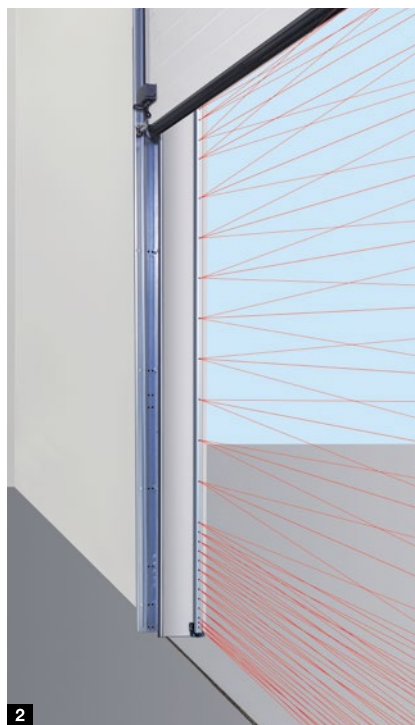
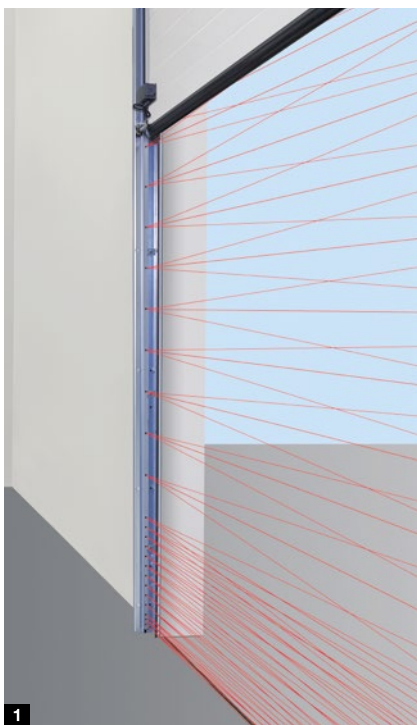
- Light grilles integrated in the door frame **1**
- Good protection against damage and accidental readjustments
- Fitting bracket for optimal fixing and alignment in the frame

Light grille HLG-V as advance protection

- Fitting on the outside of the façade, in the reveal **2** or on the door frame **3**
- Optionally integrated in the key switch post set STL **4** made of weather-resistant, anodised aluminium

Light grille HLG for doors with wicket door

- Double light grille for doors with wicket door with trip-free threshold
- Main closing edge safeguard up to a height of 2500 mm
- Fitting on the door frame and outside in the reveal **5**
- Radio transmission unit required (further information can be found on page 93)



- **Maximum safety**

particularly effective detection of persons and obstacles
due to the angled beams

- **Increased personal protection**

particularly close arrangement of sensors up to a height of 500 mm
(above FFL)

- **Reduced energy losses**

thanks to door closing at speeds of up to 1 m/s*

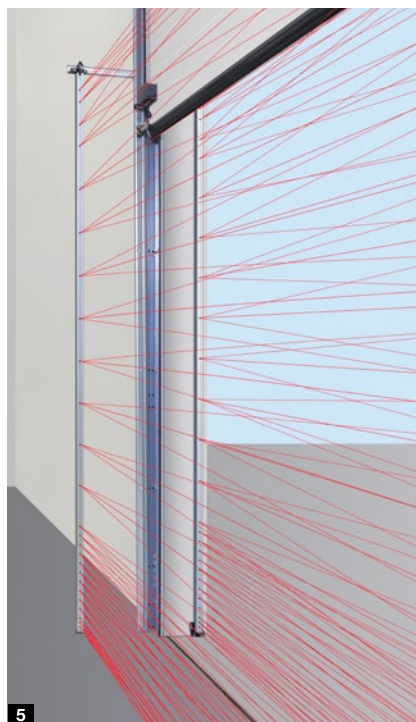
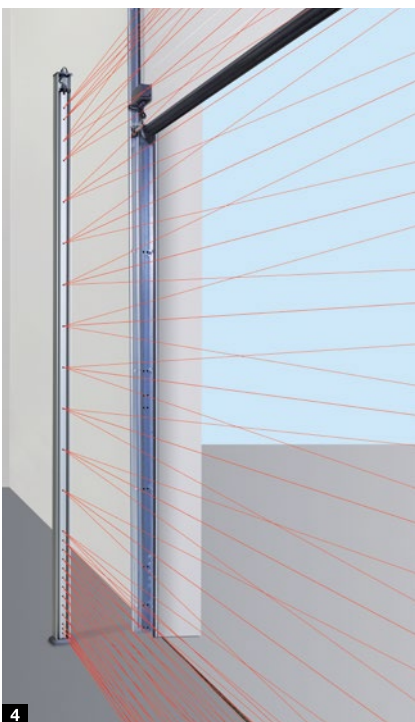
- **Simple retrofitting**

for existing doors with safety edges by means of
optosensors with the HLG light grille

- **Lower inspection and maintenance costs**

No need to test closing forces in accordance with ASR A1.7

* WA 500 FU and control units 560 up to a height of 2500 mm, depending on hardware
and size-dependent



Equipment

Motion detector and monitoring system

Photocells integrated in door frame

EL 401 **1**

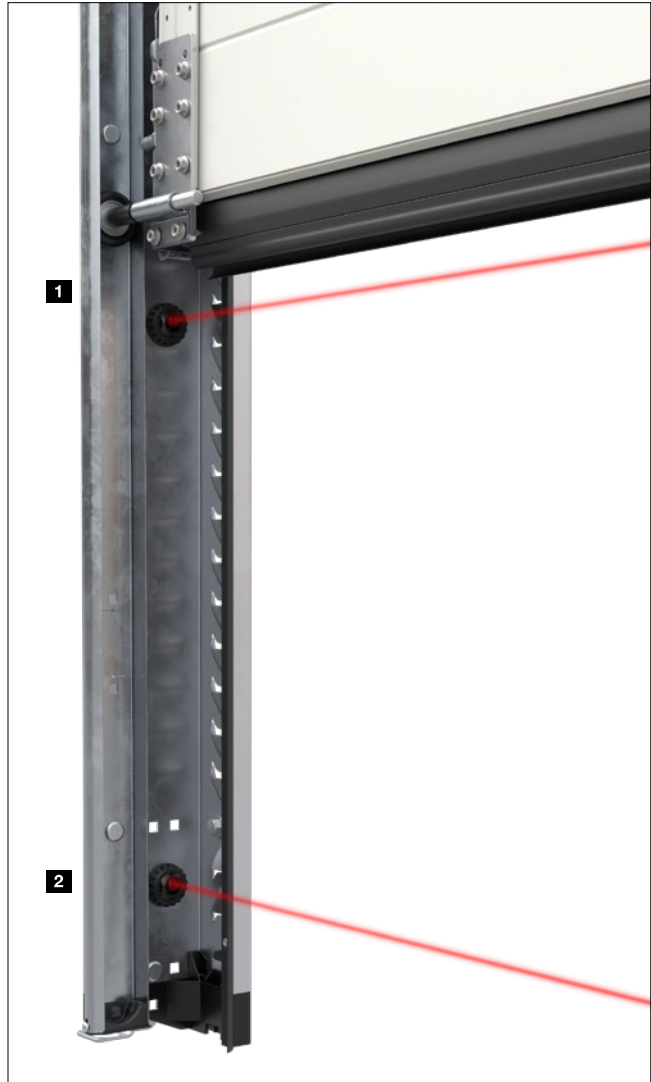
Fitting height 600 mm (property protection)

EL 501 **2**

Fitting height 125 mm (personal protection), cannot be combined with RC2 equipment

Both photocells can be ordered individually and combined for combined for full fuse protection.

- With separate transmitter and receiver
- The photocell is tested by the control prior to each downward movement
- Dimensions (W × H × D): Ø 25 mm
- Depth 55 mm
- Protection category IP67
- Not in combination with VL1-LE, VL2-LE or HLG



Reflection photocell RL 50 / RL 300

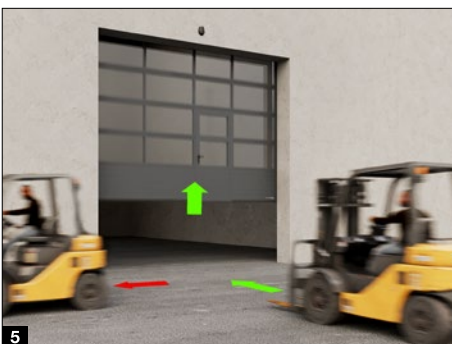
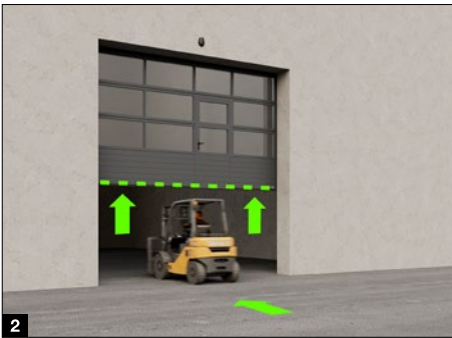
Photocell with transmitter/receiver module and reflector; photocell is tested by the control unit before each downward movement; connection via system cable (RL 50, length 2 m) or via 2-wire cable (RL 300, length 10 m); dimensions: 45 × 86 × 39 mm (W × H × D); protection category: IP 65; reflector up to 8 m range (standard): 30 × 60 mm (W × H), Reflector up to 12 m range (not shown): 80 mm diameter; optional weather protective cover (not shown); anti-fog coating



One-way photocell EL 51

Photocell with separate transmitter and receiver; the photocell is tested by the control prior to each downward movement; connection via system cable; max. range 8 m; dimensions with fitting bracket: 45 × 85 × 31 mm (W × H × D); protection category: IP 65; optional weather protective cover (not shown)





Widescan

Thanks to laser technology, the high-end motion detector and monitoring system guarantees operational safety, even with different floor coverings. The laser field acts as a reliable door monitor. It detects how fast and in which direction the object is travelling, ensuring optimum opening and closing response times. This minimises a door's hold time and saves energy.

- Also suitable for outdoor use as it is resistant to different weather conditions **1**
- Reliable apron protection as well as fast and targeted automatic door opening
- Complete door opening for vehicles with a height of at least 2400 mm*
- Energy-saving ventilation position with adjustable opening height for vehicles with a maximum height of 2400 mm*. **2**
- Minimises the hold time of the door to save energy **3**
- Easy to hide objects permanently or temporarily in the detection range **4**
- Deactivation of cross-traffic and pedestrian traffic **5**
- Virtual pull switch enables the door opening by people or vehicles when they are at a defined point
- Visible LED spots on the floor assist during setup
- Easy connection to the operator control with plug-in wiring
- Bluetooth module for convenient configuration via app, e.g. with visualisation of the set field sizes in real-time

* Can be individually set if required

Accessories

Hand transmitter, radio switch, receiver



HS 5 BS
4 button functions plus query button, high-gloss surface black or white



HS 5 BS
4 button functions, plus query button, textured surface matt black



HS 4 BS
4 button functions, textured surface matt black



HS 1 BS
1 button function, textured surface matt black



HSE 1 BS
1 button function, including eyelet for key ring, textured surface matt black



HSE 4 BS
4 button functions, incl. eyelet for key ring, textured surface matt black with chrome or plastic caps



4-button security hand transmitter HSS 4 BS
Additional function: Copy protection for hand transmitter coding, with chrome caps



Only from Hörmann

Modern radio system

The bi-directional BiSecur radio system is based on future-oriented technology for the convenient and secure operation of industrial doors.

The extremely secure BiSecur encryption protocol makes sure that no one can copy your radio signal. It was tested and certified by security experts at Bochum university.

Your advantages

- 128-bit encryption with the same high security level as online banking
- Interference-resistant radio signal with a stable range
- Convenient querying of the door position*
- Backwards compatible, i.e. radio receivers with the frequency 868 MHz (2005 to June 2012) can also be operated with BiSecur control elements

* for WA 300 S4 with optional bidirectional receiver ESEi BS, for all other operators with optional bidirectional receiver HET-E2 24 BS and feedback of the end-of-travel positions



**Radio code switch
FCT 3 BS**

3 functions, with illuminated buttons, surface-mounted or recessed fitting possible, plastic housing in Light grey RAL 7040



**Radio code switch
FCT 10 BS**

10 functions, with illuminated buttons and hinged cover, recessed or surface-mounted fitting possible, plastic housing painted in RAL 9006 White aluminium



**Radio finger-scan
FFL 25 BS**

2 functions and up to 25 finger-prints, with hinged cover, recessed and surface-mounted fitting possible, plastic housing painted in RAL 9006 White aluminium



Radio radar button FSR 1 BS

Sensor for non-contact opening opening, plastic housing, IP 41 for recessed or surface-mounted fitting

Radar button HTR 1-230 / 1 - 24
Wired version with 230 V or 24 V



**Industrial hand transmitter
HSI 3 BS, HSI 6 BS, HSI 15 BS**

for the control of up to 3 gates (HSI 3 BS), 6 gates (HSI 6 BS) or 15 buttons (HSI 15 BS), with extra large buttons for easier operation with operation with work gloves, shock-resistant housing; protection category: IP 65



**Industrial hand transmitter
HSI BS**

For control of up to 1000 gates, with display and extra-large speed dialling buttons for easier operation with work gloves, transfer of hand-held transmitter codes to other devices possible, connection to external power supply via optional connection cable



**3-channel receiver
HEI 3 BS**

for the control of 3 functions

**Bi-directional receiver
ESEi BS**

For querying the door position



**1-channel relay receiver
HER 1 BS**

1 potential-free relay output with status query



**2-channel relay receiver
HER 2 BS**

2 potential-free relay outputs with status query and external antenna



**2-channel relay receiver
HET-E2 24 BS**

2 volt-free relay outputs for direction selection, one 2-pole input for volt-free limit switch reporting OPEN / CLOSE (for querying the door position)



**4-channel relay receiver
HER 4 BS**

4 volt-free relay outputs with status query

Accessories

Button



Push button DTH-R

Separate control of both running directions; separate stop button

Dimensions:
90 × 160 × 55 mm (W × H × D)
protection category: IP 65



Push button DTH-RM

Separate control of both running directions; separate stop button, with miniature lock:

Operation of the operator is deactivated – moving the operator is no longer possible; 2 keys included in the scope of delivery

Dimensions:
90 × 160 × 55 mm (W × H × D)
Protection category: IP 65



Push button DTH-I

For moving the door to the OPEN / CLOSE positions; separate stop button for interrupting door travel; 1/2-open button for opening the door to the programmed intermediate end position

Dimensions:
90 × 160 × 55 mm (W × H × D)
Protection category: IP 65

Note:
With integrated WA 300 S4 control unit only in conjunction with UAP 1-300, not for 445/545 control unit.



DTH-IM push button

For moving the door to the OPEN / CLOSE positions; separate stop button for interrupting door travel; 1/2-open button for opening the door to the programmed intermediate end position, with miniature lock: operation of the operator is deactivated, it is no longer possible to move the operator; 2 keys included in the scope of delivery

Dimensions:
90 × 160 × 55 mm (W × H × D)
protection category: IP 65

Note:
With integrated WA 300 S4 control unit only in conjunction with UAP 1-300, not for 445/545 control unit.



Push button DT 02

open or close via a command button; separate stop button

Dimensions:
75 × 145 × 70 mm (W × H × D),
protection category: IP 65



Push button DT 03

Separate control of both running directions; separate stop button

Dimensions:
75 × 180 × 70 mm (W × H × D),
protection category: IP 65



Push button DT 04

Separate control of both running directions; separate stop button; partial opening (separate button)

Dimensions:
75 × 225 × 70 mm (W × H × D),
protection category: IP 65

Note:
With integrated WA 300 S4 control unit only in conjunction with UAP 1-300, not for 445/545 control unit.



Push button DTN A 30

For separate control of both operational directions; stop button is a push-to-lock button which, once pressed, stays depressed in order to prevent unauthorised operation; subsequent actuation is then only possible through unlocking with a key (2 keys included in the scope of delivery)

Dimensions:
75 × 180 × 105 mm (W × H × D),
protection category: IP 65



Push button DTP 02

open or close via a command button; separate stop button, operating indicator light for control voltage; lockable with profile half cylinder (available as accessories)

Dimensions:
77 x 235 x 70 mm (W x H x D),
Protection category: IP 44



Push button DTP 03

for separate control of the two both running directions; separate stop button, operating indicator light for control voltage; lockable with profile half cylinder (available as accessories)

Dimensions:
77 x 270 x 70 mm (W x H x D),
Protection category: IP 44



Emergency stop switch DTN 10

Quick decommissioning of the door system; button (mushroom knob) with grid; surface-mounted fitting

Dimensions:
93 x 93 x 95 mm (W x H x D),
protection category: IP 65



Emergency stop switch DTNG 10

Quick immobilisation of the door system; push-to-lock mushroom button; surface-mounted

Dimensions:
93 x 93 x 95 mm (W x H x D),
protection category: IP 65

Note:

The lockable function serves to isolate the control voltage and immobilises the command units. Profile half cylinders are not included in the scope of delivery for the push buttons.



Key switch ESU 30

with 3 keys, flush-mounted version, pulse or OPEN-CLOSE function selectable;

Dimensions of the switch box:
60 mm (d), 58 mm (D),
Panel dimensions:
90 x 100 mm (W x H),
Recess in the brickwork:
65 mm (d), 60 mm (D);
Protection category: IP 54

Surface-mounted version ESA 30

(without illustration)
Dimensions:
73 x 73 x 50 mm (W x H x D)



Key switch STAP 50

with 3 keys,
Surface-mounted version;
Dimensions:
80 x 80 x 63 mm (W x H x D);
Protection category: IP 54

Key switch STUP 50

with 3 keys,
Flush-mounted version
(without illustration);
Dimensions:
80 x 80 mm (W x H);
Protection category: IP 54



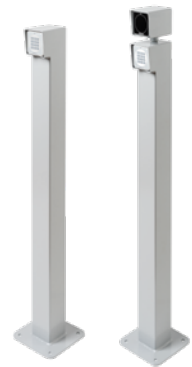
Pull switch ZT 2 with cord

Pulse control for opening or closing

Dimensions:
60 x 90 x 55 mm (W x H x D);
Length of the pull cord: 3.2 m;
protection category: IP 65

Cantilever arm KA1 (not shown)

Projection 1680 – 3080 mm
can be used with ZT 2



Posts

with screw base for fitting on the floor, surface in RAL 9006 White aluminium, tube 90 x 90 mm, also available as concreting version

Post STN 1

To hold 1 command unit on the surface, height 1050 mm

Post STN 1-1

For mounting 2 command units or 1 command unit and 1 warning light; height 1200 mm

For command units:
CTR 1b-1, CTR 3b-1, CTV 3-1, CTP 3-1, TTR 1000-1, FL 150, STUP 50, LED double warning lights red / green

Accessories

Button, detector



Code switch CTR 1b-1, CTR 3b-1
for 1 (CTR 1b-1) or 3 (CTR 3b-1) functions, with illuminated buttons

Dimensions:
80 × 80 × 15 mm (W × H × D)



Code switch CTV 3-1
For 3 functions, with particularly robust metal keypad

Dimensions:
80 × 80 × 15 mm (W × H × D)



Code switch CTP 3
For 3 functions, with illuminated lettering and touch-sensitive surface

Dimensions:
80 × 80 × 15 mm (W × H × D)



Decoder housing
For code switches CTR 1b-1, CTR 3b-1, CTV 3-1, CTP 3

Dimensions:
140 × 130 × 50 mm (W × H × D),
Switching capacity:
2.5 A / 30 V DC
500 W / 250 V AC



Finger-scan FL 150
For 2 functions, up to 150 fingerprints can be saved

Dimensions:
80 × 80 × 13 mm (W × H × D);
Decoder housing:
70 × 275 × 50 mm (W × H × D);
Switching capacity:
2.0 A / 30 V DC



Radar movement detector RBM 2
For OPEN impulse with directional recognition, max. fitting height: 6 m; optional remote control for radar movement detector

Dimensions:
155 × 132 × 58 mm (W × H × D);
Contact load:
24 AC / DC, 1 A (resistive load);
Protection category: IP 65



Transponder key switch TTR 1000-1
for 1 function, by transponder key or transponder card; up to 1000 keys or cards can be stored

Dimensions: 80 × 80 × 15 mm (W × H × D);
Decoder housing: 140 × 130 × 50 mm (W × H × D);
switching capacity: 2.5 A / 30 V DC; 500 W / 250 V AC





Bluetooth receiver HET-BLE

for operation via Hörmann BlueSecur app, impulse sequence control of industrial sectional doors

Dimensions:

110 × 45 × 40 mm (W × H × D)



Universal adapter print UAP 1-300

for WA 300 S4; pulse selection, partial opening function, limit switch reporting and signal light connection; with 2 m system cable

Dimensions:

150 × 70 × 52 mm (W × H × D); switching capacity max.: 30 V DC / 2.5 A (resistive load), 250 V AC / 500 W (resistive load); Protection category: IP 65



Option relay HOR 1-300

For WA 250 R S4, WA 300 R S4 or control 300 to control limit switch reporting or warning lights with 2 m connecting lead; optionally available for fitting in push button control 300 U (not shown)

Dimensions: 110 × 45 × 40 mm (W × H × D);

Switching capacity max.: 30 V DC / 2.5 A (resistive load), 250 V AC / 500 W (resistive load); Protection category: IP 44



Loxone gateway (Hörmann Air)

for control units 545, 560 for controlling Hörmann operators and control units via the Loxone Smart Home System



KNX gateway

For controls 545, 560 To control Hörmann operators and controls via the KNX building automation



WiFi gateway

For controls 545, 560 (incl. HCP adapter), WA 300 S4 integrated control, SupraMatic HT to control Hörmann operators and controls via Apple Home, Amazon Alexa or Google Home / Google Assistant.



Homematic IP gateway

for WA 300 S4 integrated control unit, SupraMatic HT for controlling Hörmann operators via the Homematic IP Smart Home System



DeltaDore gateway (X3D Gateway)

for WA 300 S4 integrated control unit, SupraMatic HT for controlling Hörmann operators via the DeltaDore Tydom Smart Home System



GSM Control

for control units 360, 445R, 460R, 545, 560 for opening the system by phone call and receiving status or fault messages via SMS

→ With the NetControl gateway, door control units can be intelligently networked with each other and integrated into local networks. For further information, see page 95.

Accessories

Activating kits, LED traffic lights



Multi-function circuit board for installation in existing housing or optionally in separate extension housing (Fig.)

Limit switch reporting, wiping pulse, collective fault message, Extension unit for control systems

Extension housing with quick-release fastener
Dimensions: 202 × 164 × 130 mm (W × H × D);
Protection category: IP 65

A circuit board can be optionally mounted in the control.



Digital weekly timer in a separate additional housing

The timer can switch command units on or off via a potential-free contact; extension unit for control systems (for installation in existing housing); Switching capacity: 230 V AC 2.5 A / 500 W, summer / winter time switchable, manual switching: automatic operation, switching preselection duration on / off
Duration Off

Extension housing with quick-release fastener
Dimensions: 202 × 164 × 130 mm (W × H × D);
Protection category: IP 65



Summer / winter activating kit in additional housing

Function for complete door opening and freely programmable intermediate end position; extension unit for control units

Extension housing with quick-release fastener
Dimensions: 202 × 164 × 130 mm (W × H × D);
Protection category: IP 65



Induction loop detector 1-channel, 24 V in separate additional housing

Suitable for one induction loop, induction loop detector with a normally open contact and a change-over contact

Induction loop detector 2-channel in separate additional housing

Suitable for two separate induction loops; induction loop detector with two potential-free make contacts; direction detection possible

Extension housing with quick-release fastener
Dimensions: 202 × 164 × 130 mm (W × H × D);
switching capacity: max. 2 A, 125 VA / 60 W; supplied without loop cable

Loop cable for induction loop: 50 m roll, cable designation: SIAF, cross-section: 1.5 mm², colour: brown





Signal light connection for installation in existing housing or optionally in separate extension housing (Fig.)

incl. 2 LED traffic lights TL40S ye; extension unit for control unit, with warning light connection for visual indication during door movement (weekly timer optional);
visual indication during door travel (weekly timer optional);
Applications: approach warning, automatic timer

After the set hold-open phase (0 – 480 s) has elapsed, the signal lights flash during the warning lights flash for the set pre-warning time (0 – 70 s).

Extension housing with quick-release fastener
Dimensions: 202 × 164 × 130 mm (W × H × D),
Contact load: 250 V AC; 2.5 A / 500 W;
Protection category: IP 65



Traffic control in separate additional housing or for installation in existing housing (only for 360, 560 control units)
incl. 2 LED traffic lights TL40S rd / gn
or 2 LED traffic lights TL40S rd / ye* / gn;
Extension unit for control unit, with signal light connection for visual display for entry and exit control (weekly timer optional);
Time of the green phase: adjustable 0 – 480 s,
Clearance phase time: adjustable 0 – 70 s

Extension housing with quick-release fastener
Dimensions: 202 × 164 × 130 mm (W × H × D),
Contact load: 250 V AC; 2.5 A / 500 W;
Protection category: IP 65

* Yellow is not required for traffic control



LED traffic light TL40S rd

1-flame red,
Supply voltage
100 – 240 V AC /
50 – 60 Hz
Nominal power
approx. 2 W
Protection category: IP 65

Dimensions:
180 × 250 × 290 mm
(W × H × D)

LED traffic light TL40S ye

1-flame yellow,
Supply voltage
100 – 240 V AC /
50 – 60 Hz
Nominal power
approx. 2 W
Protection category: IP 65

Dimensions:
180 × 250 × 290 mm
(W × H × D)

LED traffic light TL40S gn

1-flame green,
Supply voltage
100 – 240 V AC /
50 – 60 Hz
Nominal power
approx. 2 W
Protection category: IP 65

Dimensions:
180 × 250 × 290 mm
(W × H × D)

LED traffic light TL40S rd / gn

2-flame red / green,
Supply voltage
100 – 240 V AC /
50 – 60 Hz
Nominal power
approx. 2 W
Protection category: IP 65

Dimensions:
180 × 467 × 290 mm
(W × H × D)

LED traffic light TL40S rd / ye / gn

1-flame red/yellow / green,
Supply voltage 24 V DC
Nominal power
approx. 2 W
Protection category: IP 65

Dimensions:
180 × 250 × 290 mm
(W × H × D)

Performance characteristics

acc. to EN 13241

Door types	SPU F42	SPU 67 Thermo	APU F42	APU F42 Thermo	APU 67 Thermo	ALR F42	ALR F42 Thermo	ALR 67 Thermo
Wind load	Class according to EN 12424							
Door without wicket door	3 ²⁾ / 4 ^{1,2)}	3 ²⁾ / 4 ^{1,2)}	3 / 4 ¹⁾	3 / 4 ¹⁾	3 / 4 ¹⁾	3 / 4 ¹⁾	3 / 4 ¹⁾	3 / 4 ¹⁾
Door with wicket door	2 ²⁾ / 3 ^{1,2)}	2 ²⁾ / 3 ^{1,2)}	2 / 3 ¹⁾	2 / 3 ¹⁾	2 / 3 ¹⁾	2 / 3 ¹⁾	2 / 3 ¹⁾	2 / 3 ¹⁾
Water tightness	Class according to EN 12425							
Door without / with wicket door	3 (70 Pa)	3 (70 Pa)	3 (70 Pa)	3 (70 Pa)	3 (70 Pa)	3 (70 Pa)	3 (70 Pa)	3 (70 Pa)
Air permeability	Class according to EN 12426							
Door without wicket door	2 / 3 ^{3,5,6,7)}	2 / 4 ^{3,5,6,7)}	2	2	2 / 3 ^{5,6,7)}	2	2	2 / 3 ⁵⁾
Door with wicket door	1	1	1	1	1	1	1	1
Acoustic insulation³⁾	Rw [db] according to EN ISO 717-1							
Door without wicket door	25 ³⁾	25 ³⁾	23	23	23	23 / 30 ⁴⁾	23 / 30 ⁴⁾	23 / 30 ⁴⁾
Door with wicket door	24 ³⁾	24 ³⁾	22	22	22	22 / 29 ⁴⁾	22 / 29 ⁴⁾	22 / 29 ⁴⁾
Thermal insulation	U-value = W/(m ² ·K) according to EN 13241, Appendix B, for a door surface of 5000 × 5000 mm							
Door without / with wicket door								
Fitted door	1.0 / 1.2	0.62 / 0.82						
With ThermoFrame	0.94 / 1.2	0.51 / 0.75						
Synthetic double panes			3.4 / 3.6	2.9 / 3.1		3.6 / 3.8	3.0 / 3.2	
With ThermoFrame			3.3 / 3.6	2.8 / 3.1		3.6 / 3.8	3.0 / 3.2	
Synthetic triple panes			3.0 / 3.2	2.5 / 2.7	2.1 / 2.3	3.2 / 3.4	2.6 / 2.8	2.2 / 2.4
With ThermoFrame			2.9 / 3.1	2.4 / 2.6	2.0 / 2.2	3.1 / 3.4	2.5 / 2.8	2.1 / 2.3
Synthetic quadruple pane					1.8 / 2.0			1.9 / 2.1
With ThermoFrame					1.7 / 1.9			1.8 / 2.1
Double climatic pane			2.5 / 2.7	2.0 / 2.2	1.6 / 1.8	2.7 / 2.9	2.1 / 2.3	1.7 / 1.9
With ThermoFrame			2.4 / 2.6	1.9 / 2.1	1.5 / 1.7	2.6 / 2.8	2.0 / 2.2	1.6 / 1.8
Double real glass pane			3.4 / 3.6	2.9 / 3.1	2.6 / 2.8	3.6 / 3.8	3.0 / 3.2	2.7 / 2.9
With ThermoFrame			3.3 / 3.6	2.8 / 3.0	2.5 / 2.7	3.6 / 3.8	3.0 / 3.2	2.6 / 2.8
Single real glass pane								
With ThermoFrame								
PU sandwich infill								
With ThermoFrame								
Side doors	NT 60 for SPU	NT 60 for APU	NT 60 for ALR	NT 60 for ALR Vitraplan	NT 80 Thermo for SPU	NT 80 Thermo for APU	NT 80 Thermo for ALR	
Wind load	3C	3C	3C	3C	4C	4C	4C	
Class according to EN 12424								
Air permeability	3	3	3	3	3	3	3	
Class according to EN 12426								
Water tightness under heavy rain	1 A	1 A	1 A	1 A	1 A	1 A	1 A	
Unprotected, opening outwards								
Thermal insulation	2.9	4.2	4.7	4.7	1.6	2.2	2.4	
U-value = W/(m ² ·K) according to EN 13241, Appendix B, for a door size of 1250 × 2200 mm								

¹⁾ For door widths up to 4000 mm

²⁾ Lower class rating may apply for doors with compound window

³⁾ For doors without glazing frame

⁴⁾ Information refers to acoustic insulation value with real glass pane (optional)

⁵⁾ With ThermoFrame

⁶⁾ With optional increased air-tightness set

⁷⁾ Only for Micrograin surface finish

ALR F42 Glazing	ALR 67 Thermo Glazing	ALR F42 Vitraplan	ALR F42 Vitraplan AT	Glazings / infills	Ug value W/(m ² ·K)	tv value %	g value %
3 / 4 ¹⁾	3 / 4 ¹⁾	3 / 4 ¹⁾	3 / 4 ¹⁾	Synthetic panes			
				Single pane, 3 mm			
				Clear		88	
				Crystal structure		84	
				Double pane, 26 mm			
3 (70 Pa)	3 (70 Pa)	3 (70 Pa)	3 (70 Pa)	Clear	2.6	77	74
				Crystal structure	2.6	77	74
				Grey tinted	2.6	3	28
				White tinted (opal)	2.6	69	69
2	2 / 3 ⁵⁾	2	2	Triple pane, 26 mm			
				Clear	1.9	68	67
				Crystal structure	1.9	68	67
				Grey tinted	1.9	3	25
				White tinted (opal)	1.9	61	63
30	30	23	23	Triple pane, 51 mm			
				Clear	1.6	68	67
				Crystal structure	1.6	68	67
				Grey tinted	1.6	3	25
				White tinted (opal)	1.6	61	63
				Quadruple pane, 51 mm			
		3.2 / -		Clear	1.3	60	61
		3.2 / -		Crystal structure	1.3	60	61
		3.1 / -		Grey tinted	1.3	2	23
		3.1 / -		White tinted (opal)	1.3	54	58
				Polycarbonate panes			
2.7 / -	1.8 / -			Single pane, 6 mm			
2.6 / -	1.7 / -			Clear	-	-	-
3.8 / -	3.0 / -			Double pane, 26 mm			
3.8 / -	2.9 / -			Clear	2.7	81	75
6.1 / -				Triple pane, 51 mm			
6.1 / -				Clear	1.6	70	67
				Quadruple pane, 51 mm			
				Clear	1.3	61	61
				Real glass panes			
				Single pane, 6 mm			
				Clear	5.7	88	79
				Double pane, 26 mm			
				Clear	2.7	81	76
				Double climatic pane, 26 mm			
				Clear	1.1	80	64
				Infill			
				Multiple-moulded pane	1.9	57	62

Vitraplan attachments on request

Ug value Thermal insulation value
 tv value Light transmittance (transparency)
 g value Total energy transmittance

Construction and quality features

acc. to EN 13241

	SPU F42	SPU 67 Thermo	APU F42	APU F42 Thermo	APU 67 Thermo
Construction					
Self-supporting	●	●	●	●	●
Depth, mm	42	67	42	42	67
Door sizes					
Max. width mm, LZ	8000	10000	8000	7000	10000
Max. height mm, RM	7500	8000	7500	7500	8000
Material, door leaf					
Double-skinned steel section	●	-	●	●	-
Double-skinned steel section with thermal break	-	●	-	-	●
Aluminium profile	-	-	●	-	-
Aluminium profile, with thermal break	-	-	-	●	●
Surface, door leaf					
Galvanized steel with high-quality coating in RAL 9002	●	●	○	○	○
Galvanized steel with high-quality coating in RAL 9006	○	○	●	●	●
Galvanized steel with high-quality coating in RAL to choose	○	○	○	○	○
Anodised aluminium E6 / C0	-	-	●	●	●
Aluminium with high-quality coating in RAL to choose	-	-	○	○	○
Aluminium with high-quality coating in RAL 9005	-	-	-	-	-
Wicket door					
	○	○	○	○	○
Side doors					
Side door NT 60 matching the door	○	○	○	○	○
Side door NT 80 Thermo matching the door	○	○	○	○	○
Glazings					
Section window type A	○	○	-	-	-
Section window type D	○	○	-	-	-
Section window type E	○	-	-	-	-
Section window type F	○	○	-	-	-
Aluminium glazing frame	○	○	●	●	●
Seals					
All-round on 4 sides	●	●	●	●	●
Intermediate seal between the door sections	●	●	●	●	●
ThermoFrame					
	○	○	○	○	○
Locking systems					
Inside locking	●	●	●	●	●
Outside / inside locking	○	○	○	○	○
Security features					
Anti-lift kit	●	●	●	●	●
RC2 security features	○	○	-	-	-
Safety features according to EN 13241					
Finger trap protection	●	-	●	●	-
Side trap guard	●	●	●	●	●
Safety catch for doors	●	●	●	●	●
Fastening options					
Concrete	●	●	●	●	●
Steel	●	●	●	●	●
Brickwork	●	●	●	●	●
Others on request					

● = As standard

○ = Optional

ALR F42	ALR F42 Thermo	ALR 67 Thermo	ALR F42 Glazing	ALR 67 Thermo Glazing	ALR F42 Vitraplan	ALR F42 Vitraplan AT
● 42	● 42	● 67	● 42	● 67	● 42	● 42
8000 7500	7000 7500	10000 8000	5500 4000	5500 4000	6000 7000	6000 7000
-	-	-	-	-	-	-
●	-	-	●	-	●	●
-	●	●	-	●	-	-
-	-	-	-	-	-	-
●	●	●	●	●	-	-
○	○	○	○	○	-	-
-	-	-	-	-	●	●
○	○	○	-	-	-	-
○	○	○	○	○	○	○
○	○	○	○	○	-	-
-	-	-	-	-	-	-
-	-	-	-	-	-	-
-	-	-	-	-	-	-
●	●	●	●	●	●	●
●	●	●	●	●	●	●
○	○	○	○	○	○	○
●	●	●	●	●	●	●
○	○	○	-	-	-	-
●	●	●	●	●	●	●
-	-	-	-	-	-	-
●	●	-	●	-	●	●
●	●	●	●	●	●	●
●	●	●	●	●	●	●
●	●	●	●	●	●	●
●	●	●	●	●	●	●

Hörmann. For Life.

Thanks to their superior quality, Hörmann products ensure that residential and industrial buildings as well as construction projects function sustainably, reliably and economically. They are a crucial part of your building – and will remain so over the long term.

**INDUSTRIAL DOORS. LOADING TECHNOLOGY.
SLIDING DOORS. CONSTRUCTION PROJECT
DOORS. PERIMETER PROTECTION SYSTEMS.**



Some of the products shown feature special equipment and do not always correspond to the standard versions. The surface finishes and colours shown are subject to the limitations of the printing process and cannot be regarded as binding. All RAL colours are based on the RAL colour chart. All rights reserved. No part may be reproduced without our prior permission. Subject to changes.