

## **May Mezzo Installation Options**



**EMAIL: [ENQUIRIES@SAMSONAWNINGS.CO.UK](mailto:ENQUIRIES@SAMSONAWNINGS.CO.UK)**  
**TELEPHONE: (01933) 448844**  
**MON - FRI 8:30AM - 5:30PM**

Accessories and Bases

Canopy bonnet

A light bonnet in the centre of the canopy optically breaks the straight areas and lines. This gives the parasol a complete new face. The overlapping between canopy bonnet and canopy ensures that as few as possible water enters the openings in case of rain and wind. So there are hardly any limitations of the regular functions.



Protective sleeve, version zipper and aluminium rod

With integrated aluminium rod and zipper for easy operation. Made of tarp material, colour grey. For DACAPO please indicate parasol size and valance option. For MEZZO please indicate parasol size and type (MG or MH). Included in delivery of parasol.



For retrofitting MEZZO art. no. **MA130**  
For retrofitting DACAPO art. no. **DA130**

Substitute canopy covering

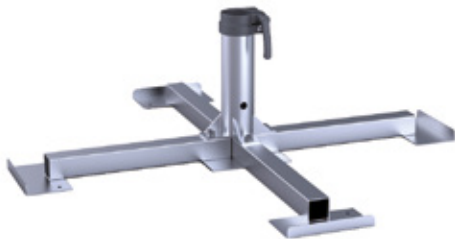
An occasional change of canopy covering can give your patio a completely new flair.



Cross pedestal

mounted with screws, frame size 83 x 83 cm, total height 28 cm, galvanized, weight approx. 4.5 kg. For standard concrete slabs 40 x 40 x 5 cm.

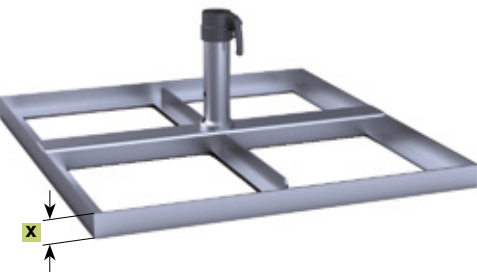
art. no. **DMZ110**



Full frame pedestal

frame size 84 x 91 cm, total height 33 cm, height of frame x = 5 cm, galvanized, weight approx. 23 kg. For 1 set of standard concrete slabs 40 x 40 x 5 cm.

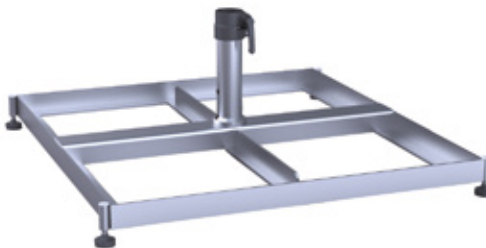
art. no. **DMZ411**



Full frame pedestal adjustable for slanting surfaces

with 4 rubber diagonal support levelling screws, frame size 84 x 91 cm, total height min. 34 cm, max. 40 cm, galvanized, weight approx. 24 kg. For 1 set of standard concrete slabs 40 x 40 x 5 cm.

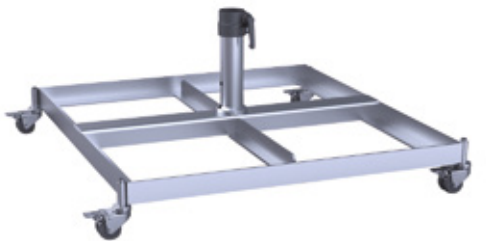
art. no. **DMZ412**



Full frame pedestal on wheels

with rubber heavy-duty rollers and fixing brakes, frame size 84 x 91 cm, total height 40 cm, diameter of rollers 5 cm, galvanized, weight approx. 24 kg. For 1 set of standard concrete slabs 40 x 40 x 5 cm. Attention: wind sensitive!

art. no. **DMZ414**



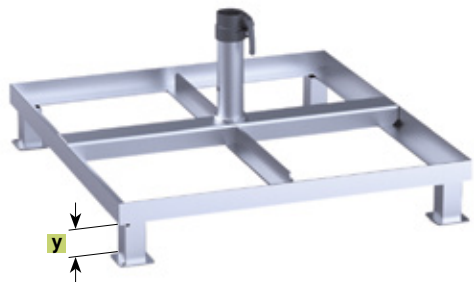
Heavy-duty wheels Ø 15 cm

wheel diameter 15 cm, for uneven surfaces. Rubber, with fixing brakes, loading capacity 110 kg/wheel. Suitable for DMZ414.

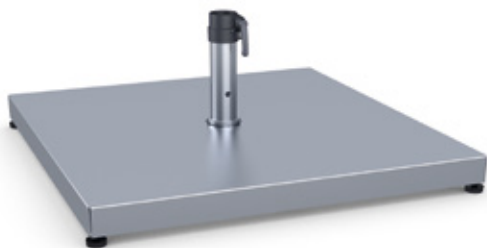
For orders with full frame pedestal  
For retrofitting

art. no. **351498**  
art. no. **351499**

**Full frame pedestal on feet**  
for forklift or lift truck transport, frame size  
84 x 91 cm, foot height y = 10 cm, weight approx. 25 kg, galvanized.  
For 1 set of standard concrete slabs 40 x 40 x 5 cm.  
art. no. **DMZ420**



**Frame pedestal cover plate**  
stainless steel 1.4310, fits on DMZ411, DMZ412, DMZ414 and  
DMZ420. For retrofitting.  
art. no. **200905**



DMZ411 mit 200905

**Concrete slabs**  
1 set = 4 slabs, each 40 x 40 x 5 cm, weight per slab: approx. 18 kg,  
Total weight approx. 72 kg.  
art. no. **XZ40**



**Granite base**  
Ø approx. 70 cm, 2 pieces, round, grau, polished, 4 recessed grips,  
stainless steel surface, weight approx. 100 kg, height x = approx.  
10 cm  
art. no. **DMZ141**



**Wheeled pedestal**  
incl. weights, rubber rollers,  
stainless steel locking rod. Colour anthracite,  
75 x 75 cm, weight approx. 100 kg.

anthracite  
art. no. **DMZ282**



**Wheeled pedestal**  
incl. weights, rubber rollers,  
stainless steel locking rod. Colour graphite,  
75 x 75 cm, weight approx. 100 kg.

graphite  
art. no. **DMZ283**



**Free-standing base plate**  
plate size 80 x 80 cm, steel plate thickness x = 12 mm, galvanized,  
weight approx. 60 kg. Only use in combination with art. 351185.

art. no. **DMZ271**



**Add-on weight plate**  
fits for DMZ271 and DMZ139, for retrofitting. Plate size 78 x 78 cm,  
steel plate thickness x = 12 mm, galvanized, weight approx. 56 kg.

art. no. **351185**



351185 with DMZ271

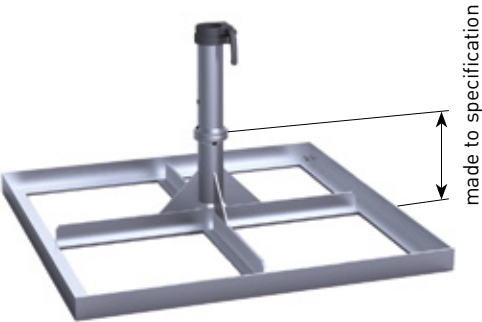
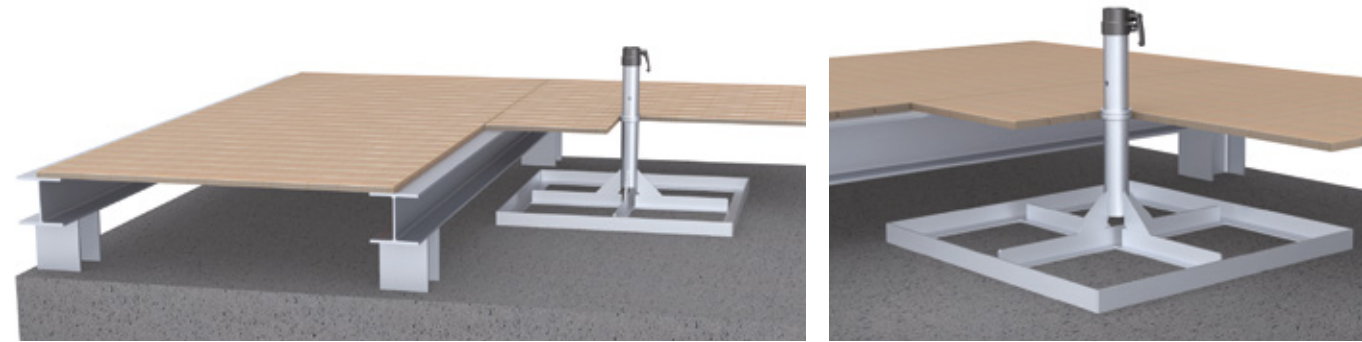
**Anti-slip mat**  
1 piece, 80 x 80cm, suitable for the steel plates of the installation  
options of DMZ271 and DMZ139. Increases the coefficient of fric-  
tion between steel plate and floor covering (wood, concrete slabs,  
asphalt) and therefore decreases slipping caused by wind. Colour  
black, x=3 mm.

art. no. **352791**



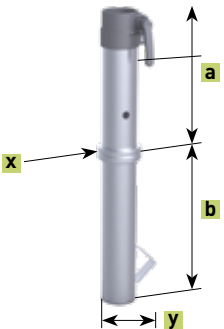
**Full frame pedestal**  
customized height to fit patio surface, frame size 83 x 83 cm, screw-off upper part, galvanized, weight approx. 23 kg, incl. top plate for winter protection. For 1 set of standard concrete slabs 40 x 40 x 5 cm.

art. no. **DMZ208**



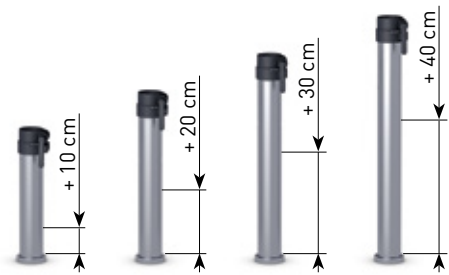
**Anchor tube to be embedded in concrete**  
2 pieces, screw-off upper part, galvanized, weight approx. 4.7 kg, incl. top plate for winter protection.  
a = 26 cm, b = 29 cm, x = Ø 8 cm, y = 15 cm

art. no. **DMZ118**

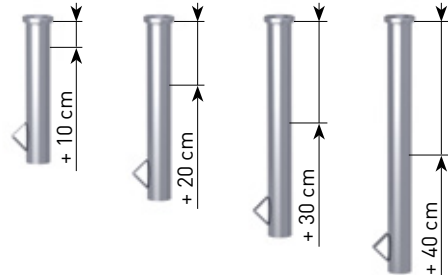


**DMZ118 options:  
galvanized**

**DMZ118 upper anchor tube, extra length**

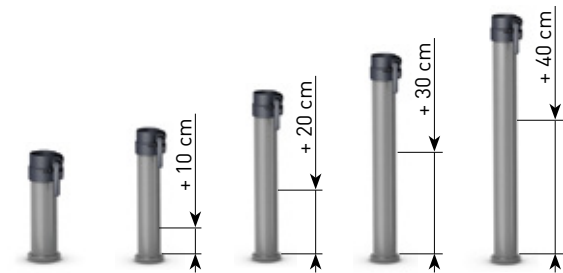


**DMZ118 lower anchor tube, extra length**



**DMZ118 options:  
galvanized and powder-coated  
in white aluminium RAL 9006**

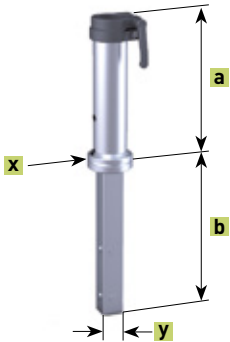
**DMZ118 upper anchor tube, standard and extra length**







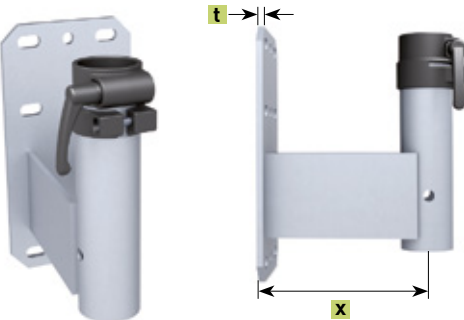
**Anchor tube to be embedded in concrete**  
identical with DMZ118, tube and upper part stainless steel V4A (1.4571), surface glass bead blasted.  
art. no. **352779**



**Anchor tube to be embedded in concrete**  
for an existing foundation with a bore hole of min. Ø 71 mm, 2 pieces, screw-off upper part. The bore hole is filled with concrete or epoxy resin in order to fix the lower part of the anchor tube. The existing foundation must be adequate in size for the designated parasol. Galvanized, weight approx. 3 kg, lower tube square, incl. top plate for winter protection.  
a = 25 cm, b = 28.5 cm, x = Ø 8 cm, y = □ 5 cm  
art. no. **DMZ146**



**Dowel-anchored plate**  
galvanized, weight approx. 5 kg,  
a = 27.5 cm, x = Ø 21.5 cm, t = 1.2 cm, z = Ø 1.8 cm  
art. no. **DMZ261**



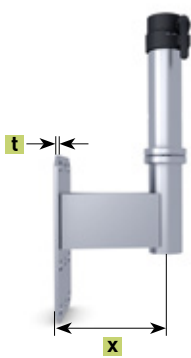
**Wall bracket**  
galvanized, weight approx. 5.5 kg, wall plate 30 x 16 cm, x = 20 cm, t = 0.8 cm. Bottom of support pole rests on bottom end of anchor tube. For MEZZO this option only makes sense in case of low balustrades and ledges, otherwise the parasol canopy will hit the wall.  
art. no. **DMZ125**

**Wall pressure plate for DMZ125**  
fits for DMZ125 and DMZ170, galvanized; 30 x 16 cm, to be clamped onto the existing bars (only possible if these are very strong), bore holes for M16 stud bolts (not included in the delivery)  
art. no. **200084**



together with  
200084

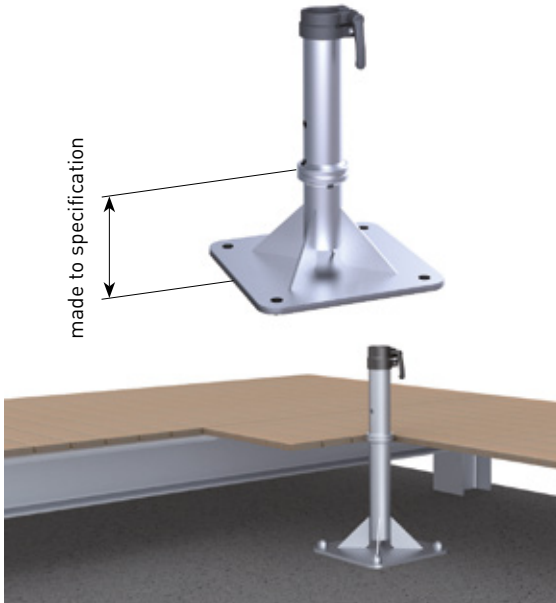
**Wall bracket**  
galvanized, weight approx. 6.5 kg, wall plate 30 x 16 cm, x = 20 cm, t = 0.8 cm.  
art. no. **DMZ170**



**Corner wall bracket**  
galvanized, weight approx. 5.5 kg, x = 5.5 cm, t = 0.8 cm.  
art. no. **DMZ172**



**Dowel-anchored plate**  
customized height to fit patio surface, anchor plate 30 x 30 cm, screw-off upper part, galvanized, weight approx. 10 kg, incl. top plate for winter protection.  
art. no. **DMZ129**

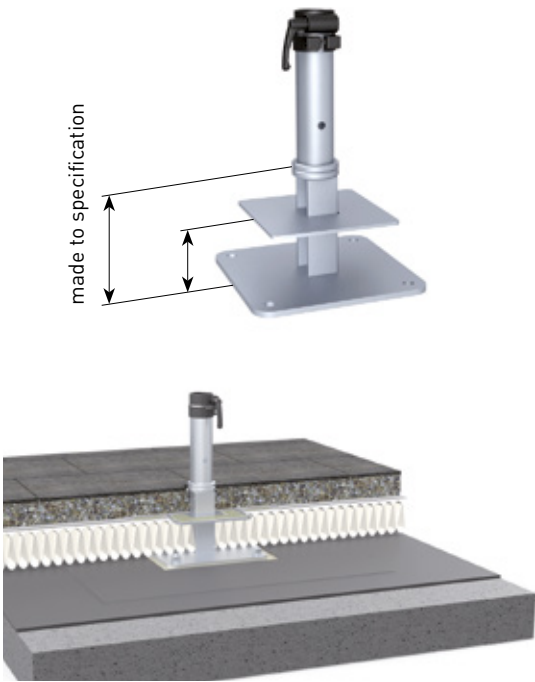
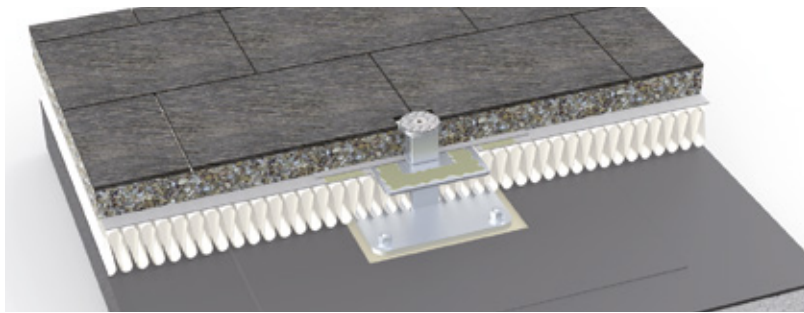


made to specification

**Flat-roof dowel-anchored plate**

externally insulated roof system, system-conform flat roof connection with liquid plastic, customized height to fit flat roof surface, dowel plate 30 x 30 cm, screw-off upper part, galvanized, weight approx. 13 kg, incl. top plate for winter protection.

art. no. **DMZ186**

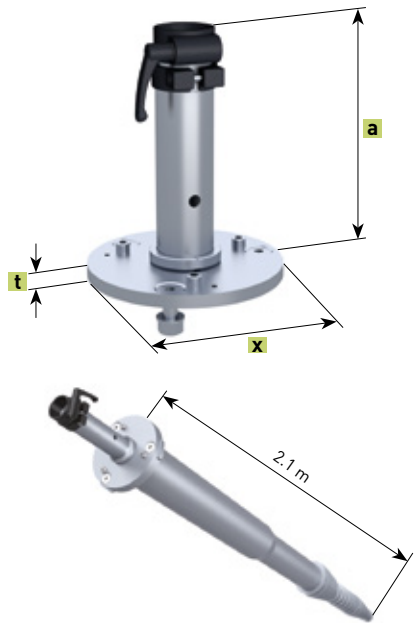


**Ground screw anchor fixture**

anchor tube, suitable with without Krinner ground screw KSF F 140 x 2100-M, incl. standard parts, parts unscrewed on delivery, galvanized, weight approx. 6 kg, x = 22 cm, t = 1,5 cm.

Delivery without Krinner ground screw KSF F 140 x 2100-M.  
Can be ordered by specialised retailers.

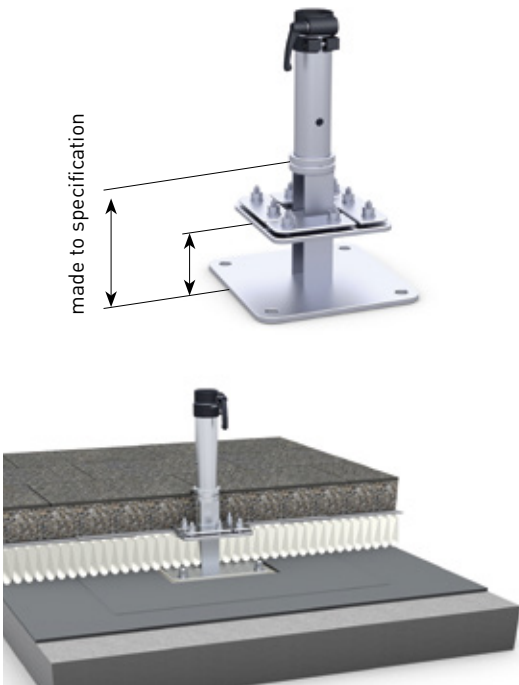
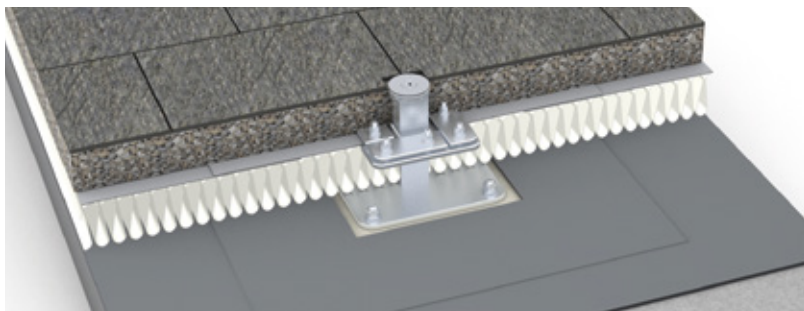
art. no. **DMZ329**



**Flat-roof dowel-anchored plate**

externally insulated roof system, loose-and-fixed flange assembly, bitumen waterproofing system and synthetic waterproofing material. Total height is determined by order to achieve the same level as the flat roof ground, dowelled plate 30 x 30 cm. Upper part removable, galvanized, weight approx. 18 kg, including top plate for winter protection.

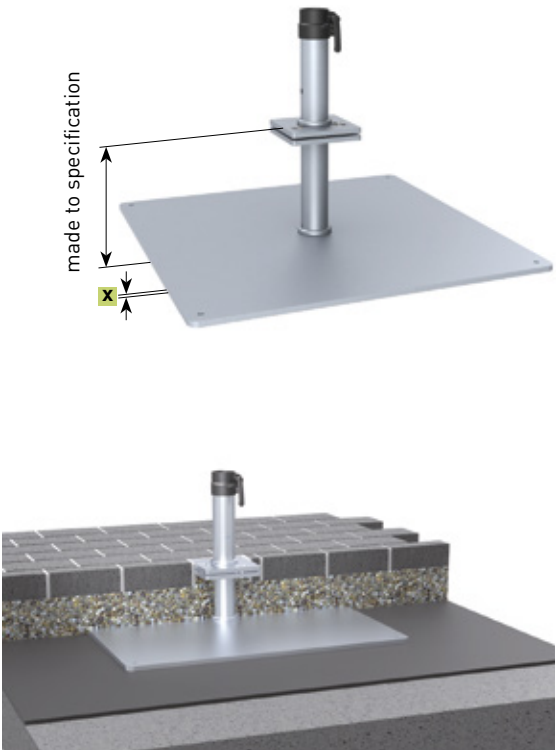
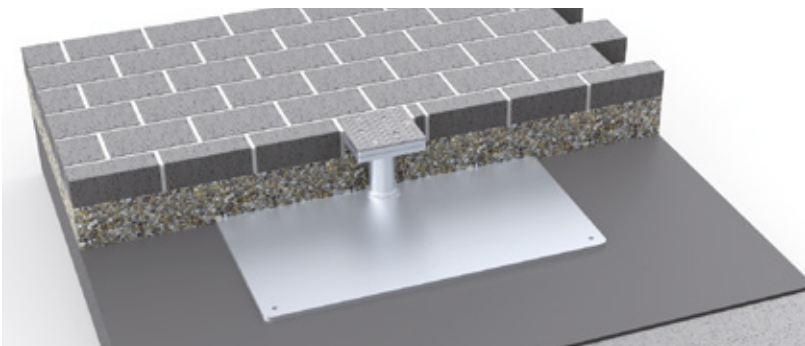
art. no. **DMZ194**



**Base plate**

customized height to fit patio surface, to be screwed together on site, heaviest component approx. 60 kg, base plate size 80 x 80 cm, plate thickness x = 12 mm, screw-off upper part, galvanized, weight approx. 68 kg, incl. top plate for winter protection. This weight is only sufficient if there are at least 70kg gravel or concrete slabs on top. Other than that an add-on weight plate (art. no. 351185) is required.

art. no. **DMZ139**



**Anchor bolt**

bolt and nut, fits for DMZ261, DMZ125, DMZ170, DMZ172, DMZ129, DMZ186 and DMZ194; approved for cracked and non-cracked concrete B25 to B55 (old compressive strength classes) C20/25 to C50/60 (new EU classification), also suitable for concrete B15 = C12/15 and natural stone with dense structure. Concrete bore hole Ø 16 x 115 mm. in stainless steel A4 1.4529. Package contains 4 bolts. European Technical Approval ETA-05/0069.

art. no. **200900**

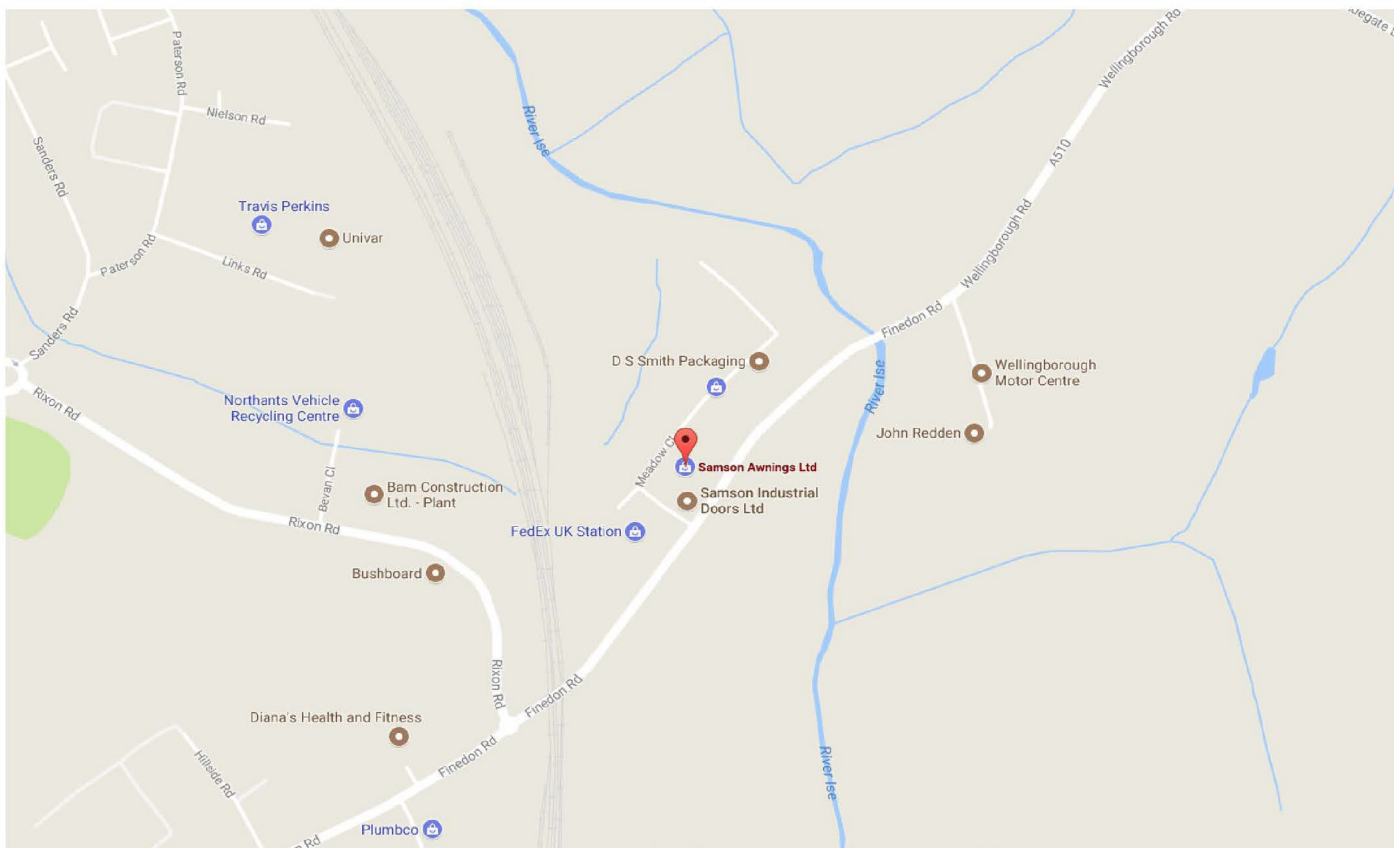


**Theft pin**

padlock and pin, in stainless steel, for support pole Ø 55 mm. suitable for retrofitting.

art. no. **200194**





## Nationwide delivery and installation service

**6-8 MEADOW CLOSE  
ISE VALLEY INDUSTRIAL ESTATE  
FINEDON ROAD  
WELLINGBOROUGH  
NN8 4BH**

**EMAIL: [ENQUIRIES@SAMSONAWNINGS.CO.UK](mailto:ENQUIRIES@SAMSONAWNINGS.CO.UK)  
TELEPHONE: (01933) 448844  
MON - FRI 8:30AM - 5:30PM**

