

**1**

**X**

Tools required

4.2 mm - For steel

6 mm - For concrete

Supplied

No 1

No 2

No 3

Plug

**2**

Hinges for a Saftidor that opens inwards - eg, for french doors

NB: Rivets to the inside

10 mm

4.2 mm steel

No 2

**X**

# Xpanda

**3**

Hinges for a Saftidor that opens outwards - eg, for front or back door

NB: Rivets to the inside

10 mm

4.2 mm steel

No 2

**X**

**4**

Close gate

Wheel assembly for Ref. 'C' Saftidors and wider

No 2

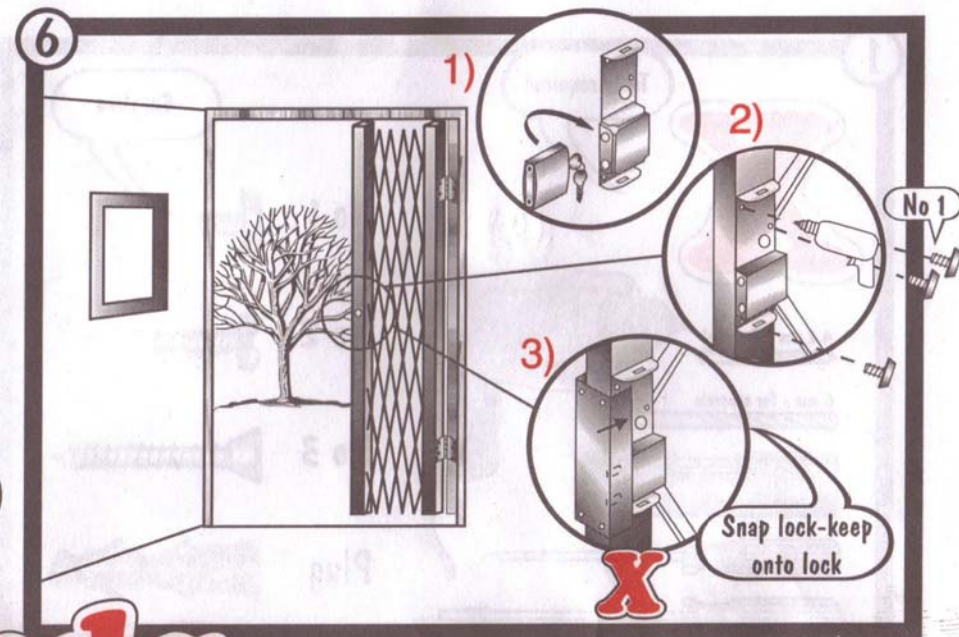
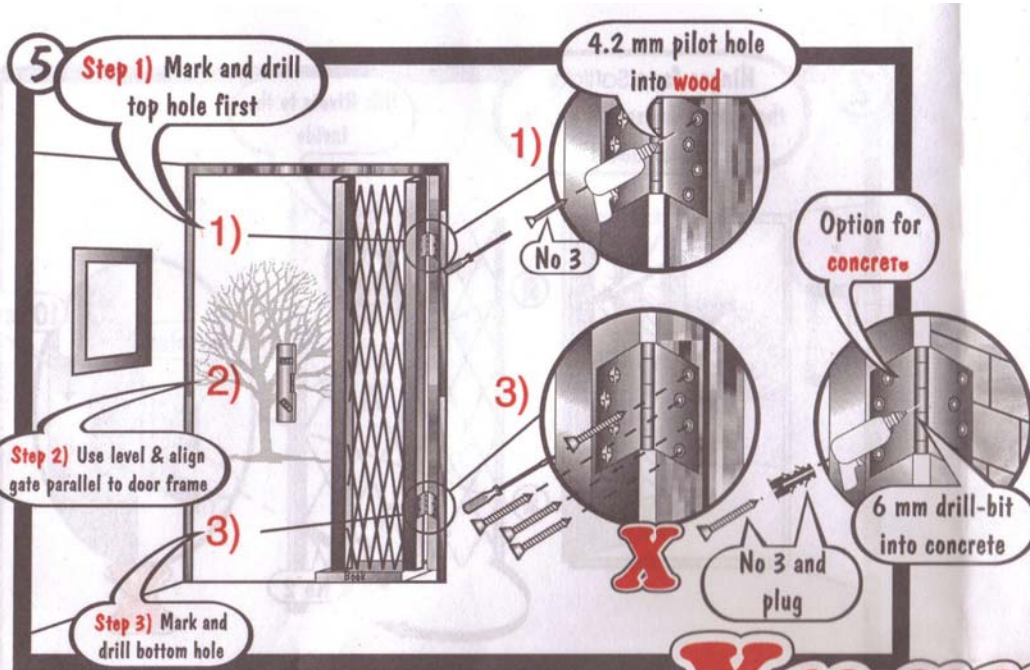
5mm high magazine

Ref. 'A' & 'B' Saftidors. Use book, or wood-block, 25-50 mm high on which to rest gate

Book

**X**





# Xnanda

