

BOLTS TO BE HI-TENSILE - ZINC PLATED - ALL M8, HEAD FORM AS DETAILED AND LENGTH TO SUIT STEEL / ALUMINIUM SECTION(S)

PACKERS TO BE 50x50 ALUMINIUM 'HORSESHOE' TYPE SILICONED INTO POSITION. MAX AVE 3mm per SIDE. (if required by building tolerances)

ALL ACCESSIBLE SOCKET HEADS TO BE FILLED WITH SILICON & ALL ACCESSIBLE THREADS BEYOND THE NYLOC NUTS TO BE SPOILED - AFTER FINAL TIGHTENING.

FOR THE VULCAN THE DEEP RAIL CAN BE SUBSTITUTED BY THE CHANNEL RAIL - PMD 012

REFER ALSO TO THE FOLLOWING DRAWINGS / DOCUMENTS: -

GA SR2 / 051 Rev 2 - Fixing Locations (Vulcan)
GA SR3 / 051 Rev 2 - Fixing Locations (Eclipse)

Summary of Substrates & Recommended Fixings -
PMD 900 Rev 3 (Vulcan SR2 & Eclipse SR3)

CHANGE HISTORY: Rev 0. New Issue & Number

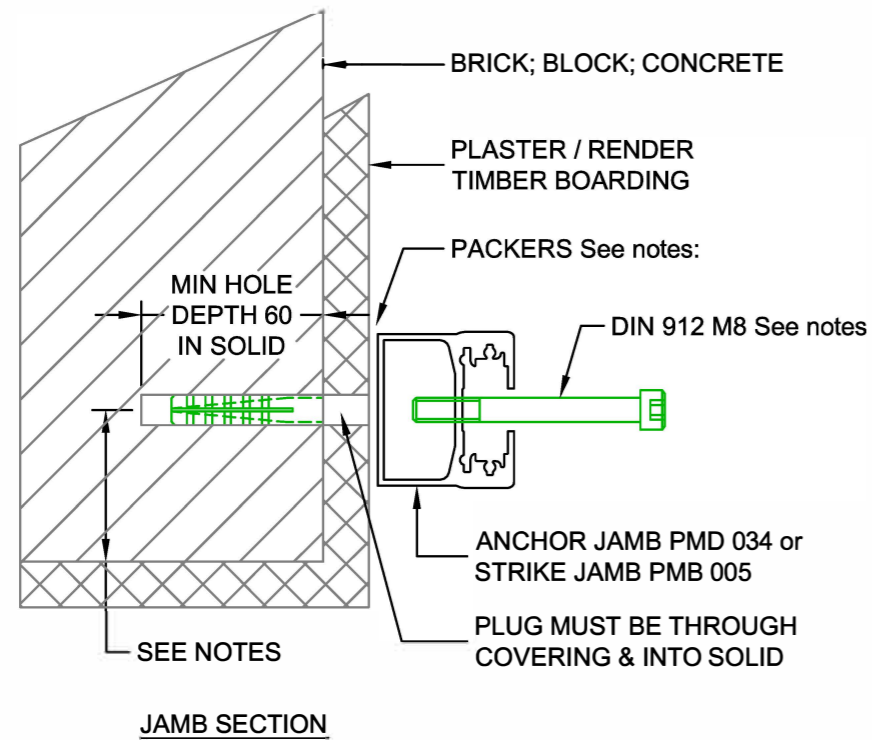
Rev 1.
Rev 2.
Rev 3.

Rev 4.
Rev 5.
Rev 6.
Rev 7.

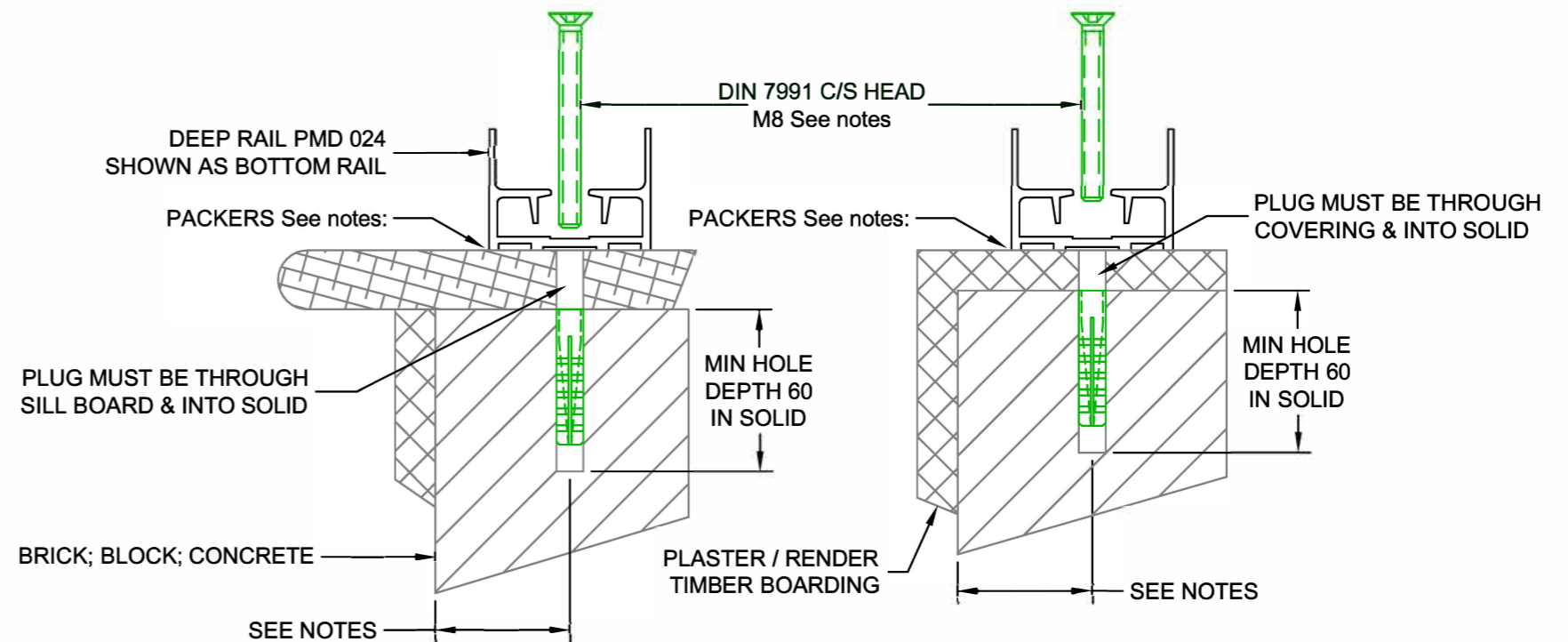
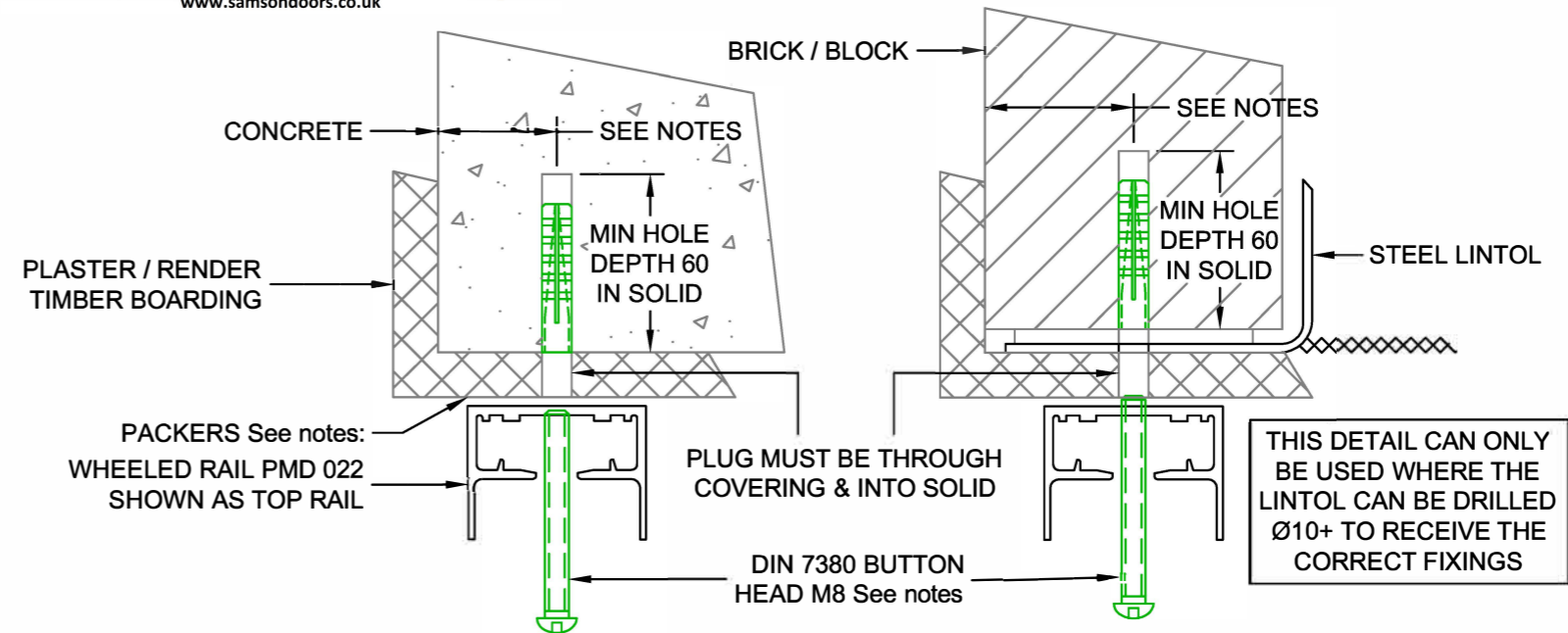
Checked by Initials:	Development.	Prototype.	Production.	X
Description: Vulcan & Eclipse - Installation Details Reveal Fixed to Steel / Aluminium Sections				

General Tolerances:
n/a

Date: Dec 11
Revision: 0
Scale: -



FOR FIXED GRIDS
Substitute DIN912 Socket Cap bolts for the
DIN7380 & DIN 7991 bolts



BOLTS TO BE HI-TENSILE - ZINC PLATED - ALL M8, HEAD FORM AS DETAILED AND LENGTH AS NOTES.

IF BACKGROUND PLASTER IS LOOSE or DEGRADED REPLACE WITH SOLID BOARD (PLYWOOD or Similar)
FISCHER PLUGS M8-S MUST BE IN SOLID BRICKWORK / BLOCKWORK / CONCRETE. LIGHTWEIGHT PLASTER & TIMBER BOARDING DO NOT COUNT AS SOLID BACKGROUND

BOLT LENGTH = 60 + PACKERS / SILL + PLASTER / RENDER DEPTH

PACKERS TO BE 50x50 ALUMINIUM 'HORSESHOE' TYPE SILICONED INTO POSITION. MAX AVE 3mm per SIDE. (if required by building tolerances)

ALL ACCESSIBLE SOCKET HEADS TO BE FILLED WITH SILICON AFTER FINAL TIGHTENING.

FIXING TO EDGE DISTANCE =
MINIMUM 50mm - BRICKWORK & STANDARD BLOCKWORK
MINIMUM 40mm - INSITU CONCRETE & DENSE CONCRETE BLOCKS

FOR THE VULCAN THE DEEP RAIL CAN BE SUBSTITUTED BY THE CHANNEL RAIL - PMD 012

RETRACTABLE GRIDS Shown - FOR FIXED GRIDS
Substitute DIN912 Socket Cap bolts for the DIN7380 & DIN 7991 bolts

REFER ALSO TO THE FOLLOWING DRAWINGS / DOCUMENTS: -

GA SR2 / 051 Rev 2 - Fixing Locations (Vulcan)
GA SR3 / 051 Rev 2 - Fixing Locations (Eclipse)

Summary of Substrates & Recommended Fixings -
PMD 900 Rev 3 (Vulcan SR2 & Eclipse SR3)

CHANGE HISTORY: Rev 0. New Issue & Number
Rev 1. Re drafted with revised fixings
Rev 2.
Rev 3.

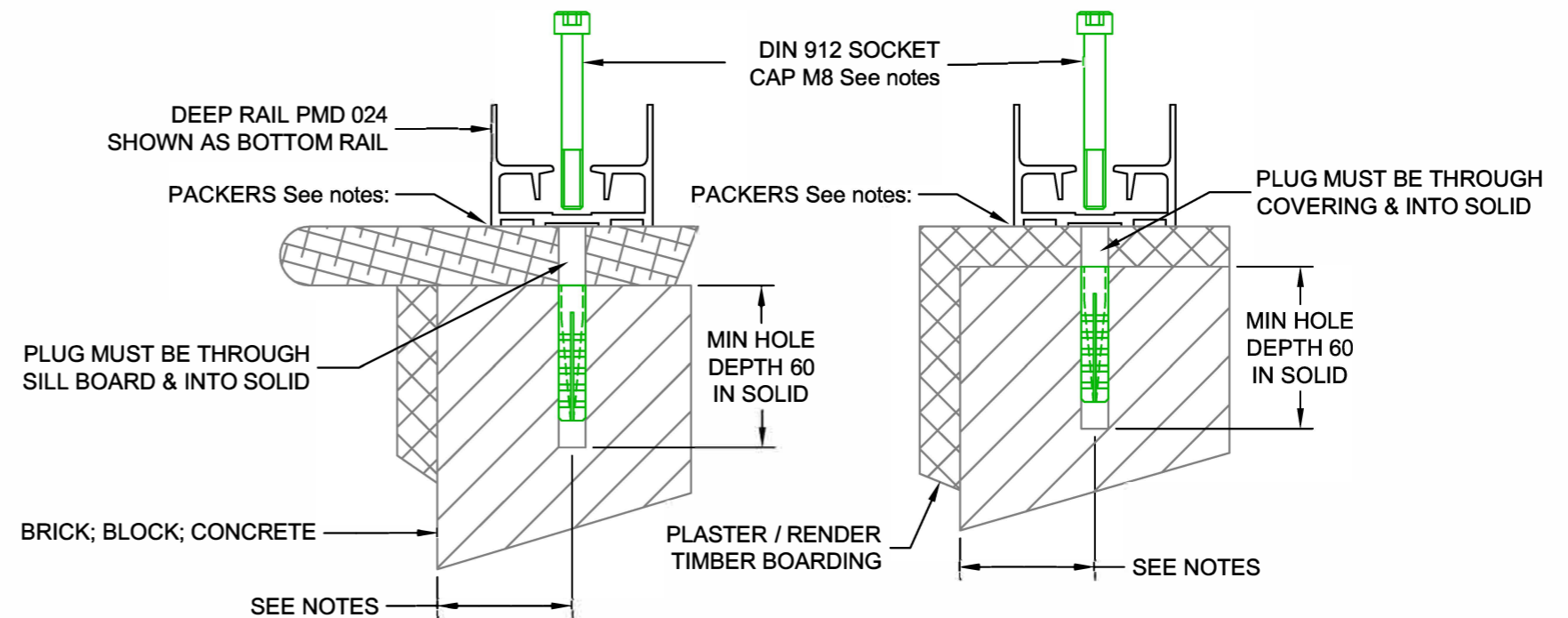
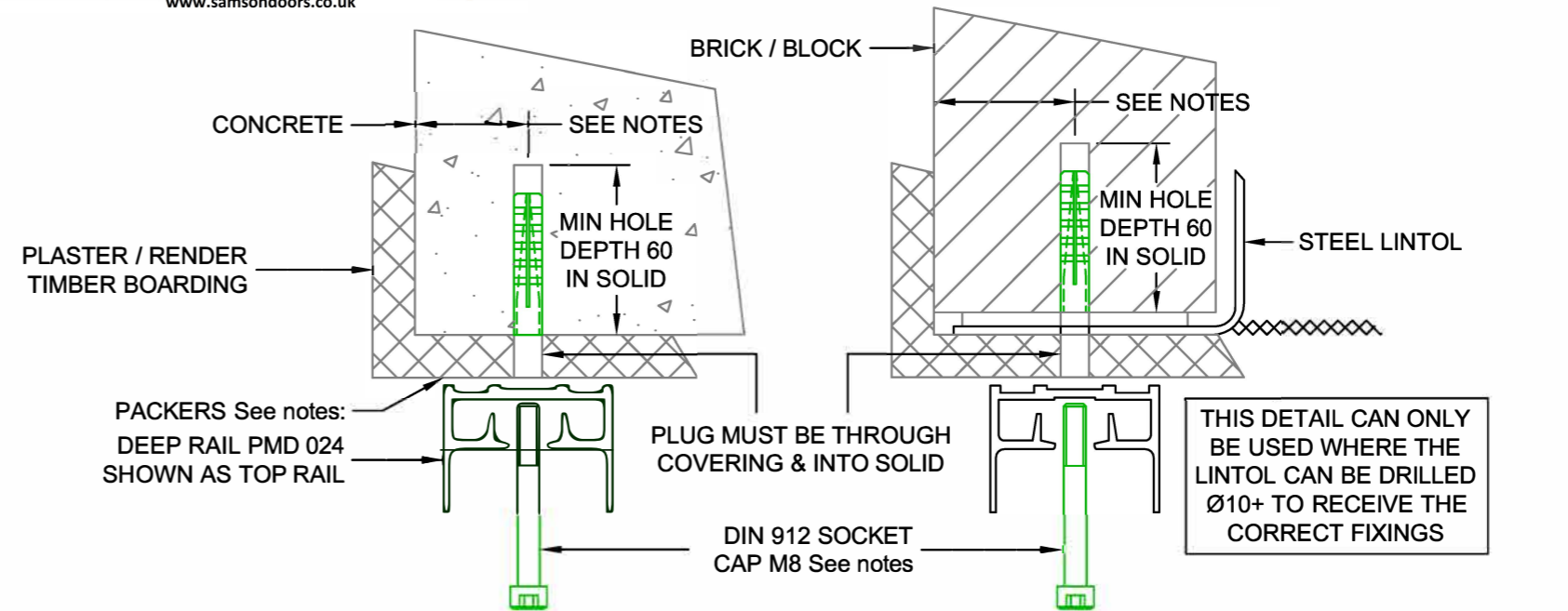
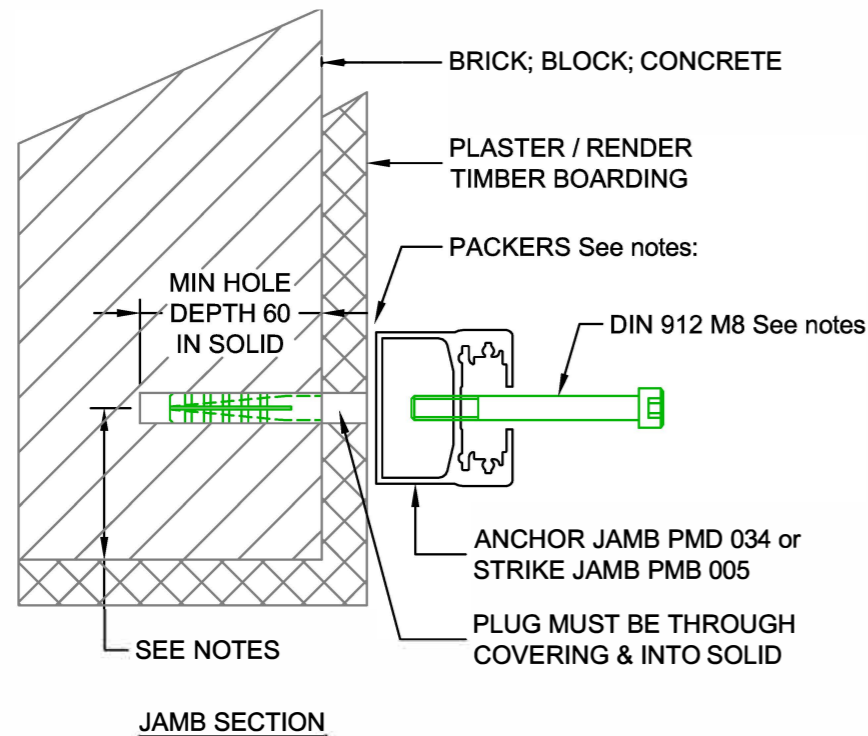
Checked by Initials: Development. Prototype. Production. X

Description:
Vulcan & Eclipse - Installation Details Reveal
Fixed Jamb & Rails to Solid Walls

Rev 4.
Rev 5.
Rev 6.
Rev 7.

General Tolerances:
n/a

Date: Dec 11
Revision: 1
Scale: -



BOLTS TO BE HI-TENSILE - ZINC PLATED - ALL M8, HEAD FORM AS
DETAILED AND LENGTH AS NOTES.

IF BACKGROUND PLASTER IS LOOSE or DEGRADED REPLACE WITH
SOLID BOARD (PLYWOOD or Similar)
FISCHER PLUGS M8-S MUST BE IN SOLID BRICKWORK /
BLOCKWORK / CONCRETE. LIGHTWEIGHT PLASTER & TIMBER
BOARDING DO NOT COUNT AS SOLID BACKGROUND

BOLT LENGTH = 60 + PACKERS / SILL + PLASTER / RENDER DEPTH

PACKERS TO BE 50x50 ALUMINIUM 'HORSESHOE' TYPE SILICONED
INTO POSITION. MAX AVE 3mm per SIDE. (if required by building
tolerances)

ALL ACCESSIBLE SOCKET HEADS TO BE FILLED WITH SILICON
AFTER FINAL TIGHTENING.

FIXING TO EDGE DISTANCE =
MINIMUM 50mm - BRICKWORK & STANDARD BLOCKWORK
MINIMUM 40mm - INSITU CONCRETE & DENSE CONCRETE BLOCKS

FOR THE VULCAN THE DEEP
RAIL CAN BE SUBSTITUTED BY
THE CHANNEL RAIL - PMD 012

**EXTRACT OF APPROVED FIXING DETAILS FOR
FIXED GRID SPECIFIC REVEAL FIXINGS TO SOLID**

REFER ALSO TO THE FOLLOWING
DRAWINGS / DOCUMENTS: -

GA SR2 / 051 Rev 2 - Fixing Locations (Vulcan)
GA SR3 / 051 Rev 2 - Fixing Locations (Eclipse)

Summary of Substrates & Recommended Fixings -
PMD 900 Rev 3 (Vulcan SR2 & Eclipse SR3)

CHANGE HISTORY: Rev 0. New Issue & Number
Rev 1. Re drafted with revised fixings
Rev 2.
Rev 3.

Checked by Initials: Development. Prototype. Production. X

Description:

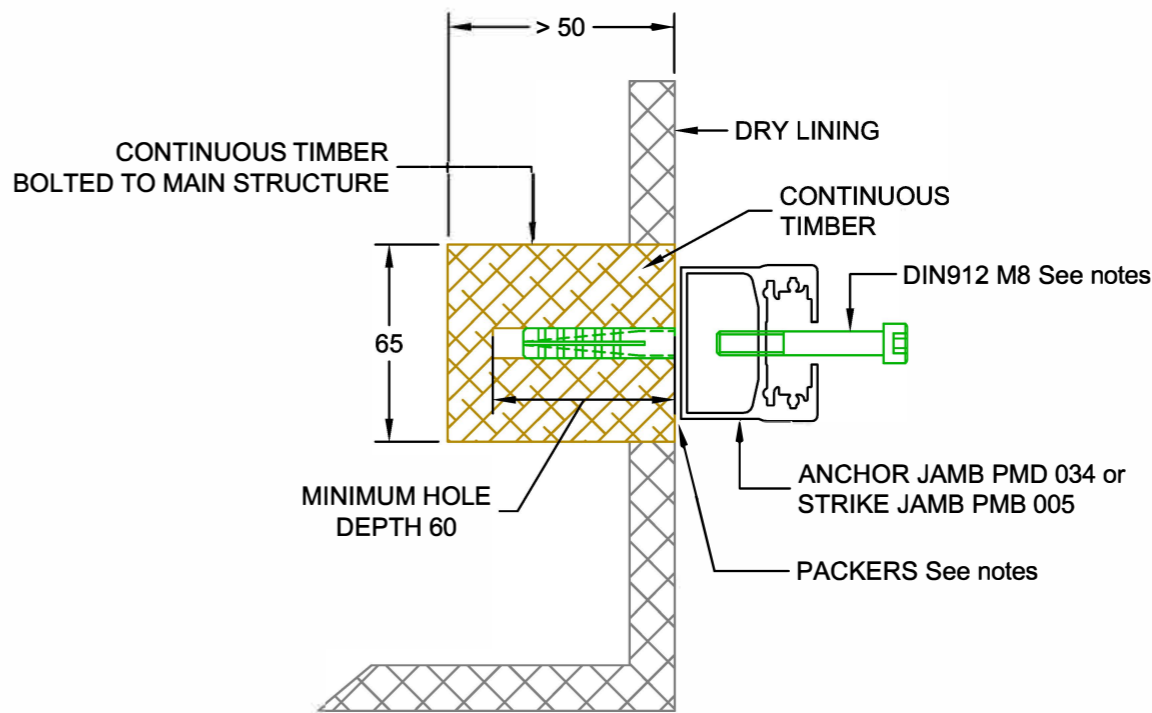
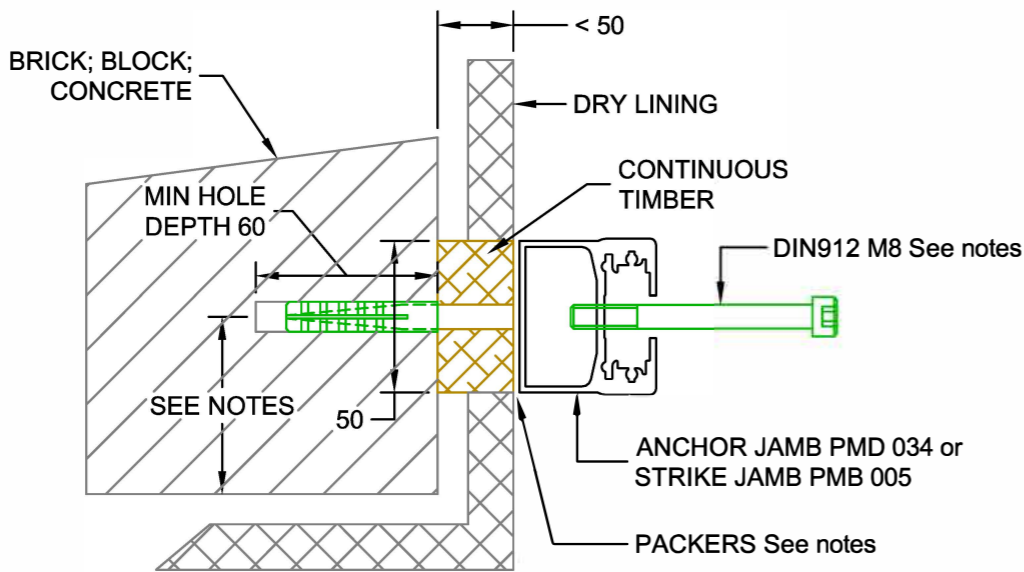
**Vulcan & Eclipse - Fixed Grid Only Reveal
Fixed Jamb & Rails to Solid Walls**

Rev 4.
Rev 5.
Rev 6.
Rev 7.

General Tolerances:
n/a

Date:
Dec 11

Revision:
1 Scale:
-



BOLTS TO BE HI-TENSILE - ZINC PLATED - ALL M8, HEAD FORM AS DETAILED AND LENGTH AS NOTES.

TIMBER TO BE CONTINUOUS STRUCTURAL GRADE SOFTWOOD.

- IF DRY LINING < 50 DEEP TIMBER TO BE MINIMUM 50 WIDE & FIXED THROUGH INTO MAIN STRUCTURE.
BOLT LENGTH = 55 + TIMBER BLOCKING & PACKERS
- IF DRY LINING > 50 THICK or STRUCTURAL TIMBER FRAME
TIMBER TO BE MINIMUM 65 WIDE & FIXED TO BUILDING
STRUCTURE BY AT LEAST M8 GAUGE FIXINGS. UNIT FIXINGS
ARE DIRECT TO TIMBER. BOLT LENGTH = 55 + PACKERS

PACKERS TO BE 50x50 ALUMINIUM 'HORSESHOE' TYPE SILICONED INTO POSITION. MAX AVE 3mm per SIDE. (if required by building tolerances)

ALL ACCESSIBLE SOCKET HEADS TO BE FILLED WITH SILICON AFTER FINAL TIGHTENING.

FIXING TO EDGE DISTANCE =
MINIMUM 50mm - BRICKWORK & STANDARD BLOCKWORK
MINIMUM 40mm - INSITU CONCRETE & DENSE CONCRETE BLOCKS

REFER ALSO TO THE FOLLOWING
DRAWINGS / DOCUMENTS: -

GA SR2 / 051 Rev 2 - Fixing Locations (Vulcan)
GA SR3 / 051 Rev 2 - Fixing Locations (Eclipse)

Summary of Substrates & Recommended Fixings -
PMD 900 Rev 3 (Vulcan SR2 & Eclipse SR3)

CHANGE HISTORY: Rev 0. New Issue & Number
Rev 1. Re drafted with revised fixings
Rev 2.
Rev 3.

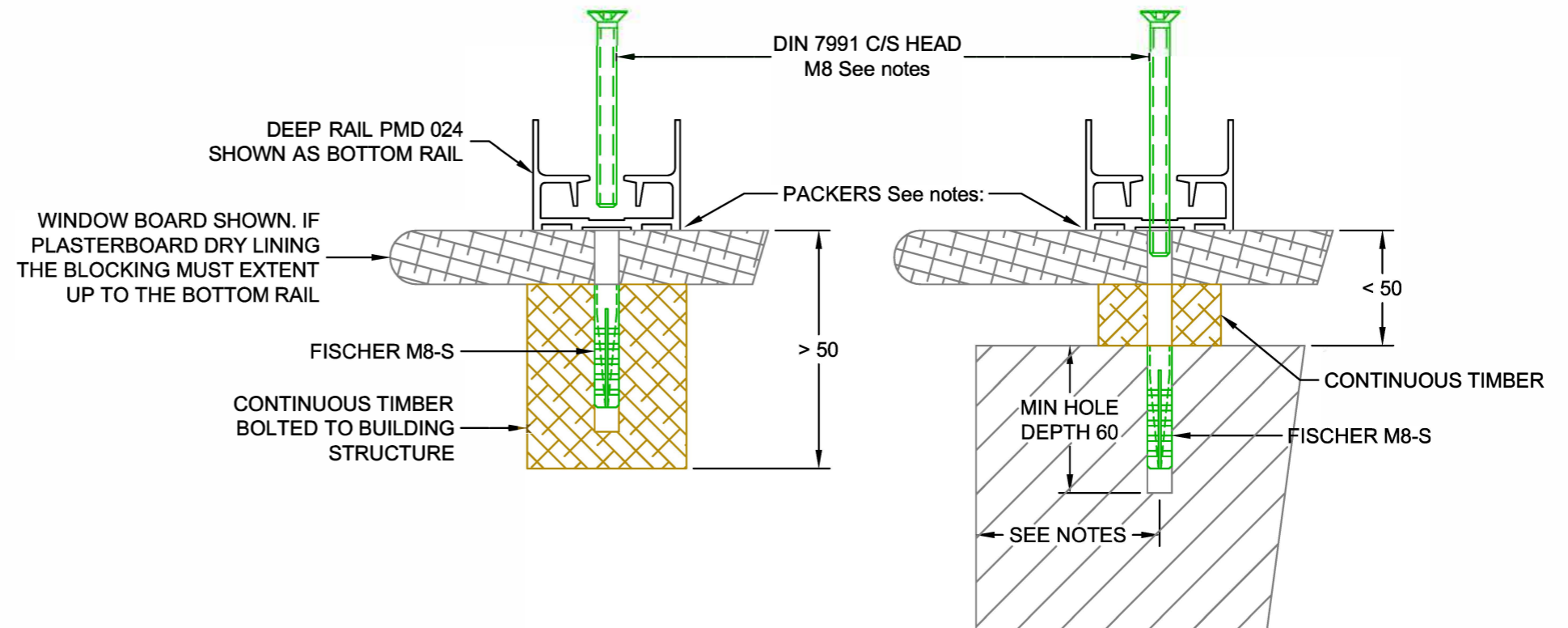
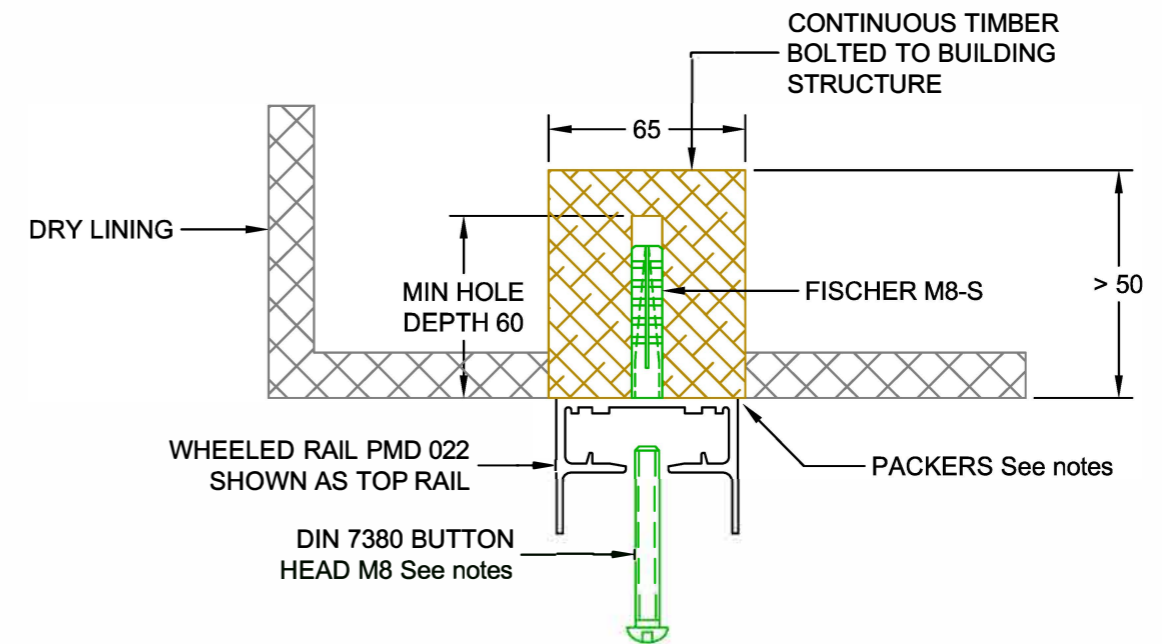
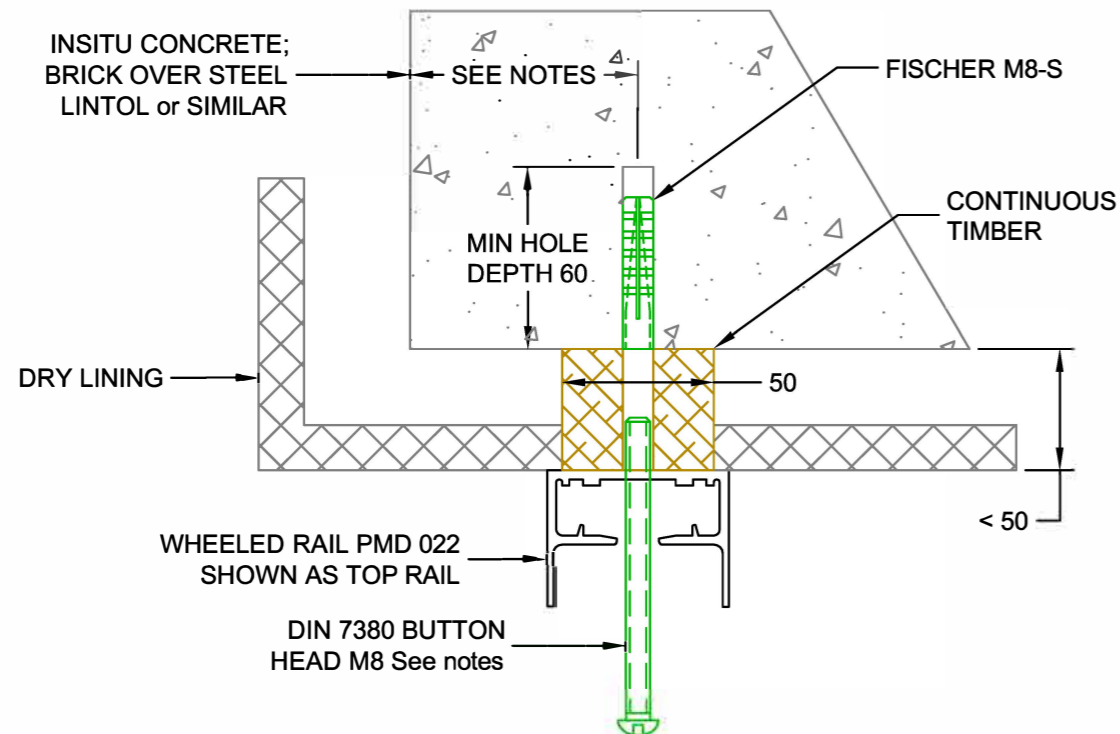
Checked by Initials:		Development.	Prototype.	Production.	X
----------------------	--	--------------	------------	-------------	---

Description:
**Vulcan & Eclipse - Installation Details Reveal
Fixed Jamb to Dry Lined Walls**

Rev 4.
Rev 5.
Rev 6.
Rev 7.

General Tolerances:	n/a
---------------------	-----

Date:	Dec 11
Revision:	1
Scale:	-



BOLTS TO BE HI-TENSILE - ZINC PLATED - ALL M8, HEAD FORM AS
DETAILED AND LENGTH AS NOTES.

TIMBER TO BE CONTINUOUS STRUCTURAL GRADE SOFTWOOD.

1. IF DRY LINING < 50 DEEP TIMBER TO BE MINIMUM 50 WIDE &
FIXED THROUGH INTO MAIN STRUCTURE.
BOLT LENGTH = 55 + TIMBER BLOCKING & PACKERS
2. IF DRY LINING > 50 THICK or STRUCTURAL TIMBER FRAME
TIMBER TO BE MINIMUM 65 WIDE & FIXED TO BUILDING
STRUCTURE BY AT LEAST M8 GAUGE FIXINGS. UNIT FIXINGS
ARE DIRECT TO TIMBER. BOLT LENGTH = 55 + PACKERS

PACKERS TO BE 50x50 ALUMINIUM 'HORSESHOE' TYPE SILICONED
INTO POSITION. MAX AVE 3mm per SIDE. (if required by building
tolerances)

ALL ACCESSIBLE SOCKET HEADS TO BE FILLED WITH SILICON
AFTER FINAL TIGHTENING.

FIXING TO EDGE DISTANCE =
MINIMUM 50mm - BRICKWORK & STANDARD BLOCKWORK
MINIMUM 40mm - INSITU CONCRETE & DENSE CONCRETE BLOCKS

FOR THE VULCAN THE DEEP
RAIL CAN BE SUBSTITUTED BY
THE CHANNEL RAIL - PMD 012

RETRACTABLE GRIDS Shown - FOR FIXED GRIDS
Substitute DIN912 Socket Cap bolts for the DIN7380 & DIN 7991 bolts

REFER ALSO TO THE FOLLOWING
DRAWINGS / DOCUMENTS:-

GA SR2 / 051 Rev 2 - Fixing Locations (Vulcan)
GA SR3 / 051 Rev 2 - Fixing Locations (Eclipse)

Summary of Substrates & Recommended Fixings -
PMD 900 Rev 3 (Vulcan SR2 & Eclipse SR3)

CHANGE HISTORY: Rev 0. New Issue & Number
Rev 1. Re drafted with revised fixings
Rev 2.
Rev 3.

Checked by Initials: Development. Prototype. Production. X

Description:
Vulcan & Eclipse - Installation Details Reveal
Fixed Rails to Dry Lined Walls

Rev 4.
Rev 5.
Rev 6.
Rev 7.

General Tolerances:
n/a

Revision: 1
Date: Dec 11
Scale: