

# SECEUROGUARD™ 1000

## SeceuroGuard 1000 Retractable Security Gate

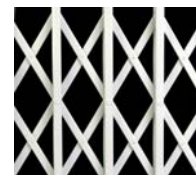
**Common Use** : Internal medium to high security domestic and selected commercial and retail applications. Made to measure in powder coated pre-galvanised steel.

### CONSTRUCTION

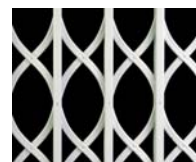
**Lattice** : High grade steel in 'X' lattice as standard and 'S' lattice as an option.  
**Weight** : 19kgm<sup>2</sup> nominal.  
**Stock colours** : 40 colours available as standard stock finishes.

### SIZES

**Maximum Height** : 3500mm.  
**Minimum Height** : 500mm.  
**Maximum Width** : Unlimited (See below).  
**Minimum Width** : No minimum.



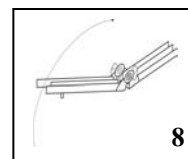
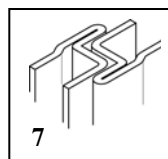
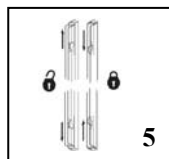
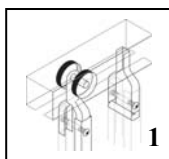
X - Lattice



S - Lattice

### GENERAL ARRANGEMENT

1. Top hung on nylon coated steel bearings.
2. All galvanised steel construction.
3. Powder coating in a range of colours.
4. Fits within or around the reveal.
5. Multi-point locking from a single key – 2 point.
6. Strong steel lattice with smooth durable finish.
7. Overlapped locking profiles.
8. Optional folding bottom track.
9. Steel riveted lattice assembly system.



**Please note: SeceuroGuard 1000** can accommodate an unlimited width with multiple sashes. Sashes are made in single pieces up to 2m wide. Larger sizes are made in sections for assembly on site, ensuring the weight of each section can be handled safely. Gates which are wider than 4m will be supplied with the top track in two pieces, the split will be in the middle. Where two split sashes meet two pickets are joined together using bolts and fixing plates supplied loose.

\*SeceuroGuard is also available in an insurance approved version, SeceuroGuard 1001.