



Fire rated
industrial
closing
systems

SLITE I / SLITE 2

Fire rated sliding door REI 120
According to uni 9723



Single or double- acting fire rated sliding door. In case of double-acting solution, the 2 leaves slide in opposite direction. Each leaf consists of insulated panels connected with a rigid metallic mullion and perimetral metallic frame (30/10 section tubular). Each leaf consists of 82mm thickness panel, having face sheet of light- gauge steel (galvanized steel SENDZIMIR) bonded to a steel channel frame reinforced with a rigid plastic-foam core. Sheets are obtained from an initial continuous lamination process, following a phosphate process and a final Primer paint (5 Micron thickness) on both sides of sheets. The finishing consists of 20 Micron thick paint applied on the external side of the sheet. The pre-painting finishing provides 400 hours of resistance in the saline fog atmosphere room without any alteration. So that the surface is totally smooth. In order to avoid any possible scratch, an adhesive film is applied on and to be removed once the door is assembled.

The thermal insulation is assured by a sandwich panel consisting of two gypsum boards and a rock wool core in-between. Sandwich panels are related thanks to "U" section profile with rock wall insulation and an external screw fastened reinforced profile. The fire rated perimetral frame of each leaf consists of galvanized steel profiles painted in black color. The perimetral gasket (smoke proof sealing) is installed onto the fire rated perimetral frame between the door and the wall.

The upper guide (covered by a galvanized steel carter painted with the same color of the door) consists of galvanized steel rail (monorail) equipped with trolleys and bearings. The angle clips are specially made to support the upper guide and designed with holes to grant a strong anchor (expansion bolt). The support legs

of the guide are fastened onto the wall (lintel) by dowels. The lower wheels (fixed onto a galvanized steel plaque) are installed beyond the wall and they slide inside the bottom rail of the leaf. This door is manually operated. Two (internal and external) black painted aluminum handles are provided. The door closes thanks to the counterweight positioned in the receiving door frame with double driving and idle sheaves. In case of double-acting door the counterweight is installed in the rear part of door and the central top consists of painted steel profiles shaped to form a tongue-and-groove jointing. In case of fire, the thermal fuse of the ampoule breaks due to high temperature and the door closes (speed controller and limit switch provided). The identification label is applied directly on the door with the reported manufacturer's name, the class of fire resistance, certificate number, name of the certification, approval, registration number and year of production. The door is certified under Italian laws and UNI 9723.

Fire rated doors are usually installed in smoke proof enclosure. Due to their particular characteristics and dimensions, fire doors installation should be designed and installed very carefully. It is important a detailed survey of site conditions, like floor level and vertical wall (perfectly straight up). Possible obstacles must be verified. Considering door weight, the capacity of the main structure must be verified. The door must be protected from the weather conditions and the sun because the painting can fade.



w e o p e n y o u r f u t u r e



SLITE I / SLITE 2

www.samsondoors.co.uk

0800 328 6250

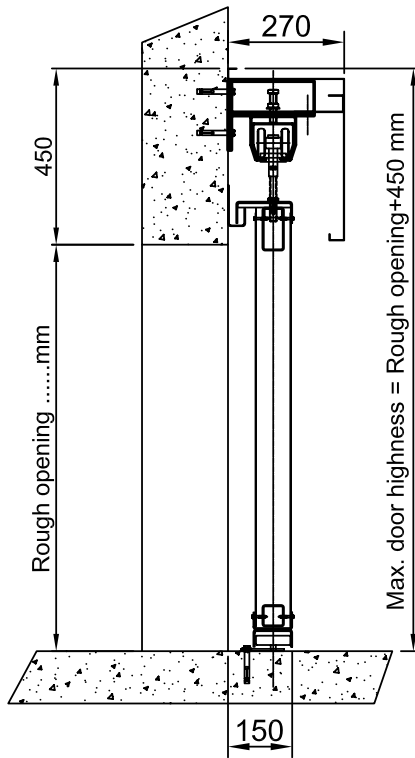
www.samsondoors.co.uk

Fire rated sliding door REI 120 according to uni 9723

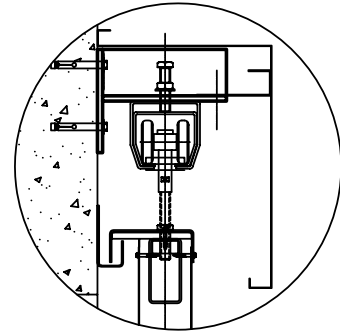
Fire rated industrial closing systems

CROSS SECTION

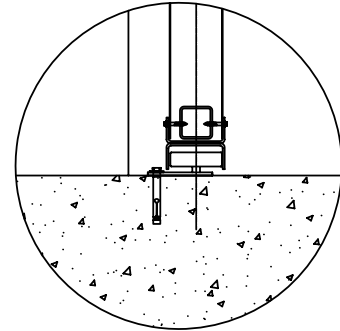
Door weight $\pm 65\text{Kg/sqm}$



Detail of the upper rail

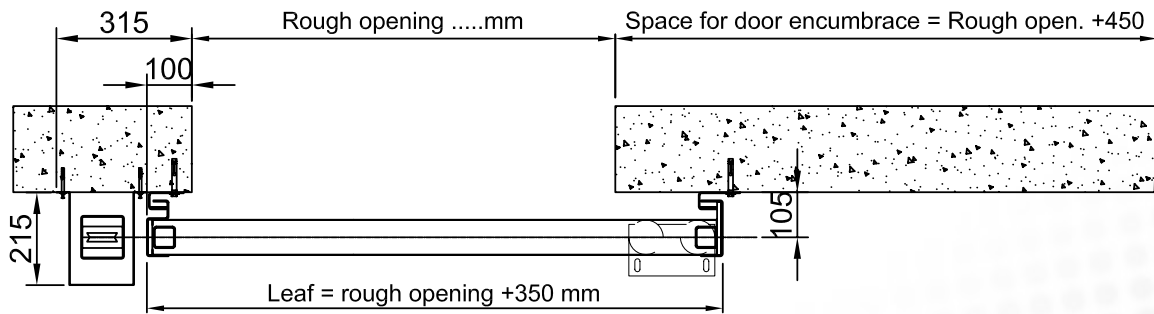


Detail of the lower rail

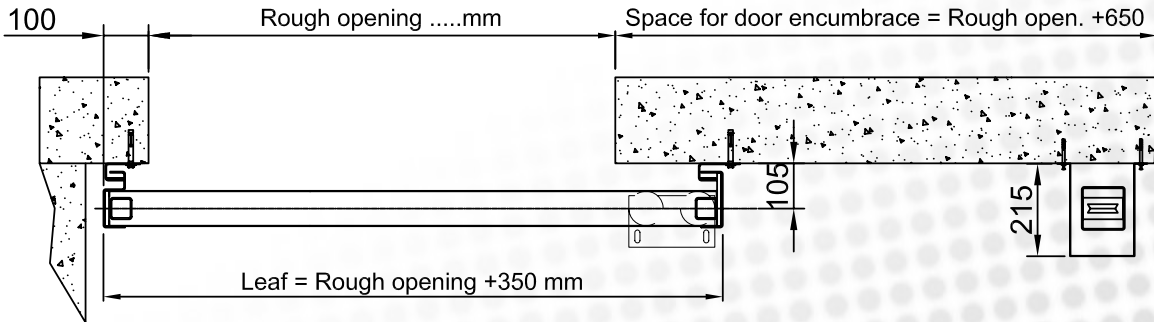


PLAN SECTIONS

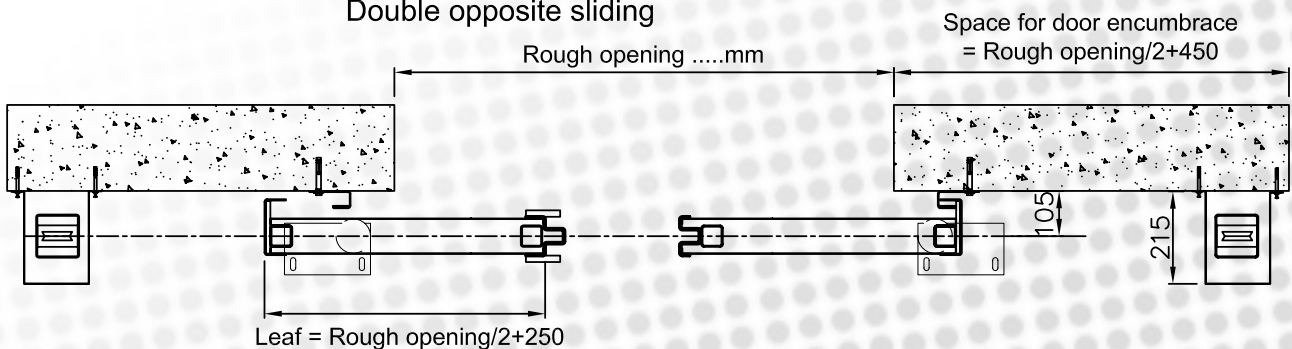
Standard sliding with counterweight



Sliding with retarded counterweight



Double opposite sliding





A C C E S S O R I E S F O R S L I D I N G F I R E D O O R S :

- Pedestrian door with doorstep
- Electromagnet with/without smoke and heat detector and key-off
- Retarded counterweight
- Offset-counterweight
- Plates in case of walls not suitable to expansion bolts
- Bolted plates for walls not suitable to expansion bolts
- Stainless-steel frame and covering
- Available colors for light gauge sheets:
Traffic white similar to RAL 9016, Pure white similar to RAL 9010, anthracite gray similar to RAL 7016, silver gray similar RAL 7001, gray aluminum similar to RAL 9007, bright gray similar to RAL 9006, white gray similar to RAL 9002, brown similar to RAL 8028, brown similar to RAL 8019, leaf green similar to RAL 6002 leaf green, moss green similar to RAL 6005, gentian blue sim. to RAL 5010, light blue sim. to RAL 5009, flame red sim. to RAL 3000, ruby red sim. to RAL 3003, rape yellow sim. to RAL 1021
- Possibility of painting in RAL

